

CODE **7**

PAPER-1

P1-15-7

235887

Time : 3 Hours

Maximum Marks : 264

READ THE INSTRUCTIONS CAREFULLY

GENERAL :

1. This sealed booklet is your Question Paper. Do not break the seal till you are instructed to do so.
2. The question paper CODE is printed on the left hand top corner of this sheet and the right hand top corner of the back cover of this booklet.
3. Use the Optical Response Sheet (ORS) provided separately for answering the questions.
4. The ORS CODE is printed on its left part as well as the right part. Ensure that both these codes are identical and same as that on the question paper booklet. If not, contact the invigilator.
5. Blank spaces are provided within this booklet for rough work.
6. Write your name and roll number in the space provided on the back cover of this booklet.
7. After breaking the seal of the booklet, verify that the booklet contains 32 pages and that all the 60 questions along with the options are legible.

QUESTION PAPER FORMAT AND MARKING SCHEME :

8. The question paper has three parts: Physics, Chemistry and Mathematics. Each part has three sections.
9. Carefully read the instructions given at the beginning of each section.
10. Section 1 contains 8 questions. The answer to each question is a single digit integer ranging from 0 to 9 (both inclusive).
Marking scheme: +4 for correct answer and 0 in all other cases.
11. Section 2 contains 10 multiple choice questions with one or more than one correct option.
Marking scheme: +4 for correct answer, 0 if not attempted and -2 in all other cases.
12. Section 3 contains 2 "match the following" type questions and you will have to match entries in Column I with the entries in Column II.
Marking scheme: for each entry in Column I, +2 for correct answer, 0 if not attempted and -1 in all other cases.

OPTICAL RESPONSE SHEET :

13. The ORS consists of an original (top sheet) and its carbon-less copy (bottom sheet).
14. Darken the appropriate bubbles on the original by applying sufficient pressure. This will leave an impression at the corresponding place on the carbon-less copy.
15. The original is machine-gradable and will be collected by the invigilator at the end of the examination.
16. You will be allowed to take away the carbon-less copy at the end of the examination.
17. Do not tamper with or mutilate the ORS.
18. Write your name, roll number and the name of the examination center and sign with pen in the space provided for this purpose on the original. **Do not write any of these details anywhere else.** Darken the appropriate bubble under each digit of your roll number.

DO NOT BREAK THE SEAL WITHOUT BEING INSTRUCTED TO DO SO BY THE INVIGILATOR

SEAL

Please see the last page of this booklet for rest of the instructions.

mbalop

SPACE FOR ROUGH WORK

88789

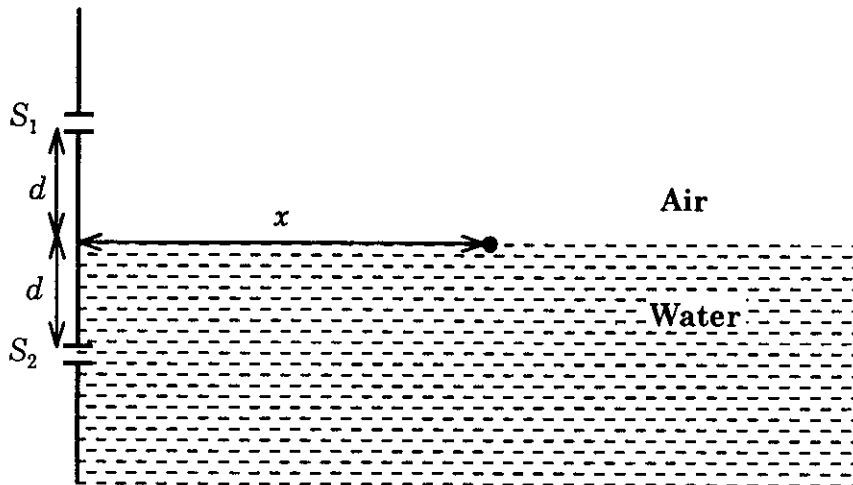
The following information is for your information only. It is not intended to be used as a basis for any action. The information is based on the best available data at the time of preparation. It is subject to change without notice. The information is provided for your use only and is not to be distributed outside your organization. The information is provided for your use only and is not to be distributed outside your organization. The information is provided for your use only and is not to be distributed outside your organization.

PART I : PHYSICS

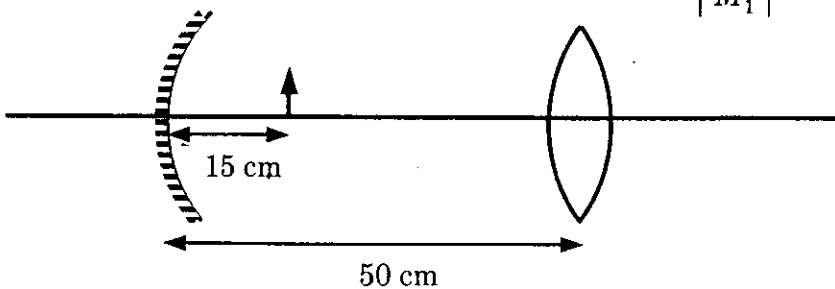
SECTION 1 (Maximum Marks: 32)

- This section contains **EIGHT** questions
- The answer to each question is a **SINGLE DIGIT INTEGER** ranging from 0 to 9, both inclusive
- For each question, darken the bubble corresponding to the correct integer in the ORS
- Marking scheme:
 +4 If the bubble corresponding to the answer is darkened
 0 In all other cases

Q.1 A Young's double slit interference arrangement with slits S_1 and S_2 is immersed in water (refractive index = $4/3$) as shown in the figure. The positions of maxima on the surface of water are given by $x^2 = p^2 m^2 \lambda^2 - d^2$, where λ is the wavelength of light in air (refractive index = 1), $2d$ is the separation between the slits and m is an integer. The value of p is



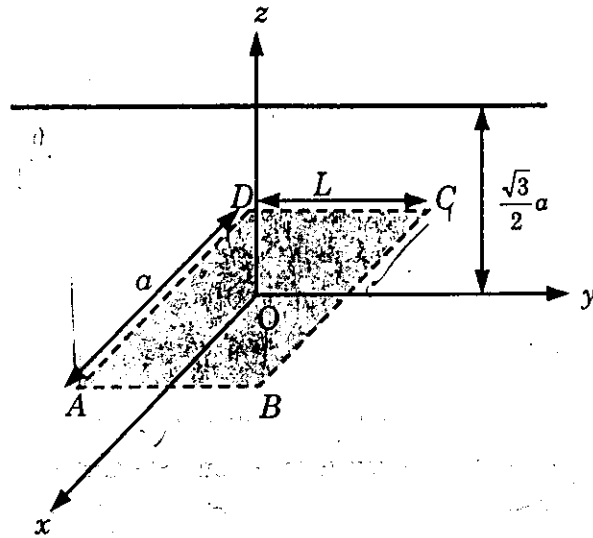
Q.2 Consider a concave mirror and a convex lens (refractive index = 1.5) of focal length 10 cm each, separated by a distance of 50 cm in air (refractive index = 1) as shown in the figure. An object is placed at a distance of 15 cm from the mirror. Its erect image formed by this combination has magnification M_1 . When the set-up is kept in a medium of refractive index $7/6$, the magnification becomes M_2 . The magnitude $\left| \frac{M_2}{M_1} \right|$ is



1.5
 .50
 .5
 2
 ↓

Space for rough work

Q.3 An infinitely long uniform line charge distribution of charge per unit length λ lies parallel to the y -axis in the y - z plane at $z = \frac{\sqrt{3}}{2}a$ (see figure). If the magnitude of the flux of the electric field through the rectangular surface $ABCD$ lying in the x - y plane with its centre at the origin is $\frac{\lambda L}{n\epsilon_0}$ (ϵ_0 = permittivity of free space), then the value of n is



Q.4 Consider a hydrogen atom with its electron in the n^{th} orbital. An electromagnetic radiation of wavelength 90 nm is used to ionize the atom. If the kinetic energy of the ejected electron is 10.4 eV, then the value of n is ($hc = 1242 \text{ eV nm}$)

Q.5 A bullet is fired vertically upwards with velocity v from the surface of a spherical planet. When it reaches its maximum height, its acceleration due to the planet's gravity is $1/4^{\text{th}}$ of its value at the surface of the planet. If the escape velocity from the planet is $v_{\text{esc}} = v\sqrt{N}$, then the value of N is (ignore energy loss due to atmosphere)

Space for rough work

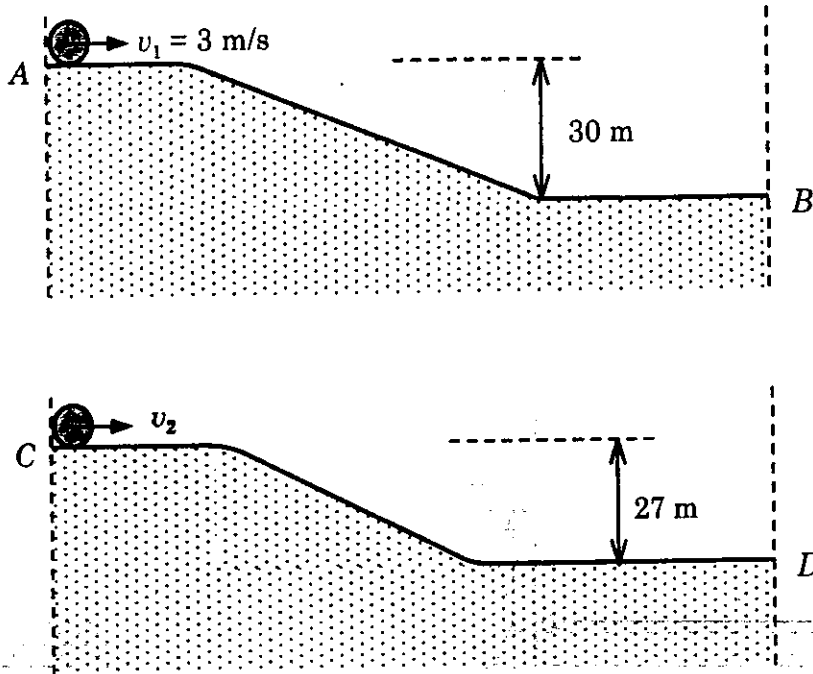
Handwritten rough work for Q.5:

$\frac{GM}{R^2}$
 $2R$
 $-\frac{GM}{(2R)^2}$
 $\frac{GM}{R^2} = \frac{GM}{4R^2}$
 $2R^2 = 4R^2$
 $R = 2R$

$\frac{1}{2}mv^2 = \frac{GMm}{R}$
 $\frac{1}{2}mv^2 = \frac{GMm}{4R}$
 $\frac{1}{2}mv^2 - \frac{GMm}{R} = 0$
 $\frac{1}{2}mv^2 = \frac{GMm}{R}$
 $v^2 = \frac{2GM}{R}$

$v_{\text{esc}} = v\sqrt{N}$
 $v^2 = \frac{v_{\text{esc}}^2}{N}$
 $\frac{2GM}{R} = \frac{v_{\text{esc}}^2}{N}$
 $N = \frac{v_{\text{esc}}^2 R}{2GM}$

- Q.6 Two identical uniform discs roll without slipping on two different surfaces AB and CD (see figure) starting at A and C with linear speeds v_1 and v_2 , respectively, and always remain in contact with the surfaces. If they reach B and D with the same linear speed and $v_1 = 3 \text{ m/s}$, then v_2 in m/s is ($g = 10 \text{ m/s}^2$)



Handwritten notes for Q.6:
 $\frac{1}{2}mv^2$
 $\frac{1}{2}mv^2 = \frac{1}{2}mv^2 + \frac{1}{2}mv^2$
 $m \cdot 10 = 30$

- Q.7 Two spherical stars A and B emit blackbody radiation. The radius of A is 400 times that of B and A emits 10^4 times the power emitted from B . The ratio $\left(\frac{\lambda_A}{\lambda_B}\right)$ of their wavelengths λ_A and λ_B at which the peaks occur in their respective radiation curves is $\frac{1}{2}$
- Q.8 A nuclear power plant supplying electrical power to a village uses a radioactive material of half life T years as the fuel. The amount of fuel at the beginning is such that the total power requirement of the village is 12.5% of the electrical power available from the plant at that time. If the plant is able to meet the total power needs of the village for a maximum period of nT years, then the value of n is

Space for rough work

Handwritten notes for Q.7 and Q.8:

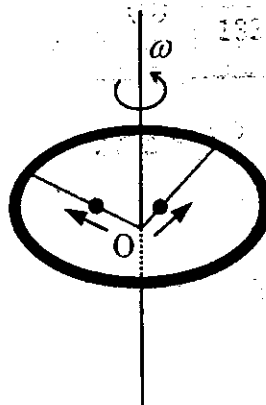
Q.7: $P = 4\pi R^2 \sigma T^4$
 $\frac{P_A}{P_B} = \frac{4\pi R_A^2 \sigma T_A^4}{4\pi R_B^2 \sigma T_B^4} = 10^4$
 $\left(\frac{R_A}{R_B}\right)^2 \left(\frac{T_A}{T_B}\right)^4 = 10^4$
 $(400)^2 \left(\frac{T_A}{T_B}\right)^4 = 10^4$
 $160000 \left(\frac{T_A}{T_B}\right)^4 = 10000$
 $\left(\frac{T_A}{T_B}\right)^4 = \frac{10000}{160000} = \frac{1}{16}$
 $\frac{T_A}{T_B} = \frac{1}{2}$
 $\frac{\lambda_A}{\lambda_B} = \frac{T_B}{T_A} = 2$

Q.8: $P = \frac{E}{t} = \frac{m c^2}{T}$
 $0.125 P = \frac{m c^2}{T}$
 $0.125 \frac{m c^2}{T} = \frac{m c^2}{nT}$
 $0.125 = \frac{1}{n}$
 $n = 8$

SECTION 2 (Maximum Marks: 40)

- This section contains **TEN** questions
- Each question has **FOUR** options (A), (B), (C) and (D). **ONE OR MORE THAN ONE** of these four option(s) is(are) correct
- For each question, darken the bubble(s) corresponding to all the correct option(s) in the ORS
- Marking scheme:
 - +4 If only the bubble(s) corresponding to all the correct option(s) is(are) darkened
 - 0 If none of the bubbles is darkened
 - 2 In all other cases

Q.9 A ring of mass M and radius R is rotating with angular speed ω about a fixed vertical axis passing through its centre O with two point masses each of mass $\frac{M}{8}$ at rest at O . These masses can move radially outwards along two massless rods fixed on the ring as shown in the figure. At some instant the angular speed of the system is $\frac{8}{9}\omega$ and one of the masses is at a distance of $\frac{3}{5}R$ from O . At this instant the distance of the other mass from O is



- (A) $\frac{2}{3}R$ (B) $\frac{1}{3}R$ (C) $\frac{3}{5}R$ (D) $\frac{4}{5}R$

Space for rough work

Handwritten calculations for conservation of angular momentum:

$$MR^2\omega = MR^2\left(\frac{8}{9}\omega\right) + \frac{M}{8}R^2\left(\frac{8}{9}\omega\right) + \frac{M}{8}r^2\left(\frac{8}{9}\omega\right)$$

$$MR^2\omega = \frac{8MR^2\omega}{9} + \frac{MR^2\omega}{9} + \frac{Mr^2\omega}{9}$$

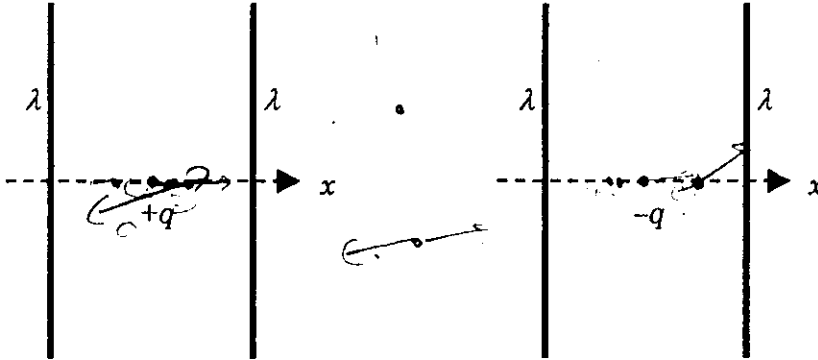
$$MR^2\omega = \frac{9MR^2\omega}{9} + \frac{Mr^2\omega}{9}$$

$$MR^2\omega - MR^2\omega = \frac{Mr^2\omega}{9}$$

$$0 = \frac{Mr^2\omega}{9}$$

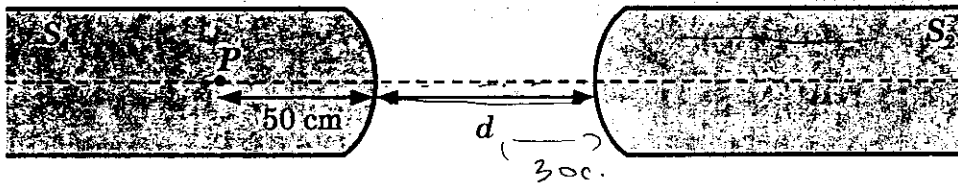
Other scribbles include: $MR^2\omega = MR^2\omega + \frac{M}{8}R^2\left(\frac{8}{9}\omega\right) + \frac{M}{8}r^2\left(\frac{8}{9}\omega\right)$

Q.10 The figures below depict two situations in which two infinitely long static line charges of constant positive line charge density λ are kept parallel to each other. In their resulting electric field, point charges q and $-q$ are kept in equilibrium between them. The point charges are confined to move in the x direction only. If they are given a small displacement about their equilibrium positions, then the correct statement(s) is(are)



- (A) Both charges execute simple harmonic motion.
- (B) Both charges will continue moving in the direction of their displacement.
- (C) Charge $+q$ executes simple harmonic motion while charge $-q$ continues moving in the direction of its displacement.
- (D) Charge $-q$ executes simple harmonic motion while charge $+q$ continues moving in the direction of its displacement.

Q.11 Two identical glass rods S_1 and S_2 (refractive index = 1.5) have one convex end of radius of curvature 10 cm. They are placed with the curved surfaces at a distance d as shown in the figure, with their axes (shown by the dashed line) aligned. When a point source of light P is placed inside rod S_1 on its axis at a distance of 50 cm from the curved face, the light rays emanating from it are found to be parallel to the axis inside S_2 . The distance d is



- (A) 60 cm
- (B) 70 cm
- (C) 80 cm
- (D) 90 cm

Space for rough work

Handwritten calculations for Q.11:

$$\frac{1}{u} + \frac{1}{v} = \frac{n-1}{R}$$

$$\frac{1}{50} + \frac{1}{d} = \frac{1.5-1}{10}$$

$$\frac{1}{50} + \frac{1}{d} = \frac{0.5}{10}$$

$$\frac{1}{d} = \frac{0.5}{10} - \frac{1}{50}$$

$$\frac{1}{d} = \frac{5}{100} - \frac{2}{100}$$

$$\frac{1}{d} = \frac{3}{100}$$

$$d = \frac{100}{3} \approx 33.33 \text{ cm}$$

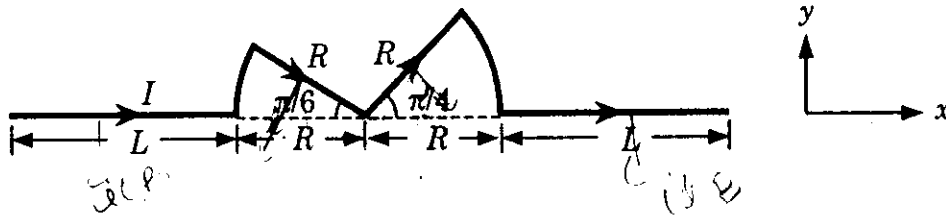
Handwritten calculations for Q.10:

$$\frac{(1.5)}{u} = \frac{(1-1.5)}{R}$$

$$\frac{1.5}{u} = \frac{-0.5}{R}$$

$$u = -3R$$

Q.12 A conductor (shown in the figure) carrying constant current I is kept in the x - y plane in a uniform magnetic field \vec{B} . If F is the magnitude of the total magnetic force acting on the conductor, then the correct statement(s) is(are)



- (A) If \vec{B} is along \hat{z} , $F \propto (L+R)$ (B) If \vec{B} is along \hat{x} , $F=0$
 (C) If \vec{B} is along \hat{y} , $F \propto (L+R)$ (D) If \vec{B} is along \hat{z} , $F=0$

Q.13 A container of fixed volume has a mixture of one mole of hydrogen and one mole of helium in equilibrium at temperature T . Assuming the gases are ideal, the correct statement(s) is(are)

- (A) The average energy per mole of the gas mixture is $2RT$.
 (B) The ratio of speed of sound in the gas mixture to that in helium gas is $\sqrt{6/5}$.
 (C) The ratio of the rms speed of helium atoms to that of hydrogen molecules is $1/2$.
 (D) The ratio of the rms speed of helium atoms to that of hydrogen molecules is $1/\sqrt{2}$.

Space for rough work

Handwritten calculations for Q.13:

$$\frac{1}{2} \left(\frac{3}{2} RT + \frac{5}{2} RT \right) = \frac{4RT}{2}$$

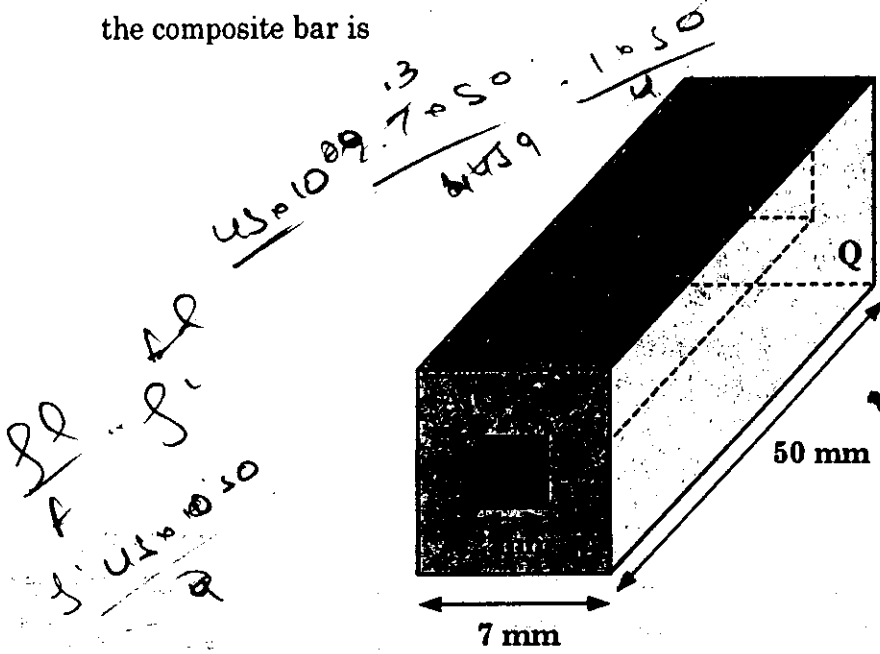
$$\frac{1}{2} \left(\frac{3}{2} RT + \frac{5}{2} RT \right) = 2RT$$

$$\frac{1}{2} \left(\frac{3}{2} RT + \frac{5}{2} RT \right) = 2RT$$

$$\frac{1}{2} \left(\frac{3}{2} RT + \frac{5}{2} RT \right) = 2RT$$

$$\frac{1}{2} \left(\frac{3}{2} RT + \frac{5}{2} RT \right) = 2RT$$

Q.14 In an aluminum (Al) bar of square cross section, a square hole is drilled and is filled with iron (Fe) as shown in the figure. The electrical resistivities of Al and Fe are $2.7 \times 10^{-8} \Omega \text{ m}$ and $1.0 \times 10^{-7} \Omega \text{ m}$, respectively. The electrical resistance between the two faces P and Q of the composite bar is



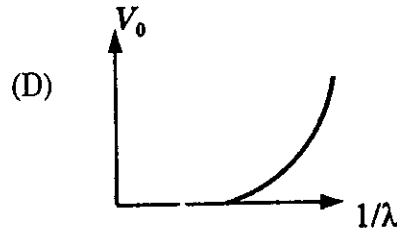
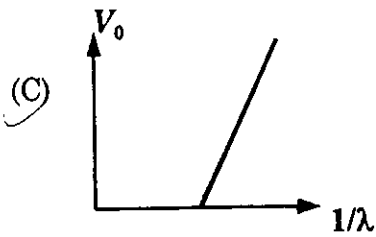
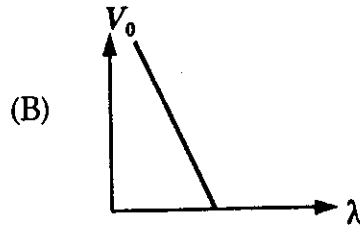
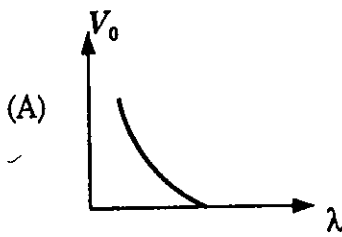
$\frac{1}{R_{Fe}} = \frac{1}{R_{Al}} + \frac{1}{R_{Fe}}$
 $R_{Fe} = \frac{\rho_{Fe} L}{A_2}$
 $R_{Al} = \frac{\rho_{Al} L}{A_1}$
 $\frac{1}{R} = \frac{\rho_{Al}}{A_1 L} + \frac{\rho_{Fe}}{A_2 L}$

- (A) $\frac{2475}{64} \mu\Omega$ (B) $\frac{1875}{64} \mu\Omega$ (C) $\frac{1875}{49} \mu\Omega$ (D) $\frac{2475}{132} \mu\Omega$

Space for rough work

$\frac{A_1}{\rho_1} = \frac{A_2}{\rho_2}$
 $2.7 \times 10^{-8} \times 49 = 1.0 \times 10^{-7} \times 4$
 $1.323 \times 10^{-6} = 4 \times 10^{-7}$
 $1.323 \times 10^{-6} = 0.4 \times 10^{-6}$
 $1.323 = 0.4$
 $1.323 \times 10^3 = 400$
 $1323 = 400$
 $1323 - 400 = 923$
 $923 - 400 = 523$
 $523 - 400 = 123$
 $123 - 400 = -277$
 277
 1323
 400
 923
 400
 523
 400
 123
 400
 -277

Q.15 For photo-electric effect with incident photon wavelength λ , the stopping potential is V_0 . Identify the correct variation(s) of V_0 with λ and $1/\lambda$.



Space for rough work

Handwritten notes:
 $V_0 = \frac{hc}{\lambda} - \phi$
 $V_0 \propto \frac{1}{\lambda}$
 $V_0 \propto \lambda^{-1}$
 $V_0 \propto \lambda^{-1}$

Q.16. Consider a Vernier callipers in which each 1 cm on the main scale is divided into 8 equal divisions and a screw gauge with 100 divisions on its circular scale. In the Vernier callipers, 5 divisions of the Vernier scale coincide with 4 divisions on the main scale and in the screw gauge, one complete rotation of the circular scale moves it by two divisions on the linear scale. Then:

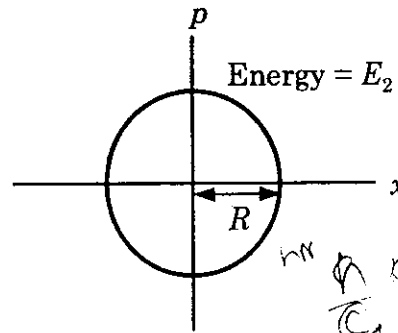
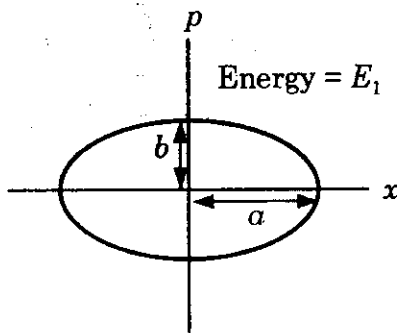
- (A) If the pitch of the screw gauge is twice the least count of the Vernier callipers, the least count of the screw gauge is 0.01 mm.
- (B) If the pitch of the screw gauge is twice the least count of the Vernier callipers, the least count of the screw gauge is 0.005 mm.
- (C) If the least count of the linear scale of the screw gauge is twice the least count of the Vernier callipers, the least count of the screw gauge is 0.01 mm.
- (D) If the least count of the linear scale of the screw gauge is twice the least count of the Vernier callipers, the least count of the screw gauge is 0.005 mm.

Q.17 Planck's constant h , speed of light c and gravitational constant G are used to form a unit of length L and a unit of mass M . Then the correct option(s) is(are)

- (A) $M \propto \sqrt{c}$
- (B) $M \propto \sqrt{G}$
- (C) $L \propto \sqrt{h}$
- (D) $L \propto \sqrt{G}$

Q.18 Two independent harmonic oscillators of equal mass are oscillating about the origin with angular frequencies ω_1 and ω_2 and have total energies E_1 and E_2 , respectively. The

variations of their momenta p with positions x are shown in the figures. If $\frac{a}{b} = n^2$ and $\frac{a}{R} = n$, then the correct equation(s) is(are)



- (A) $E_1\omega_1 = E_2\omega_2$
- (B) $\frac{\omega_2}{\omega_1} = n^2$
- (C) $\omega_1\omega_2 = n^2$
- (D) $\frac{E_1}{\omega_1} = \frac{E_2}{\omega_2}$

Space for rough work

SECTION 3 (Maximum Marks: 16)

- This section contains **TWO** questions
- Each question contains two columns, **Column I** and **Column II**
- **Column I** has **four** entries (A), (B), (C) and (D)
- **Column II** has **five** entries (P), (Q), (R), (S) and (T)
- Match the entries in **Column I** with the entries in **Column II**
- One or more entries in **Column I** may match with one or more entries in **Column II**
- The ORS contains a 4×5 matrix whose layout will be similar to the one shown below:

(A)	(P)	(Q)	(R)	(S)	(T)
(B)	(P)	(Q)	(R)	(S)	(T)
(C)	(P)	(Q)	(R)	(S)	(T)
(D)	(P)	(Q)	(R)	(S)	(T)

- For each entry in **Column I**, darken the bubbles of all the matching entries. For example, if entry (A) in **Column I** matches with entries (Q), (R) and (T), then darken these three bubbles in the ORS. Similarly, for entries (B), (C) and (D).
- Marking scheme:
For each entry in Column I,
 +2 If only the bubble(s) corresponding to all the correct match(es) is(are) darkened
 0 If none of the bubbles is darkened
 -1 In all other cases

Q.19 Match the nuclear processes given in column I with the appropriate option(s) in column II.

Column I	Column II
(A) Nuclear fusion Q	(P) Absorption of thermal neutrons by ${}_{92}^{235}\text{U}$
(B) Fission in a nuclear reactor Q	(Q) ${}_{27}^{60}\text{Co}$ nucleus
(C) β -decay X	(R) Energy production in stars via hydrogen conversion to helium
(D) γ -ray emission S	(S) Heavy water
	(T) Neutrino emission

Space for rough work

Q.20 A particle of unit mass is moving along the x -axis under the influence of a force and its total energy is conserved. Four possible forms of the potential energy of the particle are given in column I (a and U_0 are constants). Match the potential energies in column I to the corresponding statement(s) in column II.

Column I

Column II

(A) $U_1(x) = \frac{U_0}{2} \left[1 - \left(\frac{x}{a} \right)^2 \right]^2$

(P) The force acting on the particle is zero at $x = a$.

(B) $U_2(x) = \frac{U_0}{2} \left(\frac{x}{a} \right)^2$

(Q) The force acting on the particle is zero at $x = 0$.

(C) $U_3(x) = \frac{U_0}{2} \left(\frac{x}{a} \right)^2 \exp \left[- \left(\frac{x}{a} \right)^2 \right]$

(R) The force acting on the particle is zero at $x = -a$.

(D) $U_4(x) = \frac{U_0}{2} \left[\frac{x}{a} - \frac{1}{3} \left(\frac{x}{a} \right)^3 \right]$

(S) The particle experiences an attractive force towards $x = 0$ in the region $|x| < a$.

(T) The particle with total energy $\frac{U_0}{4}$ can oscillate about the point $x = -a$.

$\frac{U_0}{20}$
 $\frac{U_0}{20}$
 $\frac{U_0}{20}$
 $\frac{U_0}{20}$

END OF PART I : PHYSICS

(1)

$\frac{U_0}{20}$

$\frac{U_0}{20}$

$\frac{U_0}{2} \left[1 - \frac{x^2}{a^2} \right]^2$

$\frac{U_0}{2} \left[1 + \frac{x^4}{a^4} - \frac{2x^2}{a^2} \right]$

$\frac{4U_0 x^3}{2a^4} + \frac{4U_0 x}{2a^2}$

$\frac{4U_0 x}{2a^2} \left[-x^2 + 1 \right]$

$\frac{4U_0 x}{2a^2} \left[-\frac{x^2}{a^2} + 1 \right]$

$\frac{U_0}{2} \frac{x^2}{a^2}$

$-\frac{2U_0}{2} \frac{x}{a}$

$\frac{U_0 x}{a^2}$

$\frac{4U_0}{9}$

PART II : CHEMISTRY

SECTION 1 (Maximum Marks: 32)

- This section contains **EIGHT** questions
- The answer to each question is a **SINGLE DIGIT INTEGER** ranging from 0 to 9, both inclusive
- For each question, darken the bubble corresponding to the correct integer in the ORS
- Marking scheme:
 +4 If the bubble corresponding to the answer is darkened
 0 In all other cases

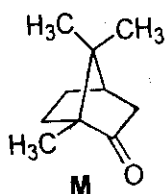
Q.21 All the energy released from the reaction $X \rightarrow Y$, $\Delta_r G^\circ = -193 \text{ kJ mol}^{-1}$ is used for oxidizing M^+ as $M^+ \rightarrow M^{3+} + 2e^-$, $E^\circ = -0.25 \text{ V}$.
 Under standard conditions, the number of moles of M^+ oxidized when one mole of X is converted to Y is
 [F = 96500 C mol⁻¹]

$$\frac{-193 \times 10^3}{2 \times 96500} = 10$$

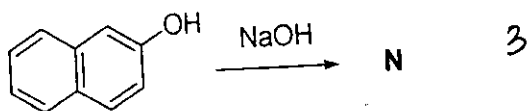
Q.22 If the freezing point of a 0.01 molal aqueous solution of a cobalt(III) chloride-ammonia complex (which behaves as a strong electrolyte) is -0.0558°C , the number of chloride(s) in the coordination sphere of the complex is
 [K_f of water = $1.86 \text{ K kg mol}^{-1}$]

$$\frac{10 \times 1.86}{1.86} = 10$$

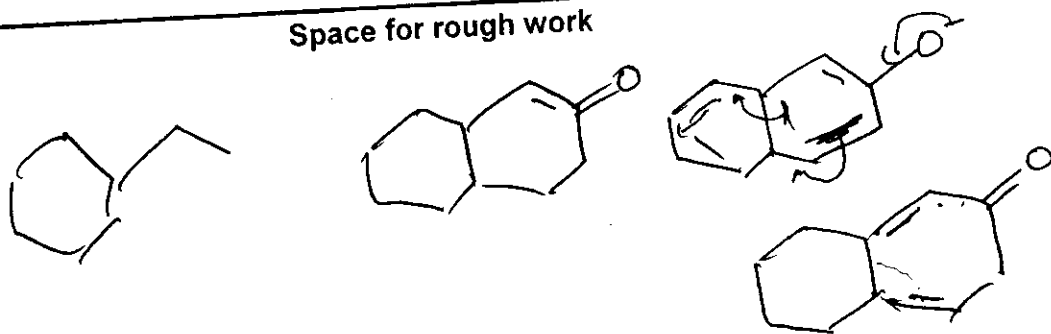
Q.23 The total number of stereoisomers that can exist for M is



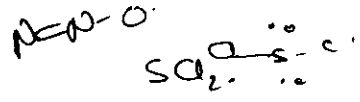
Q.24 The number of resonance structures for N is



Space for rough work



- Q.25 The total number of lone pairs of electrons in N_2O_3 is 8
- Q.26 For the octahedral complexes of Fe^{3+} in SCN^- (thiocyanato-S) and in CN^- ligand environments, the difference between the spin-only magnetic moments in Bohr magnetons (when approximated to the nearest integer) is [Atomic number of Fe = 26]
- Q.27 Among the triatomic molecules/ions, ~~$BeCl_2, N_3^-, N_2O, NO_2^+, O_3, SCl_2, ICl_2^-, I_3^-$~~ and XeF_2 , the total number of linear molecule(s)/ion(s) where the hybridization of the central atom does not have contribution from the d -orbital(s) is 4
 [Atomic number : S = 16, Cl = 17, I = 53 and Xe = 54]
- Q.28 Not considering the electronic spin, the degeneracy of the second excited state ($n = 3$) of H atom is 9, while the degeneracy of the second excited state of H^- is



Space for rough work

$\mu = 2.828 \sqrt{S(S+1)} = 0.0186$
 $\mu = 2.828 \sqrt{3 \cdot 4} = 0.0507$

3s	3p	3d
2	3	5

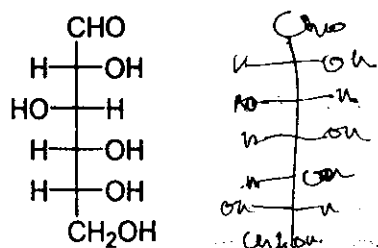
$CO(CO)_3$
 $(CO)_3Cl$

2s 2p

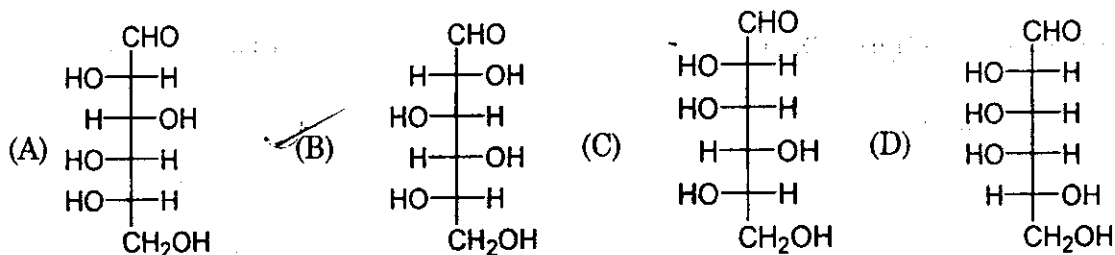
SECTION 2 (Maximum Marks: 40)

- This section contains **TEN** questions
- Each question has **FOUR** options (A), (B), (C) and (D). **ONE OR MORE THAN ONE** of these four option(s) is(are) correct
- For each question, darken the bubble(s) corresponding to all the correct option(s) in the ORS
- Marking scheme:
 - +4 If only the bubble(s) corresponding to all the correct option(s) is(are) darkened
 - 0 If none of the bubbles is darkened
 - 2 In all other cases

Q.29 The structure of D-(+)-glucose is

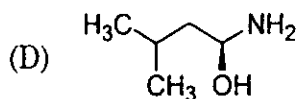
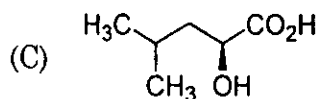
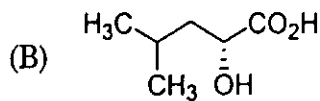
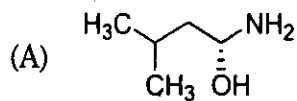
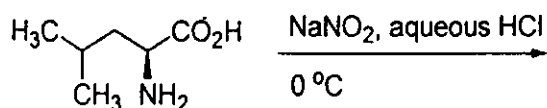


The structure of L-(-)-glucose is



Space for rough work

Q.30. The major product of the reaction is



Q.31 The correct statement(s) about Cr^{2+} and Mn^{3+} is(are)

[Atomic numbers of Cr = 24 and Mn = 25]

O_2

(A) Cr^{2+} is a reducing agent

(B) Mn^{3+} is an oxidizing agent

(C) Both Cr^{2+} and Mn^{3+} exhibit d^4 electronic configuration

(D) When Cr^{2+} is used as a reducing agent, the chromium ion attains d^5 electronic configuration

Q.32 Copper is purified by electrolytic refining of blister copper. The correct statement(s) about this process is (are)

(A) Impure Cu strip is used as cathode

(B) Acidified aqueous CuSO_4 is used as electrolyte

(C) Pure Cu deposits at cathode

(D) Impurities settle as anode-mud

Q.33 Fe^{3+} is reduced to Fe^{2+} by using

(A) H_2O_2 in presence of NaOH

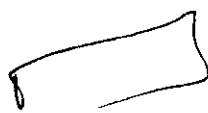
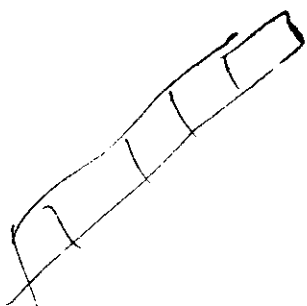
(B) Na_2O_2 in water

(C) H_2O_2 in presence of H_2SO_4

(D) Na_2O_2 in presence of H_2SO_4

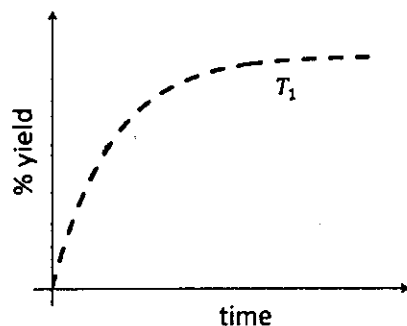
Space for rough work

MnO_4^-

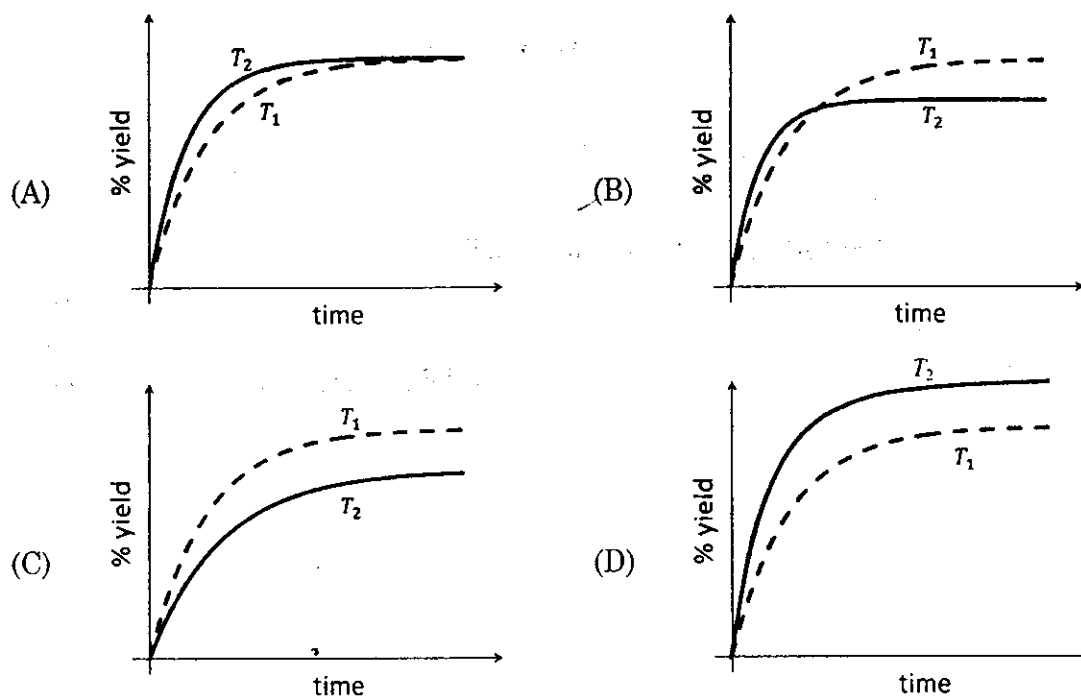


- Q.34 The %yield of ammonia as a function of time in the reaction

$$\text{N}_2(\text{g}) + 3\text{H}_2(\text{g}) \rightleftharpoons 2\text{NH}_3(\text{g}), \Delta H < 0$$
 at (P, T_1) is given below.



If this reaction is conducted at (P, T_2) , with $T_2 > T_1$, the %yield of ammonia as a function of time is represented by

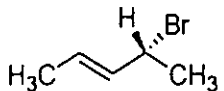
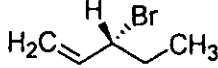
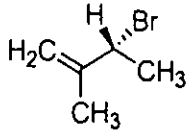
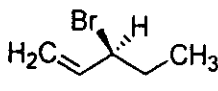


- Q.35 If the unit cell of a mineral has cubic close packed (ccp) array of oxygen atoms with m fraction of octahedral holes occupied by aluminium ions and n fraction of tetrahedral holes occupied by magnesium ions, m and n , respectively, are

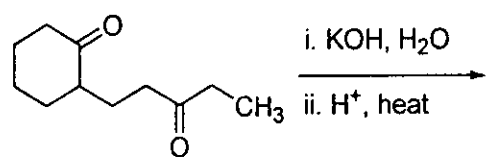
- (A) $\frac{1}{2}, \frac{1}{8}$ (B) $1, \frac{1}{4}$ (C) $\frac{1}{2}, \frac{1}{2}$ (D) $\frac{1}{4}, \frac{1}{8}$

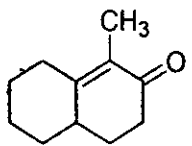
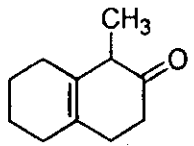
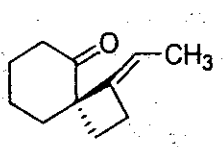
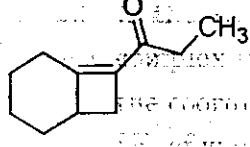
Space for rough work

Q.36 Compound(s) that on hydrogenation produce(s) optically inactive compound(s) is(are)

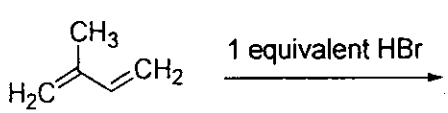
- (A) 
- (B) 
- (C) 
- (D) 

Q.37 The major product of the following reaction is



- (A) 
- (B) 
- (C) 
- (D) 

Q.38 In the following reaction, the major product is



- (A) 
- (B) 
- (C) 
- (D) 

Space for rough work

15
61

SECTION 3 (Maximum Marks: 16)

- This section contains **TWO** questions
- Each question contains two columns, **Column I** and **Column II**
- **Column I** has **four** entries (A), (B), (C) and (D)
- **Column II** has **five** entries (P), (Q), (R), (S) and (T)
- Match the entries in **Column I** with the entries in **Column II**
- One or more entries in **Column I** may match with one or more entries in **Column II**
- The ORS contains a 4×5 matrix whose layout will be similar to the one shown below:

(A)	(P)	(Q)	(R)	(S)	(T)
(B)	(P)	(Q)	(R)	(S)	(T)
(C)	(P)	(Q)	(R)	(S)	(T)
(D)	(P)	(Q)	(R)	(S)	(T)

For each entry in **Column I**, darken the bubbles of all the matching entries. For example, if entry (A) in **Column I** matches with entries (Q), (R) and (T), then darken these three bubbles in the ORS. Similarly, for entries (B), (C) and (D).

Marking scheme:

For each entry in Column I,

- +2 If only the bubble(s) corresponding to all the correct match(es) is(are) darkened
- 0 If none of the bubbles is darkened
- 1 In all other cases

9 Match the anionic species given in Column I that are present in the ore(s) given in Column II.

Column I	Column II
(A) Carbonate	(P) Siderite
(B) Sulphide	(Q) Malachite
(C) Hydroxide	(R) Bauxite
(D) Oxide	(S) Calamine
	(T) Argentite

Space for rough work

Q.40 Match the thermodynamic processes given under Column I with the expressions given under Column II.

Column I	Column II
(A) Freezing of water at 273 K and 1 atm R^T	(P) $q = 0$
(B) Expansion of 1 mol of an ideal gas into a vacuum under isolated conditions Q, S^T	(Q) $w = 0$
(C) Mixing of equal volumes of two ideal gases at constant temperature and pressure in an isolated container	(R) $\Delta S_{sys} < 0$
(D) Reversible heating of $H_2(g)$ at 1 atm from 300 K to 600 K, followed by reversible cooling to 300 K at 1 atm A, S^T	(S) $\Delta U = 0$
	(T) $\Delta G = 0$

END OF PART II : CHEMISTRY

PART III : MATHEMATICS

SECTION 1 (Maximum Marks: 32)

- This section contains **EIGHT** questions
- The answer to each question is a **SINGLE DIGIT INTEGER** ranging from 0 to 9, both inclusive
- For each question, darken the bubble corresponding to the correct integer in the ORS
- Marking scheme:
 - +4 If the bubble corresponding to the answer is darkened
 - 0 In all other cases

Q.41 A cylindrical container is to be made from certain solid material with the following constraints: It has a fixed inner volume of $V \text{ mm}^3$, has a 2 mm thick solid wall and is open at the top. The bottom of the container is a solid circular disc of thickness 2 mm and is of radius equal to the outer radius of the container.

If the volume of the material used to make the container is minimum when the inner radius of the container is 10 mm, then the value of $\frac{V}{250\pi}$ is

Q.42 Let $F(x) = \int_x^{x^2 + \frac{\pi}{6}} 2\cos^2 t dt$ for all $x \in \mathbb{R}$ and $f: \left[0, \frac{1}{2}\right] \rightarrow [0, \infty)$ be a continuous function. For $a \in \left[0, \frac{1}{2}\right]$, if $F'(a) + 2$ is the area of the region bounded by $x = 0$, $y = 0$, $y = f(x)$ and $x = a$, then $f(0)$ is

Q.43 The number of distinct solutions of the equation

$$\frac{5}{4}\cos^2 2x + \cos^4 x + \sin^4 x + \cos^6 x + \sin^6 x = 2$$

in the interval $[0, 2\pi]$ is

Space for rough work

- Q.44 Let the curve C be the mirror image of the parabola $y^2 = 4x$ with respect to the line $x + y + 4 = 0$. If A and B are the points of intersection of C with the line $y = -5$, then the distance between A and B is
- Q.45 The minimum number of times a fair coin needs to be tossed, so that the probability of getting at least two heads is at least 0.96, is
- Q.46 Let n be the number of ways in which 5 boys and 5 girls can stand in a queue in such a way that all the girls stand consecutively in the queue. Let m be the number of ways in which 5 boys and 5 girls can stand in a queue in such a way that exactly four girls stand consecutively in the queue. Then the value of $\frac{m}{n}$ is
- Q.47 If the normals of the parabola $y^2 = 4x$ drawn at the end points of its latus rectum are tangents to the circle $(x - 3)^2 + (y + 2)^2 = r^2$, then the value of r^2 is
- Q.48 Let $f: \mathbb{R} \rightarrow \mathbb{R}$ be a function defined by $f(x) = \begin{cases} [x], & x \leq 2 \\ 0, & x > 2 \end{cases}$,

where $[x]$ is the greatest integer less than or equal to x . If $I = \int_{-1}^2 \frac{xf(x^2)}{2+f(x+1)} dx$, then the value of $(4I - 1)$ is

Space for rough work

Handwritten notes on the left side of the rough work area, including a diagram of a rectangle with a smaller rectangle inside, and some calculations involving factorials and numbers like 6, 7, 8, 4, 5.

6 | 8 | 5
 7 | 4 |
 11111111

2
 3
 -1

Handwritten notes on the right side of the rough work area, including a diagram of a rectangle with a smaller rectangle inside, and calculations involving factorials and numbers like 6, 7, 4, 5.

6 | 8 | 5 |
 7 | 4 |
 (7) | 4 |

6 x 7 | 4 |
 6 | 8 | 5

6 x

SECTION 2 (Maximum Marks: 40)

- This section contains **TEN** questions
- Each question has **FOUR** options (A), (B), (C) and (D). **ONE OR MORE THAN ONE** of these four option(s) is(are) correct
- For each question, darken the bubble(s) corresponding to all the correct option(s) in the ORS
- Marking scheme:
 - +4 If only the bubble(s) corresponding to all the correct option(s) is(are) darkened
 - 0 If none of the bubbles is darkened
 - 2 In all other cases

Q.49 In \mathbb{R}^3 , let L be a straight line passing through the origin. Suppose that all the points on L are at a constant distance from the two planes $P_1 : x + 2y - z + 1 = 0$ and $P_2 : 2x - y + z - 1 = 0$. Let M be the locus of the feet of the perpendiculars drawn from the points on L to the plane P_1 . Which of the following points lie(s) on M ?

- (A) $\left(0, -\frac{5}{6}, -\frac{2}{3}\right)$ (B) $\left(-\frac{1}{6}, -\frac{1}{3}, \frac{1}{6}\right)$ (C) $\left(-\frac{5}{6}, 0, \frac{1}{6}\right)$ (D) $\left(-\frac{1}{3}, 0, \frac{2}{3}\right)$

Q.50 Let P and Q be distinct points on the parabola $y^2 = 2x$ such that a circle with PQ as diameter passes through the vertex O of the parabola. If P lies in the first quadrant and the area of the triangle ΔOPQ is $3\sqrt{2}$, then which of the following is (are) the coordinates of P ?

- (A) $(4, 2\sqrt{2})$ (B) $(9, 3\sqrt{2})$ (C) $\left(\frac{1}{4}, \frac{1}{\sqrt{2}}\right)$ (D) $(1, \sqrt{2})$

Q.51 Let $y(x)$ be a solution of the differential equation $(1 + e^x)y' + ye^x = 1$. If $y(0) = 2$, then which of the following statements is (are) true?

- (A) $y(-4) = 0$
 (B) $y(-2) = 0$
 (C) $y(x)$ has a critical point in the interval $(-1, 0)$
 (D) $y(x)$ has no critical point in the interval $(-1, 0)$

Space for rough work

Q.52 Consider the family of all circles whose centers lie on the straight line $y = x$. If this family of circles is represented by the differential equation $Py'' + Qy' + 1 = 0$, where P, Q are functions of x, y and y' (here $y' = \frac{dy}{dx}$, $y'' = \frac{d^2y}{dx^2}$), then which of the following statements is (are) true?

- (A) $P = y + x$
- (B) $P = y - x$
- (C) $P + Q = 1 - x + y + y' + (y')^2$
- (D) $P - Q = x + y - y' - (y')^2$

Q.53 Let $g: \mathbb{R} \rightarrow \mathbb{R}$ be a differentiable function with $g(0) = 0$, $g'(0) = 0$ and $g'(1) \neq 0$. Let

$$f(x) = \begin{cases} \frac{x}{|x|} g(x), & x \neq 0 \\ 0, & x = 0 \end{cases}$$

$$h(x) = \begin{cases} \frac{g(x)}{|x|}, & x \neq 0 \\ 0, & x = 0 \end{cases}$$

and $h(x) = e^{|x|}$ for all $x \in \mathbb{R}$. Let $(f \circ h)(x)$ denote $f(h(x))$ and $(h \circ f)(x)$ denote $h(f(x))$. Then which of the following is (are) true?

- (A) f is differentiable at $x = 0$
- (B) h is differentiable at $x = 0$
- (C) $f \circ h$ is differentiable at $x = 0$
- (D) $h \circ f$ is differentiable at $x = 0$

Space for rough work

Handwritten notes and calculations:

- Derivatives of $e^{|x|}$ and $e^{-|x|}$ are shown: $\frac{d}{dx} e^{|x|} = e^{|x|} \cdot \frac{d|x|}{dx} = e^{|x|} \cdot \frac{x}{|x|}$.
- Analysis of $f(x) = \frac{x}{|x|} g(x)$ at $x=0$: $\lim_{x \rightarrow 0} \frac{f(x)}{x} = \lim_{x \rightarrow 0} \frac{g(x)}{|x|} = \lim_{x \rightarrow 0} h(x) = 0$.
- Analysis of $h(x) = \frac{g(x)}{|x|}$ at $x=0$: $\lim_{x \rightarrow 0} \frac{h(x)}{x} = \lim_{x \rightarrow 0} \frac{g(x)}{|x|^2} = 0$ since $g'(0) = 0$.
- Analysis of $f \circ h$ at $x=0$: $(f \circ h)(x) = \frac{h(x)}{|h(x)|} g(h(x)) = \frac{g(x)}{|x|} \cdot \frac{x}{|x|} g(x) = \frac{g(x)^2}{|x|}$. $\lim_{x \rightarrow 0} \frac{(f \circ h)(x)}{x} = \lim_{x \rightarrow 0} \frac{g(x)^2}{|x|^2} = 0$.
- Analysis of $h \circ f$ at $x=0$: $(h \circ f)(x) = \frac{f(x)}{|f(x)|} = \frac{x}{|x|} \frac{g(x)}{|g(x)|} = \frac{x}{|x|} \frac{g(x)}{|g(x)|}$. $\lim_{x \rightarrow 0} \frac{(h \circ f)(x)}{x} = \lim_{x \rightarrow 0} \frac{g(x)}{|g(x)|} \frac{1}{|x|} = \frac{g'(0)}{|g'(0)|} \cdot \frac{1}{0} = \infty$.

$$\sin \frac{\pi}{2} \sin \left(\frac{\pi}{2} \sin x \right)$$

$$\sin \frac{\pi}{2} \sin \left(\frac{\pi}{2} \sin \left(\frac{\pi}{2} \sin x \right) \right)$$

Q.54 Let $f(x) = \sin\left(\frac{\pi}{6} \sin\left(\frac{\pi}{2} \sin x\right)\right)$ for all $x \in \mathbb{R}$ and $g(x) = \frac{\pi}{2} \sin x$ for all $x \in \mathbb{R}$. Let $(f \circ g)(x)$ denote $f(g(x))$ and $(g \circ f)(x)$ denote $g(f(x))$. Then which of the following is (are) true?

- (A) Range of f is $\left[-\frac{1}{2}, \frac{1}{2}\right]$
- (B) Range of $f \circ g$ is $\left[-\frac{1}{2}, \frac{1}{2}\right]$
- (C) $\lim_{x \rightarrow 0} \frac{f(x)}{g(x)} = \frac{\pi}{6}$
- (D) There is an $x \in \mathbb{R}$ such that $(g \circ f)(x) = 1$

Q.55 Let ΔPQR be a triangle. Let $\vec{a} = \vec{QR}$, $\vec{b} = \vec{RP}$ and $\vec{c} = \vec{PQ}$. If $|\vec{a}| = 12$, $|\vec{b}| = 4\sqrt{3}$ and $\vec{b} \cdot \vec{c} = 24$, then which of the following is (are) true?

- (A) $\frac{|\vec{c}|^2}{2} - |\vec{a}| = 12$
- (B) $\frac{|\vec{c}|^2}{2} + |\vec{a}| = 30$
- (C) $|\vec{a} \times \vec{b} + \vec{c} \times \vec{a}| = 48\sqrt{3}$
- (D) $\vec{a} \cdot \vec{b} = -72$

Space for rough work

Handwritten rough work including calculations for Q.55, such as $|\vec{c}| = 6$, $\vec{a} \cdot \vec{b} = -72$, and $|\vec{a} \times \vec{b} + \vec{c} \times \vec{a}| = 48\sqrt{3}$.

Q.56 Let X and Y be two arbitrary, 3×3 , non-zero, skew-symmetric matrices and Z be an arbitrary 3×3 , non-zero, symmetric matrix. Then which of the following matrices is (are) skew symmetric?

- (A) $Y^3Z^4 - Z^4Y^3$ (B) $X^{44} + Y^{44}$
 (C) $X^4Z^3 - Z^3X^4$ (D) $X^{23} + Y^{23}$

Q.57 Which of the following values of α satisfy the equation

$$\begin{vmatrix} (1+\alpha)^2 & (1+2\alpha)^2 & (1+3\alpha)^2 \\ (2+\alpha)^2 & (2+2\alpha)^2 & (2+3\alpha)^2 \\ (3+\alpha)^2 & (3+2\alpha)^2 & (3+3\alpha)^2 \end{vmatrix} = -648\alpha ?$$

- (A) -4 (B) 9 (C) -9 (D) 4

Q.58 In \mathbb{R}^3 , consider the planes $P_1: y=0$ and $P_2: x+z=1$. Let P_3 be a plane, different from P_1 and P_2 , which passes through the intersection of P_1 and P_2 . If the distance of the point $(0, 1, 0)$ from P_3 is 1 and the distance of a point (α, β, γ) from P_3 is 2, then which of the following relations is (are) true?

- (A) $2\alpha + \beta + 2\gamma + 2 = 0$ (B) $2\alpha - \beta + 2\gamma + 4 = 0$
 (C) $2\alpha + \beta - 2\gamma - 10 = 0$ (D) $2\alpha - \beta + 2\gamma - 8 = 0$

Space for rough work

Handwritten rough work showing calculations for the intersection of planes $P_1: y=0$ and $P_2: x+z=1$. The work includes the equations $x+z=1$ and $y=0$, and various algebraic manipulations and substitutions.

SECTION 3 (Maximum Marks: 16)

- This section contains **TWO** questions
- Each question contains two columns, **Column I** and **Column II**
- **Column I** has four entries (A), (B), (C) and (D)
- **Column II** has five entries (P), (Q), (R), (S) and (T)
- Match the entries in **Column I** with the entries in **Column II**
- One or more entries in **Column I** may match with one or more entries in **Column II**
- The ORS contains a 4×5 matrix whose layout will be similar to the one shown below:

(A)	(P)	(Q)	(R)	(S)	(T)
(B)	(P)	(Q)	(R)	(S)	(T)
(C)	(P)	(Q)	(R)	(S)	(T)
(D)	(P)	(Q)	(R)	(S)	(T)

- For each entry in **Column I**, darken the bubbles of **all the matching entries**. For example, if entry (A) in **Column I** matches with entries (Q), (R) and (T), then darken these three bubbles in the ORS. Similarly, for entries (B), (C) and (D).

- Marking scheme:

For each entry in **Column I**.

- +2 If only the bubble(s) corresponding to all the correct match(es) is(are) darkened
- 0 If none of the bubbles is darkened
- 1 In all other cases

Space for rough work

Q.59.

Column I

Column II

(A) In \mathbb{R}^2 , if the magnitude of the projection vector of the vector $\alpha \hat{i} + \beta \hat{j}$ on $\sqrt{3}\hat{i} + \hat{j}$ is $\sqrt{3}$ and if $\alpha = 2 + \sqrt{3}\beta$, then possible value(s) of $|\alpha|$ is (are)

(P) 1

(B) Let a and b be real numbers such that the function

(Q) 2

$$f(x) = \begin{cases} -3ax^2 - 2, & x < 1 \\ bx + a^2, & x \geq 1 \end{cases}$$

is differentiable for all $x \in \mathbb{R}$. Then possible value(s) of a is (are)

(C) Let $\omega \neq 1$ be a complex cube root of unity. If $(3 - 3\omega + 2\omega^2)^{4n+3} + (2 + 3\omega - 3\omega^2)^{4n+3} + (-3 + 2\omega + 3\omega^2)^{4n+3} = 0$, then possible value(s) of n is (are)

(R) 3

(D) Let the harmonic mean of two positive real numbers a and b be 4. If q is a positive real number such that $a, 5, q, b$ is an arithmetic progression, then the value(s) of $|q - a|$ is (are)

(S) 4

(T) 5

Space for rough work

$\sqrt{3} + 1$

$(2 + \sqrt{3}\beta)\hat{i} + \beta\hat{j}$

$2\sqrt{3}\beta, 3\beta, \beta$ $(2 + \sqrt{3})/\sqrt{3}\beta + \beta = \sqrt{3} + 2$

$2\sqrt{3}\beta, 4\beta, \frac{2}{\sqrt{3}}\beta$ $2/\sqrt{3}$

$2\sqrt{3}\beta, 2\beta, \beta$ $\sqrt{3}$

$(2 + \sqrt{3}\beta)/\sqrt{3}\beta + 2/\sqrt{3}$

$2\sqrt{3}\beta + 3\beta^2, 2/\sqrt{3}$

$3\beta^2 + 2/\sqrt{3} - 2/\sqrt{3}$

21

Q.60

Column I

Column II

- (A) In a triangle ΔXYZ , let a, b and c be the lengths of the sides opposite to the angles X, Y and Z , respectively. If $2(a^2 - b^2) = c^2$ and $\lambda = \frac{\sin(X - Y)}{\sin Z}$, then possible values of n for which $\cos(n\pi\lambda) = 0$ is (are)
- (B) In a triangle ΔXYZ , let a, b and c be the lengths of the sides opposite to the angles X, Y and Z , respectively. If $1 + \cos 2X - 2\cos 2Y = 2\sin X \sin Y$, then possible value(s) of $\frac{a}{b}$ is (are)
- (C) In \mathbb{R}^2 , let $\sqrt{3}\hat{i} + \hat{j}$, $\hat{i} + \sqrt{3}\hat{j}$ and $\beta\hat{i} + (1 - \beta)\hat{j}$ be the position vectors of X, Y and Z with respect to the origin O , respectively. If the distance of Z from the bisector of the acute angle of OX with OY is $\frac{3}{\sqrt{2}}$, then possible value(s) of $|\beta|$ is (are)
- (D) Suppose that $F(\alpha)$ denotes the area of the region bounded by $x = 0, x = 2, y^2 = 4x$ and $y = |\alpha x - 1| + |\alpha x - 2| + \alpha x$, where $\alpha \in \{0, 1\}$. Then the value(s) of $F(\alpha) + \frac{8}{3}\sqrt{2}$, when $\alpha = 0$ and $\alpha = 1$, is (are)

(P) 1

(Q) 2

(R) 3


(S) 5

(T) 6

END OF THE QUESTION PAPER

SPACE FOR ROUGH WORK

DARKENING THE BUBBLES ON THE ORS :

19. Use a **BLACK BALL POINT PEN** to darken the bubbles in the upper sheet.
20. Darken the bubble **COMPLETELY**.
21. Darken the bubbles **ONLY** if you are sure of the answer.
22. The correct way of darkening a bubble is as shown here: 
23. There is **NO** way to erase or "un-darken" a darkened bubble.
24. The marking scheme given at the beginning of each section gives details of how **darkened** and **not darkened** bubbles are evaluated.

NAME OF THE CANDIDATE ANRUDDHA KUNAR SARAO

ROLL NO 4032407

I HAVE READ ALL THE INSTRUCTIONS
AND SHALL ABIDE BY THEM

I have verified the identity, name and roll
number of the candidate, and that question
paper and ORS codes are the same

Anruddha

[Signature]

Signature of the Candidate

Signature of the Invigilator

Space for rough work