

IBPS BANK CLERK CWE

Held on : 04.12.2011 (Eastern Zone : First Sitting) ● Based on Memory

REASONING

1. In a certain code GRANT is written as UOBHS and PRIDE is written as FEJSQ. How is SOLD written in that code ?

- (1) EPMT
- (2) TPME
- (3) EMPT
- (4) CKNR
- (5) ETPM

2. Four of the following five are alike in a certain way and so form a group. Which is the one that does not belong to that group?

- (1) 19
- (2) 17
- (3) 13
- (4) 27
- (5) 37

3. How many meaningful English words can be made with the second, the fourth, the sixth and the seventh letters of the word STUMBLE using each letter only once in each word?

- (1) None
- (2) One
- (3) Two
- (4) Three
- (5) More than three

4. What should come in place of the question mark (?) in the following letter series based on the English alphabetical order?

BE GJ LO QT ?

- (1) UX
- (2) VY
- (3) SV
- (4) RU
- (5) WZ

5. How many such pairs of letters are there in the word GOVERNMENT each of which has as many letters between them in the word (in both forward and backward directions) as in the English alphabet?

- (1) None
- (2) One
- (3) Two
- (4) Three
- (5) More than three

Directions (6-10) : In the following questions, the symbols δ , %, \$, # and @ are used with the following meaning as illustrated below:

'P δ Q' means 'P is not smaller than Q'.

'P @ Q' means 'P is not greater than Q'.

'P δ Q' means 'P is neither smaller than nor equal to Q'.

'P # Q' means 'P is neither greater than nor equal to Q'.

'P % Q' means 'P is neither smaller than nor greater than Q'.

Now in each of the following questions assuming the given statements to be true, find which of the two conclusions I and II given below them is/are **definitely true**?

Give answer (1) if only Conclusion I is true.

Give answer (2) if only Conclusion II is true.

Give answer (3) if either Conclusion I or II is true.

Give answer (4) if neither Conclusion I nor II is true.

Give answer (5) if both Conclusions I and II are true.

6. Statements :

F @ N, N δ R, H @ R

Conclusions : I. H δ N
II. F # R

7. Statements :

M # T, T @ K, K \$ N

Conclusions : I. M # N
II. K δ M

8. Statements :

T % H, H \$ W

Conclusions : I. W # T
II. W % T

9. Statements :

N δ K, K # D, D % M

Conclusions : I. M δ K
II. D δ N

10. Statements :

J \$ B, B % R, R δ F

Conclusions : I. F # B
II. R @ J

Directions (11-15) : Study the following information carefully and answer the questions given below:

A, B, C, D, E, F and G are sitting around a circle facing the centre, not necessarily in the same order. D is not second to the left of F but D is second to the right of A. C is third to the right of A and C is second to the left of G. B is not an immediate neighbour of G.

11. Who is to the immediate right of C ?

- (1) D
- (2) G
- (3) E
- (4) B
- (5) Data inadequate

12. Who is the only one person sitting between A and G ?

- (1) B
- (2) D
- (3) C
- (4) E
- (5) F

13. Who is to the immediate left of D ?

- (1) B
- (2) C
- (3) A
- (4) Data inadequate
- (5) None of these

14. Who is second to the left of C ?

- (1) B
- (2) G
- (3) F
- (4) Data inadequate
- (5) None of these

15. What is E's position with respect to D ?

- (1) To the immediate right
- (2) To the immediate left
- (3) Third to the right
- (4) Second to the right
- (5) Third to the left

Directions (16-20) : In each question below is given a group of letters followed by four combinations of digits/symbols numbered (1), (2), (3) and (4). You have to find out which of the combinations correctly represents the group of letters based on the coding system and the conditions given below and mark the number of that combination as your answer. If none of the combinations correctly represents the group of letters, mark (5) i.e. 'None of these' as your answer.

Letters	P	M	A	E	J	K	D	R	W	H	I	U	T	F
Digits/Symbols														
Conditions	4	\$	1	2	3	#	5	@	6	%	8	7	9	

- (i) If the first letter is a consonant and the last letter is a vowel, the codes of both these are to be interchanged.
- (ii) If both the first and the last letters are consonants both these are to be coded as per the code of the last letter.
- (iii) If the first letter is vowel and the last letter is a consonant both these are to be coded as '*'

Note : All the remaining letters are to be coded as per their original codes.

16. ERWHKA

- (1) 2@C6#1 (2) 1@C6#2
 (3) 1@C6#1 (4) 2@C6#2
 (5) None of these

17. MPEKDU

- (1) \$42#58 (2) \$42#5\$
 (3) 842#58 (4) 8425#\$
 (5) None of these

18. TMEIUF

- (1) 7\$2%89 (2) 7\$2%87
 (3) 9\$2%87 (4) 9\$2%89
 (5) None of these

19. JTAERI

- (1) %712@3 (2) 3712@3
 (3) *712@* (4) %712@%
 (5) None of these

20. UKTMIH

- (1) *#7\$%6
 (2) 6#7\$%8
 (3) *#7\$%*
 (4) *7#\$%6
 (5) None of these

Directions (21-25) : Each of the questions below consists of a question and two statements numbered I and II given below it. You have to decide whether the data provided in the statements are sufficient to answer the question. Read both the statements and —

Give answer (1) if the data in statement I alone are sufficient to answer the question, while the data in statement II alone are not sufficient to answer the question.

Give answer (2) if the data in statement II alone are sufficient to answer the question, while the data in statement I alone are not sufficient to answer the question.

Give answer (3) if the data either in statement I alone or in statement II alone are sufficient to answer the question.

Give answer (4) if the data given in both the statements I and II together are not sufficient to answer the question.

Give answer (5) if the data in both the statements I and II together are necessary to answer the question.

21. In a row of girls facing North, what is D's position from the left end ?

- I. D is twentieth from the right end.
 II. There are ten girls between B and D.

22. Town M is towards which direction of Town K?

- I. Town K is towards North-West of Town D.
 II. Town M is towards South-East of Town D.

23. How many daughters does P have?

- I. K and M are sisters of T.
 II. T's father is husband of P's mother.

24. On which day of the week from Monday to Sunday did Arun leave for London ?

- I. Arun did not leave for London during the weekend.
 II. Arun's brother left for London on Friday two days after Arun left for London.

25. How is 'new' written in a code language ?

- I. 'new good clothes' is written as '5 3 9' in that code language.
 II. 'good clothes are costly' is written as '9 6 7 3' in that code language.

Directions (26-30) : Study the following information carefully and answer the given questions :

A word and number arrangement machine when given an input line of words and numbers rearranges them following a particular rule in each step. The following is an illustration of input and rearrangement. (All numbers are two-digit numbers.)

- Input : good for everything 19 37 26 all 65
 Step I : all good for everything 19 37 26 65
 Step II : all 65 good for everything 1937 26
 Step III : all 65 everything good for 19 37 26
 Step IV : all 65 everything 37 good for 19 26
 Step V : all 65 everything 37 for good 19 26
 Step VI : all 65 everything 37 for 26 good 19

and Step VI is the last step of the rearrangement as the desired arrangement is reached.

As per the rules followed in the above steps, find out in each of the following questions the appropriate step for the given input. (All numbers are two-digit numbers.)

26. Input : won 13 now 25 72 please go 47

How many steps will be require to complete the rearrangement?

- (1) Four (2) Five
 (3) Six (4) Three
 (5) None of these

27. Step III of an input is :

car 81 desk 15 42 39 tall more

Which of the following will be Step VI ?

- (1) car 81 desk 42 39 15 tall more

(2) car 81 desk 42 15 39
tall more

(3) car 81 desk 42 more
39 15 tall

(4) There will be no such step.

(5) None of these

28. Step II of an input is :

bèll 53 town hall near 27
43 12

How many more steps will be required to complete the rearrangement?

(1) Five

(2) Four

(3) Six

(4) Three

(5) None of these

29. Step II of an input is :

box 93 25 year end 41
32 value

Which of the following is definitely the input?

(1) 25 year end box 93 41
32 value

(2) 25 year end 93 41 32
value box

(3) 9325 box year end 41
32 value

(4) Cannot be determined

(5) None of these

30. Input :

paper dry 37 23 height
call 62 51

Which of the following steps will be the last but one ?

(1) V (2) IV

(3) VI (4) III

(5) None of these

Directions (31-35) : Study the following information carefully and answer the questions given below :

P, Q, R, S, T, V and Ware travelling in three buses A, B and C with at least two of them in any of these buses.

Each of them has a favourite (likes) cuisine viz. Punjabi, Rajasthani, Bengali, Maharashtrian, Gujarati, Kashmiri and Udupi not necessarily in the same order.

Q is travelling in bus B with T. T's favourite cuisine is Udupi. Those who travel in bus 'A' do not like Punjabi and Maharashtrian cuisines. The one who likes Rajast-

hani cuisine travels only with W in bus C. The one whose favourite cuisine is Gujarati does not travel in the same bus with either T or W. P does not travel in bus B. P likes Kashmiri cuisine. S and V are travelling in the same bus. V does not like Bengali cuisine. The one whose favourite cuisine is Maharashtrian does not travel in Bus B.

31. Which of the following combinations is **correct** ?

(1) A-V-Gujarati

(2) B-S-Bengali

(3) C-W-Punjabi

(4) B-Q-Gujarati

(5) All are incorrect

32. Whose favourite cuisine is Rajasthani ?

(1) Q (2) S

(3) V (4) R

(5) Data inadequate

33. What is S's favourite cuisine?

(1) Maharashtrian

(2) Bengali

(3) Rajasthani (4) Kashmiri

(5) Data inadequate

34. What is Q's favourite cuisine?

(1) Kashmiri

(2) Maharashtrian

(3) Punjabi

(4) Data inadequate

(5) None of these

35. In which bus are three of them travelling ?

(1) A only

(2) B only

(3) A or B only

(4) Data inadequate

(5) None of these

Directions (36-40) : In each question below are two statements followed by two conclusions numbered I and II. You have to take the two given statements to be true even if they seem to be at variance from commonly known facts and then decide which of the given conclusions logically follows from the given statements disregarding commonly known facts.

Give answer (1) if only conclusion I follows.

Give answer (2) if only conclusion II follows.

Give answer (3) if either conclusion I or II follows.

Give answer (4) if neither conclusion I nor II follows.

Give answer (5) if both conclusions I and II follow.

36. **Statements :**

No holiday is vacations.

Some vacations are trips.

Conclusions :

I. No trip is a holiday.

II. Some holidays are definitely not trips.

37. **Statements :**

Some kites are birds.

No kite is an aeroplane.

Conclusions :

I. All aeroplanes are birds.

II. Some birds are definitely not kites.

38. **Statements :**

All metals are plastics.

All plastics are fibres.

Conclusions :

I. Atleast some fibres are metals.

II. Some metals are not fibres.

39. **Statements :**

All roads are streets.

No street is a highway.

Conclusions :

I. No highway is a road.

II. All streets are roads.

40. **Statements :**

Some animals are plants.

All plants are rocks.

Conclusions :

I. All plants are animals.

II. Atleast some rocks are animals.

*for Complete Study Materials of
IBPS Clerks Online Examination
visit us at*

www.Guide4BankExams.blogspot.in

ENGLISH LANGUAGE

Directions (41-50) : In each of the questions given below which one of the five answer figures on the right should come after the problem figures on the left, if the sequence were continued ?

Problem Figures

Answer Figures

41. (1) (2) (3) (4) (5)
42. (1) (2) (3) (4) (5)
43. (1) (2) (3) (4) (5)
44. (1) (2) (3) (4) (5)
45. (1) (2) (3) (4) (5)
46. (1) (2) (3) (4) (5)
47. (1) (2) (3) (4) (5)
48. (1) (2) (3) (4) (5)
49. (1) (2) (3) (4) (5)
50. (1) (2) (3) (4) (5)

Directions (51-55) : In each of these questions, two sentences (I) and (II) are given. Each sentence has a blank in it. Five words (1), (2), (3), (4) and (5) are suggested. Out of these, only one fits at both the places in the context of each sentence. Number of that word is the answer.

51. I. Our office decided to organize a party for the _____ couple.

II. She _____ him in conversation to while away some time.

- (1) new (2) engaged
(3) pledged (4) held
(5) encountered

52. I. It is required that you fill out these two _____ to register for the job.

II. This subject has many practical _____ in day to day life.

- (1) forms
(2) applications
(3) relevance
(4) statements
(5) views

53. I. The next _____ of this case is after two months.

II. After the accident her _____ has been affected.

- (1) dates (2) balance
(3) evidence (4) health
(5) hearing

54. I. As a last _____ we had to accept these terms and conditions.

II. This place has become a good tourist _____ now.

- (1) resort (2) step
(3) attraction (4) spot
(5) means

55. I. The organization decided on an hourly minimum _____ of Rs. 35.

II. Will he _____ a war on these fronts to improve things?

- (1) pay
(2) declare
(3) pose
(4) wage
(5) campaign

*for Complete Study Materials of
IBPS Clerks Online Examination
visit us at*

www.Guide4BankExams.blogspot.in

Directions (56-60) : Which of the phrases (1), (2), (3) and (4) given below should replace the phrase given in **bold** in the following sentence to make the sentence grammatically meaningful and correct. If the sentence is correct as it is and 'No correction is required', mark (5) as the answer.

56. One of the factor for her failure is the lack of concern for others.

- (1) The mainly factor
- (2) One off factor
- (3) One of the factors
- (4) Among of the actor
- (5) No correction required

57. In reality, this policy will only lead to more corruption in an already corrupt environment.

- (1) a already corrupt
- (2) already an corrupt
- (3) among already corrupt
- (4) overly corrupt already
- (5) No correction required

58. At currently estimates, the cost of modernizing the airport would be more than double the earlier estimate.

- (1) By currently estimates
- (2) On current estimates
- (3) With estimates currently
- (4) At current estimates
- (5) No correction required

59. No of these moves brought credit to the management.

- (1) Any of these
- (2) Some off these
- (3) None of these
- (4) These of all
- (5) No correction required

60. India has always been primarily an agricultural country.

- (1) always be
- (2) been towards
- (3) become always
- (4) always become
- (5) No correction required

Directions (61-65) : In each question below a sentence with four words printed in **bold** type is given. These are numbered as (1), (2), (3) and (4). One of these four words printed in bold may be either **wrongly spelt or inappropriate** in the context of the sentence. Find out the word, which is wrongly spelt

or inappropriate, if any. The number of that word is your answer. If all the words printed in **bold** are correctly spelt and also appropriate in the context of the sentence, mark (5) i.e. 'All Correct' as your answer.

61. Bye (1)/ the summer of 1939. Hitler was **ready** (2)/ to **unleash** (3)/ his army on **Europe**.(4)/ All correct (5).

62. The two national (1)/ **emblems** (2)/ of India are **of** (3)/ Buddhist **origin**.(4)/ All correct (5)

63. Political (1)/ **desicions** (2)/ **ought** (3)/ to have a **rationale**.(4)/ All correct (5)

64. Traditionalli, (1)/ sales get a **boost** (2)/ in the **festival** (3) **season**.(4)/ All correct (5)

65. Fifteen (1) percent of India's land is **still** (2)/ **covered** (3)/ by **forrests**. (4)/ All correct (5)

Directions (66-80) : Read the following passage to answer the given questions based on it. Some words/phrases are printed in **bold** to help you locate them while answering some of the questions.

Organized retail has **fuelled** new growth categories-like liquid hand wash, breakfast cereals and pet foods in the consumer goods industry, accounting for almost 50% of their sales, said data from market search firm Nielsen. The figures showed some of these new categories got more than 40% of their business from modern retail outlets. The data also suggests how products in these categories reach the neighbourhood kirana stores after they have established themselves in modern trade.

While grocers continue to be an important channel, for the new and evolving categories we saw an increased presence of high-end products in modern trade. For example, **premium** products in laundry detergents, dishwashing, car air fresheners and surface care increased in availability through this format as these products are aimed at **affluent** consumers who are more likely to shop in supermarket/hypermarket outlets and who are willing to pay more for specialized products.

Some other categories that have grown exceptionally and now

account for bulk of the sales from modern retail are frozen and ready-to-eat foods, pet food, diapers, pre-and post-wash products, hair conditioners, and high-end shaving products, besides others. "With the evolution of modern trade, our growth in this channel has been healthy as it is for several other categories. Modern retail is an important part of our business" said managing director, Kellogg India.

What modern retail offers to companies experimenting with new categories is the chance to educate customers which was not the case with a general trade store. "Category creation and market development starts with modern trade but as more consumers start consuming this category, they **penetrate into other channels**," said president, food & FMCG category, Future Group - the country's largest retailer which operates stores like Big Bazaar.

But a point to note here is that modern retailers themselves push their own private brands in these very categories and can emerge as a big threat for the consumers goods and foods companies.

For instance, Big Bazaar's private label Clean Mate is hugely popular and sells more than a brand like Harpic in its own stores. "So, there is a certain amount of conflict and competition that will play out over the next few years which the FMCG companies will have to **watch out for**," said, KPMG's executive director (retail).

In the past there have been instances of retailers boycotting products from big FMCG players on the issue of margins; but as modern retail becomes increasingly significant for pushing new categories, experts say we could see more partnerships being forged between retailers and FMCG companies. "Market development for new categories takes time so brand wars for leadership and consumer franchise will be fought on the modern retail platform. A new brand can overnight compete with **established** companies by tying up with few retailers in these categories." President of Future Group added.

66. Which of the following is being referred to as new growth category?
- (1) Soap cake
 - (2) Fresh fruits
 - (3) Fresh vegetables
 - (4) Liquid Hand-wash
 - (5) Usual groceries
67. Which of the following is being referred to as modern retail outlet?
- (1) Kirana Store
 - (2) On-line Store
 - (3) Door-to-door Selling
 - (4) Road-side Hawkers
 - (5) Supermarket
68. Which of the following best conveys the meaning of the phrase, "watch out for" as used in the passage?
- (1) demand justice
 - (2) avoid conflict
 - (3) be on the alert
 - (4) passively accept
 - (5) open for competition
69. Which of the following is being referred to as 'certain amount of conflict'?
- (1) Retailers selling their own products with products of companies
 - (2) Retailers selling similar products of different consumer companies
 - (3) Offering differential rate of margin for different products
 - (4) New products killing the old products
 - (5) Different retailers selling same category of products
70. The new growth category products—
- (1) reach first the neighbourhood Kirana shop and then the modern retail outlets
 - (2) account for less than 20% of sales in organized retail
 - (3) reach all the outlets almost at the same time
 - (4) first become popular in modern trade outlets before reaching Kirana shops
 - (5) are aimed at the poor section of the society.
71. Which of the following is not true in the context of the passage?

- (1) Clean Mate is a product of an organized retailers
 - (2) Some retailers don't keep some products if the profit margin is not good
 - (3) A new brand can never quickly displace an established brand
 - (4) Kirana store still remains an important channel
 - (5) In future there will be more partnerships between retailers and FMCG Companies
72. Which of the following categories has become very popular through sales from modern retail outlets?
- (1) Frozen foods
 - (2) Computers
 - (3) Cell phones
 - (4) Fresh fruits
 - (5) Soft-drinks
73. Which class/section of people are more likely to shop in Hypermarket outlets?
- (1) Senior citizens
 - (2) Younger generation
 - (3) Rich consumers
 - (4) Poor section
 - (5) Women
74. Which of the following advantages do modern retail outlets provide for new categories of products as compared to general trade stores?
- (1) Higher profit margins
 - (2) Experimenting with new products
 - (3) Competition with similar products
 - (4) Better packing of the product
 - (5) Products at much lower price
75. "..... penetrate into other Channels." Which of the following is being referred to as Channels?
- (1) Products
 - (2) Companies
 - (3) New products
 - (4) Existing products
 - (5) None of these
- Directions (76-78) :** Choose the word which is most nearly the same in meaning to the word printed in **bold**, as used in the passage.

76. **fuelled**
- (1) killed
 - (2) conflicted
 - (3) stimulated
 - (4) contained
 - (5) retained
77. **pushing**
- (1) stalling
 - (2) introducing
 - (3) depressing
 - (4) segregating
 - (5) suggesting
78. **premium**
- (1) superior
 - (2) bonus
 - (3) payable
 - (4) promotional
 - (5) indistinguished
- Directions (79-80) :** Choose the word which is **most opposite** in meaning of the word printed in **bold**, as used in the passage.
79. **established**
- (1) small
 - (2) new
 - (3) orthodox
 - (4) modern
 - (5) remaining
80. **affluent**
- (1) affected
 - (2) rural
 - (3) uneducated
 - (4) poor
 - (5) younger

- Directions (81-90) :** Read each sentence to find out whether there is any grammatical mistake/error in it. The error if any, will be in one part of the sentence. Mark the number of the part with error as your answer. If there is no error, mark (5).
81. The cost of constructing (1) / houses are increased (2) / because of the high (3) / price of cement. (4) / No error (5).
82. According to the Twelfth (1) / Five Year Plan, India should (2) / invest one trillion dollars (3) / in infrastructure projects. (4) / No error (5)
83. To increase the selling (1) / of products in rural areas (2) / the company will hire (3) / over five hundred trainees. (4) / No error (5)
84. We have spent (1) / most of the profits (2) / that we earn (3) / last year on purchasing new computers. (4) / No error (5).
85. The Government has (1) / promised to revise (2) / the pension scheme for bank (3) / staff since next year. (4) / No error (5)

- 86.** If a software company (1)/ sends its employees abroad (2)/ to work for a foreign client, they (3)/ pays them a daily allowance. (4) No error (5).
- 87.** As per RBI guidelines (1)/ a bank account in which (2)/ there is no transactions for (3)/ two years is a dormant account. (4)/ No error (5).
- 88.** Farmers can easy (1)/ get loans under (2)/ the Kisan Credit Card Scheme which (3)/ was launched by RBI. (4)/ No error (5).
- 89.** Today there are very few (1)/ tigers left in India (2)/ and many NGOs are (3)/ working saving our national animal. (4)/ No error (5).
- 90.** People are willing to (1)/ pay higher taxes so that (2)/ the Government can build better roads (3)/ and provide safe drinking water. (4)/ No error (5).

Directions (91-100) : In the following passage there are blanks, each of which has been numbered. These numbers are printed below the passage and against each, five words are suggested, one of which fits the blank appropriately. Find out the appropriate word in each case.

Today the economies of African countries are growing at 5 per cent every year.

Rich countries usually help poorer ones (91) African countries through donations and aid. Their (92) are not always successful as loans are (93) not used for the projects for which they are (94). China, however, has found a different (95) to help Africa - by trading more with the (96). In 2009 China's trade with African countries was \$ 90 billion - (97) than the U.S., which was \$ 86 billion. (98) countries have now begun to notice the (99) available in Africa. China's attitude has (100) the way the world deals with poor countries.

"Trade not aid" is the new mantra of African nations.

- 91.** (1) belonging (2) similarly
(3) compared (4) with
(5) like

- 92.** (1) efforts
(2) practices
(3) challenges
(4) achievements
(5) attempt
- 93.** (1) given (2) approved
(3) regular (4) often
(5) being
- 94.** (1) grant (2) sanctioned
(3) took (4) hired
(5) apply
- 95.** (1) goal (2) fund
(3) way (4) skill
(5) dream
- 96.** (1) countries (2) others
(3) abroad (4) neighbours (5) poor
- 97.** (1) further (2) extra
(3) more (4) less
(5) high
- 98.** (1) Recently (2) Any
(3) Friendly (4) Many
(5) While
- 99.** (1) differences (2) supply
(3) quantity (4) people
(5) opportunities
- 100.** (1) substitute (2) changed
(3) exchanged (4) transform
(5) convert

NUMERICAL ABILITY

Directions (101-115) : What should come in place of the question mark (?) in the following questions?

- 101.** $16\% \text{ of } 450 + ? \% \text{ of } 250 = 4.8$
(1) 12 (2) 6
(3) 4 (4) 10
(5) None of these
- 102.** $19.5\% \text{ of } 524 = ?$
(1) 102.18 (2) 122.81
(3) 120.18 (4) 112.81
(5) None of these
- 103.** $\sqrt{?} - 11 = \sqrt{1521}$
(1) $\sqrt{2500}$
(2) $(28)^2$
(3) $\sqrt{28}$
(4) 50
(5) None of these
- 104.** $700 \div 70 + 0.5 = ?$
(1) 10 (2) 2.5
(3) 1.5 (4) 20
(5) None of these

- 105.** $12.8 \times 4.5 \times 2.2 = ?$
(1) 168.27 (2) 126.72
(3) 128.27 (4) 162.72
(5) None of these
- 106.** $55 \div 5.5 - 0.5 = ?$
(1) 11 (2) 10
(3) 8.5 (4) 10.5
(5) None of these
- 107.** $(5 \times 5 \times 5 \times 5 \times 5 \times 5)^4 \times (5 \times 5)^6 \div (5)^2 = (25)^?$
(1) 10 (2) 17
(3) 19 (4) 12
(5) None of these
- 108.** $8059 - 7263 = ? \times 40$
(1) 19.9 (2) 18.7
(3) 15.9 (4) 17.7
(5) None of these
- 109.** $4 \times ? = 4062 + 5$
(1) 203.1 (2) 213.1
(3) 205.1 (4) 215.1
(5) None of these
- 110.** $3.5 \times (80 \div 2.5) = ?$
(1) 122 (2) 111
(3) 222 (4) 212
(5) None of these
- 111.** $5\frac{1}{5} + 2\frac{3}{5} + 1\frac{2}{5} = ?$
(1) $7\frac{4}{5}$ (2) $8\frac{3}{5}$
(3) $6\frac{2}{5}$ (4) $9\frac{1}{5}$
(5) None of these
- 112.** $13\% \text{ of } 258 - ? = 10$
(1) 23.45 (2) 24.53
(3) 23.54 (4) 24.35
(5) None of these
- 113.** $\frac{4}{5} \times 2\frac{3}{4} + \frac{5}{8} = ?$
(1) $4\frac{12}{35}$ (2) $1\frac{12}{35}$
(3) $2\frac{11}{35}$ (4) $3\frac{13}{25}$
(5) None of these
- 114.** $623.15 - 218.82 - 321.43 = ?$
(1) 89.2 (2) 82.2
(3) 89.9 (4) 79.2
(5) None of these
- 115.** $5437 - 3153 + 2284 = ? \times 50$
(1) 96.66 (2) 91.36
(3) 96.13 (4) 93.16
(5) None of these

Directions (116-120) : What approximate value should come in place of the question mark (?) in the following questions? (Note : You are not expected to calculate the exact value.)

116. $16.003 \times 27.998 - 209.010 = ?$
 (1) 150 (2) 200
 (3) 75 (4) 240
 (5) 110

117. $840.0003 + 23.999 = ?$
 (1) 47 (2) 8
 (3) 35 (4) 18
 (5) 23

118. $6885.009 - 419.999 - 94.989 = ?$
 (1) 6650 (2) 6830
 (3) 6370 (4) 6200
 (5) 6450

119. $(6.5)^2 = ?$
 (1) 58 (2) 25
 (3) 43 (4) 35
 (5) 50

120. $11111 + 111 + 11 = ?$
 (1) 9 (2) 20
 (3) 5 (4) 2
 (5) 25

Directions (121-125) : What should come in place of the question mark (?) in the following number series?

121. 2 16 112 672 3360
 13440 ?
 (1) 3430 (2) 3340
 (3) 40320 (4) 43240
 (5) None of these

122. 4 9 19 ? 79 159 319
 (1) 59 (2) 39
 (3) 49 (4) 29
 (5) None of these

123. 4000 2000 1000 500 250
 125 ?
 (1) 80 (2) 65
 (3) 62.5 (4) 83.5
 (5) None of these

124. 588 563 540 519 ? 483
 468
 (1) 500 (2) 496
 (3) 494 (4) 490
 (5) None of these

125. 121 ? 81 64 49 36 25
 (1) 92 (2) 114
 (3) 98 (4) 100
 (5) None of these

126. The average weight of 15 girls was recorded as 54 kgs. If the weight of the teacher was added, the average increased by two kgs. What was the teacher's weight?
 (1) 75 kgs (2) 95 kgs
 (3) 78 kgs (4) 86 kgs
 (5) None of these

127. Find the average of the following set of scores:
 152, 635, 121, 423, 632, 744, 365, 253, 302
 (1) 403 (2) 396
 (3) 428 (4) 383
 (5) None of these

128. The sum of 15% of a positive number and 10% of the same number is 70. What is twice of that number?
 (1) 440 (2) 280
 (3) 560 (4) 140
 (5) None of these

129. Vikram scored 72 percent marks in five subjects together; viz ; Hindi, Science, Maths, English and Sanskrit together, wherein the maximum marks of each subject were 100. How many marks did Vikram score in Science if he scored 80 marks in Hindi, 70 marks in Sanskrit, 76 marks in Maths and 65 marks in English?
 (1) 72 (2) 69
 (3) 59 (4) 71
 (5) None of these

130. The respective ratio between Pooja's, Prarthana's and Falguni's monthly income is 53 : 70 : 57. If Prarthana's annual income is Rs. 4,20,000, what is the sum of Pooja's and Falguni's annual incomes? (In some cases monthly income and in some cases annual income is used.)
 (1) Rs. 5,92,500
 (2) Rs. 6,83,500
 (3) Rs. 6,60,000
 (4) Rs. 7,79,200
 (5) None of these

131. Manhar sold an item for Rs. 8,400 and incurred a loss of 25%. At what price should he have sold the item to have gained a profit of 40%?

- (1) Rs. 15,680
- (2) Rs. 16,220
- (3) Rs. 14,540
- (4) Cannot be determined
- (5) None of these

132. What will come in place of both the question marks (?) in the following question ?

$$\frac{(?)^{2.3}}{8} = \frac{2}{(?)^{1.7}}$$

- (1) 8 (2) 1
- (3) 4 (4) 16
- (5) 2

133. What would be the simple interest accrued in 4 years on a principal of Rs. 16,500 at the rate of 16 p.c.p.a. ?

- (1) Rs. 11,560
- (2) Rs. 10,250
- (3) Rs. 12,500
- (4) Rs. 9,980
- (5) None of these

134. A truck covers a distance of 360 kms in 8 hours. A car covers the same distance in 6 hours. What is the respective ratio between the speed of the truck and the car ?

- (1) 3 : 5 (2) 3 : 4
- (3) 1 : 2 (4) 4 : 5
- (5) None of these

135. In order to pass in an exam a student is required to get 975 marks out of the aggregate marks. Piya got 870 marks and was declared failed by 7 per cent. What are the maximum aggregate marks a student can get in the examination?

- (1) 1500
- (2) 1000
- (3) 1200
- (4) Cannot be determined
- (5) None of these

136. The average of four consecutive numbers A, B, C and D respectively is 56.5. What is the product of A and C?

- (1) 3363 (2) 3306
- (3) 3192 (4) 3080
- (5) None of these

137. Parag walks 226 metres every day. How many kilometres will he walk in five weeks ?

- (1) 6.57 (2) 7.91
(3) 8.23 (4) 9.41
(5) None of these
- 138.** At present Kavita is twice Sarita's age. Eight years hence, the respective ratio between Kavita's and Sarita's ages then will be 22 : 13. What is Kavita's present age ?
(1) 26 years (2) 18 years
(3) 42 years (4) 36 years
(5) None of these
- 139.** Out of the fractions $\frac{4}{9}$, $\frac{5}{11}$, $\frac{3}{7}$, $\frac{1}{4}$ and $\frac{2}{5}$ what is the difference between the second largest and second smallest fractions ?
(1) $\frac{2}{35}$ (2) $\frac{1}{45}$
(3) $\frac{3}{35}$ (4) $\frac{4}{45}$
(5) None of these
- 140.** What would be the area of a square whose diagonal measures 28 cms. ?
(1) 288 sq.cm.
(2) 514 sq.cm.
(3) 428 sq.cm.
(4) 392 sq.cm.
(5) None of these
- 141.** Riya, Manasvi and Pintu start running around a circular stadium and complete one round in 24 seconds, 6 seconds and 14 seconds respectively. In how much time will they meet again at the starting point?
(1) 1 min. 32 seconds
(2) 4 mins. 8 seconds
(3) 3 mins. 25 seconds
(4) 2 mins. 48 seconds
(5) None of these
- 142.** A 240 metre long train crosses a platform twice its length in 2 minutes. What is the speed of the train ?
(1) 8 m/s (2) 4 m/s
(3) 6 m/s
(4) Cannot be determined
(5) None of these
- 143.** On children's day sweets were to be equally distributed amongst 200 children, But on that particular day 40 children remained absent; hence each

- child got 2 sweets extra. How many sweets were distributed ?
(1) 3000 (2) 1500
(3) 2000 (4) 1600
(5) Cannot be determined
- 144.** The perimeter of a square is one-fourth the perimeter of a rectangle. If the perimeter of the square is 44 cms and the length of the rectangle is 51 cms, what is the difference between the breadth of the rectangle and the side of the square ?
(1) 30 cms (2) 18 cms
(3) 26 cms (4) 32 cms
(5) None of these
- 145.** What is the difference between the compound interest and simple interest accrued on an amount of Rs. 12,000 at the end of three years at the rate of 12% ?
(1) Rs. 539.136
(2) Rs. 602.242
(3) Rs. 495.248
(4) Rs. 488.322
(5) None of these
- 146.** The area of a rectangle is equal to the area of a circle with circumference equal to 220 metres. What is the length of the rectangle if its breadth is 50 metres ?
(1) 56 metres (2) 83 metres
(3) 77 metres (4) 69 metres
(5) None of these
- 147.** Prashant incurred a loss of 75 percent on selling an article for Rs. 6,800. What was the cost price of the article ?
(1) Rs. 27,700
(2) Rs. 25,600
(3) Rs. 21,250
(4) Rs. 29,000
(5) None of these
- 148.** 2 women and 10 children together take 8 days to complete a piece of work. How many days will 10 children alone take to complete the piece of work if 8 women alone can complete the piece of work in 6 days ?
(1) 15 (2) 12
(3) 10 (4) 24
(5) None of these

- 149.** In how many different ways can the letters of the word 'TROUBLE' be arranged ?
(1) 840 (2) 5040
(3) 1260 (4) 2520
(5) None of these
- 150.** A man riding a bicycle, completes one lap of a circular field along its circumference at the speed of 79.2 km/hr in 2 minutes 40 seconds. What is the area of the field?
(1) 985600 sq.metre
(2) 848500 sq.metre
(3) 795600 sq.metre
(4) Cannot be determined
(5) None of these

**GENERAL AWARENESS
(WITH SPECIAL REFERENCE
TO BANKING INDUSTRY)**

- 151.** Which of the following Awards is given for excellence in the field of Literature ?
(1) Dada Saheb Phalke Award
(2) Shanti Swarup Bhatnagar Award
(3) Padma Bhushan
(4) Nirja Bhanot Award
(5) Pulitzer Prize
- 152.** Ms. Hina Rabbani Khar of Pakistan and Mr. Yang Jiechi of China held a meeting recently in Beijing. Both of them are holding which of the following positions in their respective countries ?
(1) Prime Ministers
(2) Commerce Ministers
(3) Foreign Secretaries
(4) Foreign Ministers
(5) None of these
- 153.** International Cricket Matches are NOT played in—
(1) Mohali Stadium
(2) Wankhede Stadium
(3) Eden Gardens
(4) Green Park Stadium
(5) Mughal Garden
- 154.** Which term is used in Physics ?
(1) Credit
(2) Absolute Zero
(3) Rabies
(4) Thyroxin
(5) Liquidity

155. Which of the following terms is used in the game of Chess ?
 (1) Checkmate (2) Hoops
 (3) Stroke (4) Heave
 (5) Deuce
156. Bank branches which can undertake foreign exchange business directly are known as _____ in foreign exchange.
 (1) Authorized dealers
 (2) Foreign dealers
 (3) Overseas branches
 (4) Approved dealers
 (5) Exchange branches
157. Which of the following is the name of a Scientific Instrument ?
 (1) Plasma (2) Pascal
 (3) Radiation (4) Lactometer
 (5) Adrenal Cortex
158. India recently conducted joint naval exercise SLINEX II with which of the following countries ?
 (1) Sri Lanka (2) China
 (3) Japan
 (4) Bangladesh (5) Russia
159. Insurance cover for bank deposits in our country is provided by—
 (1) SBI
 (2) Government of India
 (3) GIC
 (4) LIC
 (5) DICGC
160. The Financial Literacy does **not** include which of the following ?
 (1) How to invest the funds
 (2) How to use the limited funds carefully
 (3) How to minimize the risks
 (4) How to reinvest the money earned
 (5) None of these
161. Which of the following countries is **NOT** a permanent member of the UN Security Council ?
 (1) China (2) India
 (3) Russia (4) France
 (5) U. S. A.
162. Many times we read a term DoT in various newspapers in connection of 2G Spectrum. What is its full form ?
 (1) Department of Transport
 (2) Department of Training
 (3) Directorate of Technology
 (4) Director of Tele services
 (5) Department of Telecom
163. As per the reports by the U.S. Agencies, which of the following countries was the largest purchaser of weapons in 2010 ?
 (1) China (2) India
 (3) Pakistan (4) Sri Lanka
 (5) Iran
164. Who among the following players got Honorary Rank of Lt. Colonel in the Territorial Army of India ?
 (1) Rahul Dravid
 (2) Sachin Tendulkar
 (3) Abhinav Bindra
 (4) Leander Paes
 (5) Gagan Narang
165. Which of the following Social Welfare Schemes is launched by the Government of India ?
 (1) Mid-day Meal scheme
 (2) Jeevan Asha
 (3) Jeevan Bharti
 (4) Look East Policy
 (5) Bharat Nirman
166. 'Dinar' is the currency of which of the following countries ?
 (1) Pakistan (2) Iran
 (3) Ghana
 (4) South Sudan (5) Libya
167. Who among the following also presides the sessions of the Rajya Sabha as its Chairman / person ?
 (1) President
 (2) Vice President
 (3) Prime Minister
 (4) Leader of Opposition in the Rajya Sabha
 (5) Minister of Home Affairs
168. Loans of very small amounts given to low income groups is called —
 (1) Cash credit
 (2) Micro credit
 (3) Simple overdraft
 (4) No frills loans
 (5) Rural credit
169. Which of the following awards was given to Mrs. Nilima Mishra recently ?
 (1) Pulitzer Prize
 (2) Ramon Magsaysay
 (3) Nobel Peace Prize
 (4) Golden Pen Award
 (5) Kalinga Award
170. Which of the following is the name of the currency of a country ?
 (1) Mexico (2) Peru
 (3) Syria (4) Zambia
 (5) Lira
171. Which of the following is **NOT** the name of a country ?
 (1) Congo (2) Ethiopia
 (3) Paris (4) Uganda
 (5) East Timor
172. Mr. Mahinda Rajapaksa is th
 (1) President of Sri Lanka
 (2) Prime Minister of Sri Lanka
 (3) President of Nepal
 (4) Prime Minister of Nepal
 (5) Foreign Minister of Fiji
173. When a banker talks about CDR, what is he talking about ?
 (1) Corporate Debt Restructuring
 (2) Corporate Debt Rollover
 (3) Company Debt Rollover
 (4) Corporate Deposit Restructuring
 (5) Company Deposit Restructuring
174. Expand the term ALM as used in Banking/Finance sector.
 (1) Asset Liability Management
 (2) Asset Liability Maturity
 (3) Asset Liability Mismatch
 (4) Asset Liability Manpower
 (5) Asset Liability Maintenance
175. Which of the following is the overall female literacy rate in India as per recent census? Approximately —
 (1) 50% (2) 60%
 (3) 65% (4) 70%
 (5) 73%

176. Cash Reserve Ratio (CRR) and Statutory Liquidity Ratio (SLR) are terms most closely related to which of the following industries/markets ?

- (1) Capital Market
- (2) Banking industry
- (3) Commodities market
- (4) Money Market
- (5) Mutual fund industry

177. What is the **maximum** period for which domestic term deposits are normally accepted by banks in our country ?

- (1) 3 years
- (2) 5 years
- (3) 7 years
- (4) 10 years
- (5) 12 years

178. If you wish to purchase some U.S. Dollars for your travel abroad, you should approach—

- (1) The Ministry of Finance
- (2) The U.S. Embassy
- (3) Any Bank Branch authorised to do such activity
- (4) The Reserve Bank of India only
- (5) External Affairs Ministry

179. Which of the following is a mineral ?

- (1) Isabgol (2) Camphor
- (3) Tobacco (4) Nickel
- (5) Jute

180. Which of the following countries is passing through a peculiar political impasse as there is no constitutional government in the country ?

- (1) Belgium (2) Sudan
- (3) Mongolia (4) Iraq
- (5) Greece

181. Which of the following books is written by Sunil Gavaskar ?

- (1) A Brief History of Time
- (2) A Sense of Time
- (3) Sunny Days
- (4) Half A Life
- (5) Great Expectations

182. What does the letter 'L' stand for in the term LAF commonly used in financial/economic news ?

- (1) Liquidity (2) Least
- (3) Liabilities (4) Long
- (5) Liquid

183. The Banking Ombudsman —

- (1) is in charge of bank loans for buses
- (2) fixes the rates of interest for loans
- (3) resolves complaints of customers
- (4) issues licences for new bank branches
- (5) is the head of all nationalised banks

184. Which of the following is not classified as a commercial bank ?

- (1) Public sector bank
- (2) Foreign bank
- (3) Private sector bank
- (4) Regional rural bank
- (5) Urban cooperative bank

185. Which of the following is **not** the name of a Banking Organisation ?

- (1) HDFC (2) IDBI
- (3) YES (4) SEBI
- (5) ICICI

186. Which of the following terms is used in Sports/Games ?

- (1) Equator
- (2) Clean-Bowled
- (3) Eroston
- (4) Neap Tide
- (5) Rotation

187. Money laundering means —

- (1) Hiding of income source mainly to avoid Income Tax
- (2) Money acquired through criminal source
- (3) Money acquired from undisclosed sources and deposited in foreign banks
- (4) Process of conversion of money obtained illegally to appear to have originated from legitimate sources
- (5) Money acquired from drug trafficking

188. Monetary Policy as an arm of the economic policy is administered by —

- (1) Government of India
- (2) Reserve Bank of India

(3) State Bank of India

(4) Governments of the respective states

(5) None of these

189. 'Thumba' India's Rocket Launching Centre is located in —

- (1) Kerala
- (2) Maharashtra
- (3) Tamil Nadu
- (4) Gujarat
- (5) Odisha

190. Which of the following is not a primary function of a Bank?

- (1) Granting Loans
- (2) Collecting Cheques/Drafts of customers
- (3) Facilitating import of goods
- (4) Issuing Bank Drafts
- (5) Selling Gold/Silver Coins

191. Mr. Tony Tan is the new President of—

- (1) China (2) Japan
- (3) Singapore (4) Hong Kong
- (5) North Korea

192. Which of the following is observed as 'World Food Day' ?

- (1) 6th November
- (2) 16th November
- (3) 6th October
- (4) 16th October
- (5) 17th January

193. Which of the following States is among the North East States of India?

- (1) Jammu & Kashmir
- (2) Punjab
- (3) Himachal Pradesh
- (4) Meghalaya
- (5) Rajasthan

194. Which of the following is an agricultural product?

- (1) Honey (2) Butter
- (3) Molasses (4) Ginger
- (5) Ethanol

195. Which of the following represents correct meaning of 'REPO RATE' ?

- (1) Rate on which RBI sells Government Securities to Banks
- (2) Rate for borrowing rupees by banks from RBI

- (3) Rate offered by banks to their prime customers
 (4) Rate applicable for grant of priority sector loans
 (5) None of these
- 196.** Reserves which can act as a liquidity buffer for commercial banks during crisis times are
 (1) CAR
 (2) CRR
 (3) CAR and CRR
 (4) CRR and SLR
 (5) SLR
- 197.** Savings bank accounts are opened by—
 (1) Trading entities, manufacturing entities and individuals for savings purposes
 (2) Traders and manufacturers for business purposes
 (3) Individuals for savings purposes
 (4) Limited companies and partnerships for savings purposes
 (5) Cooperative banks for savings
- 198.** Union Budget is always presented in the month of—
 (1) January (2) March
 (3) April (4) December
 (5) February
- 199.** A customer drawing a cheque on a bank has a right to —
 (1) Take back the cheque from the bank after it is paid
 (2) Take back the cheque from the bank after it is paid with the permission of RBI
 (3) Stop payment of the cheque before it is paid
 (4) Stop payment of the cheque after it is paid
 (5) Stop payment of the cheque before it is issued
- 200.** Who among the following is a well known politician and also a member of the Lok Sabha ?
 (1) Sri L. K. Advani
 (2) Sri Ranjan Mathai
 (3) Sri Mahesh Bhupathi.
 (4) Ms. Safna Nehwal
 (5) V. V. S. Laxman

COMPUTER KNOWLEDGE

- 201.** Assembly language is —
 (1) Machine Language
 (2) High-level programming language
 (3) A low-level programming language
 (4) Language for assembling computers
 (5) None of these
- 202.** Which of the following is **not** one of the syntax rules ?
 (1) The order in which you list the function's arguments
 (2) The precedence of the arguments
 (3) Whether or not the function has arguments
 (4) Properly spelling the function's name
 (5) None of these
- 203.** The binary system is a number system to the base —
 (1) 2 (2) 4
 (3) 8 (4) 10
 (5) 16
- 204.** Which of the following is **not** an example of hardware ?
 (1) Scanner (2) Printer
 (3) Monitor (4) Mouse
 (5) Interpreter
- 205.** Which contents are lost when the computer turns off ?
 (1) storage (2) input
 (3) output (4) memory
 (5) None of these
- 206.** Which of the following is hardware and not software?
 (1) Excel
 (2) Printer driver
 (3) Operating System
 (4) Power Point
 (5) CPU
- 207.** On a CD-RW you can —
 (1) read and write information
 (2) only read information
 (3) only write information
 (4) read, write and rewrite information
 (5) None of these
- 208.** To be able to "boot", the computer must have a(n)—
 (1) Compiler
 (2) Loader
 (3) Operating System
 (4) Assembler
 (5) None of these
- 209.** This is not a function category in Excel —
 (1) Logical (2) Data Series
 (3) Financial (4) Text
 (5) None of these
- 210.** In Excel, this is a prerecorded formula that provides a shortcut for complex calculations —
 (1) Value (2) Data Series
 (3) Function (4) Field
 (5) None of these
- 211.** The following computer's memory is characterised by low cost per bit stored —
 (1) Primary (2) Secondary
 (3) Hard Disk (4) All of these
 (5) None of these
- 212.** What happens when we try to delete the files on the floppy ?
 (1) The files get moved to the Recycle Bin
 (2) Files on a floppy cannot be deleted
 (3) The files get deleted and can be restored again from Recycle Bin
 (4) The files get deleted and cannot be restored again
 (5) The file gets copied on the Hard disk
- 213.** In word, replace option is available on —
 (1) File Menu
 (2) View Menu
 (3) Edit Menu
 (4) Format Menu
 (5) None of these
- 214.** In word, you can change Page Margins by—
 (1) Dragging the scroll box on the scroll bars
 (2) Deleting the margin boundaries on the Ruler
 (3) Dragging the margin boundaries on the Ruler
 (4) Clicking the right mouse button on the Ruler
 (5) None of these
- 215.** What type of keys are 'ctrl' and 'shift' ?
 (1) adjustment (2) function
 (3) modifier
 (4) alphanumeric
 (5) None of these

- 216.** A word gets selected by clicking it to select a word, in Word—
 (1) once (2) twice
 (3) three times (4) four times
 (5) None of these
- 217.** To reverse the effect of your last action in word,—
 (1) Use the cut command
 (2) Use the Undo command
 (3) Press the delete key
 (4) Use the Redo command
 (5) None of these
- 218.** Your position in the text is shown by a—
 (1) Blinker (2) Cursor
 (3) Causer (4) Pointer
 (5) None of these
- 219.** The time for the actual data transfer after receiving the request for data from secondary storage is referred to as the disk's —
 (1) transfer time
 (2) movement time
 (3) access time
 (4) data input time
 (5) None of these
- 220.** Which of the following categories would include a keyboard?
 (1) Printing Device
 (2) Output Device
 (3) Pointing Device
 (4) Storage Device
 (5) Input Device
- 221.** Using output devices one can—
 (1) input data
 (2) store data
 (3) scan data
 (4) view or print data
 (5) None of these
- 222.** Why is the Caps Lock key referred to as a toggle key?
 (1) Because its function goes back and forth every time it is pressed
 (2) Because it cannot be used for entering numbers
 (3) Because it cannot be used to delete
 (4) Because it cannot be used to insert
 (5) None of these
- 223.** Using Print Preview is useful when you want to—
 (1) Colour the document
 (2) Save the document
 (3) Delete the document
 (4) Copy the document
 (5) View how the document will appear when printed
- 224.** Which of the following can input graphical images and pictures for a computer?
 (1) Plotter (2) Scanner
 (3) Mouse (4) Printer
 (5) Keyboard
- 225.** When a chart is placed on this, it is much larger and there is no other data on it—
 (1) Chart sheet
 (2) Exclusive sheet
 (3) Primary sheet
 (4) Reference sheet
 (5) None of these
- 226.** The process of trading goods over the Internet is known as —
 (1) e-selling-n-buying
 (2) e-trading
 (3) e-finance
 (4) e-salesmanship
 (5) e-commerce
- 227.** Information that comes from an external source and fed into computer software is called —
 (1) Output (2) Input
 (3) Throughput (4) Reports
 (5) None of these
- 228.** The main system board of a computer is called the —
 (1) integrated circuit
 (2) motherboard
 (3) processor
 (4) microchip
 (5) None of these
- 229.** This dialog box specifies or modifies the worksheet cell range containing data to be charted —
 (1) Chart Location
 (2) Chart Style
 (3) Chart Options
 (4) Chart Source Data
 (5) None of these
- 230.** If you change Windows 98 to Windows XP, you are actually performing —
 (1) upstart (2) upgrade
 (3) update (4) patch
 (5) None of these
- 231.** The operating system that is self-contained in a device and resident in the ROM is—
 (1) Batch Operating System
 (2) Real-time Operating System
 (3) Embedded Operating System
 (4) Multi-Processor Operating System
 (5) None of these
- 232.** To make a copy of the current document to disk—
 (1) Use the "save" command
 (2) This cannot be done
 (3) Use the "duplicate" command
 (4) Copy the document
 (5) Use the "save as" command
- 233.** _____ is the process of carrying out commands.
 (1) Fetching (2) Storing
 (3) Decoding (4) Executing
 (5) None of these
- 234.** In the formula, $= B1/B2 + B3$, which of the following is the correct precedence?
 (1) Addition higher precedence than division
 (2) Equal precedence among the two operators; proceed right to left
 (3) Equal precedence among the two operators; proceed left to right
 (4) Division higher precedence than addition
 (5) None of these
- 235.** POST stands for —
 (1) Power on Self Test
 (2) Program on Self Test
 (3) Power on System Test
 (4) Program on System Test
 (5) Power Off System Test
- 236.** In word, you can use Styles to—
 (1) Make copies of documents
 (2) Save changes to documents
 (3) Delete text in documents
 (4) Format your documents
 (5) None of these
- 237.** How many megabytes make a gigabyte?

- (1) 1024 (2) 128
(3) 256 (4) 512
(5) 64
- 238.** An educational institution would generally have the following in its domain name —
(1) .org (2) .edu
(3) .inst (4) .com
(5) .sch
- 239.** Which of the following is not a term pertaining to the Internet?
(1) Keyboard (2) Link
(3) Browser
(4) Search Engine
(5) Hyperlink
- 240.** Which of the following is used by the browser to connect to the location of the Internet resources?
(1) Linkers (2) Protocol
(3) Cable (4) URL
(5) None of these
- 241.** Excel would evaluate the formula, = 20 * 10 / 4 * 8, and return the answer—
(1) 400 (2) 40
(3) 6.25 (4) 232
(5) 600
- 242.** Which of the following is the fastest type of computer?
(1) Laptop
(2) Notebook
(3) Personal computer
(4) Workstation
(5) Supercomputer
- 243.** Linux is a type of _____ software.
(1) Shareware
(2) Commercial
(3) Proprietary
(4) Open Source
(5) Hidden type
- 244.** In a web site, the 'home' page refers to —
(1) the best page
(2) the last page
(3) the first page
(4) the most recent page
(5) the oldest page
- 245.** Which key is used to delete one character to the left of the current position of the cursor?
(1) Backspace (2) Delete
(3) Insert (4) Esc
(5) Ctrl
- 246.** Which part of the computer helps to store information?

- (1) Monitor (2) Keyboard
(3) Disk drive (4) Printer
(5) Plotter
- 247.** To restart the computer the following combination of keys is used—
(1) Del + Ctrl
(2) Backspace + Ctrl
(3) Esc + Ctrl
(4) Insert + Esc
(5) Ctrl + Alt + Del
- 248.** ASCII stands for—
(1) American Special Computer for Information Interaction
(2) American Standard Computer for Information Interchange
(3) American Special Code for Information Interchange
(4) American Special Computer for Information Interchange
(5) American Standard Code for Information Interchange
- 249.** In word, when you indent a paragraph, you —
(1) push the text in with respect to the margin
(2) change the margins on the page
(3) move the text up by one line
(4) move the text down by one line
(5) None of these
- 250.** Which keys enable the input of numbers quickly?
(1) ctrl, shift and alt
(2) function keys
(3) the numeric keypad
(4) arrow keys
(5) None of these

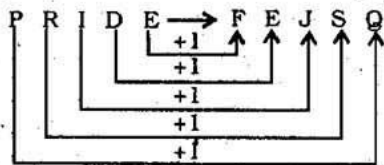
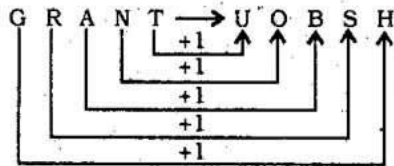
ANSWERS

1. (3)	2. (4)	3. (2)	4. (2)
5. (5)	6. (4)	7. (2)	8. (3)
9. (1)	10. (5)	11. (3)	12. (5)
13. (1)	14. (1)	15. (4)	16. (1)
17. (5)	18. (4)	19. (1)	20. (3)
21. (4)	22. (5)	23. (4)	24. (2)
25. (5)	26. (3)	27. (3)	28. (2)
29. (4)	30. (1)	31. (1)	32. (4)
33. (2)	34. (3)	35. (1)	36. (4)
37. (4)	38. (1)	39. (1)	40. (2)
41. (4)	42. (1)	43. (5)	44. (1)

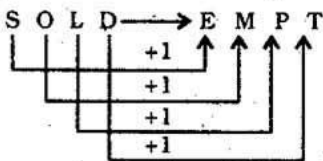
45. (2)	46. (5)	47. (4)	48. (3)
49. (3)	50. (1)	51. (2)	52. (2)
53. (5)	54. (1)	55. (4)	56. (3)
57. (5)	58. (4)	59. (3)	60. (5)
61. (1)	62. (5)	63. (2)	64. (1)
65. (4)	66. (4)	67. (5)	68. (3)
69. (1)	70. (4)	71. (3)	72. (1)
73. (3)	74. (2)	75. (1)	76. (3)
77. (5)	78. (1)	79. (2)	80. (4)
81. (2)	82. (2)	83. (1)	84. (3)
85. (4)	86. (3)	87. (3)	88. (1)
89. (4)	90. (1)	91. (5)	92. (1)
93. (4)	94. (2)	95. (3)	96. (1)
97. (3)	98. (4)	99. (5)	100. (2)
101. (2)	102. (1)	103. (5)	104. (4)
105. (2)	106. (5)	107. (2)	108. (1)
109. (1)	110. (5)	111. (4)	112. (3)
113. (4)	114. (5)	115. (2)	116. (4)
117. (3)	118. (3)	119. (3)	120. (1)
121. (3)	122. (2)	123. (3)	124. (1)
125. (4)	126. (4)	127. (1)	128. (3)
129. (2)	130. (3)	131. (1)	132. (5)
133. (5)	134. (2)	135. (1)	136. (5)
137. (2)	138. (4)	139. (5)	140. (4)
141. (4)	142. (3)	143. (4)	144. (3)
145. (1)	146. (3)	147. (5)	148. (2)
149. (2)	150. (1)	151. (5)	152. (4)
153. (5)	154. (2)	155. (1)	156. (1)
157. (4)	158. (1)	159. (5)	160. (5)
161. (2)	162. (5)	163. (2)	164. (3)
165. (1)	166. (5)	167. (2)	168. (2)
169. (2)	170. (5)	171. (3)	172. (1)
173. (1)	174. (1)	175. (3)	176. (2)
177. (4)	178. (3)	179. (4)	180. (1)
181. (3)	182. (1)	183. (3)	184. (5)
185. (4)	186. (2)	187. (4)	188. (2)
189. (1)	190. (3)	191. (3)	192. (4)
193. (4)	194. (4)	195. (2)	196. (4)
197. (3)	198. (5)	199. (3)	200. (1)
201. (3)	202. (2)	203. (1)	204. (5)
205. (4)	206. (5)	207. (4)	208. (3)
209. (2)	210. (3)	211. (2)	212. (4)
213. (3)	214. (3)	215. (3)	216. (2)
217. (2)	218. (1)	219. (3)	220. (5)
221. (4)	222. (1)	223. (5)	224. (2)
225. (1)	226. (5)	227. (2)	228. (2)
229. (4)	230. (2)	231. (3)	232. (5)
233. (4)	234. (4)	235. (1)	236. (4)
237. (1)	238. (2)	239. (1)	240. (4)
241. (1)	242. (5)	243. (1)	244. (3)
245. (1)	246. (3)	247. (5)	248. (5)
249. (1)	250. (3)		

EXPLANATIONS

1. (3)



Similarly,



2. (4) Except 27, all others are Prime Numbers.

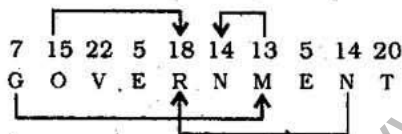
3. (2)

1	2	3	4	5	6	7
S	T	U	M	B	L	E

Meaningful Word \Rightarrow MELT

4. (2) $B \xrightarrow{+5} G \xrightarrow{+5} L \xrightarrow{+5} Q \xrightarrow{+5} V$
 $E \xrightarrow{+5} J \xrightarrow{+5} O \xrightarrow{+5} T \xrightarrow{+5} Y$

5. (5)



(6 - 10) :

$\$ \Rightarrow \geq$	$@ \Rightarrow \leq$	$\delta \Rightarrow >$
$\# \Rightarrow <$	$\% \Rightarrow =$	

6. (4) $F @ N \Rightarrow F \leq N$
 $N \delta R \Rightarrow N > R$
 $H @ R \Rightarrow H \leq R$

Therefore, $F \leq N > R \geq H$

Conclusions

I. $H \delta N \Rightarrow H > N$: Not True
 II. $F \# R \Rightarrow F < R$: Not True

7. (2) $M \# T \Rightarrow M < T$
 $T @ K \Rightarrow T \leq K$
 $K \$ N \Rightarrow K \geq N$

Therefore, $M < T \leq K \geq N$

Conclusions :

I. $M \# N \Rightarrow M < N$: Not True
 II. $K \delta M \Rightarrow K > M$: True

8. (3) $T \% H \Rightarrow T = H$
 $H \$ W \Rightarrow H \geq W$

Therefore, $T = H \geq W$

Conclusions :

I. $W \# T \Rightarrow W < T$: Not True
 II. $W \% T \Rightarrow W = T$: Not True
 T is either greater than or equal to W. Therefore, either Conclusion I or II is true.

9. (1) $N \delta K \Rightarrow N > K$

$K \# D \Rightarrow K < D$

$D \% M \Rightarrow D = M$

Therefore, $N > K < D = M$

Conclusions :

I. $M \delta K \Rightarrow M > K$: True
 II. $D \delta N \Rightarrow D > N$: Not True

10. (5) $J \$ B \Rightarrow J \geq B$

$B \% R \Rightarrow B = R$

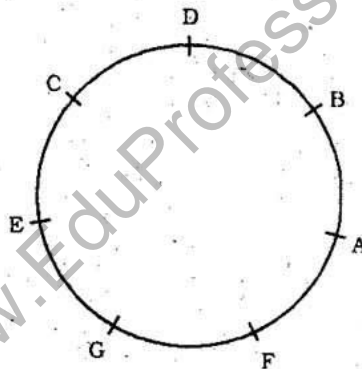
$R \delta F \Rightarrow R > F$

Therefore, $J \geq B = R > F$

Conclusions :

I. $F \# B \Rightarrow F < B$: True
 II. $R @ J \Rightarrow R \leq J$: True

(11 - 15) :



11. (3) E is to the immediate right of C.

12. (5) F is sitting between A and G.

13. (1) B is the immediate left of D.

14. (1) B is second to the left of C.

15. (4) E is second to the right of D.

(26 - 30) : After careful analysis of the given input and various steps of rearrangement it is evident that words and numbers are being rearranged alternately. The words get rearranged in alphabetical order while the numbers get rearranged in descending order.

26. (3) Input : won 13 now 25 72 please go 47
 Step I : go won 13 now 25 72 please 47
 Step II : go 72 won 13 now 25 please 47
 Step III : go 72 now won 13 25 please 47
 Step IV : go 72 now 47 won 13 25 please
 Step V : go 72 now 47 please won 13 25
 Step VI : go 72 now 47 please 25 won 13

16. (1)

E	R	W	H	K	A
↓	↓	↓	↓	↓	↓
2	@	©	6	#	1

17. (5)

M	P	E	K	D	U
↓	↓	↓	↓	↓	↓
8	4	2	#	5	\$

Condition (i) is applicable.

18. (4)

T	M	E	I	U	F
↓	↓	↓	↓	↓	↓
9	\$	2	%	8	9

Condition (ii) is applicable.

19. (1)

J	T	A	E	R	I
↓	↓	↓	↓	↓	↓
%	7	1	2	@	3

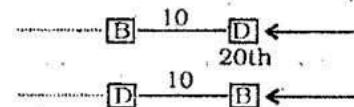
Condition (i) is applicable.

20. (3)

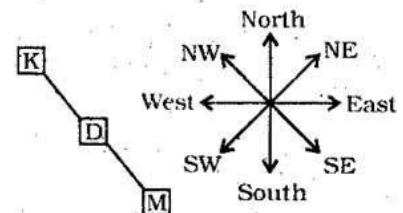
U	K	T	M	I	H
↓	↓	↓	↓	↓	↓
*	#	7	\$	%	*

Condition (iii) is applicable.

21. (4) From both the statements



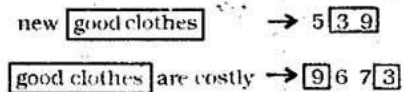
22. (5) From both the statements



23. (4) From both the statements K, M and T are siblings of P.

24. (2) From statement II Arun left for London on Friday - 2 = Wednesday

25. (5) From both the statements



27. (3) Step III : car 81 desk 15 42 39 tall more
 Step IV : car 81 desk 42 15 39 tall more
 Step V : car 81 desk 42 more 15 39 tall
 Step VI : car 81 desk 42 more 39 15 tall
28. (2) Step II : bell 53 town hall near 27 43 12
 Step III : bell 53 hall town near 27 43 12
 Step IV : bell 53 hall 43 town near 27 12
 Step V : bell 53 hall 43 near town 27 12
 Step VI : bell 53 hall 43 near 27 town 12
29. (4) Cannot be determined
30. (1) Input : paper dry 37 23 height call 62 51
 Step I : call paper dry 37 23 height 62 51
 Step II : call 62 paper dry 37 23 height 51
 Step III : call 62 dry paper 37 23 height 51
 Step IV : call 62 dry 51 paper 37 23 height
 Step V : call 62 dry 51 height paper 37 23
 Step VI : call 62 dry 51 height 37 paper 23

(31-35) :

Person	Bus	Favourite Cuisine
P	A	Kashmiri Cuisine
Q	B	Punjabi Cuisine
R	C	Rajasthani Cuisine
S	A	Bengali Cuisine
T	B	Udipi
V	A	Gujarati Cuisine
W	C	Maharashtrian Cuisine

31. (1) The Combination A-V-Gujarati cuisine is correct.
32. (4) R's favourite cuisine is Rajasthani.
33. (2) S's favourite cuisine is Bengali.
34. (3) Q's favourite cuisine is Punjab.
35. (1) In Bus A three of them are travelling.

(36-40) :

- (i) All metals are plastics → Universal Affirmative (A-type).
 (ii) Some vacations are trips → Particular Affirmative (I-type).
 (iii) No holiday is vacations → Universal Negative (E-type).
 (iv) Some holidays are not vacations → Particular Negative (O-type).
36. (4) No holiday is vacations.

↔

Some vacations are trips.

$E + I \Rightarrow O_{1/2}$ -type of Conclusion
 "Some trips are not holidays."

37. (4) Some birds are kites.

↔

No kite is an aeroplane.

$I + E \Rightarrow O$ -type of Conclusion
 "Some birds are not aeroplane".

38. (1) All metals are plastics.

↔

All plastics are fibres.

$A + A \Rightarrow A$ -type of Conclusion
 "All metals are fibres".
 Conclusion I is Converse of it.

39. (1) All roads are streets.

↔

No street is a highway.

$A + E \Rightarrow E$ -type of Conclusion
 "No road is a highway".
 Conclusion I is Converse of it.

40. (2) Some animals are plants.

↔

All plants are rocks.

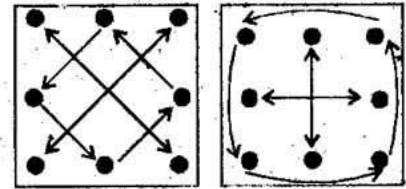
$I + A \Rightarrow I$ -type of Conclusion
 "Some animals are rocks".
 Conclusion II is Converse of it.

41. (4) In the subsequent figures respectively two and four curves are inverted in a set order alternately.

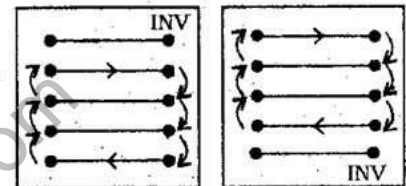
42. (1) In the subsequent figures respectively four, one, three, one, four curves are added.

43. (5) The following changes occur in the subsequent figures :

- (1) to (2) (2) to (3)
 (3) to (4) (4) to (5)
 (5) to (6)



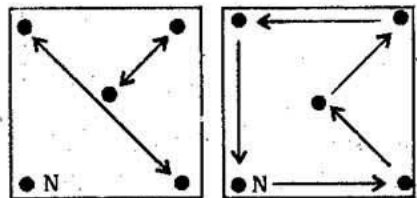
44. (1) The following changes occur in the subsequent figures :
- (1) to (2) (2) to (3)
 (3) to (4) (4) to (5)
 (5) to (6)



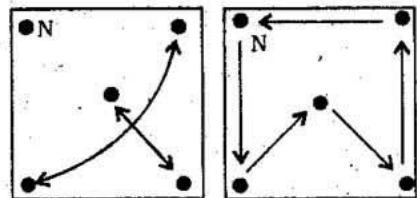
INV = INVERTED

45. (2) In the subsequent figures the plane of designs rotates through 45° and 90° alternately and three and two designs are inverted alternately.

46. (5) The following changes occur in the subsequent figures :
- (1) to (2) (2) to (3)



- (3) to (4) (4) to (5)



- (5) to (6)

