

# COMMON ADMISSION TEST

## SECTION-I

**Directions:** In each of the following questions, four sentences are given between the sentences numbered 1 and 6. You are required to arrange the four sentences so that all six together make a logical paragraph.

1.
  1. Why are horses the same?
  - A. It may be old and lame, and in time it will die.
  - B. A particular horse 'flows', naturally.
  - C. But there is something all horses have in common.
  - D. You probably don't think they are at all.
6. But the 'form' of the horse is eternal and immutable.
  - a. DCAB
  - b. CABD
  - c. CBDA
  - d. DCBA
2.
  1. Buddhism is a way to salvation. A. But Buddhism is more severely analytical.
  - B. In the Christian tradition there is also a concern for the fate of human society conceived as a whole, rather than merely as a sum or network of individuals.
  - C. Salvation is a property, or achievement, of individuals.
  - D. Not only does it dissolve society into individuals; the individual in turn is dissolved into component parts and instants, a stream of events.
6. In modern terminology, Buddhist doctrine is reductionist.
  - a. BCAD
  - b. ADBC
  - c. CBAD
  - d. CDAB
3.
  1. Matrilineal systems of land inheritance advantaged women in many respects, especially in granting them economic and social security.
  - A. Women, in particular, were profoundly affected by these changes.
  - B. The large joint family estates came to be partitioned; there was an increasing penetration of market forces and patriarchal ideologies spread in influence.
  - C. These systems, however, did not remain fixed over time.
  - D. Interventions by the colonial and post-colonial states, and the processes of social change which these set in motion, eroded customary practices.
6. At the same time, their customary exclusion from major authority in public bodies meant that they were unlikely to be the ones directing the changes.
  - a. BDCA
  - b. CDBA
  - c. CDAB
  - d. CADB
4.
  1. Liz Taylor isn't just unlucky in love.
  - A. She, and husband Larry Fortensky, will have to pay the tab - \$432, 600 in court costs.
  - B. The duo claimed that a 1993 story about a property dispute damaged their reputations.
  - C. Taylor has lost a defamation suit against the National Enquirer.
  - D. She is unlucky in law too.
6. Alas, all levels of the California court system disagreed.
  - a. CDAB
  - b. DCAB
  - c. DABC
  - d. CDBA
5.
  1. Since its birth, rock has produced a long string of guitar heroes.
  - A. It is a list that would begin with Chuck Berry, continue on through Hendrix, Page and Clapton.
  - B. These are musicians celebrated for their sheer instrumental talent, and their flair for expansive, showy and sometimes self-indulgent solos.
  - C. It would also include players of more recent vintage, like Van Halen and Living Colour's Vernon Reid.
  - D. But with the advent of alternative rock and grunge, guitar heroism became uncool.
6. Guitarists like Peter Buck and Kurt Cobain shy away from exhibitionism.
  - a. ACBD
  - b. ABCD
  - c. BCAD
  - d. BADC
6.
  1. Hiss was serving as head of the Endowment on Aug 3, 1948, when Whittaker Chambers reluctantly appeared before the House Un-American Activities Committee.

- A. Chambers, a portly ruffled man with a melodramatic style, had been a Communist courier but had broken with the party in 1938.
- B. When Nixon arranged a meeting of the two men in New York, Chambers repeated his charges and Hiss his denials.
- C. Summoned as a witness, Hiss denied he had ever been a Communist or had known Chambers.
- D. He told the Committee that among the members of a secret Communist cell in Washington during the '30s was Hiss.
6. Then, bizarrely, Hiss asked Chambers to open his mouth.
- CBAD
  - ADBC
  - ADCB
  - ACDB
- 7.
- For many scientists, oceans are the cradle of life.
  - But all over the world, chemical products and nuclear waste continue to be dumped into them.
  - Coral reefs, which are known as the most beautiful places of the submarine world, are fast disappearing.
  - The result is that many species of fish die because of this pollution.
  - Of course man is the main cause of these problems.
  - Man has long since ruined the places he goes to — continents and oceans alike.
- ACBD
  - BACD
  - ABDC
  - BCAD
- 8.
- Am I one of the people who are worried that Bill Clinton's second term might be destroyed by a constitutional crisis?
  - On the other hand, ordinary citizens have put the campaign behind them.
  - In other words, what worries me is that Bill Clinton could exhibit a version of what George Bush used to refer to as Big Mo.
  - That is, he might have so much campaign momentum that he may not be able to stop campaigning.
  - Well, it's true that I've been wondering whether a President could be impeached or refusing to stop talking about the bridge we need to build to the 21 century.
  - They prefer now to watch their favourite soaps and acts on TV rather than senators.
- DABC
  - ABDC
  - BACD
  - CBDA
- 9.
- Historically, stained glass was almost entirely reserved for ecclesiastical spaces.
  - By all counts, he has accomplished that mission with unmistakable style.
  - "It is my mission to bring it kicking and screaming out of that milieu," says Clarke.
  - The first was the jewel-like windows he designed for a Cistercian Church in Switzerland.
  - Two recent projects show his genius in the separate worlds of the sacred and the mundane.
  - The other was a spectacular, huge skylight in a shopping complex in Brazil.
- CBAD
  - BADC
  - ABDC
  - DBAC
- 10.
- So how big is the potential market?
  - But they end up spending thousands more each year on hardware upgrades and software overhauls.
  - Analysts say the new machines will appeal primarily to corporate users.
  - An individual buyer can pick up a desktop computer for less than \$2000 in America.
  - For them, the NC's best drawing card is its promise of much lower maintenance costs.
  - NC's, which automatically load the latest version of whatever software they need, could put an end to all that.
- BCAD
  - DABC
  - BDCA
  - DCAB
- Directions for Q. 11 to 15:** Find the odd word out from each of the following sets of four words.
11. Find the odd word out from each of the following sets of four words.
- Break
  - Hiatus
  - Pause
  - End
12. Find the odd word out from each of the following sets of four words.
- Stigmatise
  - Vilify
  - Consecrate
  - Scandalise
13. Find the odd word out from each of the following sets of four words.
- Satire

- b. Wag  
c. Jester  
d. Wit
14. Find the odd word out from each of the following sets of four words.  
a. Impetuosity  
b. Equanimity  
c. Zealousness  
d. Effervescence
15. Find the odd word out from each of the following sets of four words.  
a. Taxi  
b. Cruise  
c. Amble  
d. Cab

**Directions Q. 16 to 23:** Mark as the answer the pair of words which have a relationship between them most similar to the relationship between the capitalised pair.

16. VOICE: VENTRILOQUIST  
a. movement : dancer  
b. eyesight : student  
c. skills : surgeon  
d. hair : beautician
17. UNITY : DIVERSITY  
a. Single : Multiple  
b. One : Many  
c. Homogenous : Heterogeneous  
d. Singular : Plural
18. DOUBT : FAITH  
a. Atheist : Religious  
b. Sceptic : Pious  
c. Cerebral : Dull  
d. Impolite : Courteous
19. DEMAND : SUPPLY  
a. Labour : Capital  
b. Require : Offer  
c. Give : Take  
d. Accept : Reject
20. BIGOT : PREJUDICE  
a. racist : apartheid  
b. anarchist : disorder  
c. mob : fury  
d. fundamentalist : violence
21. MALAPROPISM : WORDS  
a. anachronism: time  
b. ellipsis : sentence  
c. jinjanthropism : apes  
d. catechism : religion
22. ANTERIOR : POSTERIOR  
a. in : out  
b. top : bottom  
c. head : tail  
d. front : rear
23. EXAGGERATION : HYPERBOLE  
a. falsehood : mendacity  
b. comparison : analogy  
c. perspicuity : synonymous
- d. syntax : grammar
- Directions Q. 24 to 29:** In each of the following questions, a part of a sentence is left blank. You are to choose from among the four options given below each question, the one which would best fill the blanks.
24. \_\_\_\_\_ the more they remain the same.  
a. The more the merrier  
b. The less the dynamism  
c. The more things change  
d. The more pronounced the transformation
25. The stock-market is probably \_\_\_\_\_. And the way the market has been plunging says a lot about investor confidence.  
a. the best barometer to assess the sentiment of the public  
b. an ideal indication of the health of public sentiment  
c. the least imperfect mechanism for judging the quantity of the sentiment of the public  
d. the best indicator of public sentiment
26. I am an entertainer. \_\_\_\_\_, I have to keep smiling because in my heart laughter and sorrow has an affinity.  
a. Even if I have tears in me  
b. Even though I am depressed inside  
c. While entertaining people  
d. In the entertainment business
27. Political power is just as permanent as today's newspaper. Ten years down the line, \_\_\_\_\_ who the most powerful man in any state was today.  
a. who cares  
b. nobody will remember what was written in today's newspaper or  
c. few will know, or care about  
d. when a lot of water will have passed under the bridge, who will care
28. When we call others dogmatic, what we really object to is \_\_\_\_\_.  
a. their giving the dog a bad name  
b. their holding dogmas that are different from our own.  
c. the extremism that goes along with it.  
d. the subversion of whatever they actually believe in concomitantly.
29. Although it has been more than 50 years since Satyajit Ray made Pather Panchali, refuse to go away from the mind.  
a. the haunting images  
b. its haunting images  
c. its haunted images  
d. the haunt of its images.

**Directions Q. 30 to 36 :** In each of the following questions a part of a paragraph or sentence has been underlined. From the choices given, you are required

to choose the one which would best replace the underlined part.

30. Dieters who regain weight usually think flattening their tummies means giving up all their favourite fattening foods. in fact most diet winners still eat doughnuts and pizza — but they do so with equanimity.
- but they do so with equanimity.
  - but they do so soberly.
  - but in moderation.
  - but they do so with a sense of judiciousness.
31. Whatever be the experience of the other funds, the Unit Trust of India's decision will put pressure on them to convert their closed schemes into open ones. Investor must evaluate future offerings from the other funds on that basis.
- ought to carefully scan potential offerings on that logic.
  - must evaluate future offerings from the other funds on that basis.
  - should hereafter gauge such offerings keeping such a rationale in mind.
  - reckon with such offerings upon such expectations.
32. How many times have I asked myself: when is the world going to start to make sense? There is a monster out there, and it is rushing towards me over the uneven ground of consciousness.
- There is a monster out there
  - It is as if the world is on my shoulders
  - The answer is out there somewhere
  - There is a sea of sensibility in me.
33. Contemplating whether to exist with an insatiable romantic temperament, he was the author and largely the subject of a number of memorable novels.
- Contemplating whether to exist
  - Combining realistic detail
  - Miscegenating a brilliant mind
  - Aware that he had been born
34. In a penetrating study, CBS-TV focuses on those people without hope, whose bodies are cared for by welfare aid, but whose spirit is often neglected by a disinterested society.
- whose bodies are cared for by welfare aid
  - who do not have enough to eat
  - whose hopelessness may be alleviated
  - who may be physically satiated
35. The Rumanians may be restive under Soviet direction — but they are tied to Moscow by ideological and military links.
- they are tied to Moscow by ideological and military links.
  - they are preparing for a great revolution.

- secretly they rather enjoy the prestige of being protected by the mighty Soviets.
- there is nothing they can do about it.

**Directions Q 36 to 42:** Given below are six statements followed by sets of three. You are to mark that option in which the statements are most logically related.

36. Given below are six statements followed by sets of three. You are to mark that option in which the statements are most logically related.
- An ostrich lays eggs.
  - All birds lay eggs.
  - Some birds can fly
  - An ostrich cannot fly.
  - An ostrich is a bird.
  - An ostrich cannot swim.
- 251
  - 125
  - 453
  - 532
37. Given below are six statements followed by sets of three. You are to mark that option in which the statements are most logically related.
- All prime ministers were politicians.
  - All members of parliament were politicians.
  - All prime ministers were members of parliament.
  - Pandit Nehru was a politician.
  - Pandit Nehru was the prime minister.
  - Pandit Nehru was a member of parliament.
- 145
  - 236
  - 532
  - 635
38. Given below are six statements followed by sets of three. You are to mark that option in which the statements are most logically related.
- Some pins are made of tin.
  - All tin is made of copper.
  - All copper is used for pins.
  - Some tin is copper.
  - Some pins are used for tin.
  - Some copper is used for tin.
- 123
  - 356
  - 345
  - 125
39. Given below are six statements followed by sets of three. You are to mark that option in which the statements are most logically related.
- All bricks are tricks.
  - Some tricks are shrieks.
  - Some that are shrieks are bricks.

4. Some tricks are not bricks.  
5. All tricks are shrieks.  
6. No tricks are shrieks.  
a. 513  
b. 234  
c. 123  
d. 543
40. Given below are six statements followed by sets of three. You are to mark that option in which the statements are most logically related.
1. Some sand is band
  2. All sandal is sand.
  3. All band is sandal
  4. No sand is sandal.
  5. No band is sand.
  6. Some band is sandal.
- a. 231  
b. 165  
c. 453  
d. 354
41. Given below are six statements followed by sets of three. You are to mark that option in which the statements are most logically related.
1. Now wife is a life.
  2. All life is strife.
  3. Some wife is strife.
  4. All that is wife is life.
  5. All wife is strife.
  6. No wife is strife.
- a. 256  
b. 632  
c. 126  
d. 245
42. Given below are six statements followed by sets of three. You are to mark that option in which the statements are most logically related.
1. Poor girls want to marry rich boys.
  2. Rich girls want to marry rich boys.
  3. Poor girls want to marry rich girls.
  4. Rich boys want to marry rich girls.
  5. Poor girls want to marry rich girls.
  6. Rich boys want to marry poor girls.
- a. 145  
b. 123  
c. 234  
d. 456
43. Given below are six statements followed by sets of three. You are to mark that option in which the statements are most logically related.
1. Six is five.
  2. Five is not four.
  3. Some five is ten.
  4. Some six is twelve.
  5. Some twelve is five.
  6. Some ten is four.
- a. 145  
b. 123  
c. 156  
d. 543
44. Given below are six statements followed by sets of three. You are to mark that option in which the statements are most logically related.
1. Some crows are flies.
  2. Some flies are mosquitoes.
  3. All mosquitoes are flies.
  4. Some owls are flies.
  5. All owls are mosquitoes.
  6. Some mosquitoes are not owls.
- a. 123  
b. 356  
c. 145  
d. 542
- Directions Q. 45 to 50:** Arrange the four sentences in order so that they make a logically coherent paragraph.
45. Arrange the four sentences in order so that they make a logically coherent paragraph.
- A. Widely publicised tables of income levels of all countries indicate that when incomes are higher, the greater is the contribution made by the manufacturing industry.
  - B. Countries which have little or no industry are almost invariably poor.
  - C. The lesson is clear: to overcome poverty and backwardness, a country must industrialise.
  - D. Industrialisation is seen as the key to growth and a prerequisite for development
- a. CBAD  
b. DCBA  
c. DABC  
d. CABD
46. Arrange the four sentences in order so that they make a logically coherent paragraph.
- A. A wife may not be sure that what her husband is saying means "the end".
  - B. She has found that people's voices often get higher or shakier when they lie, and they are more likely to stumble over words.
  - C. According to DePaulo, changes in voice can be significant.
  - D. She should listen closely, not only to what he says, but also to how he says it.
- a. ADCB  
b. ACDB  
c. ADBC  
d. ABCD
47. Arrange the four sentences in order so that they make a logically coherent paragraph.
- A. He pulled popcorn dipped in ketchup out of her mouth with a pair of pliers.



- B. Soon Steven was making horror pictures, using his sisters as victims.
- C. A few years later Steven borrowed his dad's eight- millimetre movie camera to film The Last Train Wreck using his own electric train set.
- D. In one he played a dentist, with his sister Ann as the patient
- CBAD
  - DACB
  - DABC
  - CBDA
48. Arrange the four sentences in order so that they make a logically coherent paragraph.
- A. In bulk processing, a set of standard prices typically emerges.
- B. Competing therefore means keeping products flowing, trying to improve quality, getting costs down.
- C. Let us look at the two cultures of competition.
- D. Production tends to be repetitive — much the same from day to day or even from year to year.
- CDBA
  - ABDC
  - CADB
  - DCBA
49. Arrange the four sentences in order so that they make a logically coherent paragraph.
- A. A moment later my prospective fiancée reappeared and shoved a ticket to Jiuquan through the hatch.
- B. The queue gazed at me dumbstruck, then broke into a little ripple of applause.
- C. The station master and clerk retreated into the back room,
- D. I lifted it like a trophy.
- CABD
  - ACDB
  - ACBD
  - CADB
50. Arrange the four sentences in order so that they make a logically coherent paragraph.
- A. Something magical is happening to our planet.
- B. Some are calling it a paradigm shift.
- C. It's getting smaller.
- D. Others call it business transformation.
- ABDC
  - ACDB
  - ABCD
  - ACBD

**PASSAGE -1**

Emile Durkheim, the first person to be formally recognised as a sociologist and the most scientific of the pioneers, conducted a study that stands as a research model for sociologists today. His investigation of suicide was, in fact, the first sociological study to use statistics. In *Suicide* (1964, originally published in 1897) Durkheim documented his contention that some aspects of human behaviour — even something as allegedly individualistic as suicide — can be explained without reference to individuals.

Like all of Durkheim's work, suicide must be viewed within the context of his concern for social integration. Durkheim wanted to see if suicide rates within a social entity (for example, a group, organisation, or society) are related to the degree to which individuals are socially involved (integrated and regulated). Durkheim described three types of suicide: egoistic, anomic, and altruistic. Egoistic suicide is promoted when individuals do not have sufficient social ties. Since single (never married) adults, for example, are not heavily involved with family life, they are more likely to commit suicide. On the other hand, altruistic suicide is more likely to occur when social integration is too strong. The ritual suicide of Hindu widows on their husbands' funeral pyres is one example. Military personnel, trained to lay down their lives for their country, provide another illustration.

Durkheim's third type of suicide — anomic suicide — increases when the social regulation of individuals is disrupted. For example, suicide rates increase during economic depression. People who suddenly find themselves without a job or without hope of finding one are more prone to kill themselves. Suicide may also increase during periods of prosperity. People may loosen their social ties by taking new jobs, moving to new communities, or finding new mates.

Using data from the government population reports of several countries (much of it from the French Government Statistical Officer), Durkheim found strong support for his line of reasoning. Suicide rates were higher among single than married people, among military personnel than civilians, among divorced than married people, and among people involved in nation-wide economic crises.

It is important to realise that Durkheim's primary interest was not in the empirical (observable) indicators he used such as suicide rates among military personnel, married people, and so forth. Rather, Durkheim used the following indicators to support several of his contentions: (1) Social behaviour can be explained by social rather than psychological factors; (2) Suicide is affected by the degree of integration and regulation within social entities; and (3) Since society can be studied scientifically, sociology is worthy of recognition in the academic world. Durkheim was successful on all three counts.

**SECTION-II**

**Directions: Read the passages and answer the questions based on them.**

51. In his study of suicide Durkheim's main purpose was
- to document that suicide can be explained without reference to the individual.
  - to provide an explanation of the variation in the rate of suicide across societies.
  - to categorise various types of suicide.
  - to document that social behaviour can be explained by social rather than psychological factors.
52. According to Durkheim, suicide rates within a social entity can be explained in terms of
- absence of social ties
  - disruption of social regulation
  - nature of social integration
  - all of the above
53. Since single adults are not heavily involved with family life they are more likely to commit suicide which Durkheim categorised as
- anomic suicide
  - altruistic suicide
  - egoistic suicide
  - 2 and 3
54. Higher suicide rate during rapid progress in a society is a manifestation of
- altruistic suicide
  - anomic suicide
  - egoistic suicide
  - none of the above
55. Ritual suicide of Hindu widows on their husband's funeral pyres was
- a manifestation of strong social integration
  - an example of brutality against women
  - an example of anomic suicide
  - an example of egoistic suicide
56. Increase in the suicide rate during economic depression is an example of
- altruistic suicide
  - anomie suicide
  - egoistic suicide
  - both 1 and 3
57. According to Durkheim altruistic suicide is more likely among
- military personnel than among civilians
  - single people than among married people
  - divorcees than among married people
  - people involved in nation-wide economic crisis
58. To support his contentions, Durkheim relied on the following indicators
- Social behaviour is explicable predominantly through social factors
  - Suicide is contingent upon the degree of social regulation and interaction
  - Recognising sociology is to acknowledge that society is susceptible to scientific investigation.
  - All of the above
59. Basing himself on his own indicators, Durkheim was
- Right on some counts not others
  - Vindicated on all counts
  - Wrong but did not realise that he was right
  - Substantially correct but formally wrong

**PASSAGE -2**

Among the considerable number of men dedicated to the task of keeping Louis XIV entertained, several met bizarre ends. In 1671 at Chantilly, the great chef Vatel, after providing the king and some 2,000 courtiers with three superb meals on the first day of their visit, killed himself on the next, when a consignment of fish he had ordered failed to appear (it turned up shortly thereafter) Jean-Baptiste Lully, in charge of music for all the royal festivities, managed to stab himself in the foot with his conductor's baton while directing a performance of one of his own works in 1687; he died soon afterwards when gangrene set in.

Nothing, however, quite equals the death of Jean-Baptiste Poquelin, the self-styled sieur de Moliere, a man established by 1672 as actor/manager and chief play-wright of la troupe du roi, performing at the Palais Royal in Paris and much in demand at court. "But might it not be a bit dangerous to counterfeit death?" Moliere, as Argan, the hypochondriac protagonist of his last comedy, "Le Malade imaginaire", enquired, when about to do just that, during the play's fourth performance on February 17<sup>th</sup>, 1673. "No, no," the maid Toinette reassured him, "what danger could there be?" But Moliere did, in fact, die: not actually on stage though he finished Argan's part with considerable difficulty — but an hour or two later at home. Predictably, a strictly Catholic France where actors were excommunicated and refused burial in consecrated ground (though churchmen patronised the theatre and wrote plays themselves) the usual dour moral lessons were drawn.

The stage chair in which Moliere as Argan was stricken in earnest, not in jest, can still be seen on permanent display in the upper lobby of the Comedie Francaise — the theatre which, in effect, he founded. It is, apart from the plays themselves and their prefaces, almost the only tangible relic of a man much written about by friends and enemies during and immediately after his lifetime, who nevertheless remains in many ways mysterious, despite endlessly proliferating scholarly and critical research. Virginia Scott, author of the latest attempt at a biography, is well aware of the difficulties. No one can disentangle legend from fact, fiction from truth — not even in the brief life attached to the collected edition of Moliere's works produced by his associate La Grange in 1682, or in the 1705 biography by Grimmarest. Moliere himself left no letters, no diaries, no memoirs. None of the various houses in which he is said to have lived remains, nor do any of his personal possessions. Not only do his contemporaries provide ambiguous and conflicting

reports, but the basic facts are wanting. Shakespeareans may complain about a certain paucity of information, but at least they know where their man was buried and whom he married. Molieristes do not.

Ms Scott is engagingly candid about her biographical method. "My agenda is to express those intersections between myself and the past that I experience imaginatively... I order what I know or believe I know so as to create characters — whom I choose to call Moliere and Madeleine — who could have made with some degree of probability the choices I believe the real Moliere and Madeleine to have made." So she is free to decide that Armande Bejart, the teenager Moliere married in 1662, was indeed the daughter of his former mistress Madeleine Bejart by the Comte de Modene, rather than her youngest sister. (But not, as some of his enemies suggested, also Moliere's own daughter.) As to where and when the respectable Jean-Baptiste Poquelin first met the distinctly bohemian Madeleine, and how he was drawn away from the solid family upholstery business into the theatre, she does not pretend to offer more than speculation. Like everyone who writes about Moliere, Ms Scott combs the plays themselves for clues about his private life and comes up with suggestions that may or may not be right. Most innovative of all, perhaps, is her hypothesis that Moliere's relationship with his young protégé Baron was homoerotic — though even that was hinted at by the more malicious of his contemporaries.

The last biography of Moliere published in English, John Palmer's "Moliere" (1930; reprinted in 1970), is still worth reading. To compare it, however, with Ms Scott's is to realise how enormously attitudes have changed during the intervening years. Nervous even about Moliere's illicit relationship with Madeleine, Palmer could not bring himself to say more than that "probably" they had an affair. Over Baron's possibly sexual appeal to Moliere he maintained total silence. Also very much of its period was his slight regard for that improvised Italian theatre which provided Moliere with many dramatic types, and his contempt for lavish baroque spectacle of the kind that Louis XIV loved and on which Moliere "wasted" his talents. The ballet de cour and comedies-ballets are now regarded with far more interest and respect than was the case in 1930 (as indeed are the court masques that Ben Jonson and Inigo Jones created for James I). Both the delicious "Le Bourgeois Gentilhomme" and "Le Malade Imaginaire" are, after all, comedies-ballets — a category that a more flexible 21<sup>st</sup> century idea of theatre can once again accommodate.

Ms Scott provides valuable correctives here. The strength of her book (as might be expected from the author of "The Commedia dell' Arte in Paris", 1990) lies less in its portrait of Moliere himself than in the densely researched and persuasive background against which she is able to situate him. This is made up of families and places (she is particularly good on

the 13 years during which Moliere and his troupe wandered the French provinces before returning to Paris), while also including portraits of his enemies, as well as eminent friends such as Boileau, La Fontaine and Racine. She does not offer much in the way of commentary on the plays themselves. What she does do is arrestingly illuminate the complex world of theatre and court, both in Paris and elsewhere, that finally constitutes almost all that can really be known of Moliere's life.

60. It can be inferred from the passage that Moliere was:
1. a play wright
  2. an actor
  3. a novelist
  4. a poet
- a. 1,2 and 3
  - b. 2, 3 and 4
  - c. 1 and 2
  - d. 2 and 3
61. What is the main difficulty in knowing about the life of Moliere according to the author?
- a. there is no tangible relic of the man
  - b. it is difficult to disentangle legend from fact in what is known about Moliere's life
  - c. there are conflicting reports by his contemporaries, and even the basic facts are wanting
  - d. all of these
62. "But might it not be a bit dangerous to counterfeit death?" What can we infer from this line about Moliere's death?
- a. that he died a natural death.
  - b. that his death was a spectacular one
  - c. that he had a premonition of his death
  - d. that he was stricken during a performance and died thereafter.
63. "The usual dour moral lessons were drawn." Which of the following would be the most likely dour lesson drawn upon Moliere's death?
- a. actors were immoral and deserved to die unnatural deaths
  - b. it served the actor right because he joked about death
  - c. one should stay away from the performing arts
  - d. none of these
64. We can say that Ms Scott's biographical method is:
- a. deeply researched and accurate
  - b. imaginative and not accurate.
  - c. based on the most probable outcome as imagined by her
  - d. a flight of fancy that does not deserve critical acclaim
65. Which attitudes is the author referring to when he compares two biographies of Moliere?



- a. sexual and moral attitudes
  - b. attitudes towards playwrights and actors
  - c. Catholic attitudes
  - d. all of these
66. Suggest a suitable title for the passage:
- a. Mysterious Moliere
  - b. Recreating Moliere
  - c. A Spectacular Death
  - d. Moliere and Madeleine

### **PASSAGE -3**

That the doctrines connected with the name of Darwin are altering our principles has become a sort of commonplace thing to say. And moral principles are said to share in this general transformation. Now, to pass by other subjects I do not see why Darwinism need change our ultimate moral ideas. It will not modify our conception of the end, either for the community or the individual, unless we have been holding views which long before Darwin were out of date. As to the principles of ethics I perceive, in short, no sign of revolution. Darwinism has indeed helped many to truer conception of the end, but I cannot admit that it has either originated or modified that conception.

And yet in ethics Darwinism after all many perhaps be revolutionary. It may lead not to another view about the end, but to a different way of regarding the relative importance of the means. For in the ordinary moral creed those means seem estimated on no rational principle. Our creed appears rather to be an irrational mixture of jarring elements. We have the moral code of Christianity, accepted in part; rejected practically by all save a few fanatics. But we do not realise who in its very principle the Christian ideals is false. And when we reject this code for another and in part a sounder morality, we are in the same condition of blindness and of practical confusion. It is here that Darwinism, with all the tendencies we may group under that name, seems destined to intervene, It will make itself felt, I believe, more and more effectual. It may force on us in some points a correction of our moral views, and a return to a non-Christian and perhaps a Hellenic ideal. I propose to illustrate here these general statements by some remarks on Punishment.

Darwinism, I have said, has not even modified our ideas of the Chief Good. We may take that as the welfare of the community realised in its members. There is, of course, a question as to the meaning to be given to welfare. We may identify that with mere pleasure, or may rather view both as inseparable aspects of perfection and individuality. And the extent and nature of the community would once more be a subject for some discussion. But we are forced to enter on these controversies here. We may leave welfare undefined, and for present purpose need not distinguish the community from the state. The welfare of this whole exists, of course, nowhere outside the

individuals, and the individuals again have rights and duties only as members in the whole. This is the revived Hellenism — or we may call it the organic view of thing — urged by German idealism early in the present century.

67. According to the author, the doctrines of Darwin:
- a. have changed our physical and moral principles.
  - b. have to be re-evaluated to correct the faults endemic in them
  - c. do not change our moral ideas
  - d. are actually new versions of old moral rules
68. What is most probably the author's opinion of the existing moral principles of the people?
- a. He thinks they have to be revamped in the light of Darwinism.
  - b. He thinks that they are okay as they are and do not need any major change.
  - c. He thinks that it may be a good idea to have a modicum of the immoral Darwinism in us.
  - d. Cannot be determined from the passage.
69. According to the author, the moral code of Christianity:
- a. is not followed by most people.
  - b. is in danger due to opposition to Darwinism.
  - c. is followed by a vast majority of people.
  - d. is totally ignored by all true Christians.
70. It is implied in the passage that:
- a. a Hellenic ideal is not a proper substitute of the Christian ideal.
  - b. what mankind needs is a Hellenic ideal rather than a Christian one.
  - c. Darwinism is more Christian than Hellenic.
  - d. fanatics do not understand what Darwinism really is
71. What, according to the passage, is the Chief Good?
- a. Being good and kind to all fellow human beings.
  - b. The greatest good of the greatest number.
  - c. The welfare of the community realised in its members.
  - d. Cannot be determined from the passage.

### **PASSAGE -4**

Management education gained new academic stature within US Universities and greater respect from outside during the 1960's and 1970's. Some observers attributed the competitive superiority of US corporations to the quality of business education. In 1978, a management professor, Herbert A. Simon of Carnegie Mellon University, won the Nobel Prize in economics for his work in decision theory. And the

popularity of business education continued to grow; since 1960, the number of master's degrees awarded annually has grown from under 5000 to over 50,000 in the mid 1980's and the MBA has become known as 'the passport to the good life'.

By the 1980s, however, US business schools faced critics who charged that learning had little relevance to real business problems. Some went so far as to blame business schools for the decline in US competitiveness. Amidst the criticism, for distinct arguments may be discerned. The first is that business schools must be either unnecessary or deleterious because Japan does so well without them. Underlying this argument is the idea that management ability cannot be taught; one is either born with it or much acquire it over years of practical experience. A second argument is that business schools are overly academic and theoretical. They teach quantitative models that have little application to real world problems. Third, they give inadequate attention to shop-floor issues, to production processes and to management resources. Finally, it is argued that they encourage undesirable attitudes in students, such as placing value on the short term and bottom line' targets, while neglecting longer term developmental criteria. In summary, some business executives complain that MBAs are incapable of handling day to day operational decisions, unable to communicate and to motivate people, and unwilling to accept responsibility for following through on implementation plans. We shall analyse these criticisms after having reviewed experiences in other countries.

In contrast to the expansion and development of business education in the United States and more recently in Europe, Japanese business schools graduate no more than two hundred MBAs each year. The Keio Business School (KBS) was the only two year masters programme. The absence of business school in Japan would appear in contradiction with the high priority placed upon learning by its Confucian culture. Confucian colleges taught administrative skills as early as 1630 and Japan wholeheartedly accepted Western learning following the Meiji restoration of 1868 when hundreds of students were despatched to universities in US, Germany, England and France to learn the secrets of western technology and modernisation. Moreover, the Japanese educational system is highly developed and intensely competitive and can be credited for raising the literary and mathematical abilities of the Japanese to the highest level in the world.

Until recently, Japanese corporations have not been interested in using either local or foreign business schools for the development of their future executives. Their in-company, training programme have sought the socialisation of newcomers, the younger the better. The training is highly specific and those who receive it have neither the capacity nor the incentive to quit. The prevailing belief, says Imai, management should be born out of experience and many years of effort and

not learnt from educational institutions'. A 1960 survey of Japanese senior executives confirmed that a majority (54%) believed that managerial capabilities can be attained only on the job and not in universities.

However, this view seems to be changing: the same survey revealed that even as early as 1960, 37% of senior executives felt that the universities should teach integrated professional management. In the 1980s, a combination of increased competitive pressures and greater multi-nationalisation of Japanese business are making it difficult for many companies to rely solely upon internally trained managers. This has led to a rapid growth of local business programmes and a greater use of American MBA programmes. In 1982-83, the Japanese comprised the largest single group of foreign students at Wharton. where they not only learnt the latest techniques of financial analysis, but also developed world-wide contracts through their classmates and became Americanised, something highly useful in future negotiations. The Japanese, then do not, do without business school as is sometimes contended. But the process of selecting and orienting new graduates even MBAs into corporations is radically different than in the US. Rather than being placed in highly paying staff positions, new Japanese recruits are assigned responsibility for operational and even menial tasks. Success is based upon Japan's system of highly competitive recruitment and intensive in-company management development, which in turn are grounded in its tradition of universal and rigorous academic education, lifelong employment and strong group identification.

The harmony among these traditional elements has made Japanese industry highly productive and the given corporate leadership a long term view. It is true that this has been achieved without much attention to university business education, but extraordinary attention has been devoted to the development of managerial skills both within the company and through participation in programmes sponsored by the Productivity Centre and other similar organisations.

72. The 1960's and 1970's can best be described as a period,
  - a. When quality business education contributed to the superiority of US corporations.
  - b. When the number of MBAs rose from under 5,000 to over 50,000.
  - c. When management education gained new academic stature and greater respect.
  - d. When the MBA became more disreputable.
73. According to the passage
  - a. learning, which was useful in the 1960's and 1970's became irrelevant in the 1980's.
  - b. management education faced criticism in the 1980's.

- c. business schools are insensitive to the needs of industry.  
 d. by the 1980's business schools contributed to the decline in US competitiveness.
74. The growth in popularity of business schools among students was most probably due to  
 a. Herbert A. Simon, a management professor winning the Nobel Prize in economics.  
 b. the gain in academic stature.  
 c. the large number of MBA degrees awarded.  
 d. a perception that it was a 'passport to the good life'
75. A criticism that management education did not face was that  
 a. it imparted poor quantitative skills to MBAs.  
 b. it was unnecessary and deleterious.  
 c. it was irrevocably irrelevant.  
 d. it inculcated undesirable attitudes in students.
76. US business schools faced criticism in the 1980's because  
 a. of the decline in Japanese competitiveness  
 b. many critics felt that the learning had little relevance to business problems  
 c. people realised that management ability cannot be taught  
 d. MBAs were unwilling to accept responsibility for implementation on the shop floor
77. The absence of business schools in Japan  
 a. is due to the prevalent belief that management ability can only be acquired over years of practical experience  
 b. was due to the high priority placed on learning as opposed to doing in Confucian culture  
 c. is hard to explain for the proponents of business education  
 d. contributed a great deal to their success in international trade and business
78. The Japanese were initially able to do without business schools as a result of:  
 a. their highly developed and intensively competitive education system  
 b. despatching hundreds of students to learn the secrets of Western technology and modernisation  
 c. their highly specific in-company training programmes  
 d. prevailing beliefs regarding education institutions
79. The Japanese modified their views on management education because of  
 a. greater exposure to US MBA programmes  
 b. the need to develop world-wide contacts and became Americanised

- c. the outstanding success of business schools in the US during the 1960's and 1970's.  
 d. a combination of increased competitive pressures and greater multi-nationalisation of Japanese business

### PASSAGE -5

For researchers interested in the working of the subatomic and astrophysical realms, soup is on the menu. This is no ordinary soup, however, but a seething mass of elementary particles called quarks and gluons. The whole universe is thought to have consisted of just such a soup of few millionths of second after the Big Bang that began everything. And today the soup is being sought by two groups of physicists, one of lot of which is attempting to recreate it on earth using particle colliders, while the other lot searches for it In the sky, buried in the cores of dead stars.

Both groups have reported progress, though neither has yet produced conclusive results. But definite identification of "quark matter" would have profound implications. For particle physicists, the search for such a soup provides a way of testing one of their most fundamental theories: that of quantum chromodynamics (QCD). Among astrophysicists, meanwhile, some theorists have suggested that in certain circumstances quark matter could form a stable sort of super-dense material which if its existence could be proven would literally be the strangest stuff in the universe.

The recipe for making your own quark soup from scratch goes something like this. First, take some atoms of lead. Unreel them and discard the electrons, leaving just the nuclei. Put the nuclei into a particle accelerator, spin up to almost the speed of light and heat by slamming into a target made of more lead atoms, so that they reach a temperature 100,000 times hotter than the centre of the sun. At this temperature, something rather unusual is thought to happen.

Atom nuclei are bundles of protons and neutrons which, along with electrons, are the basis of normal, modern matter. But protons and neutrons are themselves made up of more fundamental particles called quarks, bound together by 'glue' particles called (for obvious reasons) gluons. Quarks come in several varieties: a proton, for instance, consists of two "up" quarks and a "down" quark, while a neutron consists of two downs and an up. The theory of QCD makes predictions about the way quarks and gluons should behave.

Normally, the laws of subatomic physics dictate that individual quarks are never seen in the wild; they always travel around in twos or threes. At sufficiently high temperatures, however — such as those reached in a high-energy particle collider protons and neutrons are thought to disintegrate into a soup, or

plasma, of individual quarks and gluons, before cooling and recombining into ordinary matter.

That is what QCD predicts. So, since 1994, an international team of researchers at CERN, the European laboratory for particle physics in Geneva, has been smashing lead nuclei together and then combing through the hail of subatomic particles that results from these collisions to look for evidence of quark-gluon plasma.

This is hard, because physicists can directly detect only particles that escape from the fireball and reach their instruments — and these particles are likely to have undergone several transmutations in their short lives. But by working backwards it is possible to discern the processes that led to the formation of the observed particles. For example, interactions between free quarks and gluons, as opposed to ordinary matter, should cause more of some types of exotic particle to be produced, and fewer of other kinds. Careful analysis of the ratios of particles churned out in thousands of collisions should thus determine whether a quarkgluon plasma was made or not.

CERN researchers have announced that analysis of the results of seven separate types of collision collectively provided evidence of the creation, for the first time, of just such a soup. For a fraction of a second they had, in other words, recreated the conditions that prevailed just after the Big Bang. Admittedly, this declaration of victory came with several provisos. Ulrich Heinz, a theoretical physicist at CERN, says that more experiments at higher energies will be needed to verify the result. But, having cranked up their accelerators to achieve the most energetic collisions possible the CERN team can go no further. So the announcement also signalled a passing of the torch to the new Relativistic Heavy Ion Collider at the Brookhaven National Laboratory on Long Island, New York, which will start an experimental programme at higher energies later.

80. According to the passage, what is said to have began the universe?
- Quarks and gluons
  - the theory of QCD
  - The Big Bang
  - None of these
81. Who are the particle physicists?
- a group of physicists who are carrying out their research on how the earth began.
  - a group of physicist that is using particle colliders
  - a group following the fundamental theory of QCD
  - all of the above.
82. What happens when protons and neutrons are subjected extremely high temperatures?
- it leads to the formation of atomic nucleus
  - they disintegrate into a plasma of individual quarks and gluons.

- they recombine into ordinary matter.
  - Both (b) and (c)
83. What is the ideal method to determine whether quarkgluon plasma was made or not?
- careful analyse is of the ratios of particles churned out
  - smashing load nuclei together and then combing through the hail of subatomic particles.
  - working backwards
  - none of the above
84. Why is it said that “the announcement also signalled a passing of the torch to the new Relativistic Heavy Ion Collider at the Brookhaven National Laboratory”?
- due to paucity of funds
  - the CERN team has reached the end of its capabilities
  - in order to verify the results at high energy levels
  - the CERN equipment has reached the end of its capabilities
85. Which of the following statements about quarks, is/are true?
- Quarks come in various varieties
  - Quarks always travel in groups
  - A neutron consists of three quarks
  - all of the above
86. From the above passage we can conclude that:
- It is still not certain whiter ‘quark matter’ exists or not
  - Quarks were solely responsible for the creation of universe
  - though it is certain that quark matter exists, it’s behaviour is still only dimly understood.
  - None of these
87. The word ‘seething’ as used in the passage, can mean the following:
- saturated in liquid
  - extremely cold
  - crowded
  - Boiling and bubbling
- 3 and 4
  - 1, 2, and 4
  - 2, 3 and 4
  - 2 and 4
88. An idea title for the above passage would be:
- The Quark Matter
  - The Big Bang and After
  - Strange Soup
  - none of these
89. The tone of the passage is:
- Light and informative
  - amusing but trite
  - Perceptive and well researched
  - Ironic



**PASSAGE 6**

Shams and delusions are esteemed for soundest truths, while reality is fabulous, if men would steadily observe realities only, and not allow themselves to be deluded, life, to compare it with such things as we know, would be like a fairy tale and the Arabian Nights' entertainments. If we respect only what is inevitable and has right to be, music and poetry would resound along the streets. When we are unhurried and wise, we perceive that only great and worthy things have any permanent and absolute existence that petty fears and petty pleasures are but the shadow of the reality. This is always exhilarating and sublime. By closing the eyes and slumbering, and consenting to be deceived by shows, men establish and confirm their daily life of routine and habit everywhere, which still is built on purely illusory foundations. Children, who play life, discern its true law and relations more clearly than men, who fail to live it worthily but who think that they are wiser by experience; that is, by failure.

I have read in a Hindu book that there was a king's son who, being expelled in infancy from his native city, was brought up by a forester, and, growing up to maturity in that state, imagined himself to belong to the barbarous race with which he lived. One of his father's ministers having discovered him, revealed to him what he was, and the misconception of his character was removed and he knew himself to be a prince, "So soul," continues the Hindu philosopher, "from the circumstances in which it is placed, mistakes its own character, until the truth is revealed to it by some holy teacher and then it knows itself to be Brahma."

If a man should give us an account of the realities he beheld, we should not recognise the place in his description. Look at a meeting-house, or a court-house, or a jail, or a shop, or a dwelling house, and say what that thing really is before a true gaze, and they would all go to pieces in your account of them. Men esteem truth remote, in the outskirts of the system, behind the farthest star, before Adam and after the last man. In eternity there is indeed something true and sublime but all these times and places and occasions are now and here. God Himself culminates in the present moment, and will never be more divine in the lapse of all ages. And we are enabled to apprehend at all what is sublime and noble only by the perpetual instilling and drenching of the reality that surrounds us. The universe constantly and obediently answers to our conceptions; whether we travel fast or slow, the track is laid for us. Let us spend our lives in conceiving, then. The poet or the artist never yet had so fair and noble a design but some of his posterity at least could accomplish it.

90. The writer's attitude toward the arts is one of
- Indifference
  - Suspicion
  - Admiration

d. Repulsion

91. The author believes that children are often more acute than adults in their appreciation of life's relations because
- Children know more than adults.
  - Children can use their experience better.
  - Children's eyes are unclouded by failure.
  - Experience is the best teacher.
92. The passage implies that human beings:
- Cannot distinguish the true from the untrue.
  - Are immoral if they are lazy.
  - Should be bold and fearless.
  - Believe in fairy tales.
93. The word 'fabulous' in the first line, in the context of the passage, means
- Wonderful
  - Delicious
  - Birdlike
  - Illusion
94. The author is primarily concerned with urging the reader to
- Mediate on the meaninglessness of the present.
  - Appraise the present for its true value.
  - Look to the future for enlightenment.
  - Spend more time in the leisure activities.

**PASSAGE-7**

NOBODY disputes that wage inequality is on the rise in most rich countries, and especially in America. Exactly how much inequality has gone up remains a matter of dispute, but the trend is clear. And it is not just a matter of incomes soaring at the very top and/or plunging (relatively speaking) at the very bottom: the distribution of incomes is being stretched throughout its span. Why?

A plausible one-word answer, von might think, is "computers". Information technology replaces the unskilled; less demand means lower wages: At the same time computers complement the skills of more sophisticated types — the "knowledge workers" who represent, according to pundits such as Robert Reich, the future of work. This complementarily raises individuals' productivity and thereby increases their earning power. The prosperous get more so, the unskilled get dumped.

Superficially appealing, the knowledge-worker part of this story has always seemed, on reflection, half-baked. Its advocates concentrate on the wage-dispersing role of PCs. But the trend of rising inequality dates back much further than the 1980s, when the PC caught on. Also, research (as well as casual observation) shows that office PCs are chiefly used for word processing and cranking out spreadsheets. It is hard to believe that top managers' wages are rising relative to the mean because bosses are doing their own typing. And the typical spreadsheet cruncher is not a corporate top-dog but a



middle-level clerk or accountant whose wage is failing to keep pace with his boss's.

Statistics do show that wages are correlated with use of PCs. But the question is whether PCs have raised workers' wages or were merely put on the desks of workers who were well-paid to begin with. Among evidence for the latter view is one study that showed pay to be as strongly correlated with the use of pencils as with the use of PCs. As yet, nobody has argued that pencils have shifted the income distribution.

A new study by Timothy Bresnahan of Stanford University reflects on these and other findings and offers a quite different view. Yes, the paper argues, IT has had, and will continue to have, profound effects on jobs and wages—but not through the largely bogus knowledge-worker channel.

Rather than emphasising PCs as a way to improve the productivity of individual workers, Mr Bresnahan sees computing as an agent of revolution in whole organisations. Beginning not with PCs but much earlier, computers have indeed been used as substitutes for low-skill clerical workers. The pattern began in the 1950s, when hugely expensive mainframe computers were first used to save correspondingly huge sums in information-intensive functions in the financial-services industry, then in accounting, payroll and inventory-control tasks in other big organisations.

It is unsurprising that this kind of innovation, which spread in scale and scope as the cost of computing came down, should have lowered the wages of the unskilled. But how did it raise the wages of people higher up the income range? Mr Bresnahan's answer is that it raised the demand for two kinds of worker—neither of them knowledge workers in the Reichian sense.

First, as back-office jobs (susceptible to automation) have declined in importance, front-office jobs (which require certain bundles of skills, especially social skills) have increased. In other words, there is less mindless paper-shuffling and more dealing with customers, suppliers and other humans. Second, such far-reaching organisational innovation puts exceptional demands on managers—not as power-users of Windows, heaven forbid, but as leaders of men. The phase of mere automation is difficult to manage in its own right; beyond that lies the even more important phase of identifying and pursuing the new business opportunities that the technology has brought within reach. Front-office workers with "people skills" and good managers (in the old-fashioned sense of that term) are the main winners from the IT revolution.

This story might seem more persuasive as an account of the early stages of the IT revolution than of what is happening now. Mr. Bresnahan argues, on the contrary, that this pattern of innovation is going to persist. PCs, as such, he regards as an unimportant technology so far as the labour market is concerned. However, networks of PCs are another thing: the advance of networked-computer systems in business

has already led, he argues, to a new surge of organisational innovation. Inter-organisational networking, involving the automation of company bureaucracies devoted to buying and selling, could in future be as fruitful as the earlier phases of large-scale business automation: as he points out, "the amount of mid-skill white-collar work in buying and selling is stunning."

The only drawback of this emphasis on the organisational as opposed to individual-worker complementarity of IT is that it makes it harder to say exactly which skills the economy is going to need. Indeed, if Mr. Bresnahan is right, economists' standard ways of categorising workers according to skill are wrong: there is more (or less) to it than education and training, narrowly defined. Thanks to computers, oddly enough, the ability to get on well with other people is going to be even more valuable in future than it has been up to now. Possible slogan for far-sighted governments: courtesy, our strategic economic resource.

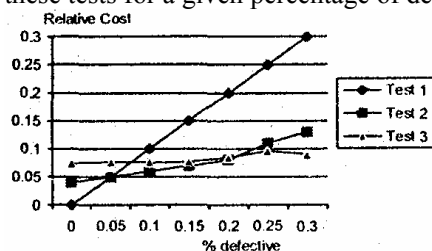
95. Why is the knowledge-worker theory considered to be half-baked in explaining rising wage inequalities?
  - a. Its advocates concentrate on the wage dispersing role of PCs.
  - b. Office PCs are chiefly used for word processing and spreadsheets.
  - c. inequality dates back much further than the 1980s.
  - d. it is a combination of many factors.
96. Why does the author compare computers with pencils?
  - a. to show that pencils are strongly correlated with pay
  - b. to show that pencils have not shifted income distribution
  - c. pencils and computers are both tools used by the office worker
  - d. to debunk the computer theory of wage disparities
97. Why does Mr. Bresnahan see computing as an agent of revolution in organisations?
  - a. it will lead to substituting low skilled clerical workers
  - b. computers have been used to save huge sums in information-intensive functions
  - c. computers have had major changes in employment matters
  - d. none of the above
98. Because of the IT revolution, we can expect the wages of the following to rise:
  1. software experts
  2. people who can use computers effectively
  3. managers
  - a. 1 & 2
  - b. 2 & 3
  - c. Only 1

- d. Only 3
99. Which of the following effects will networking bring in organisations?
- it will bring in a new surge of organisational innovation
  - it will lead to automation of mid-skill white collar work
  - it will lead to less bureaucracy
  - none of the above
100. Which skills are going to be greatly in demand in the future?
- the ability to get on well with other people
  - the ability to work with computers
  - the ability to manage and to lead
  - all of the above

### SECTION-III

For Q. 101 to 105 use the following data:

A manufacturer can choose from any of the three types of tests available for checking the quality of his product. The graph gives the relative costs for each of these tests for a given percentage of defective pieces.



- 101.
102. If  $p$  is equal to 0.2, then which test will be feasible?
- either 1 or 2
  - 2 only
  - 3 only
  - either 2 or 3
103. When will Test-3 be feasible?
- $P > 0.2$
  - $0.1 < p < 0.2$
  - $0.05 < p < 0.1$
  - $P < 0.05$
104. When is Test-1 feasible?
- $P < 0.05$
  - $0.0 < p < 0.2$
  - $0.1 < p < 0.2$
  - 0.05 to 0.2
105. If  $p < 0.2$ , then the best alternative will be:
- Test-2
  - Test-3
  - Test-1
  - Not Test-3
- Directions 106 to 115 are independent of each other:
106. From a circular sheet of paper with a radius of 20 cm, four circles of radius 5cm each are cut out. What is the ratio of the paper left to the area of the circles?
- 1:3
  - 4:1
  - 3:1
  - 4:3
107. Two liquids A and B are in the ratio 5: 1 in container 1 and in container 2, they are in the ratio 1: 3. In what ratio should the contents of the two containers be mixed so as to obtain a mixture of A and B in the ratio 1 : 1?
- 2:3
  - 4:3
  - 3:2
  - 3:4
108. Out of two-thirds of the total number of basket-ball matches, a team has won 17 matches and lost 3 of them. What is the maximum number of matches that the team can lose and still win three-fourths of the total number of matches, if it is true that no match can end in a tie?
- 4
  - 6
  - 5
  - 3
109. A closed wooden box of thickness 0.5 cm and length 21 cm, width 11 cm, and height 6 cm, is painted on the inside. The cost of painting is Rs 70. What is the rate of painting in rupees per sq. cm?
- 0.7
  - 0.5
  - 0.1
  - 0.2
110. If a number 774958A96B is to be divisible by 8 and 9, the values of A and B, respectively, will be:
- 7,8
  - 8,0
  - 5,8
  - None of these
111. Once I had been to the post-office to buy stamps of five rupees, two rupees and one rupee. I paid the clerk Rs 20, and since he did not have change, he gave me three more stamps of one rupee. If the number of stamps of each type that I had ordered initially was more than one, what was the total number of stamps that I bought?
- 10
  - 9
  - 12
  - 8

112. Given the quadratic equation  $x^2 - (A - 3)x - (A - 2)$ , for what value of A will the sum of the squares if the roots be zero?

- 2
- 3
- 6
- None of these

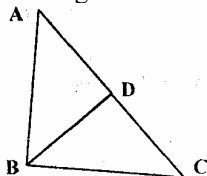
113. I sold two watches for Rs. 300 each, one at a loss of 10% and the other at a profit of 10%. What is the percent loss (-) or the percent profit (+) that resulted from the transaction?

- (+) 10
- (-) 1
- (+) 1
- 0

114. The price of a Maruti car rises by 30% while the sales of the car came down by 20%. What is the percent change in the total revenue?

- 4
- 2
- +4
- 0

115. In triangle ABC, angle B is a right angle. If AC is 6 cm, and D is the mid-point of side AC, the length of BD is:



- 4 cm
- 6 cm
- 3 cm
- 3.5 cm

**Q. 116 and 117:** are based on the following information : A, S, M and Dare functions of x and y, and they are defined as follows:

$$A(x, y) = x + y$$

$$S(x, y) = x - y$$

$$M(x, y) = xy$$

$$D(x, y) = x/y, \text{ where } y \neq 0.$$

116. What is the value of  $M(M(A(M(x, y), S(y, x)), x), A(y, x))$  for  $x = 2, y = 3$

- 50
- 140
- 25
- 70

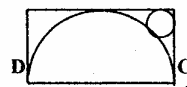
117. What is the value of  $S(M(D(A(a, b), 2), D(A(a, b), 2)), M(D(S(a, b), 2), D(S(a, b), 2)))$

- $a^2b^2$
- ab
- $a^2 - b^2$
- a/b

118. The figure shows a rectangle ABCD with a semi-circle and circle inscribed inside it as

shown. What is the ratio of the area of the circle to that the semi-circle?

A B



- $(\sqrt{2} - 1)^2$
- $2(\sqrt{2} - 1)^2$
- $(\sqrt{2} - 1)^2/2$
- None of these

119. Which of the following value of x do not satisfy the inequality  $x^2 - 3x + 2 > 0$  at all?

- $1 \leq x \leq 2$
- $-1 \geq x \geq -2$
- $0 \leq x \leq 2$
- $0 \geq x \geq -2$

120. A man travels three-fifths of distance AB at a speed of 3a, and the remaining at a speed of 2b. If he goes from B to A and back at a speed of 5c in the same time, then:

- $1/a + 1/b = 1/c$
- $a + b = c$
- $1/a + 1/b = 2/c$
- None of these

**Q. 121 to 122 are based on the following data:**

A salesman enters the quantity sold and the price into the computer. Both the numbers are two-digit numbers. Once, by mistake, both the numbers were entered with their digits interchanged. The total sales value remained the same, i.e. Rs. 1148, but the inventory reduced by 54.

121. What is the actual price per piece?

- 82
- 28
- 56
- 14

122. What is the actual quantity sold?

- 28
- 14
- 82
- 41

**Q. 123 and 124:** In a locality, there are five small towns, A, B, C, D and E. The distances of these towns from each other are as follows:

AB=2km AC=2km AD>2km AE>3km BC=2km  
BD=4km BE=3km CD=2km CE=3km DE>3km

123. If a ration shop is to be set up within 2 km of each city, how many ration shops will be required?

- 2
- 3
- 4
- 5

124. If a ration shop is to be set up within 3 km of each city, how many ratio shops will be required?
- 1
  - 2
  - 3
  - 4

**For Q. 125-128, choose the best alternative:**

125. The cost of a diamond varies directly as the square of its weight. Once, this diamond broke into four pieces with weights in the ratio 1 : 2 : 3 : 4. When the pieces were sold, the merchant got Rs. 70,000 less. Find the original price of the diamond.
- Rs. 1.4 lakh
  - Rs. 2.0 lakh
  - Rs. 1.0 lakh
  - Rs. 2.1 lakh
126. A cube of side 12 cm is painted red on all the faces and then cut into smaller cubes, each of side 3 cm. What is the total number of smaller cubes having none of their faces painted?
- 16
  - 8
  - 12
  - 24
127. The points of intersection of three lines,  $2X + 3Y - 5 = 0$ ,  $5X - 7Y + 2 = 0$ , and  $9X - 5Y - 4 = 0$ :
- form a triangle.
  - are on lines perpendicular to each other.
  - are on lines parallel to each other.
  - are coincident.
128. If  $n$  is any odd number greater than 1, then the largest number that divides  $n(n^2 - 1)$  is:
- 48
  - 24
  - 6
  - None of these

**Q. 129 to 133 are based on the following information:**

X, Y and Z wish to go from place A to place B, which are separated by a distance of 70 km. All the three persons start off together from A, with X and Y going by Luna at a speed of 20 kmph. X drops V somewhere along the way and returns to pick up Z who has already started walking towards B at a speed of 5 kmph. V, after being dropped by X, starts walking towards B at a speed of 5 kmph. In this manner, all three of them reach B at the same time.

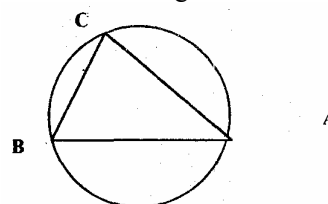
129. How much distance is covered by Z on foot?
- 25 km
  - 10 km
  - 20 km
  - 15 km
130. What is the total distance travelled by X?

- 130 km
- 140 km
- 110 km
- 90 km

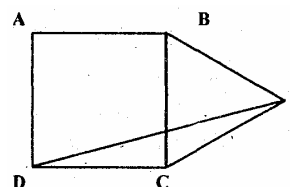
131. How long does it take them to go from A to B?
- 6.0 hours
  - 6.5 hours
  - 7.0 hours
  - 14.0 hours
132. After how much time is Y dropped on the way by X?
- 2.0 hours
  - 3.0 hours
  - 2.5 hours
  - 1.5 hours
133. For how long does X travel alone over the entire journey?
- 2.5 hours
  - 1.0 hour
  - 2.0 hours
  - 1.5 hours.

**Directions Q 134-138:** The questions are independent of each other.

134. The figure shows a circle of diameter AB and radius 6.5 cm. If chord CA is 5 cm long, find the area of triangle ABC.



- 60 sq.cm.
  - 30 sq.cm
  - 40 sq.cm.
  - 52 sq.cm.
135. In a locality, two-thirds of the people have cable-TV, one-fifth have VCR, and one-tenth have both, what is the fraction of people having either cable TV or VCR?
- 19/30
  - 3/5
  - 17/30
  - 23/30
136. If ABCD is a square and BCE is an equilateral triangle, what is the measure of the angle DEC?



- 15°
- 30°
- 0°
- 45°

137. I bought 5 pens, 7 pencils and 4 erasers. Rajan bought 6 pens, 8 erasers and 14 pencils for an amount which was half more than what I had paid. What percent of the total amount paid by me was paid for the pens?
- 37.5%
  - 625%
  - 50%
  - None of these
138. If  $x$  is a positive integer such that  $2x + 12$  is perfectly divisible by  $x$ , then the number of possible values of  $x$  is:
- 2
  - 5
  - 6
  - 12

**For Q. 139 and 140, use the following information:**

A watch dealer incurs an expense of Rs 150 for producing every watch. He also incurs an additional expenditure of Rs. 30,000, which is independent of the number of watches produced. If he is able to sell a watch during the season, he sells it for Rs. 250. If he fails to do so, he has to sell each watch for Rs. 100.

139. If he is able to sell only 1200 out of the 1500 watches he has made in the season. then in the season he has made a profit of
- Rs. 90,000
  - Rs. 75,000
  - Rs. 45,000
  - Rs. 60,000
140. If he produces 1500 watches, what is the number of watches that he must sell during the season in order to break even, given that he is able to sell all the watches produced?
- 500
  - 700
  - 800
  - 1,000

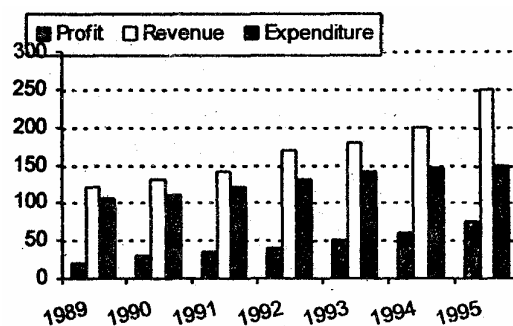
**Directions Q 141-145:** The questions are independent of each other.

141. A man travels from A to B at a speed of  $x$  kmph. He then rests at B for  $x$  hours. He then travels from B to C at a speed of  $2x$  kmph and rests at C for  $2x$  hours. He moves further to D at a speed twice as that between B and C. He thus reaches D in 16 hours. If distances A-B, B-C, C-D are all equal to 12 km. the time for which he rested at B could be:
- 3 hours
  - 6 hours
  - 2 hours
  - 4 hours
142. Instead of a metre scale, a cloth merchant uses a 120 cm scale while buying, but uses an 80 cm scale while selling the same cloth. If he

offers a discount of 20 percent on cash payment, what is his overall percent profit?

- 20%
  - 25%
  - 40%
  - 15%
143. A man has nine friends, four boys and five girls. In how many ways can he invite them, if there have to be exactly three girls in the invitees?
- 320
  - 150
  - 80
  - 200
144. In a watch, the minute hand crosses the hour hand for the third time exactly after every 3 hrs 18 mm 15 seconds of watch time. What is the time gained or lost by this watch in one day?
- 14 mm 10 seconds lost
  - 13 mm 50 seconds lost
  - 13 min 20 second gained
  - 14 mm 40 second gained.
145. In a mile race Akshay can be given a start of 128 meters by Balram. If Balram can give Chetan a start of 4 metres in a 100 metres dash, then who out of Akshay and Chetan will win a race of one and halfmile, and what will be the final lead given by the winner to the loser? (One mile is. 1600 metres).
- Akshay,  $1/12$  miles
  - Chetan,  $1/32$  miles
  - Akshay,  $1/24$  miles
  - Chetan,  $1/16$  miles

**Q. 146 to 150 are based on the following graph:**



146. Which year showed the greatest percentage increase in profit as compared to the previous year?
- 1993
  - 1994
  - 1990
  - 1992
147. The average revenue collected in the given seven years is approximately:
- Rs. 164 lakh
  - Rs. 168 lakh



- c. Rs. 171 lakh  
d. Rs. 175 lakh
148. In which year was the growth in expenditure greatest as compared to the previous year?  
a. 1993  
b. 1995  
c. 1991  
d. 1992
149. The expenditure for the seven years together forms what percent of the revenues during the same period?  
a. 75%  
b. 67%  
c. 62%  
d. 83%
150. If the profit in 1996 shows the same annual rate of growth as it had shown in 1995 over the previous year, then what approximately will be the profit in 1996?  
a. Rs. 72 lakh  
b. Rs. 86 lakh  
c. Rs. 93 lakh  
d. Rs. 78 lakh

**Q. 151 to 155 are based on the following table, which gives data about certain coffee producers in India:**

Coffee	Production ('000 tonnes) (tonnes)	Capacity Utilization (%)	Sales ('000 Sales)	Total value (Rs./ Cr.)
Brooke Bond	2.97	76.50	2.55	31.15
Nestle	2.48	71.20	2.03	26.75
Lipton	1.64	64.80	1.26	15.25
MAC	1.54	59.35	1.47	17.45
<b>Total (incl others)</b>	<b>11.60</b>	<b>61.30</b>	<b>10.67</b>	<b>132.80</b>

151. What is the maximum production capacity (in '000 tonnes) of Lipton for coffee?  
a. 2.53  
b. 2.85  
c. 2.24  
d. 2.07
152. The highest price of coffee per kg is for  
a. Nestle  
b. MAC  
c. Lipton  
d. Insufficient data
153. What percent of the total market share (by Sales Value) is controlled by "Others"?  
a. 60%  
b. 32%  
c. 67%  
d. Insufficient data.
154. What approximately is the total production capacity (in tonnes) for coffee in India?  
a. 18,100  
b. 20,300

- c. 18,900  
d. Insufficient data.
155. Which company out of the four companies mentioned above has the maximum unutilised capacity (in '000 tonnes)?  
a. Lipton  
b. Nestle  
c. Brooke Bond  
d. MAC

**For. Q. 156 to 160, use the following data:**

XYZ Software Co., before selling a package to its clients, follows the given schedule:

Month	Stage	Cost (Rs. '000 per man-month)
1-2	Specification	40
3-4	Design	20
5-8	Coding	10
9-10	Testing	10
11-15	Maintenance	10

The number of people employed in each month is:

Month	1	2	3	4	5	6	7	8	9	10	11	12	13	14	15
No. of people employed	2	3	4	3	4	5	5	4	4	1	3	3	1	1	1

156. Due to an overrun, the Design stage took three months, i.e. months 3, 4 and 5. The number of people working on Design in the fifth month was 5. Calculate the percentage change in the cost incurred in the fifth month. (due to improvement in "Coding" technique, the stage was completed in months 6-8 only).  
a. 225%  
b. 150%  
c. 275%  
d. 240%
157. With reference to the above question, what is the cost incurred in the new "Coding" stage? (Under the new technique, 4 people work in the sixth month and 5 in the eighth).  
a. Rs. 1,40,000  
b. Rs. 1,50,000  
c. Rs. 1,60,000  
d. Rs. 1,70,000
158. Under the new technique, which stage of Software Development is most expensive for XYZ Software company?  
a. Testing  
b. Specification  
c. Coding  
d. Design
159. Which five consecutive months have the lowest average cost per man-month under the new technique?  
a. 1-5  
b. 9-13  
c. 11-15  
d. None of the these

160. What is the difference in the cost between the old and the new techniques?
- Rs. 30,000
  - Rs. 60,000
  - Rs. 70,000
  - Rs. 40,000

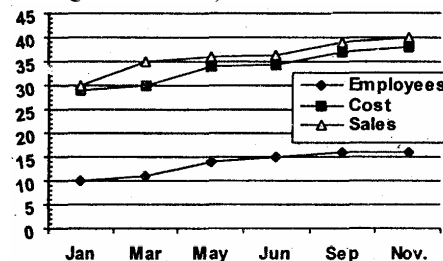
**Q. 161 -165 are based on the following information:**

The amount of money invested (in rupees crore) in the core infrastructure areas of two districts, Chittoor and Khammam, Andhra Pradesh as follows:

Chittoor District			Khammam District		
Core Area	1995	1996	Core Area	1995	1996
Electricity	815.2	1054.2	Electricity Area	2065.8	2365.1
Chemical	389.5	476.7	Chemical	745.5	986.4
Thermal	690.4	565.9	Thermal	1232.7	1026.3
Solar	468.1	589.6	Solar	1363.5	1792.1
Nuclear	617.9	803.1	Nuclear	1674.3	2182.1
Total	2981.1	3489.5	Total	7081.6	8352.0

161. By what percent was the total investment in the two districts more in 1996 as compared to that in 1995?
- 14%
  - 21%
  - 24%
  - 18%
162. Approximately how many times the total investment in Chittoor was the total investment in Khammam in the given two years?
- 2.8
  - 2.0
  - 2.4
  - 1.7
163. The investment in Electricity and Thermal Energy in 1995 in these two districts formed what percent of the total investment made in that year?
- 41%
  - 47%
  - 52%
  - 55%
164. In Khammam district the investment in which area in 1996 showed the least percent increase over the investment in that area in 1995?
- Electricity
  - Chemical
  - Solar
  - Nuclear
165. If the total investment in Khammam shows the same rate of increase in 1997, as it had shown from 1995 to 1996, what appropriately would be the total investment in Khammam in 1997 (in Rs. crore)?
- 9,850
  - 10,000
  - 9,170
  - 8,540

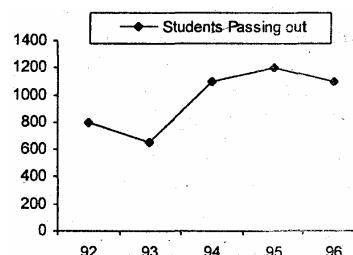
**For Q. 166 to 170, refer to the following graph:**



166. Which month has the highest profit per employee?
- September
  - July
  - January
  - March
167. Which month records the highest profit?
- September
  - July
  - March
  - May
168. In which month is the percentage increases in Sales the highest?
- March
  - September
  - July
  - May
169. In which month is the total increase in the Cost highest as compared to the Cost two, months ago?
- March
  - September
  - July
  - May
170. Assuming that no employee left the job, how many more people did the company take on in the given period?
- 4,600
  - 5,100
  - 5,800
  - 6,400

**Q. 171 to 175 are based on the following data:**

The first table gives the percentage of students in the class of M.B.A who sought employment in the areas of Finance, Marketing and Software. The second table given the average starting salaries of the students per month, in these areas.



Year	Finance	Marketing	Software	Other
1992	12	36	19	23
1993	17	48	23	12
1994	23	43	21	13
1995	19	37	16	28
1996	32	32	20	16

Year	Finance	Marketing	Software
1992	5,450	5,450	5,290
1993	6,380	6,380	6,440
1994	7,550	7,550	7,050
1995	8,920	8,920	7,760
1996	9,810	9,810	8,640

171. The number of students who got jobs in finance is less than the number of students getting marketing jobs, in the five years, by

- 826
- 650
- 725
- 548

172. In 1994, students seeking jobs in finance earned Rs. \_\_\_\_\_ more than those opting for software (in lakhs)

- 43
- 33.8
- 28.4
- 38.8

173. What is the percent increase in the average salary of Finance from 1992 to 1996?

- 60
- 32
- 96
- 80

174. What is the average monthly salary offered to a management graduate in the year 1993?

- 6433
- 6330
- 6333
- Cannot be determined.

175. The average annual rate at which the initial salary offered in Software, increases

- 21%
- 33%
- 16.3%
- 65%

#### Directions for Q. 176 to 185:

In each question, you are given certain data followed by two statements. For answering the questions:

Mark a, if both the statements together are insufficient to answer the question.

Mark b, if any one of the two statements is sufficient to answer the question.

Mark c, if each statement alone is sufficient to answer the question.

Mark d, if both the statements together are sufficient to answer the question, but neither statement alone is sufficient.

176. What is the Cost Price of the article?

- After selling the article, a loss of 25% on Cost Price incurred.
- The Selling Price is three-fourths of the Cost Price.
  - if both the statements together are insufficient to answer the question.
  - if any one of the two statements is sufficient to answer the question.
  - if each statement alone is sufficient to answer the question.
  - if both the statements together are sufficient to answer the question, but neither statement alone is sufficient.

177. If a, b, c are integers, is  $(a - b + c) > (a + b - c)$ ?

- b is negative
- c is positive.
  - if both the statements together are insufficient to answer the question.
  - if any one of the two statements is sufficient to answer the question.
  - if each statement alone is sufficient to answer the question.
  - if both the statements together are sufficient to answer the question, but neither statement alone is sufficient.

178. What is the Selling Price of the article?

- The profit on Sales is 20%.
- The profit on each unit is 25% and the Cost Price is Rs. 250.
  - if both the statements together are insufficient to answer the question.
  - if any one of the two statements is sufficient to answer the question.
  - if each statement alone is sufficient to answer the question.
  - if both the statements together are sufficient to answer the question, but neither statement alone is sufficient.

179. A tractor travelled a distance of 5 m. What is the radius of the rear wheel?

- The front wheel rotates "N" times more than the rear wheel over this distance.
- The circumference of the rear wheel is "t" times that of the front wheel.

- a. if both the statements together are insufficient to answer the question.
- b. if any one of the two statements is sufficient to answer the question.
- c. if each statement alone is sufficient to answer the question.
- d. if both the statements together are sufficient to answer the question, but neither statement alone is sufficient.
180. What is the ratio of the two liquids A and B in the mixture finally, if these two liquids kept in three vessels are mixed together? (The containers are of equal volume)
- The ratio of liquid A to liquid B in the first and second vessel is, respectively, 3 : 5, 2 : 3.
  - The ratio liquid A to liquid B in vessel 3 is 4 : 3.
- a. if both the statements together are insufficient to answer the question.
- b. if any one of the two statements is sufficient to answer the question.
- c. if each statement alone is sufficient to answer the question.
- d. if both the statements together are sufficient to answer the question, but neither statement alone is sufficient.
181. If  $\alpha, \beta$  are the roots of the equation  $(ax^2+bx+c=0)$ , then what is the value of  $(\alpha^2+\beta^2)$ ?
- $\alpha+\beta = -(b/a)$
  - $2\alpha\beta = (c/a)$
- a. if both the statements together are insufficient to answer the question.
- b. if any one of the two statements is sufficient to answer the question.
- c. if each statement alone is sufficient to answer the question.
- d. if both the statements together are sufficient to answer the question, but neither statement alone is sufficient.
182. What is the number of type 2 widgets produced, if the total number of widgets produced is 20,000?
- If the production of type - 1 widgets increases by 10% and that of type-2 decreases by 6%, the total production remains the same.
  - The ratio in which type - 1 and type - 2 widgets are produced is 2: 1.
183. How old is Sachin in 1997?
- Sachin is 11 years younger than Anil whose age will be prime number in 1998.
  - Anil's age was a prime number in 1996.
- a. if both the statements together are insufficient to answer the question.
- b. if any one of the two statements is sufficient to answer the question.
- c. if each statement alone is sufficient to answer the question.
- d. if both the statements together are sufficient to answer the question, but neither statement alone is sufficient.
184. What is the total worth of X's assets?
- Compound interest at 10% on his assets, followed by a tax of 4% on the interest, fetches him Rs. 15000 this year.
  - The interest is compounded once every four months.
- a. if both the statements together are insufficient to answer the question.
- b. if any one of the two statements is sufficient to answer the question.
- c. if each statement alone is sufficient to answer the question.
- d. if both the statements together are sufficient to answer the question, but neither statement alone is sufficient.
185. How many different triangles can be formed?
- There are 16 coplanar, straight lines in all.
  - No two lines are parallel.
- a. if both the statements together are insufficient to answer the question.
- b. if any one of the two statements is sufficient to answer the question.
- c. if each statement alone is sufficient to answer the question.
- d. if both the statements together are sufficient to answer the question, but neither statement alone is sufficient.