

- **NATA & AIEEE B.Arch. 2011 Classroom New Batches are starting from: "15 Jan 2011, 26-jan-2011, 10-feb2011, 21-feb-2011, 3-march 2011, 15-march-2011, 01- april 2011, 15-april-2011.....further batches will be updated on 31st march2011**

# NATA 2011

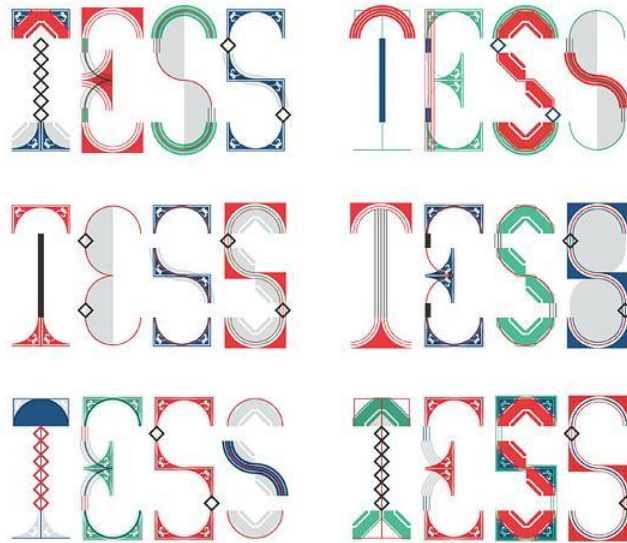
## NATA

# Sample Question

The document contains Mock papers for NATA 2011.

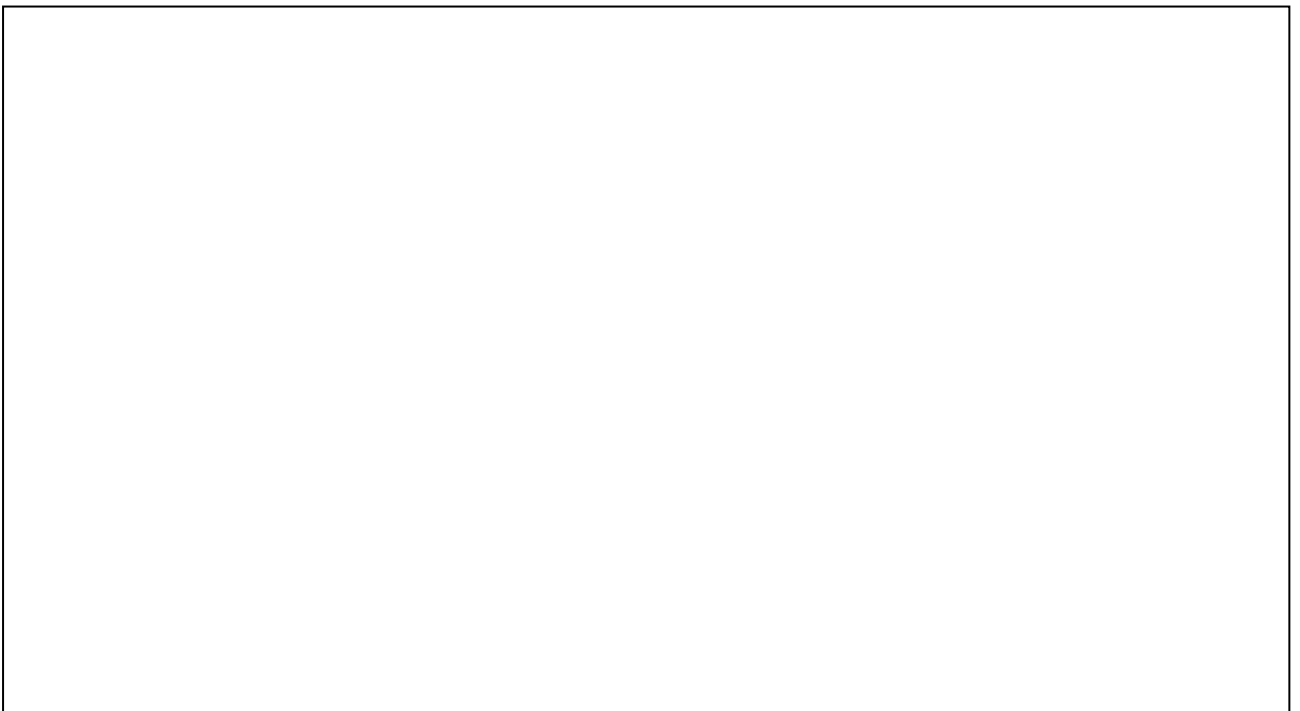
From:  
ICR Education services, Fortune estate, Phase-01, Hall  
No. 6, first floor, Kolar road, Bhopal, M.P., India,  
P.No: 07552492989, 07554284808, 09755940022,  
09302127874

1. Draw a sketch of composition using 02 Rectangles, 02 circles, 01 triangle and 03 lines and colour with 02 primary and 01 secondary colour.
2. You have Given 06 combination of 4 ALPHABETS, Draw a composition of using any 03 combination in 10cm x 10 cm space.

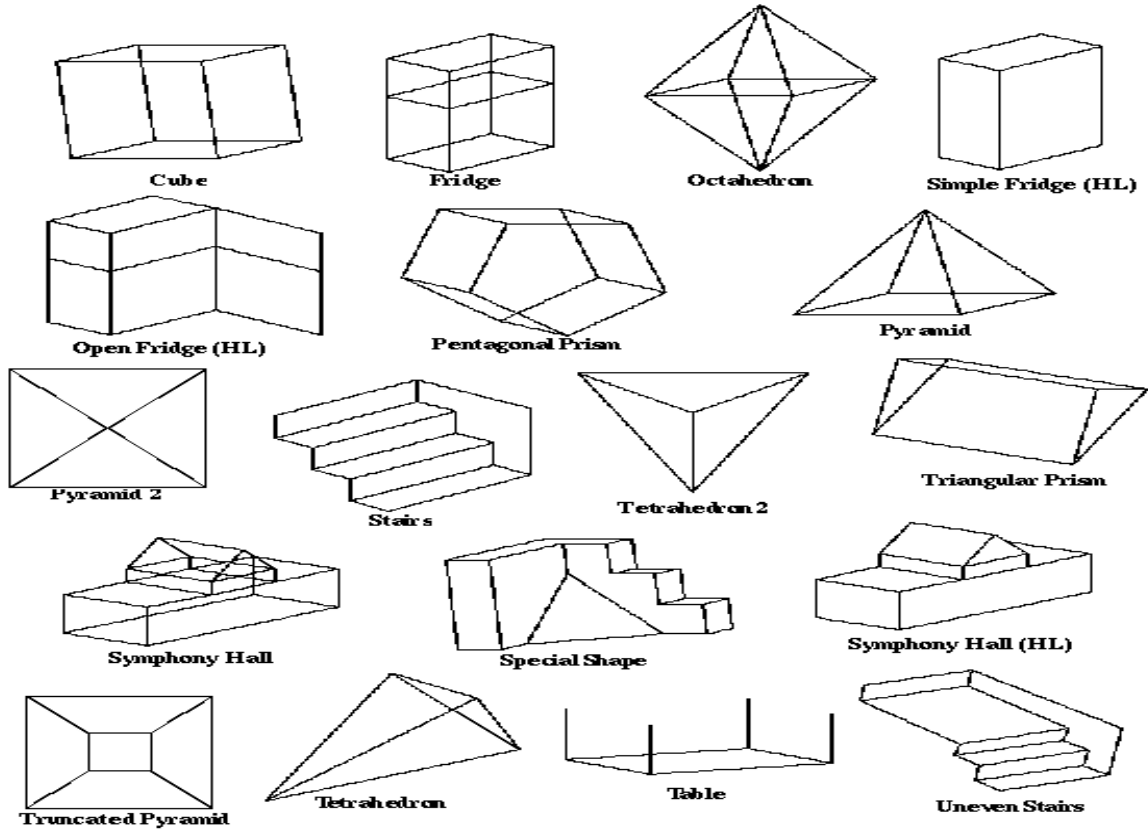


( 06 COMBINATION OF 4 ALPHABETS )

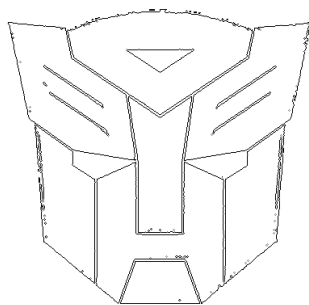
3. Sketch a View of Typical "Rural Mela"



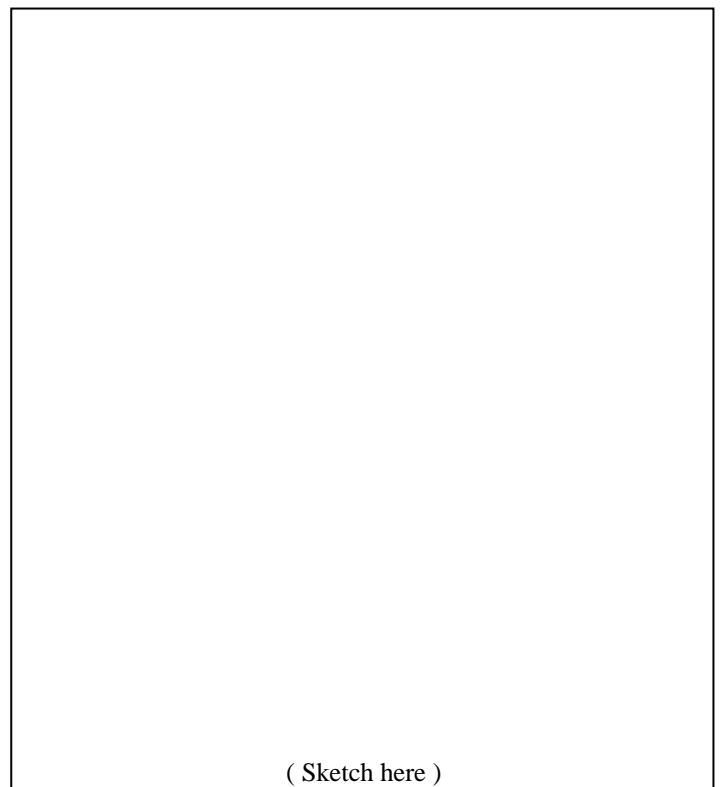
4. You have Given some shapes Below, Unfolded the objects and sketch it for every shape given below.



5. You have given a Sketch-8 below, Enlarge the Given sketch 03 Times and Colour it By Your choice of Colours.



(Sketch-8)



( Sketch here )



For NATA/AIEEE/B.Arch. 2011 / 2012  
Tutorial, study material, Online Live classes,  
Physical classes Please visit  
<http://www.architectureaptitude.com/PackageDetailsNata.aspx>