

QUEEN'S SCHOOL OF BUSINESS CENTRE FOR RESPONSIBLE LEADERSHIP

Queen's School of Business Centre for Responsible Leadership (formerly the Centre for Corporate Social Responsibility) is committed to inspiring practitioners, researchers, teachers, and students of business to instill responsible leadership as an integral part of their thinking and practice.

2009/2010 MILESTONES

- Attracted more than 260 Commerce and MBA students, faculty, staff and practitioners to the annual CSR Weekend.
- Launched a new Certificate in Socially Responsible Leadership for students in the Accelerated MBA for Business Graduates program, with 46 students enrolling.
- 28 Commerce students graduated with CSR Certificates; 119 new students enrolled.
- Launched the Responsible Leadership Speakers Series featuring leading academics and practitioners and monthly lunch presentations on research by QSB faculty and graduate students.
- Facilitated student and staff travel to Mexico to build homes as part of the Homes of Hope initiative, thanks to the generous sponsorship of Boardwalk Properties.



Commerce 2010 graduates receive their Corporate Social Responsibility Certificates

THE CA-QUEEN'S CENTRE FOR GOVERNANCE

The Centre funds Queen's faculty and doctoral student research into Canadian and international corporate governance issues, especially those that relate to audit committees and quality financial reporting. The Centre, which is partially funded through the generosity of the Institute of Chartered Accountants of Ontario, also contributes to the creation of leading-edge curriculum.



CA-Queen's Centre for Governance Director Steve Salterio (left) with Brian Leader, VP of Learning, The Institute of Chartered Accountants of Ontario, at the VSRA ceremony in November

2009/2010 MILESTONES

- Expanded the Voluntary Sector Reporting Awards (VSRAs) to national and international not-for-profit (NFP) organizations headquartered in Ontario. The VSRAs recognize NFPs whose annual reports demonstrate the highest levels of accountability and transparency.
- Funded basic and applied research in governance on such diverse topics as fraud detection, and information systems development and oversight.
- Had its research on fraud by insiders in NFPs published in *The Philanthropist*, the quarterly journal that focuses on the Canadian NFP sector. The surprising finding was the prevalence of jail terms for those NFP insiders who were prosecuted.

QUEEN'S CENTRE FOR BUSINESS VENTURING

Queen's Centre for Business Venturing supports the creation, leadership and management of new ventures. Its activities range from embedding new venture thinking into the curriculum – including an elective course that enables students to invest monies from the TriColour Venture Fund – to providing new ventures with access to capital, and conducting applied research in business venturing.

2009/2010 MILESTONES

- Dare to Dream internships that provide access to faculty mentors and business contacts and up to \$15,000 in seed funding were awarded to:

Roger Patterson, MBA'10, the Battat & Steffenson Intern who is developing an adaptable mobile entertainment platform called Flock-and-Swarm that runs on smart phones and uses GPS capabilities to meld players' physical locations with their gaming experience.

Mohamed Al Guindy, MBA'10, the CIBC Intern whose Bay Financial Systems venture aims to produce software suites to analyze an investor's profile and objectives and devise an optimal asset allocation strategy.

Mike Matheson, MBA'10, the Cogeco Intern whose 'One Market Ticketing' system is designed for organizers of major events to increase their profits by pricing and selling tickets at market value, thereby diverting profits from ticket resellers.

Ahmed Iqbal, BCom'10, QCBV Intern whose venture 'Buildmylanyard.com' provides customized lanyards with name badges and other information for conference and event attendees.

Jean-François Warlop of Quadra Chemicals Ltd., one of the top 50 Best Employers in the BSME Survey



- The TriColour Venture Fund program continues to gain momentum with MBA students evaluating 15 business plans, conducting due diligence reviews of three companies, and recommending investing in two new ventures: SPARQ Systems Inc., a manufacturer of technology that improves efficiency of solar panels; and Vennsa Technologies Inc., a supplier of automated debugging and error localization software.
- The fourth annual Best Small and Medium Employers (BSME) survey continued to see growth with more than 200 SME businesses qualifying. The top 50 were profiled in *PROFIT Magazine*. Visit business.queensu.ca/centres/qcbv for more information on participating in the survey.

QUEEN'S EXECUTIVE DECISION CENTRE

Queen's Executive Decision Centre is Canada's first electronic group-decision support laboratory. Participants in meetings facilitated by Centre staff – either at Goodes Hall or using the Portable Decision Centre in their



Centre Director Erik Lockhart (standing) facilitates an electronic brainstorming session

own facilities – use networked laptops to contribute their expertise to the discussions. In this way the Centre supports the planning and decision-making tasks of executive teams from private- and public-sector organizations and is also used by Queen's faculty, staff and students.

2009/2010 MILESTONES

- Facilitated more than 90 electronic brainstorming events, including the development of strategic plans for several private-sector companies, 10 cities across Canada, four community hospitals and 15 provincial and national associations, and the formulation of annual or academic plans for the Faculty of Engineering and Applied Science, the Faculty of Law, the School of Kinesiology and Health Studies, and five departments: Psychiatry, Obstetrics, Mining, Career Services, and Mechanical Engineering.

Global Presence



Students on exchange (photo contest
submission from Denise Leung, BCom'10)

Global Presence

DUAL DEGREE PROGRAMS

MASTER OF MANAGEMENT – GLOBAL MANAGEMENT

Students in this post-graduate program have the option of obtaining a double degree from Queen's and one of its five partner schools: Maastricht University, Netherlands; HEC School of Management, France; Mannheim University, Germany; Bocconi University, Italy; and Copenhagen Business School, Denmark. International study at one of QSB's partner schools allows for cross-cultural learning that greatly enhances the impact of the program.

CORNELL-QUEEN'S EXECUTIVE MBA

Graduates of this 18-month program receive both a Queen's MBA and Cornell MBA degree. Students from Canada and the U.S. share learning experiences in Boardroom Learning Centre locations in both countries and during residential sessions in Ithaca, NY, and Kingston, ON.



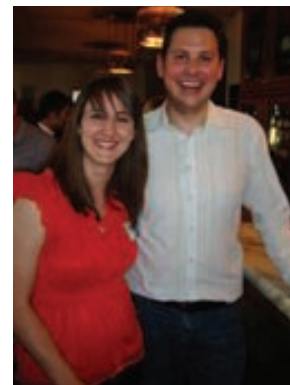
INTERNATIONAL COMPOSITION OF FACULTY: 48%

COUNTRIES OF ORIGIN OF QSB STUDENTS INCLUDE:

Australia, Bangladesh, Belgium, Bermuda, China, Czech Republic, Democratic Republic of the Congo, Ghana, Greece, India, Israel, Italy, Jamaica, Japan, Jordan, Kenya, Kuwait, Lebanon, Macedonia, Mexico, Netherlands, New Zealand, Nigeria, Oman, Pakistan, Philippines, Russia, Saudi Arabia, Singapore, South Africa, South Korea, Switzerland, Taiwan, Thailand, Togo, Ukraine, UAE, United Kingdom, USA, Vietnam

INTERNATIONAL BUSINESS CLUB CHAPTERS:

Located in New York City, London (UK) and Hong Kong.



QUEEN'S SCHOOL OF BUSINESS

Global Council

In Spring 2010, members of the new QSB Global Council met for the first time at gatherings in New York City and London, UK. Their purpose? To discuss the School's international activities, identify opportunities to expand its presence and reputation globally, and offer advice to hone the School's international strategy. The Global Council brings together alumni and friends with deep experience in key regions where QSB operates. Our thanks to its members, listed below.

Shân Atkins, BCom'79, Corporate Director, Barrington, IL
 Michael Bandzier, MBA'80, Managing Director, TD Securities (USA) Inc., New York, NY
 Mona Brown, BAH'93, New York, NY
 Simon Brown, BCom'93, Principal, Kohlberg Kravis Roberts & Co, New York, NY
 Iain Bruce, BCom'81, Managing Director Risk Management, AMBAC Assurance Corp., New York, NY
 Jeffrey Carney, BCom'84, Senior Managing Director & Head, Putnam Investments Global Marketing and Products, Canton, MA
 Don Carty, BA'68, LLD'01, Chairman, Porter Aviation Holdings Inc., Dallas, TX
 Sheila Cooke-Witt, MBA'83, Pinneberg, Germany
 Jerry del Missier, BSc'85, MBA'87, President and Co-Chief Executive of Corporate and Investment Banking, Barclays Capital, New York, NY
 Ian Friendly, BCom'83, Executive VP & COO, U.S. Retail, General Mills Inc., Minneapolis, MN
 Adrienne Goldthorpe, BCom'99, New York, NY
 Ted Goldthorpe, BCom'99, Managing Director, Goldman Sachs & Co, New York, NY
 Nancy Goodes, Mendham, NJ
 Mel Goodes, BCom'57, LLD'94, Retired CEO, Warner-Lambert Co., Mendham, NJ
 Ken Grewal, BCom'96, Managing Director, Institutional Equity Sales, BMO Capital Markets, New York, NY
 Mike Humphries, BCom'93, Principal, Polygon CB Partners, London, UK
 David Hutton, MBA'70, Director General, Canada-Arab Business Council, Toronto, ON
 Zouheir Jarkas, Senior Advisor, Mubadala Development Company, Abu Dhabi, A.E
 Thomas Kinnear, BCom'66, PhD, LLD'02, Eugene Applebaum Professor of Entrepreneurial Studies, Ross School of Business, University of Michigan, Ann Arbor, MI
 Jim Leech, MBA'73, President & CEO, Ontario Teachers' Pension Plan and Chair, QSB Advisory Board, Toronto, ON
 Rosemary Leith, BCom'83, Director, World Wide Web Foundation, London, UK
 Blair Look, BCom'90, Managing Director, Asset Management, Al Mal Capital, Dubai, A.E
 Walt Macnee, BA'77, BEd'78, President, Global Markets, MasterCard Worldwide, New York, NY
 Doug McCutcheon, BCom'87, Managing Director, UBS Investment Bank, London, UK
 Stephen Miles, EMBA'99, Vice Chairman, Heidrick & Struggles, Atlanta, GA
 Cynthia Phillips, BCom'84, Munich, Germany
 Sam Pollock, BCom'88, Senior Managing Partner, Brookfield Asset Management, London, UK
 Charles Powis, BCom'86, Managing Director, Head US Institutional Sales Fixed Income and Securities, RBC Capital Markets Corporation, New York, NY
 Humayun Rashid, Senior Advisor, Consumer Banking Strategy and Leadership Development Program, Commercial International Bank (Egypt), Cairo
 Paul Sandford, BCom'89, BA'90, Managing Director, Ocean View Global Research, London, UK
 Paul Sands, MBA'87, Managing Director, Klitzberg Associates, New York, NY
 Colin Taylor, BCom'84, Partner & Managing Director, DLJ Merchant Banking Partners, Credit Suisse Alternative Investments, London, UK
 Chris Viehbach, BCom'83, Chief Executive Officer, Sanofi-aventis, Paris, FR
 Brian Walsh, MBA'76, President, QVan Capital LLC, Purchase, NY
 Robert Wardrop, BCom'86, Co-CEO, Belvall Capital, London, UK
 Janet Wells, BCom'90, London, UK
 Tom Wells, BCom'89, Partner, Arma Partners, London, UK
 Tony Whitworth, BCom'75, Former President & CEO, Navios Corp., New York, NY
 Karsten Witt, MBA'83, Executive Director, Witt & Sohn, Pinneberg, Germany
 William Yu, MBA'87, Managing Director, Cansbridge Capital Corp, Atherton, CA

INTERNATIONAL ACCREDITATIONS

Queen's School of Business is one of a select few business schools to be accredited by all three of the world's leading accreditation bodies: The AACSB (Association to Advance Collegiate Schools of Business) located in the U.S.; EQUIS through the European Foundation for Management Development; and the Association of MBAs located in the UK.



David Saunders and Doug McCutcheon at the London Global Council meeting



Blair Look, Rosemary Leith and Jerry del Messier at the London meeting

International Exchanges AND LEARNING OPPORTUNITIES

EXCHANGES

- 244** QSB undergraduate and graduate students studied abroad on exchange
- 288** international students from 26 countries studied at QSB
- 75** top-tier universities partner with QSB to offer student exchanges at the undergraduate and graduate levels (see list on page 27)



GLOBAL BUSINESS PROJECTS

These projects are compulsory in the Executive and Cornell-Queen's Executive MBA programs. Teams complete a comprehensive analysis of a business issue impacting a company located anywhere in the world and travel outside the U.S. and Canada to conduct field research prior to writing a final report.



DOING BUSINESS IN CHINA

A module at the China Europe International Business School in Shanghai brought together students from the Executive MBA and Cornell-Queen's Executive MBA programs in Fall, 2009.

QUEEN'S CONFERENCE ON INTERNATIONAL BUSINESS

An annual conference organized by Commerce students, QCIB brings together student delegates from across North America to hear industry experts offering insights into the world of international business.



QUEEN'S SCHOOL OF BUSINESS CENTRE FOR RESPONSIBLE LEADERSHIP is one of the founding participants in the Globally Responsible Leadership Initiative (GRLI), a joint venture of the UN Global Compact

and the European Foundation for Management Development (EFMD).

The Centre is also one of 322 international participants in the Principles for Responsible Management

GRLI Education (PRME) initiative, also in partnership with the UN Global Compact and EFMD, among others.

International Exchange Partners

COUNTRY	INSTITUTION	CITY	PROGRAM		
			COMMERCE	MASTER OF GLOBAL MANAGEMENT	MBA
Argentina	Universidade Torcuato Di Tella (UTDT)	Buenos Aires	X		X
Australia	University of Adelaide	Adelaide	X		
	The University of Queensland	Brisbane	X		
	University of Melbourne	Melbourne	X		
	The University of Western Australia	Perth	X		
	University of New South Wales	Sydney	X		
	The University of Sydney	Sydney	X	X	
Austria	Wirtschaftsuniversitat Wien (WU Wien)	Vienna	X	X	X
Barbados	University of West Indies	Cave Hill	X		
Belgium	University of Antwerp	Antwerp	X		
	Katholieke Universiteit Leuven	Leuven	X		
	Université Catholique de Louvain	Louvain-la-Neuve	X		
Brazil	Fundacao Getulio Vargas (FGV-EAESP)	Sao Paulo	X		X
Chile	Pontificia Universidad Catolica de Chile	Santiago	X		
China	Peking University, Guanghua School of Management	Beijing	X	X	X
	Tsinghua University	Beijing	X		X
	Chinese University of Hong Kong	Hong Kong	X		
	City University of Hong Kong	Hong Kong	X		
	Hong Kong University of Science and Technology	Hong Kong	X		
	China Europe International Business School (CEIBS)	Shanghai			X
	Fudan University	Shanghai	X		
Denmark	Aarhus School of Business	Aarhus	X	X	
	Copenhagen Business School*	Copenhagen	X		
Estonia	Estonian Business School	Tallinn	X		
Finland	Aalto Helsinki School of Economics	Helsinki and Mikkeli	X	X	
	Hanken School of Economics	Helsinki	X		
France	IAE Aix Graduate School of Management	Aix-en-Provence	X		
	ESSEC Business School	Cergy	X		
	Grenoble Ecole de Management	Grenoble	X		
	EDHEC	Lille and Nice	X		
	Rouen Business School	Mont-Saint-Aignan	X		
	SKEMA Business School	Nice	X		
	ESCP Europe	Paris	X		
	HEC School of Management*	Paris	X		
	Sciences Po	Paris	X		
	Toulouse Business School	Toulouse	X		
Germany	WHU – Otto Beisheim School of Management	Koblenz	X		X
	University of Mannheim*	Mannheim	X	X	X
	European Business School	Weisbaden	X		
Hungary	Corvinus University of Budapest	Budapest	X	X	X
India	Indian School of Business	Hyderabad			X
Ireland	University of Dublin Trinity College	Dublin	X		
Italy	Bocconi University*	Milan	X	X	X
Japan	Nagoya University of Commerce & Business Administration	Nagoya			X
	Waseda University	Nagoya	X		
	Keio University	Tokyo	X		
Mexico	Tecnologico de Monterrey	Monterrey	X		X
Netherlands	Maastricht University School of Business and Economics*	Maastricht	X	X	
	Rotterdam School of Management, Erasmus University	Rotterdam	X		X
New Zealand	University of Auckland	Auckland	X		
	University of Otago	Dunedin	X		
Norway	Norwegian School of Economics and Business Administration (NHH)	Bergen	X		
	BI Norwegian School of Management	Oslo	X	X	
Poland	Warsaw School of Economics	Warsaw	X		
Portugal	Universidade Catolica Portuguesa (FCEE)	Lisbon	X		
	Universidade Nova de Lisboa	Lisbon	X		
Russia	St. Petersburg State University	St. Petersburg	X	X	X
Singapore	Nanyang Technological University	Singapore	X		
	National University of Singapore	Singapore	X		X
	Singapore Management University	Singapore	X		
Slovenia	University of Ljubljana	Ljubljana	X		
South Korea	Korea University	Seoul	X		
	Seoul National University	Seoul	X		
Spain	ESADE Business School	Barcelona	X		
Sweden	Lund University School of Economics and Management (LUSEM)	Lund	X		
	Stockholm School of Economics	Stockholm	X		
	Uppsala University	Uppsala	X		
Switzerland	University of St. Gallen	St. Gallen	X		X
Taiwan	National Chiao Tung University	Hsinchu City	X		
	National Taiwan University	Taipei	X		
Thailand	Chulalongkorn University	Bangkok	X		
United Kingdom	University of Bath	Bath	X	X	
	University of Edinburgh	Edinburgh	X		
	University of Strathclyde	Glasgow	X		
	Cass Business School, City University of London	London	X		
	Manchester School of Business	Manchester	X		

* Double Degree international partners

Note: The above list was current at press time. For the most up-to-date listing, consult the School's website at www.business.queensu.ca/international_opportunities

Financial Report

Queen's School of Business had a good financial year in 2009-2010 despite the economic downturn. The strategic diversification of our funding sources continues to be one of our strengths. Sources of funding increased by 2.5% in fiscal 2010 (May 1, 2009, to April 30, 2010); however, the funding mix shifted more heavily towards MBA programs and away from non-degree executive development programs. The portfolio of MBA programs saw an overall increase in enrolment, primarily due to the full-time program's addition of a second section. Enrolments in the Master of Management – Global Management also increased as the program welcomed its third cohort since its 2007 launch.

STATEMENT OF SOURCES AND USES (ALL AMOUNTS IN '000s)

	Year ended April 30, 2010 (Actual)		Year ended April 30, 2009 (Actual)	
Sources				
University base budget allocation	14,752	27%	13,746	25%
MBA programs	26,684	48%	22,611	42%
Non-degree executive development programs	11,412	21%	15,204	28%
Fundraising gifts and contributions ¹	5,846	11%	3,261	6%
Less: endowed contributions ²	(3,689)	-7%	(1,484)	-3%
Less: restricted for capital project ³	(1,690)	-3%	(1,258)	-2%
Endowment income	1,824	3%	1,805	3%
Other	403	1%	339	1%
Total sources	55,542	100%	54,224	100%
Uses				
Salaries & benefits	29,579	53%	26,627	49%
Direct program expenses	21,010	38%	22,576	42%
Student aid	2,217	4%	2,095	4%
Other	1,212	2%	1,193	2%
Queen's University services	1,353	2%	1,332	2%
Amortization	799	1%	588	1%
Transfer to/(from) unrestricted reserves	(628)	-1%	(187)	0%
Total uses	55,542	100%	54,224	100%

Notes:

1 - Does not include gifts and contributions for the original Goodes Hall construction.

2 - Endowed contributions are those for which the principal must remain intact. The endowment generates investment income presented on this page as 'Endowment income'.

3 - Restricted for capital project are gifts and contributions received for the Goodes Hall Expansion project.

Note: The April 30, 2009 figures have been re-stated for comparative purposes to reflect changes in the University's funding model.



QSB Campaign Chair

It's not often that one gets the opportunity to help drive Canada's top business school to achieve even greater global recognition. So when Dean **David Saunders** asked if I would lead QSB's forthcoming fundraising campaign, I was both honoured and excited at the prospect of raising significant funds for my alma mater.

I'm in an enviable position; **John See, MBA'81**, has led the Fundraising Committee of QSB's Advisory Board since 2006, and in that time, our volunteers and donors have raised more than \$20 million for QSB. Thanks to John's efforts and that strong showing of generosity and support, this next Campaign is positioned for success. John leaves big shoes to fill, and I look forward to the challenge.

As of August 2010, we have raised \$33.8 million toward our \$60 million goal – including solid support for the expansion of Goodes Hall, which Dean Saunders discusses in his message.

In this report, you'll find inspiring stories about donors and friends who have contributed financially to enable QSB to meet the realities of 2010 and beyond. Your annual or reunion gifts – contributed individually or pooled with those of your classmates – along with those of our major gift benefactors, are making a difference. Every penny counts as we continue to build this outstanding, globally relevant business school, and I encourage you to keep up your support.

QSB alumni are leaders in every walk of life, and now is the time to lead again, investing in future generations of Queen's School of Business students.

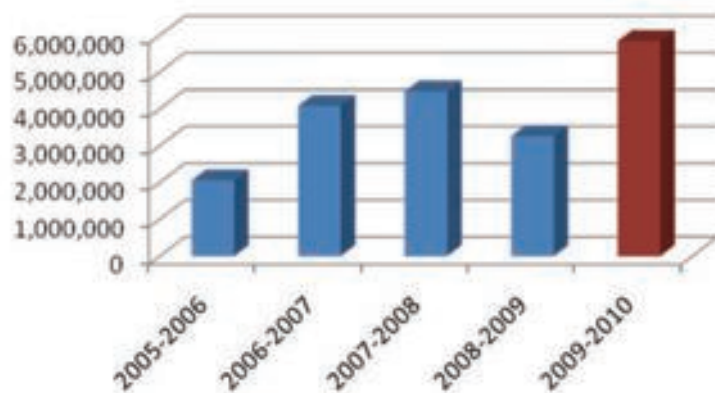


Jerry del Missier, BSc'85, MBA'87
QSB Campaign Chair
President and Co-Chief Executive of
Corporate and Investment Banking
Barclays Capital

Highlights of Giving

SUMMARY OF GIFTS & PLEDGE PAYMENTS RECEIVED (2005-2010)

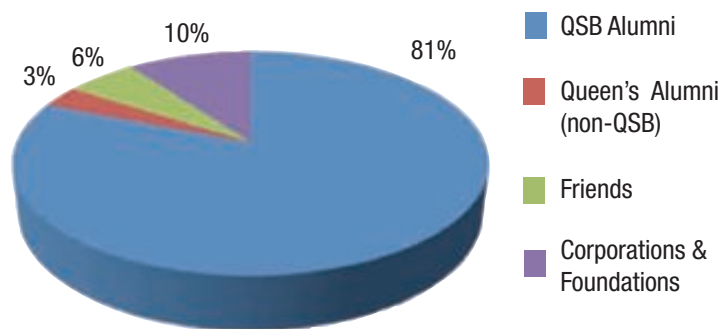
Gifts and contributions to the School (excluding pledges) were \$5.846M (\$3.261M in 2008-09). This increase was due primarily to gifts received for new faculty professorships and the expansion of Goodes Hall. Student aid funding increased from \$2.1M in 2008-09 to \$2.2M in 2009-10. With your donations, the School also recruited new faculty, increased international exchanges with our global partners, invested additional resources in the Business Career Centre and continued the tradition of investing in providing a high-quality academic experience.



Note: Fiscal year end April 30. This graph captures total cash donations received in the 2009-2010 fiscal year. Total cash and pledges received in this fiscal year equal \$7.9M.

GIFTS BY SOURCE (2009-2010)

The support of alumni, friends and corporate partners is critical to QSB's continued success. Alumni donations increased from 78% to 81% of funds raised in the past year. Private support is ever more vital to realizing our vision of becoming one of the world's most innovative and influential business schools.



Note: Fiscal year end April 30. This graph captures total cash donations received in the 2009-2010 fiscal year.

Lifetime Giving

The following list recognizes our generous supporters who have given \$25,000 or more cumulatively to Queen's School of Business as of April 30, 2010.



Lifetime Individual Donors

\$5,000,000+

Melvin Goodes BCom'57, LLD'94
& Nancy Goodes

Donald Sobey BCom'57

\$1,000,000 - \$4,999,999

Donald Carty BAH'68, LLD'01
& Ana Maria Carty

Paul Hand BA'69, MBA'73
& Vicki Gilliatt Hand BA/BPHE'73

Anonymous (3)

\$500,000 - \$999,999

Estate of Donald Alexander Baxter BCom'34

Estate of Muriel Hatch

Eve Heersink MBA'74 & Lynn Heersink

Thomas Kinnear BCom'66, LLD'02

Harold Roozen MBA'79 & Cathy Roozen

Gerald Sutton BCom'48, MCom'49
& Margaret Sutton BA'48

A. Britton Smith LLD'09

Anonymous

\$250,000 - \$499,999

Iain Bruce BCom'81

Gregory Cochrane MBA'74
& Linda Cochrane BA'77, MBA'79

Paul Hyde & Catherine Hyde BA'82

Estate of Donald I. McLeod BA 1908

Harry Mortimore MBA'73

Thomas O'Neill BCom'67, LLD'05
& Susan O'Neill BA'65

Paul Pancham BCom'89, MD'94

Estate of Elizabeth Marie Shantz BCom'27

*Preceding page:
Mel and Nancy Goodes at the Goodes Hall expansion ground breaking ceremony in May*

\$100,000 - \$249,999

Peter Armstrong & Wendy Armstrong
 Dany Battat BCom'78
 Philip Bookalam BCom'68
 Jason Capello BCom'96
 Carolyn Carney BCom'86 & Jeffrey Carney BCom'84
 Andrew Chisholm BCom'81 & Laurie Thomson BAH'84
 Estate of Martha Hazel Coughlin
 Ian Friendly BCom'83 & Carol Friendly
 Ken Grewal BCom'96
 Samuel Gudewill MBA'79
 Nancy Hamm BCom'76 & Richard Hamm BCom'76
 Fred Jaques BCom'80
 Pentti Karkkainen MBA'81
 Michael Kehoe BCom'78
 Paul Kinnear BCom'63 & Carole Kinnear BA'98
 Norman Koo BSc(Eng)'72, MBA'75 & Anna Koo MBA'75
 James Leech MBA'73
 Thomas Miller BCom'79 & Elizabeth Miller BFA'79
 Len Morrow MBA'72
 Max Muselius BA'79, MBA'81
 Joseph Pal BCom'74
 Soni Pancham & Ira Pancham

Ethel Patterson MBA'81 & Michael Bandzierz MBA'80
 Bryan Pearson BScH'86, MBA'88 & Sally Peterson BAH'86, MBA'88
 Sam Pollock BCom'88
 Charles Powis BCom'86
 Derek Russell
 John See BScH'79, MBA'81 & Kathryn See BAH'79
 Christine Sinclair BCom'81 (Deceased)
 Gregory Smith BCom'91 & Crystal Smith
 Gia Steffensen BCom'78 & Jean Steffensen BA'77, BEd'78
 Allan Taylor LLD'91 & Shirley Irene Taylor
 Colin Taylor BCom'84
 Eric Toller BA'50, BCom'51 (Deceased) and Margot Toller
 Jeff van Steenberg BSc(Eng)'77 & Kim van Steenberg BNSc'78
 Brenda Vince BCom'77 & Steven Smith BCom'77
 Brian Walsh BA'74, MBA'76 & Angela Walsh
 Robert Wardrop BCom'86
 John Watson MBA'70
 George Watson BSc(Eng)'70, MBA'72 & Sheila Watson BAH'72
 Cathy Williams MBA'77 & Bruce Williams
 Tony Woodward BCom'75 & Cate Woodward BA'74, MBA'76
 Deborah Yedlin MBA'91 & Martin Molyneaux
 Anonymous



Rob Sobey (front row, third from left) and Don Sobey (at Rob's left) at the annual D&R Sobey Atlantic Scholarships dinner, with current and past scholarship recipients, members of the scholarship selection committee, and Dean David Saunders

\$50,000 - \$99,999

Estate of Jean M. Black
 Dave Brining BCom'79 & Jennifer Brining
 David Brown BCom'73
 Shauneen Bruder MBA'84 & Michael Bruder LLB'84
 Jennifer Camelford BAH'74, MBA'78 & James Camelford BA'77
 Chris Clark BCom'76 & Pamela Clark
 Michael Durland PhD'91
 Adrienne Goldthorpe BCom'99 & Edward Goldthorpe BCom'99
 Jerry Jackson BCom'78
 Michael Keilhauer BCom'76
 Kyle Kitagawa MBA'88
 Janet Lint & Richard Lint
 Margaret MacLellan BAH'79, MBA'81 & Robert F. MacLellan
 Thomas McLaren BCom'49 (Deceased)
 Susan Michel Shuter MBA'81 & John Shuter
 Dusan Miklas & Anne Miklas
 Gordon Nixon BCom'79, LLD'03 & Janet Nixon BCom'80
 Ryan Pedlow BCom'98
 Michael Sifton BCom'83 & Julie Sifton BA'82
 David A Wilson BCom'64
 Anonymous (6)

\$25,000 - \$49,999

M. Shân Atkin BCom'79 & James E. Erbs
 Brent Belzberg BCom'72
 Derek Burney BAH'62, MA'64, LLD'98
 Gregor Caldwell BCom'64 & Elizabeth Caldwell
 Guy Casgrain BCom'78
 Robert Crandall BCom'51 & Frances Crandall
 Daphne Dean BA'71, BScH'73, MSc'78, MBA'81
 Mark DesLauriers BCom'78
 Douglas Dethy BCom'75
 Gordon Fleming BCom'53 (Deceased)
 Michael Gilbert BCom'78 & Cynthia Gilbert BA'78
 John Gleeson BCom'80 & Sarah Gleeson BAH'80
 Andrew Gross BCom'79 & Nora Gross BA'81, BAH'82
 John A. Hallward BCom'83
 Everett Harrison BCom'46
 Douglas Heighington MBA'81
 Gordon Hendren BCom'79
 Glynis Anne Henry BA'76, MBA'78
 Milton Hess BCom'64 & Julia Hess BA'65
 George Holmes BCom'80
 Donald Huggett BA'51, BCom'51
 Andrew Hungerford BCom'96
 Elliott Jacobson MBA'69 & Judy Malkin
 Donald Langill BCom'77 & Carolyn Langill
 Peter Mackenzie BCom'81
 Brian Martin BCom'99
 Rick Martin & Nancy Martin
 Nancy McFadden BAH'74, BEd'76 & Douglas McFadden LLB'75
 Catherine McIntosh BCom'82 & Douglas McIntosh BCom'82
 David G Merkel
 The Melvin Family, Alex Melvin BA'72, MBA'74
 Frederick Mifflin BCom'81
 Susan Miklas BA'65, LLB'88
 Frederick Moote BA'49, BSc(Eng)'49
 Estate of Sylvia Morawetz BCom'75
 Elspeth Murray BScH'85, MBA'87 & Peter Richardson (Faculty)
 Wayne Musselman BCom'64
 Paul Myles BCom'66, MBA'67
 Ian Ness BCom'79
 David Oliver BCom'64, MBA'66 & Gwen Oliver
 Nancy Powis BCom'80
 Sharon Ranson BCom'80
 Ray Richardson MBA '84 & Anne Nurse-Richardson BA'78
 Michael Robins BCom'79 & Susanne Robins BAH'82
 Susan Rooks BCom'84 & Edward Speal BCom'83
 Bruce Runciman BCom'78
 David Sculthorpe BCom'83 & Patricia Sculthorpe BAH'85
 Rob Sobey BAH'88
 Richard Stackhouse BCom'53
 Herbert Wyman, QC, BCom'50
 Anonymous



John and Kathy See and friends at the Spring Reunion luncheon in May

Professorship in International Business

FUNDED BY GENEROUS ALUM



Don Sobey, BCom'57



Dr. Anthony Goerzen

Attracting faculty experts – thought leaders at the top of their fields – is a highly competitive process. Canadian business schools compete with each other and with universities around the world for the brightest minds in a wide variety of business disciplines. Important incentives in recruiting top academics are named professorships and fellowships that provide prestige, recognition and dedicated funds to further research and teaching activities. In the face of a worldwide shortage of qualified business professors, funding such positions not only helps recruit new talent, but also helps retain the School's outstanding team of top researchers and teachers.

“Endowed professorships enable us to encourage and reward higher standards of excellence in scholarship and teaching,” says Dean David Saunders. “These benefit not only our academic culture, but also the overall educational experience of our students.”

Thanks to the generous support of **Don Sobey, BCom'57**, the School was able to recruit **Dr. Anthony Goerzen**, who joined the School in August

as the Donald R. Sobey Professor of International Business. Dr. Goerzen comes to Queen's from the University of Victoria in B.C., where he was an Associate Professor of Strategy and International Business and the Francis G. Winspear Scholar. Before entering academia, he spent nearly 15 years in private industry, including his last position as Vice President of Oxbow Carbon & Minerals, Inc., a US-based multinational with annual revenues of US\$350 million. He is a prolific and multiple-award-winning researcher whose studies primarily focus on the strategic management of multinational enterprises, with an emphasis on the organizational and performance effects of inter-firm networks, cross-border alliances and geographic location.

“Dr. Goerzen brings a wealth of knowledge and an impressive research background that is critical to our mission of developing outstanding leaders with a global perspective,” says Dean Saunders.

QUEEN'S SCHOOL OF BUSINESS breaks ground on \$40M expansion

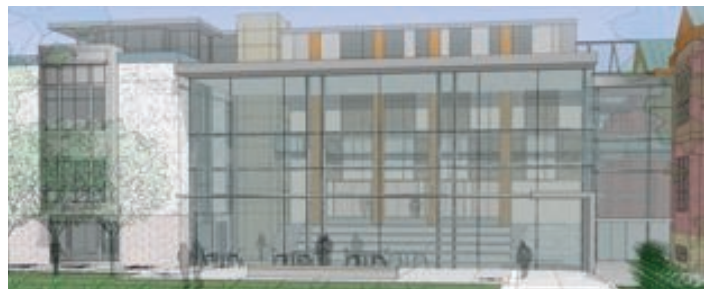
HISTORIC GOODES HALL RECEIVES ADDITIONAL \$5M PLEDGE FROM NAMESAKE

In response to increasing demand for enrolment, Goodes Hall is expanding! Queen's School of Business officially broke ground on a new 75,000-square-foot wing at a ceremony on May 29 during Spring Reunion celebrations on campus.

"This expansion will provide more great teaching, research and learning opportunities, while honouring our tradition of intimate learning," said Dean David Saunders. "By accommodating more of the best students, we will also expand our global footprint and alumni network, advancing our goal to be one of the most innovative and influential business schools in Canada and the world."

The Dean also acknowledged the School's many benefactors: BMO Financial Group (see story on page 39), Cadbury Adams Canada, Cara Operations and PricewaterhouseCoopers, our Commerce students who pledged \$1.2 million (see page 50), as well as three anonymous million-dollar-plus benefactors.

\$18.2 million of the \$22 million fundraising portion of the expansion was funded through donations from alumni and friends, with plans to raise the final \$3.8 million by January 2012. The remaining \$18 million for the \$40 million project will come from government and university funds related to program growth.



"This new wing will allow more of the most promising young people access to the vital business training that a Queen's education provides," said visionary donor Mel Goodes, whose lead gift of \$10 million in 2001 helped build Goodes Hall. The former chairman & CEO of Warner-Lambert Company, has pledged an additional \$5 million towards the new wing.



Queen's School of Business Commerce student Jason Liu, visionary donor Mel Goodes and Dean David Saunders at the ground breaking ceremony

Highlights of the new wing

- 7 new classrooms with the latest teaching technology
- 2 new research centres
- More offices and student common areas
- LEED-certified sustainable design features
- 5 levels, including underground parking

Watch us grow at goodeshallexpansion.com

Live Webcam



Take a virtual tour online



Lifetime Corporate and Foundation Donors

\$3,000,000+

BMO Financial Group

\$1,000,000 - \$2,999,999

Canadian Imperial Bank of Commerce
Bank of Nova Scotia
Warner-Lambert Canada Inc. & Warner-Lambert (U.S.)

\$500,000 - \$999,999

Cara Operations Limited of Ontario
Institute of Chartered Accountants of Ontario
Procter & Gamble Inc.
RBC Foundation

\$250,000 - \$499,999

Certified General Accountants of Ontario
Henry White Kinnear Foundation
Nexen Inc.
PricewaterhouseCoopers LLP
KPMG LLP & The KPMG Foundation
The Society of Management Accountants of Ontario

\$100,000 - \$249,999

Accenture Inc. & Accenture Charitable Foundation
Ambac Assurance Corp.
Bell Canada
Cadbury Adams Canada Inc.
Chubb Insurance Company of Canada
Cogeco Cable Inc.
Deloitte & Touche
Ernst & Young LLP
General Mills Foundation
Geoffrey H. Wood Foundation
HSBC Bank Canada
P & G Fund
Pfizer Consumer Group
Princess Street Club
Sun Life Financial Inc.
The John Dobson Foundation
Xerox Canada Inc.

\$50,000 - \$99,999

Asia Pacific Foundation of Canada
Financial Post
Goldman Sachs & Co.
Great-West Life Assurance Co.
Japan Foundation
Maple Leaf Global Foods Inc.
Margaret & Wallace McCain Foundation
Merrill Lynch Canada Inc.
Queen's Commerce Society
Royal Trust Company
Sceptre Investment Counsel Limited
The Calgary Foundation
The Felicia & Arnold Aaron Foundation
The Molson Donations Fund
Toronto-Dominion Bank
Unilever Canada Inc.

\$25,000 - \$49,999

Allard Foundation Ltd.
Burgundy Asset Management Ltd.
Corporate Insurance Group Ltd.
Export Development Canada
General Electric Canada Inc.
I T A C
IBM Canada Ltd.
Imperial Oil Foundation
McKinsey & Company Inc.
Mercer (Canada) Ltd.
Monitor Company
Nissan Canada
Nortel Networks Corporation
PepsiCo Foundation
SeaBoard Group
Shell Canada Limited
The Ralph M. Barford Foundation



From left, BMO's Lloyd Fleming, Kathryn Wizinsky, Kevin Reid, Dean David Saunders, Eric Tripp (BMO), Louis Tsilivis, Forrest Lothian & Logan Roberge

BMO Financial Group

DONATES \$2 MILLION FOR EXPANSION OF GOODES HALL

Queen's School of Business celebrated a \$2 million gift from BMO Financial Group in support of the expansion of Goodes Hall in January. In recognition of BMO's support, the Goodes Hall Atrium was renamed the BMO Financial Group Atrium. A group of Commerce student leaders helped to unveil the new signage at the ceremony that brought together students, faculty, staff and BMO representatives.

The donation was presented by **Eric Tripp, BA'81**, President of BMO Capital Markets, to Principal **Daniel Woolf** and Dean **David Saunders**.

"We are extremely proud of our longstanding relationship with Queen's and also our deep commitment to education," said Mr. Tripp. "Of the nearly \$50 million in sponsorships

and donations that BMO Financial Group delivers each year in Canada, close to one-third goes toward education."

David Saunders expressed the School's appreciation of BMO's generosity. "We are very thankful for BMO's continued support of QSB and our mission to develop outstanding leaders."

Queen's University and BMO Financial Group have been working together since 1867, one of the longest-running business relationships in Canada. In addition to BMO's support of the new wing at QSB, the bank has also established a professorship recognizing excellence in Finance, as well as the Bank of Montreal National Award, a student award recognizing academic excellence, leadership and community involvement.

Annual Giving



Why i Pledge

"When I chose Queen's Commerce, I made a promise to myself that I would get involved to better the school in every way I could, and in return, I would receive from the school one of the best undergraduate business educations in Canada. I believe that in order to continue improving the school and to preserve its reputation as one of the leading education establishments in our country, it is important to help it grow in any way possible. I pledge because even though I may only be at the school for another three years, the Queen's School of Business and Goodes Hall will always be a part of who I am."

-Nicola Plummer, COMM-13



Recognizing Annual Giving

The following list recognizes donors whose cash gifts or pledge payments to Queen's School of Business were made between **May 1, 2009** and **April 30, 2010**.

Please note:

- Many Queen's School of Business alumni direct their gifts to support other programs and initiatives at Queen's University. These contributions are recognized annually in the University's *Report of Contributions*.
- Total class donations are published only when there are at least five donors from that program/year.

All QSB donors are eligible for membership in one of Queen's annual appreciation societies based on their giving per fiscal year, as follows:

Grant Hall Society

Diamond Level — \$10,000 or more
Sapphire Level — \$5,000 to \$9,999
Limestone Level — \$1,000 to \$4,999

Summerhill Society

\$500 to \$999

Royal Charter Society

\$250 to \$499

Cha Gheill Society

\$100 to \$249 (recent graduates)

Royal Legacy Society

Bequests by will, charitable gift annuities, life insurance, real estate, registered funds and charitable trusts.

QSB's generous supporters who have contributed more than \$100,000, cumulatively, are recognized on the School's **Benefactor Wall** at the following levels:

Level 1 — \$10 Million or more
Level 2 — \$5 Million to \$9,999,999
Level 3 — \$1 Million to \$4,999,999
Level 4 — \$500,000 to \$999,999
Level 5 — \$250,000 to \$499,999
Level 6 — \$100,000 to \$249,999

In addition, those whose cumulative gifts have exceeded \$5 Million are recognized on QSB's **Visionary Wall** at Goodes Hall.

Every effort is made to ensure the accuracy of this list of donors. However, errors occasionally occur. If your name has been omitted, misspelled or incorrectly listed, please contact Tiffany Pauls at TPauls@business.queensu.ca or 1.877.533.2330.

Commerce Giving

BCom'34

Kenneth Heath

BCom'43

Donald Daly

BCom'47

Anonymous

BCom'48

Michael Curry
John Purkis
Gerald Sutton
Joseph Viner

BCom'49

Montgomery Sennett

BCom'50

Patrick Callery
Mary Wallace
Herbert Wyman

BCom'51

Robert A. F. Montgomery
James White

BCom'53

John Bickerton
Ian Fraser
Nicholas Seiler
Richard Stackhouse

BCom'54

Donald Mackenzie
Myron Rudiak
William Stokes
Frederick Troop

BCom'56

Kitty Green

BCom'57

Melvin Goodes
George Moffat
Donald Sobey

BCom'58

Glenn Drew
Chris Trevor

BCom'59

Donald McGrath

BCom'61

Graham McCallum
Douglas Tigert

BCom'62

John Nicolson

BCom'64

Total Giving: \$21,195
Wayne Ashford
David Garth
Milton Hess
Roderick McLeod
Wayne Musselman
John D. Takach
David A. Wilson

BCom'65

Peter Stuart

BCom'66

Total Giving: \$10,921
Ronald Bisset
Mervin Daub
John Gordon
Thomas Kinnear
Stuart Proudfoot

BCom'67

David Crossley
Thomas O'Neill

BCom'69

Daniel Atkinson
Richard Hale
Wayne Hill
Robert Millar

BCom'70

John MacKay
John Stankiewicz
Anonymous

BCom'71

John Connell
Stanley Gibson
James Gledhill

BCom'72

Total Giving: \$4,750
Paul Benson
Alevia Colwell
Robert Colwell
Robert Cuthbertson
John Halliwell
Thomas James
Kenneth Low

BCom'73

William McLean
David Morton
Robert Neale
William Wilson

BCom'74

Pamela Casey
Michael Kassner
Mary McGurran
Barbara McLean

BCom'75

Total Giving: \$194,898
Wayne Anderson
Arthur Cunningham
Douglas Dethy
Glenn Lucas
Michael McIntyre
Deborah McKay
Estate of Sylvia Morawetz
Gerald Peden
Bruce Raby
Kenneth Singer
Tony Woodward
Anonymous

BCom'76

Total Giving: \$25,497
Peter Benson
Chris Clark
Margaret Eades
Tony Hooper
David Pouppore
Anne Riley
Derek Riley
Jill Rowan
Katherine Thomas
Gary Thompson
Anonymous (3)

BCom'77

Total Giving: \$12,870
Bartley Bull
Michael Forsayeth
Ian Hendry
Mark Johnston
David McIlquham
W Bradley Murdoch
Beverley Paquette
Clare Prendergast
Michael Shaw
Katie Wallace
Anonymous (2)

A treasured classmate honoured

FUTURE STUDENTS INDEBTED TO CHRISTINE SINCLAIR AND COMMERCE '81



Christine (Smith) Sinclair, BCom'81, was a marathon runner. She loved nothing better than running the dirt roads on summer days at her cottage on Lake Skootamatta, just north of Kingston. Only two years after her first marathon in 1998, she ran the internationally prestigious Boston Marathon, and in 2001 tackled the Washington Marine Corps Marathon.

The perseverance and patience she brought to running marathons were traits she had long demonstrated, including during her Commerce studies. As classmate **Jane Wiley** recalls, "Her interest in marathons was reflective of her overall passion for life and her infectious enthusiasm. Chris was diligent about her studies, but was also very involved in the wider Queen's community. She was on the Commerce Society's executive and was a key organizer of many events and activities. She had a steely determination to achieve and get results, but did everything with a huge smile on her face and what I'll always remember as a 'smile in her eyes.' Her aim was to make the most out of her life – and she did."

She also made her mark in her chosen field of accounting as a Partner at PricewaterhouseCoopers and later Ernst & Young, as a Fellow of the Institute of Chartered Accountants, and later

as its elected Chair for Ontario (ICAO). Her valued community contributions included service as Director and Governor of Bridgepoint Health and finance committee member for Toronto's Fred Victor Centre, dedicated to improving the quality of life for low-income people. And she was a long-time supporter of Queen's, specifically the School of Business, to which she made regular gifts in support of programs and student-focused initiatives.

The Washington marathon would be Christine's last. In 2003, after experiencing a range of puzzling symptoms, she was diagnosed with Amyotrophic Lateral Sclerosis (ALS, also known as Lou Gehrig's Disease). This severe and incurable neurological disease weakens muscles and eventually affects victims' ability to control the muscles needed to speak, eat and breathe.

When Commerce'81 friends **Iain Bruce** and **Jane Wiley** learned of her condition, they rallied their classmates to a cause they supported whole-heartedly: a student award in Christine's honour, to benefit "an upper-year student who best exemplifies the characteristics of leadership, academic excellence and general contribution to student life within the Commerce Program."

The 2009 recipient was **Michael Portner Gartke, BCom'10**, who received notification of the award as he was entering his fourth year. "I was checking on the balance of my tuition fees when I saw I had received the \$1,000 Christine Smith Award. It really made a difference, not only helping with my expenses, but also giving me a boost by recognizing my academic and extra-curricular achievements."

Michael certainly fit the Award's criteria. He excelled academically, was a member of the varsity track team, and also served as both Chief Electoral Officer and Speaker of the Commerce Society's Assembly. He competed in national and international business case competitions, notably as a member of the Queen's Commerce team that won the inaugural National University of Singapore competition last September. His biggest passion, though, was debating. From first through fourth year, he was a stalwart member of Queen's Debating Union (QDU), competing nationally and internationally. He reached the pinnacle of competition as one of three QDU team members who travelled to Istanbul, Turkey, in December for the World Universities Debating Championship. He put his award towards his airfare to compete in the championships – a once-in-a-lifetime opportunity.

After graduating at the top of his class in May, he juggled four summer jobs at Queen's before heading to Toronto to

study Law. Sadly, Michael never had the opportunity to meet Christine Sinclair. Before succumbing to her illness on April 4, 2009, just four months before he received the award, she left a sizeable legacy gift to the Commerce'81 Scholarship Fund. "If I'd had the chance to meet her, I would have told her how grateful I am", says Michael. "It sounds as though Christine was a tremendous leader and someone I definitely would have looked up to and admired. I would have thanked her for her many gifts to QSB and would have expressed my desire to someday support future students in the way in which she and her classmates supported me."

Christine's legacy also lives on in other honours: The Christine E. Sinclair Leadership Award established by the ICAO to honour young CAs for their voluntary community leadership; Bridgepoint Health's Christine Sinclair Ambulatory Care Centre; and the PricewaterhouseCoopers/Christine Sinclair Scholarship for a female student entering fourth-year Commerce at Queen's.

For information on contributing to the Christine Smith Award, contact Sarah Roth at SRoth@business.queensu.ca or 800.267.7837.



Michael Portner Gartke

Commerce Giving continued

BCom'78

Total Giving: \$84,453

Jack Alvo
Julia Barker
Richard Bradeen
Marian Burdsall
Ronald Butler
Suzanne Carty
Guy Casgrain
David Clare
Michael Dawson
Mark DesLauriers
Michael Gilbert
Jerry Jackson
Michael Kehoe
Peter Kingston
Thomas Latimer
Joseph Latour
Ross Markell
Francis McAuley
John Nixon
Genie Orton
Ronald Reiche
Bruce Runciman
Timothy Runge
Douglas Sinclair
Penny Somerville
Gia Steffensen
David Steiner
Brenda Wagar
David Wheeler
John Wild
Geoffrey Wilson
Anonymous (2)

BCom'79

Total Giving: \$64,642

M. Shân Atkins
Dave Brining
David Court
Stephen Graham
Gordon Hendren
Thomas Miller
Peter Myers
Joanne Pearce
Marabeth Sharp
M. Christine Zufelt
Anonymous

BCom'80

Total Giving: \$1,237,994

Michael Borden
James Bracken
Todd Corradetti
Robert Cronin
Sally P Garner
John Gleeson
David Holland
Christopher Paddison
Nancy Powis
Vilborg Wilson
Anonymous (2)

BCom'81

Total Giving: \$205,294

Catherine Bond
Richard Bond
Nicholas Brearton
Iain Bruce
Andrew Chisholm

Christina Dargan
James Garner
Bonnie Golomb
Janet Hoadley-Redgwell
Peter Mackenzie
Carolyn Maynes
Steven Maynes
Frederick Mifflin
Andrew Mingay
Geoffrey Reeves
Estate of Christine Sinclair
Gary Solway
Lisa Taylor
Robert Thorpe
Margaret Warren
Jane Wiley
Jay Wright
Norman Wright
Anonymous

BCom'82

Total Giving: \$67,047

David Beatty
Carol Devenny
Geoffrey Gouinlock
Frederick Ivimey
Caroline Jellinck
Nancy Jenkinson
Stephen Martin
Tracy Martin
Grant McDonald
Catherine McIntosh
Douglas McIntosh
John Quattrocchi
Daniel Saikaley

David Toyne
Larry Walsh
Grant Wickes
Randall Williamson
Mary Wilson Trider
Anonymous

BCom'83

Total Giving: \$29,405

Gregory Bell
Richard Dainard
Joseph Faello
Ian Friendly
John A Hallward
Brian Hogan
Ross Jeffery
Mary Kelly
Paul Lawson
Leslie Reynolds
Mark Schweitzer
Edward Speal
Anonymous (2)

BCom'84

Total Giving: \$26,851

Adele Arsenault
Michael Bolitho
Christopher Carl
Jeffrey Carney
Christopher Climo
Daniel Dickinson
Sharon Driscoll
Carol Hood
D'Arcy LeNeveu
Marc Morisset

Iain Morton
Shawna O'Grady
Lisa O'Toole
Cynthia Phillips
David Richardson
Susan Rooks
Ardleigh Young
Anonymous (3)

BCom'85

Total Giving: \$2,225

Scott Clark
Lynn Cruickshank
David Dobell
David Forster
Peter Goldie
James Houghton
John Newcombe

BCom'86

Total Giving: \$30,308

Carolyn Brook
Susan Campbell
Carolyn Carney
Patricia Ewen
Susan Fleming
Peter Foyston
Grant Lawrence
Brian Lenahan
Michelle Lenahan
Carole Matear
Charles Powis
Michael Sinclair
Anonymous (4)

BCom'87

Total Giving: \$3,000

Hugh Corbett
George MacDonald
Janis Pasco
Robin Rankin
Grant Rasmussen
Mona Rasmussen
Raymond Stanton
Victor Teves
Anonymous

BCom'88

Stephani Kingsmill
Daniel Matte
Samuel Pollock
Ralph Rosseuscher

BCom'89

Total Giving: \$94,863

Patrick Baldwin
Gregory Dart
Andrew Durnford
Jeanette Hepburn
Donald Linsdell
Sandra Linsdell
Steven Millan
Paul Pancham
Anonymous