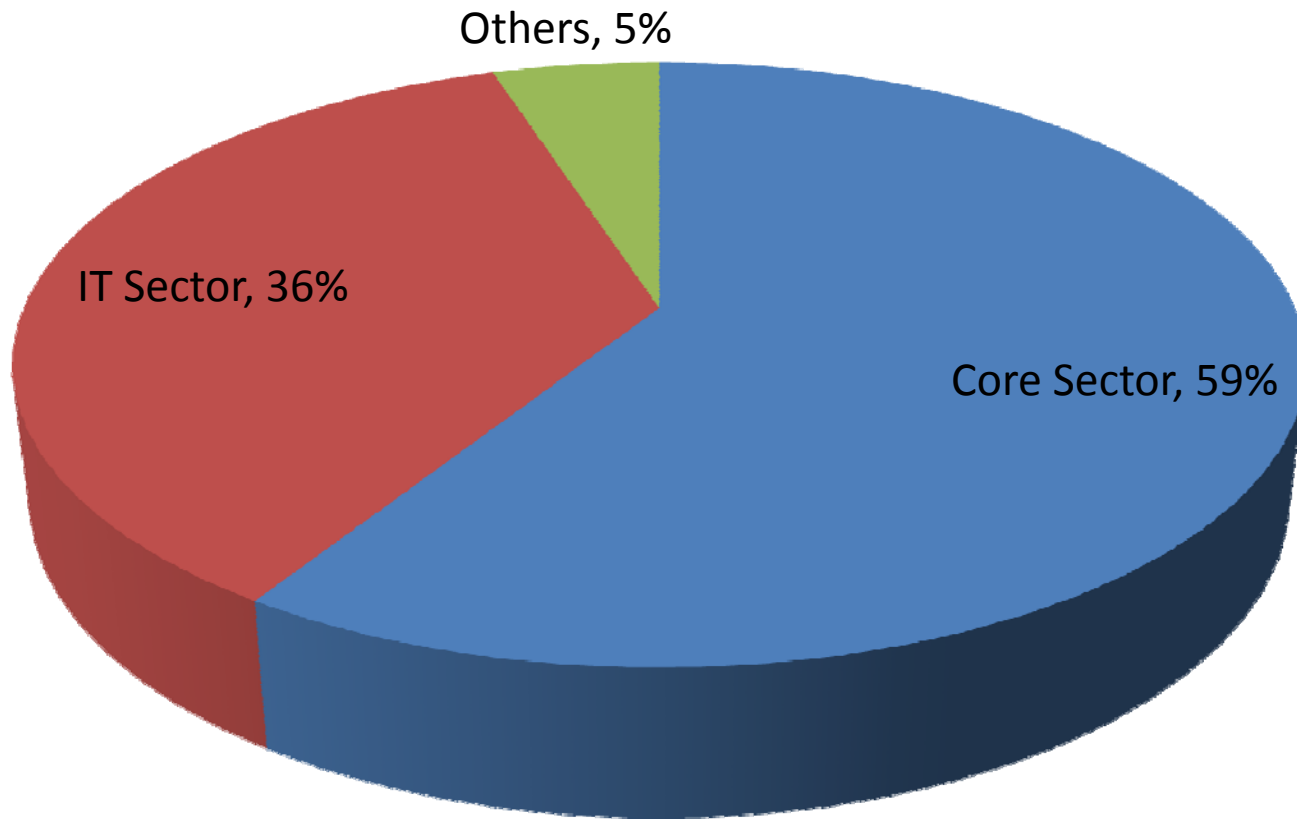
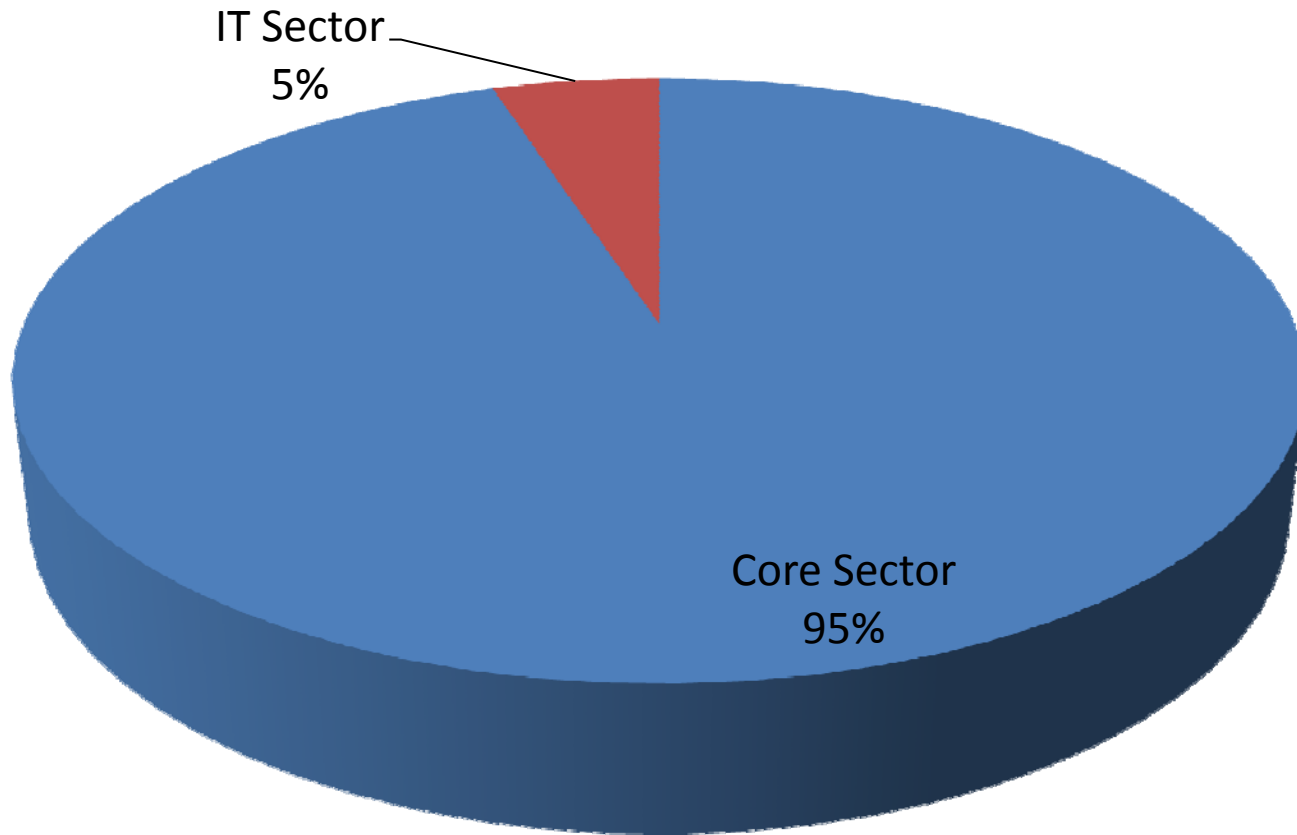


**PLACEMENT
HIGHLIGHTS
2009-2010**

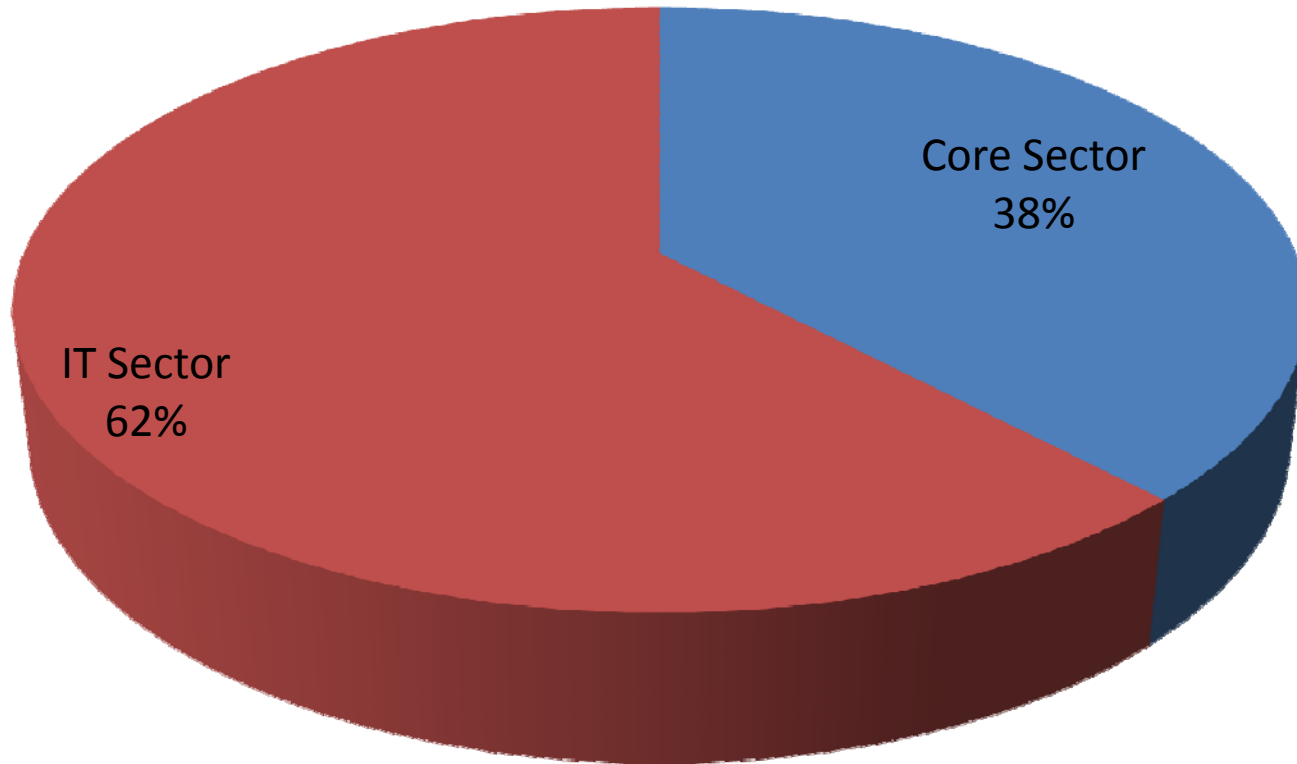
Division of Jobs



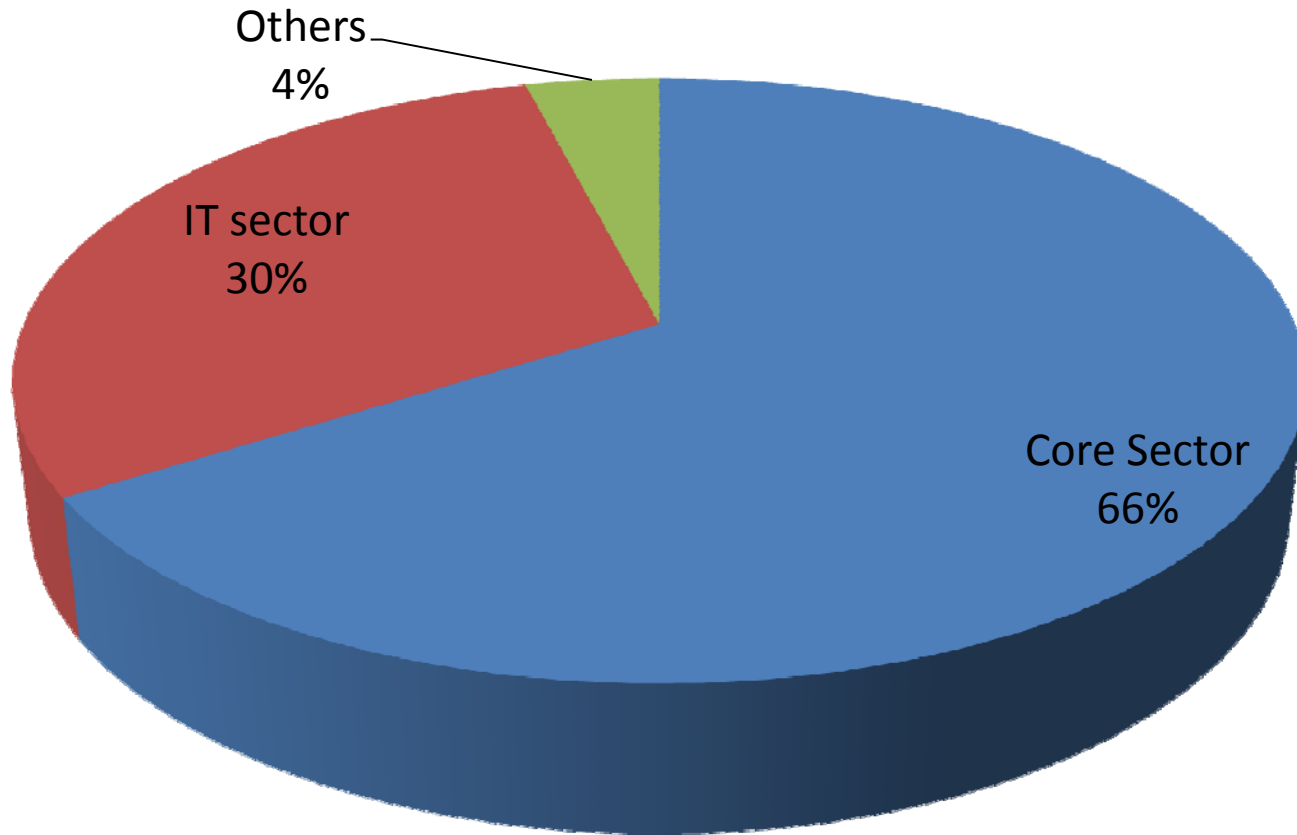
Division of Jobs Civil Engineering



Division of Jobs Computer Engineering

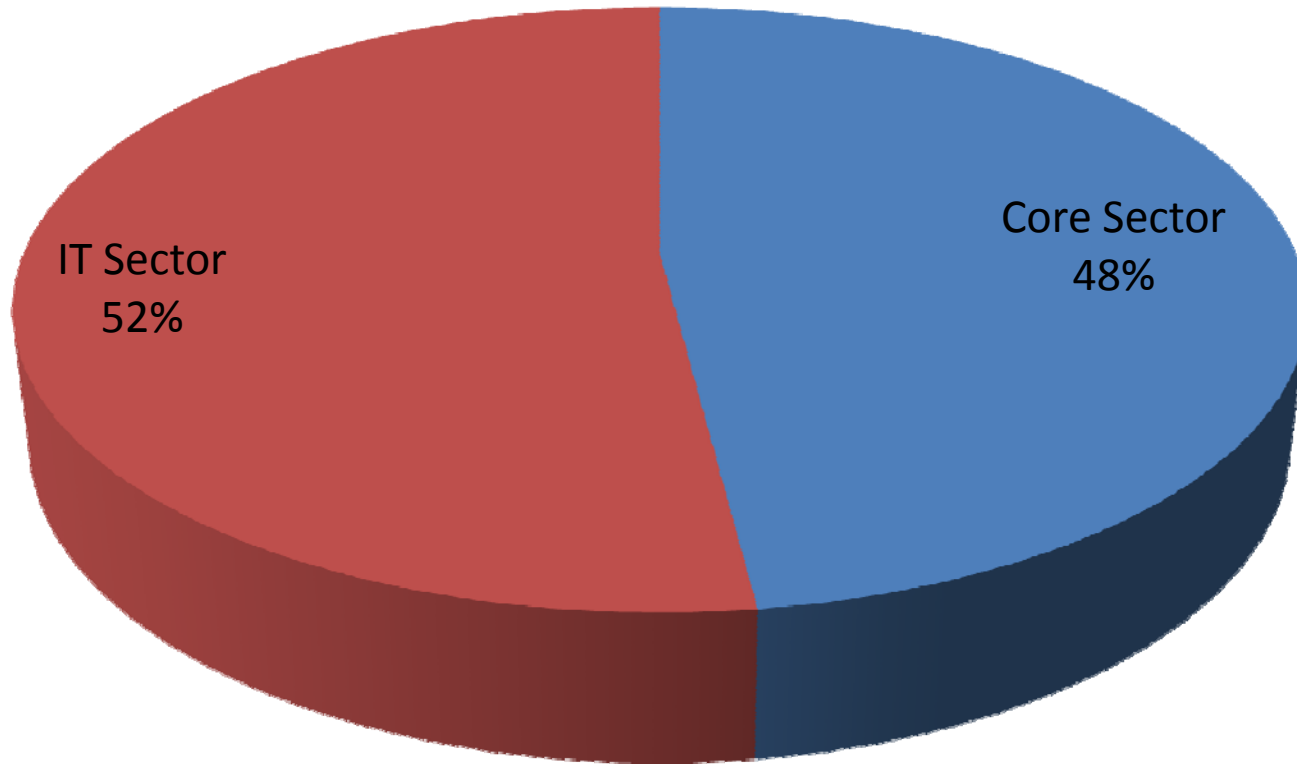


Division of Jobs Electrical Engineering

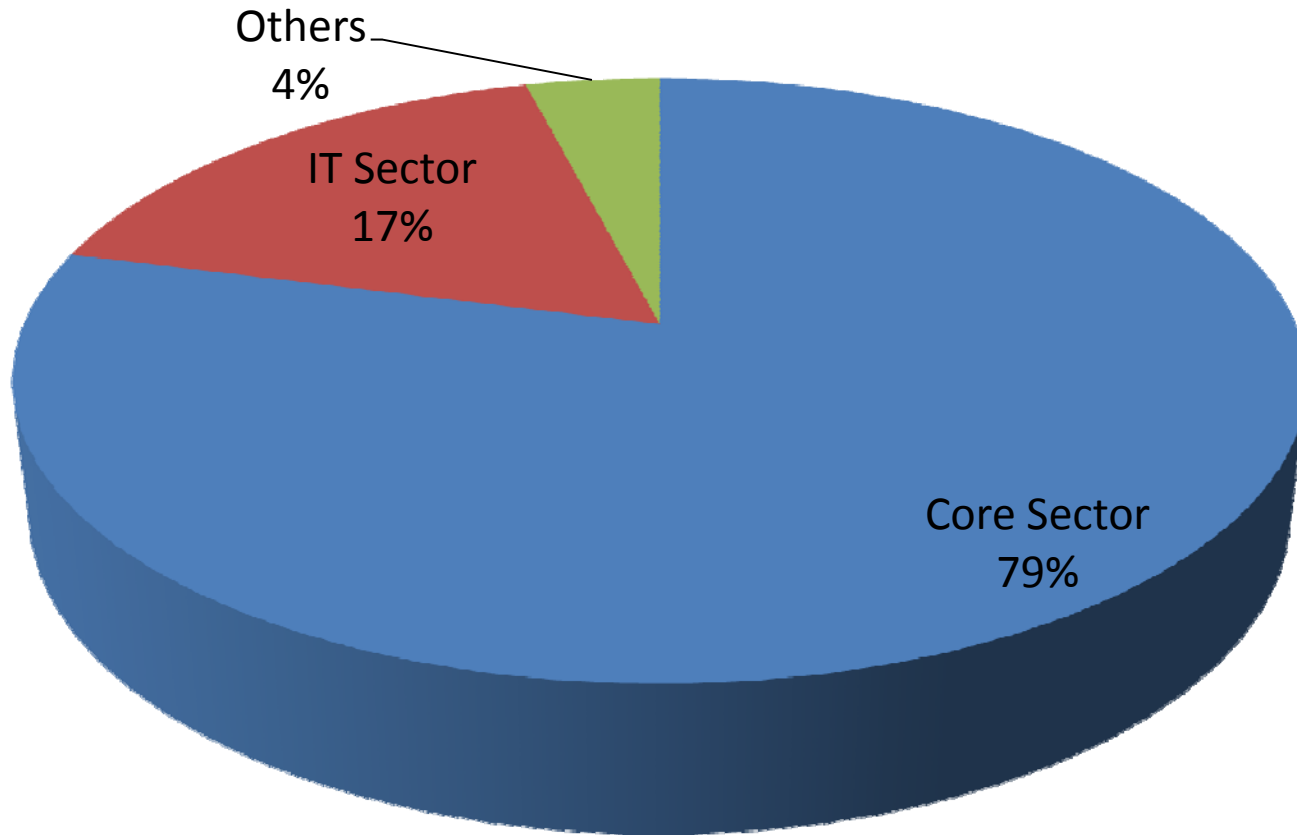


Division of Jobs

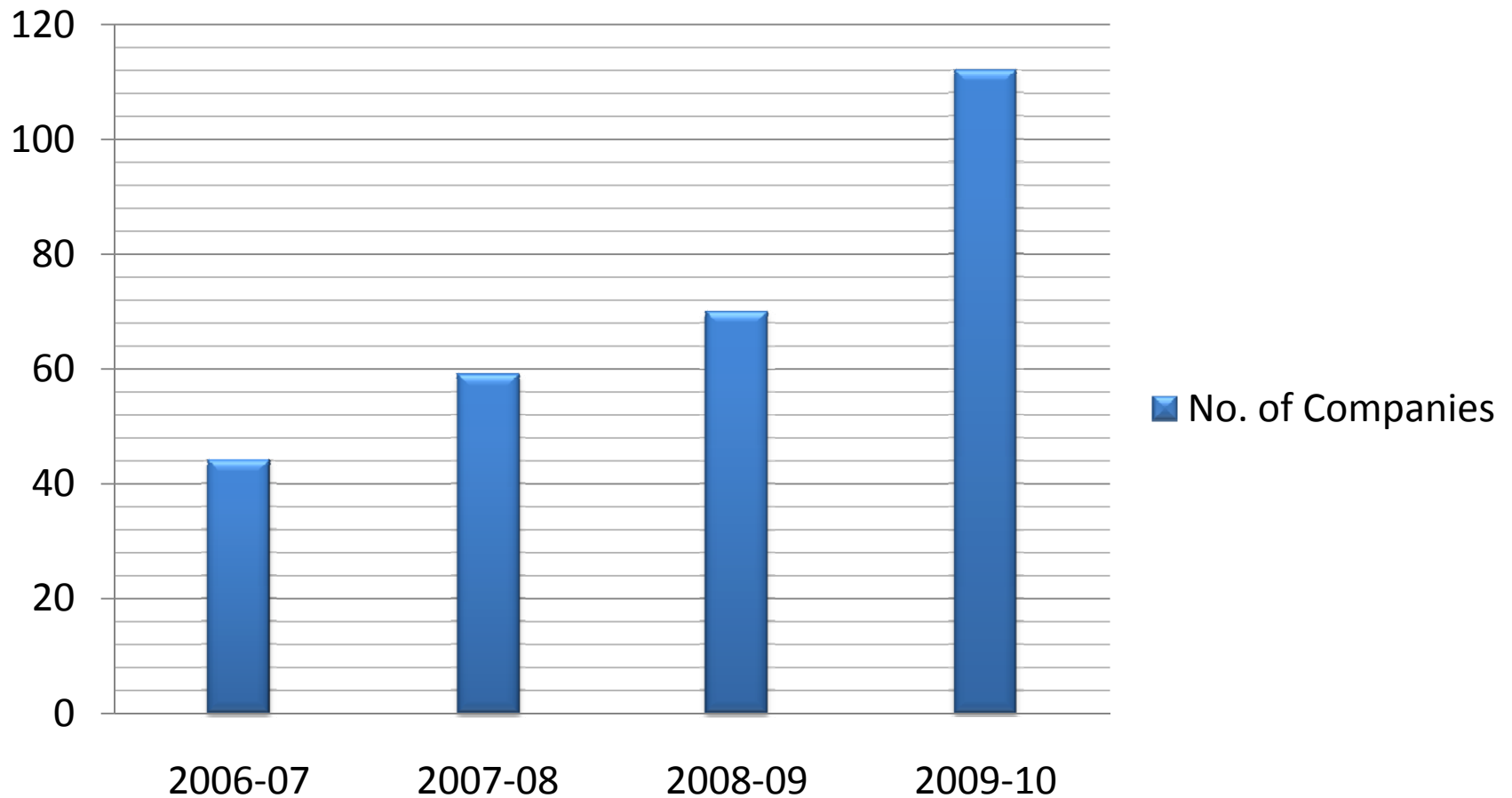
Electronics and Communication
Engineering



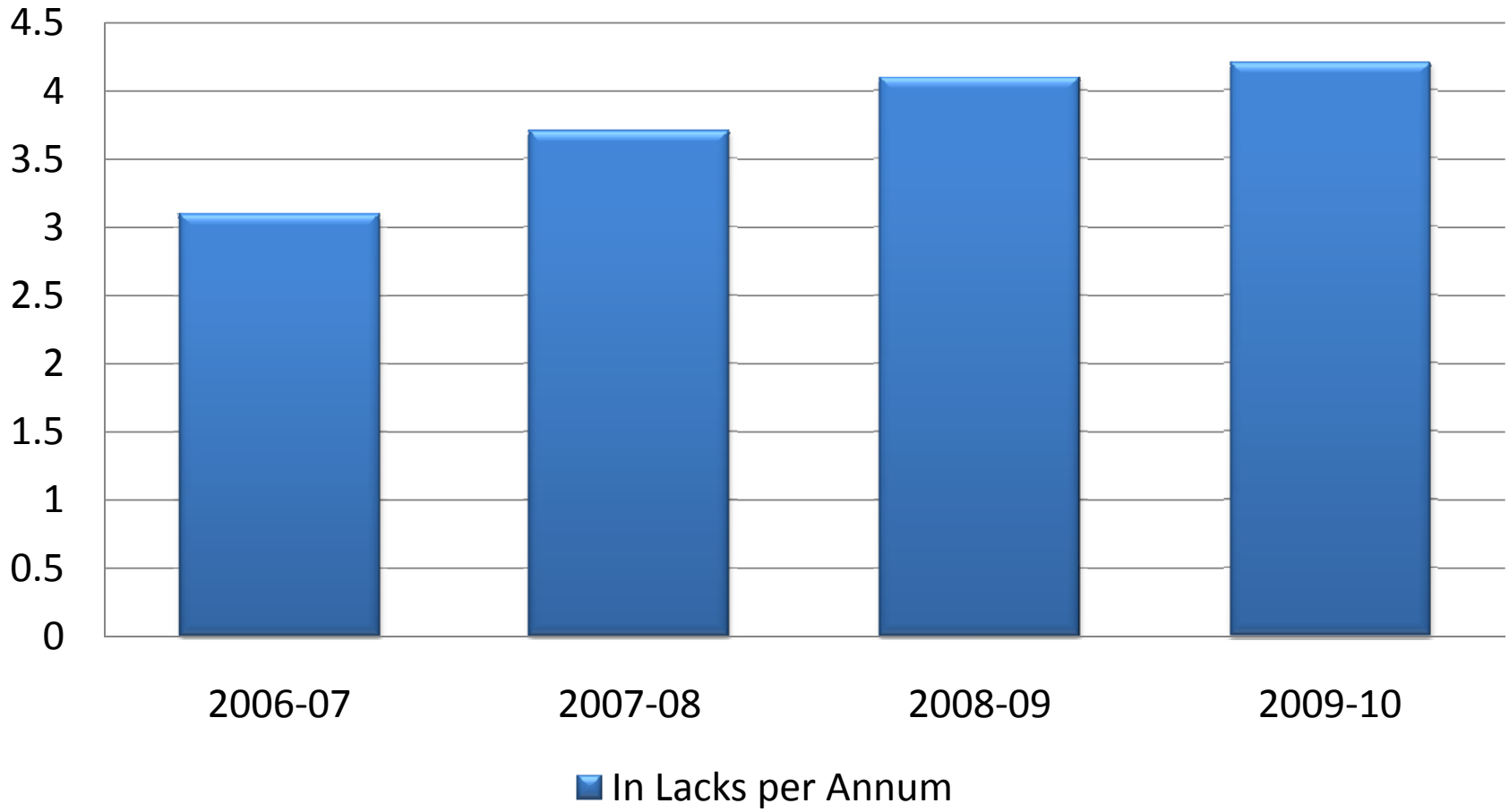
Division of Jobs Mechanical Engineering



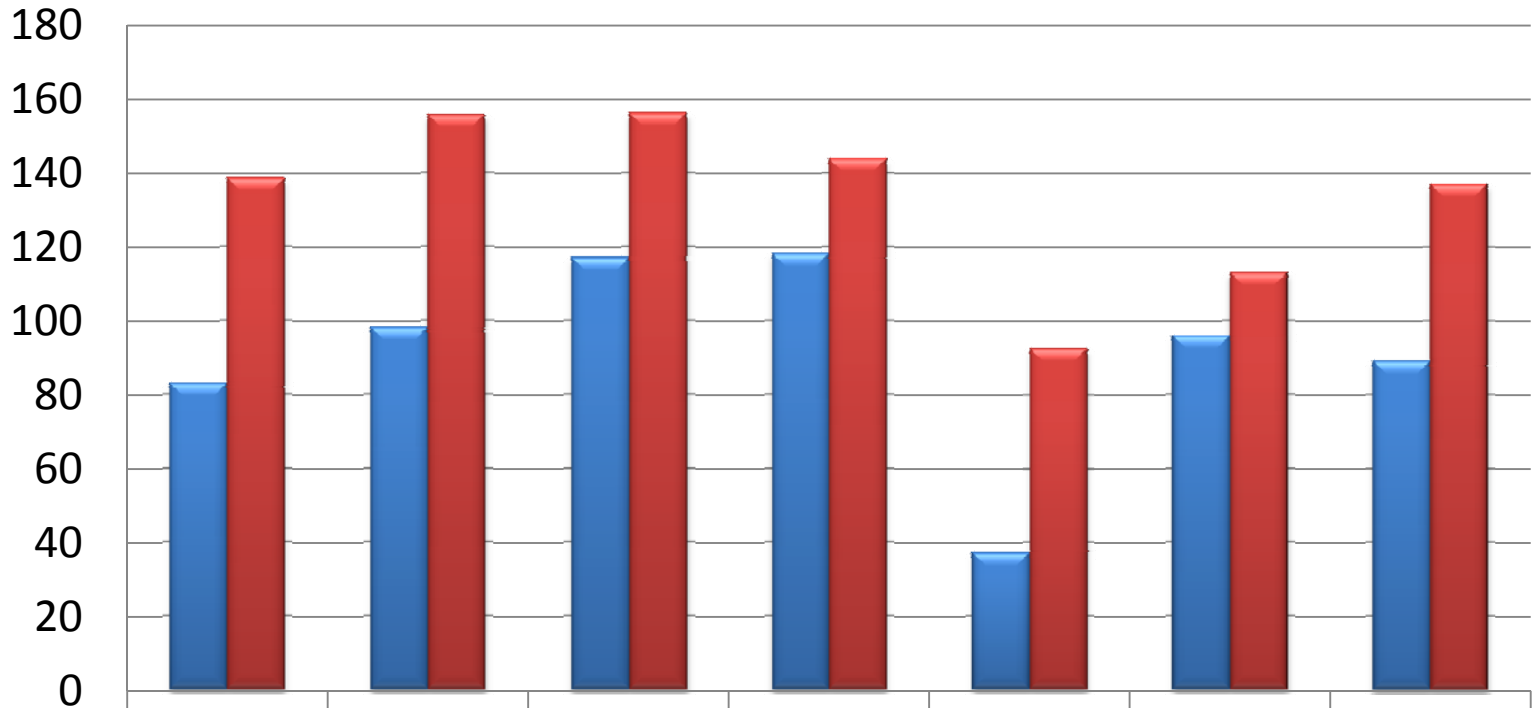
No. of Companies (Year Wise)



Avg. Package Company (year wise)



Branch Wise Job Distribution



■ Total Jobs

83

98

117

118

37

96

89

■ %age

138

156

156

144

93

113

137

Recruiters for the batch 2009-10

- AbsolutData
- ACC
- Accenture
- Adani Power
- Adobe
- Akash Institute
- Amdocs
- Applied Materials
- ARI
- Aricent
- Ashok Leyland
- Atos Origin
- Balmer Lawrie
- Bata
- BEL
- Belzabar Software
- BILT
- Birlasoft
- Caparo
- CCCL
- C & C infrastructure
- CES
- CGI
- Compro
- Comvault
- coreEL technologies
- CSC
- DRDO
- DSCL
- EIL
- Energy Infratech
- Envirogeo
- Era Group
- Ericson
- Escorts
- Essar
- EXL Inductis
- Fiserv
- Geiper
- Google
- Grail Research
- Grasim Industries
- GS Cons.
- Hero Honda
- Honda2Wheelers
- HPCL
- HSCC
- I3C
- IBM
- Idea
- ILFS Technologies
- India Bulls
- *Indian Army*
- *Indian Navy*
- Interra Systems
- IOCL
- IOTL
- ITD Cementation
- Jaypee Power
- JSL
- Jyoti structure
- *KEC International*
- Kribhco
- L&T
- LG
- LnT ECC
- LPU
- Mahindra & Mahindra
- MAQ
- *Maruti*
- *Mecon*
- MediaTek
- Mindfire
- Minda Group
- Mobicules
- Mu-Sigma
- Nagarro
- NBC
- NDPL
- nSys
- *NTPC*
- PGCIL
- Powerwave
- ProcessMAP
- Punj Llyod
- Rave Technologies
- RBS
- Samsung
- Samsung SEL
- Sapient
- SimplexInfra
- *SJVNL*
- SKEC
- SMS
- SRF
- Subros
- Subros-Fibcom/Prima Tel
- Talwar N Talwar
- TATA Motors
- TataTeleServices
- TCE
- TCIL
- TCS
- Tech Mahindra
- Technip
- *Telcon*
- Vedanta
- Virginia Transformer
- Whirlpool
- Winshuttle
- *ZS Associates*
- ZTE