

**Design, installation  
and commissioning**

**Sewage and storm water pumping systems**



Our extensive range of pump systems caters for sewage and drainage applications throughout the UK

Approved and accredited contractors

Project partners assisting architects and engineers

Packaged systems for private developments



Best systems from leading pump manufacturers

Pre-assembled for fast and easy installation

Complete design and project management service

# Design, installation and commissioning

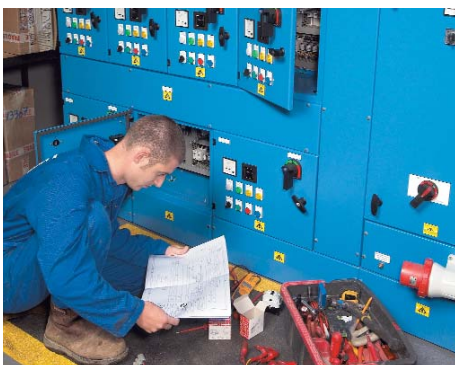
## Sewage and storm water pumping systems



PIMS Group offers one of the most extensive ranges of pump systems for all your sewage and drainage applications. We operate throughout the UK and select equipment from a wide range of reputable manufacturers, tailoring the equipment to suit the individual requirements of each project.

### Extensive expertise

The group has acquired extensive expertise over nearly 40 years and we are recognised as leaders in our field. We are approved contractors to many in the UK water utilities sector, offering a comprehensive service, including



assessment of site viability, design, sizing, selecting and installing equipment for sewage and storm water handling. Our group has an established reputation for successful

### Comprehensive service covers provision and maintenance of sewage and storm water systems for all sectors

station refurbishment and conversions for the water industry. We undertake complete project management, station design, equipment selection and programming, including any civil engineering needs.

### Project partners

In addition, we supply systems to the civil, construction, retail, commercial, housing and local authority sectors, working as partners on many projects and often advising consulting engineers and architects. We work to the SFA (Sewers for Adoption) guidelines for pumping stations and liaise with the appropriate water authority at an early stage in a project. We also offer an extensive range of package pump stations, primarily used for developments where the station remains in private ownership and

### PIMS systems

#### Our systems include:

- Solutions designed with pumps by leading manufacturers – the best pump for every job
- Pre-assembled pipework – for fast, easy installation
- Electrical controls – with integrated alarm system

#### Benefits of our package:

- Complies with Building Regulations
- High quality, competitive prices
- Fast, efficient, UK-wide deliveries
- Customer support 24/7
- Maintenance contracts

would generally not be adopted by a water utility.

### Peace of mind

Working with many of the UK's Top 350 companies, we have developed a Total Asset Management (TAM) programme which delivers peace of mind and certainty to design and installation of sewage and drainage systems on large commercial developments.

Customers in large new build projects as diverse as food retailers, football stadia, airports, shopping centres and industrial parks all benefit from the many years of design experience within PIMS which will not only deliver a reliable and cost-effective pumping solution, but in many instances significantly reduce overall build costs on the project.



## Sewage and storm water pumping systems

- Design, installation and commissioning
- Package pump stations
- Maintenance and emergency call-out services



[www.pimsgroup.co.uk/pimspumps](http://www.pimsgroup.co.uk/pimspumps)



[www.pimsgroup.co.uk/pimsservices](http://www.pimsgroup.co.uk/pimsservices)



## Sewers and drains

- Emergency response and regular service contracts
- Waste management: septic tanks, commercial and industrial waste
- CCTV surveys, pressure jetting, pipe re-lining and drain repairs



[www.pimsgroup.co.uk/comet](http://www.pimsgroup.co.uk/comet)



## Sewage treatment plants

- Design, installation, call-out services and maintenance
- Ensure compliance with discharge consent limits
- Automatic alarm systems

### Oil interceptors

- Maintenance of Class 1 and 2 Systems
- Ensure compliance to Environment Agency PPG3 guidelines
- Automatic alarm systems



[www.pimsgroup.co.uk/hydroserve](http://www.pimsgroup.co.uk/hydroserve)

## Emergency call-out



**Hotline**  
**0800 009 3611**

