

Physics and Chemistry

Ver D

1. A simple pendulum has a period T inside a lift when it is stationary. The lift is accelerated upwards with constant acceleration ' a '. The period
 - a) decreases
 - b) increases
 - c) remains same
 - d) becomes infinite

2. 90dB sound is ' x ' times more intense than 40dB sound, then x is
 - a) 5
 - b) 50
 - c) 10^5
 - d) 500

3. A star is moving away from the Earth with speed V . Change in wavelength ($d\lambda$) observed on Earth is
 - a) $\lambda V/C$
 - b) $\lambda V/(C+V)$
 - c) $\lambda C/(C+V)$
 - d) $\lambda C/V$

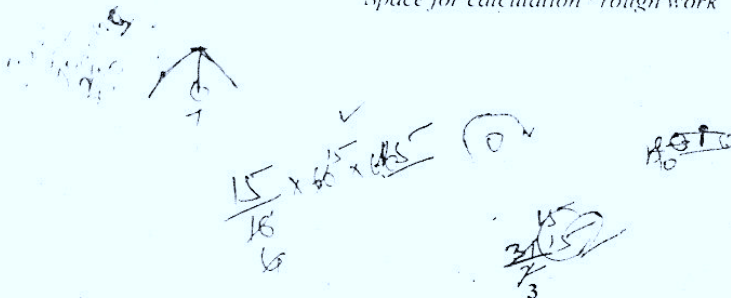
4. An open pipe emits a fundamental frequency n_0 when it emits the 3rd harmonic, the pipe can accommodate
 - a) 2 nodes 2 antinodes
 - b) 3 nodes 4 antinodes
 - c) 3 nodes 3 antinodes
 - d) 1 node 2 antinodes

5. In an adiabatic process
 - a) temperature remains constant
 - b) pressure remains constant
 - c) volume remains constant
 - d) there is no transfer of heat.

6. Carnot's heat engine takes 300J of heat from a source at 627°C and gives some part of it to sink at 27°C . Work done by engine in one cycle is
 - a) 200J
 - b) 300J
 - c) 150J
 - d) 120J

7. $15/16^{\text{th}}$ of a radioactive sample disintegrates in 2 hrs. Mean life of radioactive sample is approximately,
 - a) 30 min
 - b) 43 min
 - c) 21 min
 - d) 15min

Space for calculation / rough work



$\frac{15}{16} \times 60 \times 60 = 5400$
 $\frac{5400}{3} = 1800$
 $\frac{1800}{3} = 600$

Physics and Chemistry

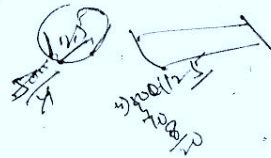
Ve/physics an

8. Clear images of soft tissues can be well studied using
 a) MRI
 b) X-rays
 ✓ c) Ultrasonics
 d) I.R rays
9. Particles which are not composite and hence truly elementary are
 a) mesons
 b) protons
 c) neutrons
 ✓ d) leptons
10. A logic gate whose output will be in logic 0 state only when all inputs are in logic 1 state is called
 a) AND
 ✓ b) OR
 c) NOR
 d) NAND
11. n type and p type semiconductors can be obtained by doping pure silicon respectively with
 a) Arsenic Phosphorous
 b) Indium Aluminium
 c) Phosphorous Indium
 ✓ d) Aluminium Boron
12. In a CE amplifier $\beta=50$, $R_L=4K\Omega$, $R_i=500\Omega$. Power gain of the amplifier is
 a) 2×10^4
 ✓ b) 2×10^3
 c) 2×10^1
 d) 2×10^1
13. Electrons are excited from $n=1$ to $n=4$ state. During downward transitions, possible number of spectral lines observed in Balmer series is
 a) 4
 ✓ b) 3
 c) 2
 d) 1
14. IR region lies between
 a) radio waves and microwave regions
 b) microwaves and visible
 c) visible and UV region
 ✓ d) UV rays and X-ray region.
5. A proton λ_n will be
 a) 2:1
 ✓ b) $2\sqrt{2}$
 c) 4:1
 d) 1:2
6. Raman
 a) inci.
 b) inci.
 c) res.
 d) mol
7. C^{14} and
 a) iso.
 b) iso.
 ✓ c) iso.
 d) mi.
8. In an int.
 the ratio
 a) 3:1
 ✓ b) 9:1
 c) 2:1
 d) 4:1
19. In Young
 a) d^2
 b) d^2
 c) D
 d) $2d$
20. Newto
 a) eq
 ✓ b) eq
 c) a
 d) a
21. It is di
 a) li
 ✓ b) sp
 c) li
 d) v.

Space for calculation / rough work

$R_L = 4K, R_i = 500\Omega$

$R_i = 500\Omega$

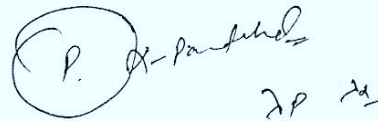
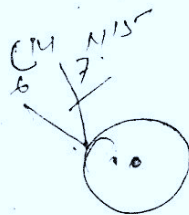


Physics and Chemistry

Ver D

5. A proton and an alpha particle are subjected to same potential difference V . Their de-Broglie wavelengths λ_p will be in the ratio
- 2:1
 - $2\sqrt{2}:1$
 - 4:1
 - 1:2
6. 'Raman Shift' depends on
- incident wavelength
 - incident intensity
 - resolving power of the spectrograph used
 - molecular energy levels of the scatterer.
7. ${}^6\text{C}^{14}$ and ${}^{14}\text{N}^{15}$ are the examples of
- isotopes
 - isobars
 - isotones
 - mirror nuclei
8. In an interference experiment, intensity ratio at the bright to dark fringe is 9:1. Amplitudes of interfering waves are in the ratio
- 3:1
 - 9:1
 - 2:1
 - 4:1
19. In Young's double slit experiment, 1st dark fringe occurs directly opposite to a slit. Wavelength of light used is
- d^2/D
 - d/D
 - D^2/d
 - $2d^2/D$
20. Newton's ring pattern in reflected system, viewed under white light consists of
- equally spaced bright and dark bands with central dark spot
 - equally spaced bright and dark bands with central white spot
 - a few coloured rings with central dark spot
 - a few coloured rings with central white spot
21. It is difficult to observe diffraction in case of light waves, because
- light waves can travel through vacuum
 - speed of light is more
 - light waves are transverse in nature
 - wavelength of light is small.

Space for calculation / rough work



Physics and Chemistry

Physics

22. A calcite crystal is placed over a dot on a paper sheet and the crystal is rotated. On viewing through the calcite one sees
- a) A single stationary dot
 - b) two stationary dots.
 - c) two dots rotating about one another
 - d) one dot rotating about the other stationary dot-sometimes coinciding with it
23. Critical angle of the medium is 45° . Polarising angle of incidence at the surface of the medium is
- a) 45°
 - b) 38°
 - c) 22.5°
 - d) 54.7°
24. If only 2% of the main current is to be passed through a Galvanometer of resistance G , the resistance of shunt should be
- a) $G/50$
 - b) $G/49$
 - c) $50G$
 - d) $49G$
25. A small current carrying loop of area A behaves like a tiny magnet of magnetic moment M . Current in the loop is
- a) MA
 - b) A/M
 - c) A^2M
 - d) M/A
26. Two concentric circular coils, each having 10 turns with radii 0.2m and 0.4m carry currents 0.2A and 0.3A respectively in opposite direction. Magnetic field at the centre is
- a) $(2/3)\mu_0$
 - b) $(5/4)\mu_0$
 - c) $(1/4)\mu_0$
 - d) $(1/6)\mu_0$
27. Material of permanent magnet has
- a) high retentivity and high coercivity
 - b) low retentivity and high coercivity
 - c) low retentivity and low coercivity
 - d) high retentivity and low coercivity.
28. Power factor of a series LCR circuit is
- a) R
 - b) Z/R
 - c) R/Z
 - d) RZ

Space for calculation / rough work

Handwritten rough work for physics problems. It includes a circuit diagram with a resistor and a capacitor, and several calculations. One calculation shows a magnetic field $B = \frac{10^{-2}}{3}$. Another shows a magnetic field $B = \frac{10^{-2}}{0.4}$. There are also some scribbles and other mathematical expressions.

Physics and Chemistry

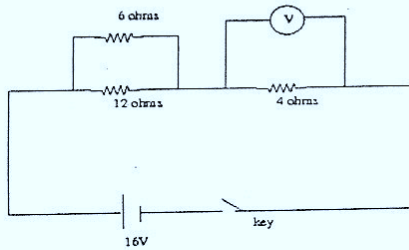
Physics

36. Specific resistance of a conductor material increases with
- a) increase with area of cross section
 - b) decrease in length
 - c) decrease in area of cross section
 - d) increases with temperature

37. The resistance of mercury at 4.2K is
- a) infinity
 - b) greater than at lab temperature
 - c) same as that of lab temperature
 - d) almost zero.

38. Temperature coefficient of resistance of platinum is $4 \times 10^{-3} / K$ at $20^\circ C$. Temperature at which increase in resistance of platinum is 10% its value at $20^\circ C$ is
- a) $25^\circ C$
 - b) $70^\circ C$
 - c) $45^\circ C$
 - d) $100^\circ C$

39. Ideal voltmeter connected as shown reads



- a) 16V
 - b) 12V
 - c) 4V
 - d) 8V
40. When a charged particle moves perpendicular to a uniform magnetic field, then
- a) its momentum changes total energy is same.
 - b) both momentum and total energy remain the same.
 - c) both momentum and its total energy will change
 - d) total energy changes. Momentum remains same.

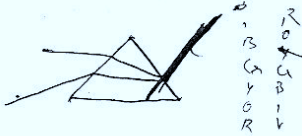
Handwritten note:
 $\frac{10 \times 10^{-3} \times 100}{100 - 20} = 1.25$

- a) 0.04 m/s
 - them no
 - a) 5/3
 - b) 5/4
 - c) 5/2
 - d) 4/3
2. Critical
- a) Gl
 - b) Gl
 - c) W
 - d) Di
3. A ray of index of
- a) 1.7
 - b) 1.6
 - c) 1.5
 - d) 1.8
4. In the s
- a) Un
 - b) M
 - c) M
 - d) M
5. Conve
- Focal
- a) f
 - b) g
 - c) k
 - d) -f
6. Two c
- a) 0
 - b) 0
 - c) 0
 - d) -0
17. Eddy
- a) b
 - b) p
 - c) p
 - d) p

Space for calculation / rough work

Physics and Chemistry

Ver D

41. 0.04 m of glass contains the same number of waves as 0.05m of water, when monochromatic light passes through them normally. Refractive index of water is $\frac{4}{3}$. Refractive index of glass is
- $\frac{5}{3}$
 - $\frac{5}{4}$
 - $\frac{5}{2}$
 - $\frac{4}{5}$
42. Critical angle will be maximum, when light travels from
- Glass to air
 - Glass to water
 - Water to air
 - Diamond to air
43. A ray of light incident on one face of an equilateral prism at 60° enters and leaves the prism symmetrically. Refractive index of the prism material is
- 1.5
 - 1.62
 - 1.73
 - 1.8
44. In the spectrum of visible light produced by a prism dispersion is
- Uniform throughout the spectrum
 - Maximum in the middle decreases on either sides.
 - Maximum towards yellow
 - Maximum towards violet.
- 
45. Convex lens of focal length f made of glass of Refractive index 1.5 is immersed in water of Refractive index $\frac{4}{3}$. Focal length is
- f
 - greater than f
 - less than f
 - $-f$
- Handwritten calculations for Q45:
- $$\mu_1 = 1.5 = \frac{3}{2}$$
- $$\mu_2 = \frac{4}{3}$$
46. Two co-axial lenses of power +4D and -2D are placed in contact. The focal length of combination is
- 0.5m
 - 0.25m
 - 0.16m
 - 0.5m
- Handwritten calculations for Q46:
- $$2D$$
- $$f = \frac{1}{2} = 0.5$$
47. Eddy currents are produced in a material when it is
- heated
 - placed in a time varying magnetic field.
 - placed in an electric field
 - placed in a uniform magnetic field.
- Handwritten calculations for Q47:
- $$\frac{1}{4} \rightarrow \frac{1}{2} \Rightarrow \frac{2-4}{4} = -\frac{1}{2}$$

Space for calculation / rough work

WWW

Physics and Chemistry

Ver D

48. Transformer works on 220V. Its efficiency is 80%. Out put power is 8KW. Primary current is approximately,

- a) 35A
- b) 18A
- c) 22A
- d) 45A

$$\frac{100}{100} = \frac{8}{I} \quad I = 10$$

49. Quality factor of a series LCR circuit decreases from 3 to 2. Resonant frequency is 600Hz. Change in band width is

- a) zero
- b) 100Hz increase
- c) 100Hz decrease
- d) 300Hz increase

 50. A stone dropped from the top of the tower reaches ground in 4 sec. Height of the tower is ($g=10\text{m/s}^2$)

- a) 20m
- b) 40m
- c) 60m
- d) 80m

$$s = 4$$

$$v = u + at$$

$$v =$$

51. Liquid crystal phase which are more close to the solid than to liquid is

- a) Nematic
- b) Smectic
- c) Lyotropic
- d) Cholesteric

 52. If the Earth shrinks in its size (radius) mass remaining the same, the value of g on its surface will

- a) increase
- b) decrease
- c) remains same
- d) is reduced to zero.

 53. Two rods of same area of cross section and lengths, and conductivities K_1 and K_2 are connected in series. Then in steady state conductivity of the combination is

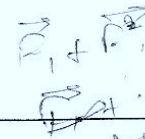
- a) $(K_1 + K_2)/(K_1 K_2)$
- b) $2K_1 K_2 / (K_1 + K_2)$
- c) $(K_1 + K_2)/2$
- d) $K_1 K_2 / (K_1 + K_2)$

54. The square of the resultant of two equal forces acting at a point is equal to three times their product. Angle between them is

- a) 30°
- b) 45°
- c) 60°
- d) 90°

$$F_1 \quad F_2$$

$$(F_1 + F_2)^2 = 3 F_1 F_2$$



Space for calculation / rough work

WWW

D Physics and Chemistry

Ver D

55. With the addition of impurities surface tension of a liquid
- increases
 - decreases
 - remains constant.
 - may increase or decrease depending on impurities
56. Viscosity decreases with increase in temperature is the reason for
- hot water moving faster than cold water
 - more viscous oils are used in motor cars during summer than in winter
- only (i) is correct
 - only (ii) correct
 - both (i) and (ii) are correct
 - both are wrong.
57. Moment of momentum of an electron revolving in second Bohr orbit of hydrogen is
- $2\pi h$
 - $h/2\pi$
 - h/π
 - $2h/3\pi$
58. The existence of excitation and ionisation energies in an atom is an evidence for
- stability of an atom
 - electrical neutrality of an atom
 - small size of the atom
 - stationary orbits in an atom.
59. Work function of a photosensitive metal is 3eV . The wavelength of incident radiations which can just eject photoelectrons from the metal is
- 600nm
 - 510nm
 - 414nm
 - 378nm
60. Three identical capacitors are first connected in series and then in parallel. The ratio of effective capacitances in the two cases is
- 9:1
 - 3:1
 - 1:3
 - 1:9
61. To dry ammonia gas the drying agent used is
- Con. H_2SO_4
 - P_2O_5
 - soda lime
 - anhydrous CaCl_2

Space for calculation / rough work

WWW