





16

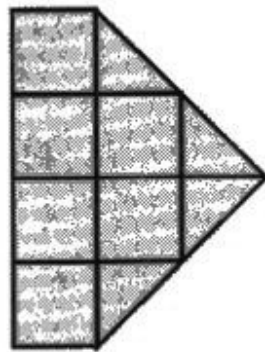
Which star has a sum less than 760?

(A)  (B) 

(C)  (D) 

17

How many squares are there in the given figure?



- (A) 7      (B) 2      (C) 4      (D) 5

18

Mohan shares 20 straws with his 4 friends. How many straws does each of them get?

- (A) 4      (B) 5  
(C) 10      (D) 20

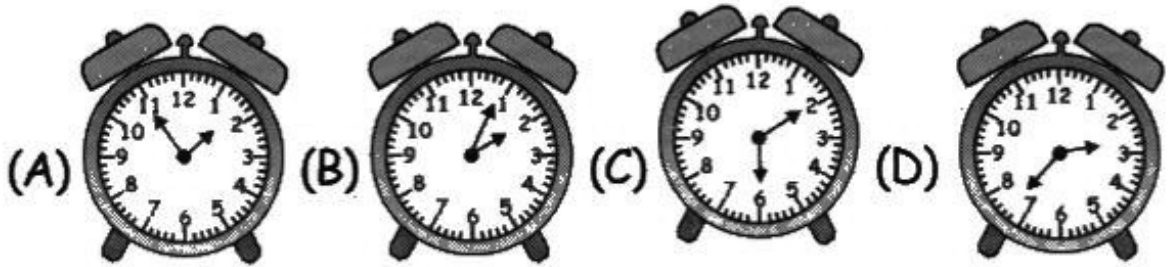
19

If  $\square + \triangle = 185$  and  $\triangle + \triangle + \triangle = 150$ ,what is the value of  $\square$  ?

- (A) 185      (B) 235  
(C) 135      (D) 150

20

Which clock shows a time between 2: 15 p.m. and 3: 00 p.m.?



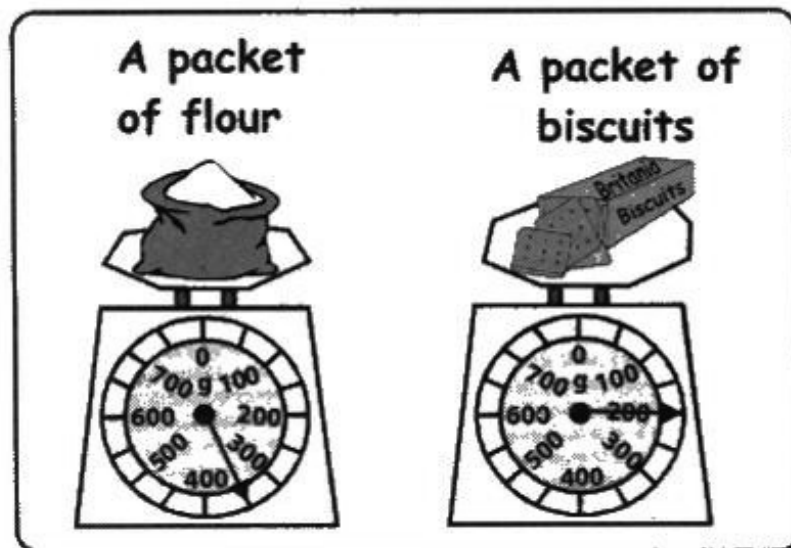
21

I am the third from the left but the sixth from the right in a queue. How many people are there in the queue?

- (A) 3      (B) 8      (C) 9      (D) 10

22

Study the given figure and answer the following question.

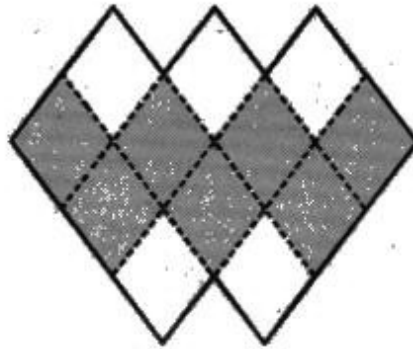


By how much is the mass of 1 packet of flour less than the mass of 4 packets of biscuits?

- (A) 250 g      (B) 350 g  
(C) 450 g      (D) 300 g

23

What fraction of the given shape is NOT shaded?



- (A)  $\frac{5}{7}$       (B)  $\frac{7}{12}$       (C)  $\frac{5}{12}$       (D) 7

24

Suraj has 47 stamps. His sister gives him 13 stamps.



If Suraj pastes the stamps equally onto 5 pages, how many stamps are there on each page?

- (A) 9      (B) 12      (C) 8      (D) 10

25

Avinash's mass is 50 kg. He is 4 kg heavier than Madhu. Balaji is 5 kg heavier than Avinash. What is their total mass?

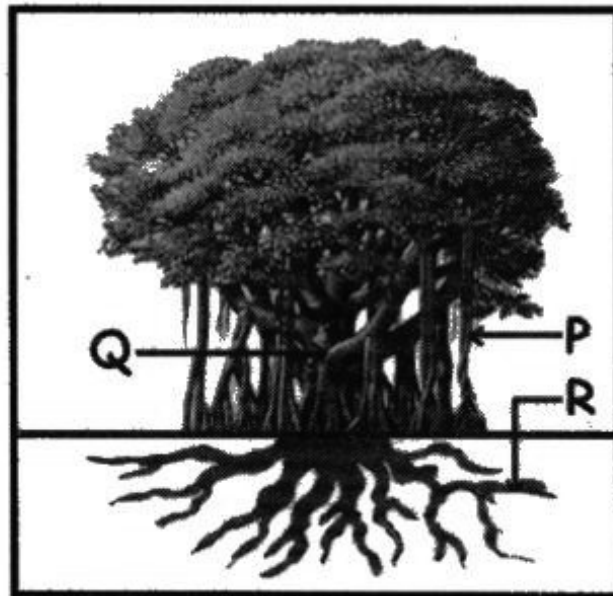
- (A) 165 kg      (B) 160 kg      (C) 151 kg      (D) 132 kg

26 Who am I?

I carry a shell on my back.  
I am very slow.  
I can live both on land  
and in water.

- (A) Frog (B) Snake  
(C) Turtle (D) Fish

27 Look at the diagram of a banyan tree.

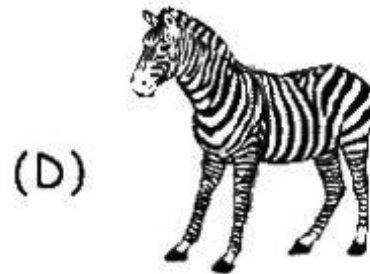
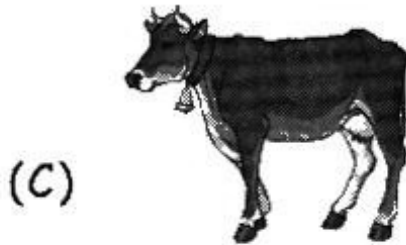
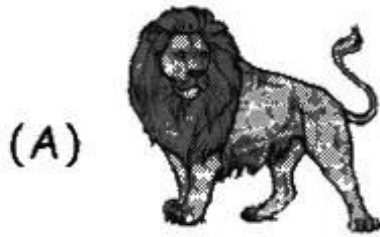


Which of the following labels represents the stem of the tree?

- (A) Only P (B) Only Q  
(C) Only R (D) Both P and R

28

Which of these is a domestic animal?



29



rose plant is a

(A) herb.

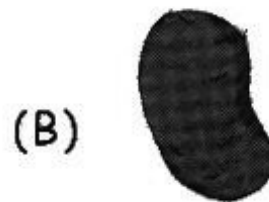
(B) shrub.

(C) tree.

(D) All of these

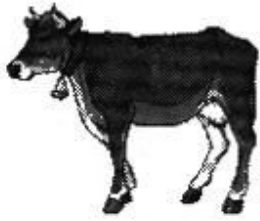
30

Which of the following is the stem part of a plant?



31

The animals given are similar. They all are



- (A) plant eating animals.
- (B) flesh eating animals.
- (C) aquatic animals.
- (D) desert animals.

32

Which part of the given vegetable do we eat?



- (A) Stems
- (B) Leaves
- (C) Flowers
- (D) Fruits

33

The function of the given organ is



- (A) to pump blood.
- (B) to breathe.
- (C) to think.
- (D) to store food.

34

What kind of a plant is watermelon?



(A) Climber

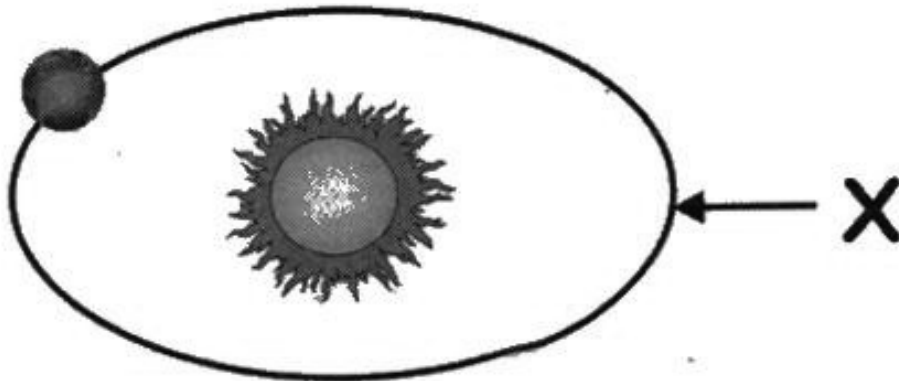
(B) Herb

(C) Creeper

(D) Shrub

35

Identify 'X' in the given figure.



(A) Eclipse

(B) Orbit

(C) Galaxy

(D) Both (A) and (C)

36

The boy in the given figure lives in which type of house?



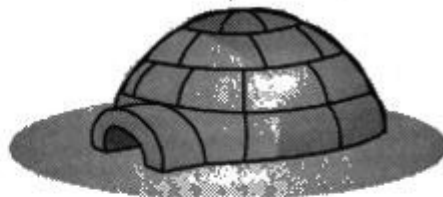
(A)



(B)



(C)

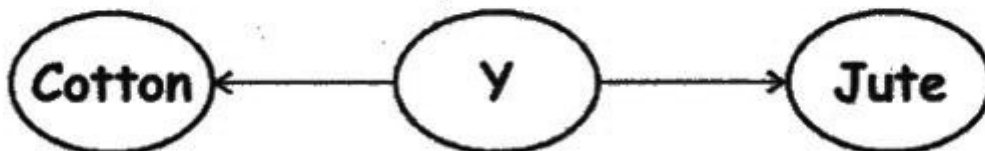


(D)



37

Identify 'Y' in the given figure.



(A) Animal

(B) Plant

(C) Chemicals

(D) Both (A) and (B)



38

P, Q, R and S represent the stages in the germination of a seed.

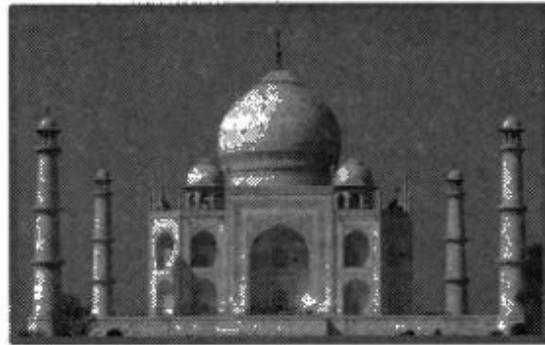
P - Root appears  
Q - Seed coat tears  
R - First leaves appear  
S - Shoot appears

Which one of the following shows the correct order in which germination takes place?

- (A) P → Q → R → S      (B) Q → P → S → R  
(C) Q → S → P → R      (D) S → P → Q → R

39

The Taj Mahal is made of



- (A) sandstone.      (B) granite.  
(C) marble.      (D) slate.

40

When light shines on an object, where does the shadow fall?

- (A) To the left side of the light.  
(B) To the right side of the light.  
(C) On the opposite side of the light.  
(D) Behind the light.

41

Which of the following is a source of surface water?

- (A) Borewell (B) Well  
(C) Rivers (D) Both (A) and (B)

42

Guess who I am.

I am cold and frozen

- (A) Steam (B) Ice  
(C) Spring (D) Water vapour

43

Which of these foods protects our body and helps us to stay healthy?



(B)



(C)



(D)



44

Which of the following statements is correct?

- (A) Our tongue helps us to see things.  
(B) We wear woollen clothes in summer.  
(C) Our skin helps us to feel things.  
(D) We get wool from desert plants.

45

How many sense organs do we have?

(A) 2

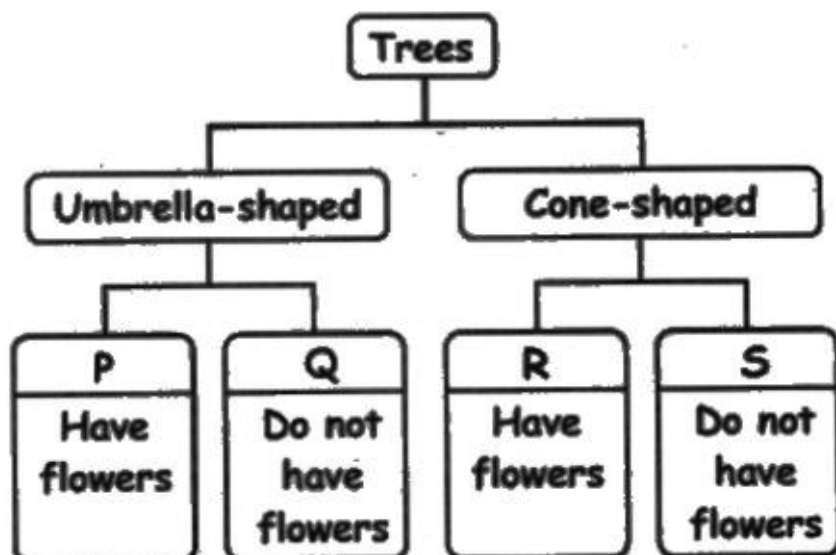
(B) 3

(C) 4

(D) 5

46

Look at the picture of the tree and the given classification diagram.



Which one of the following groups does the tree belong to?

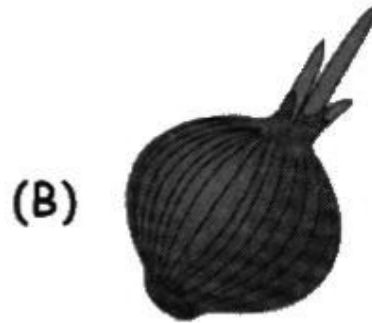
(A) P

(B) Q

(C) R

(D) S

47 Which of the following is the seed part of a plant?



48 The coat pattern of which of these animals is found at road crossings?

(A) Cheetah

(B) Leopard

(C) Zebra

(D) Cat

49 Which part of the sun flower plant will develop into a new plant?

(A) The stem

(B) The root

(C) The seed

(D) The flower

50 Match the Columns and select the correct option.

	Column-I		Column-II
i.	Jute	p.	Sugar
ii.	Cotton	q.	Bags
iii.	Sugarcane	r.	Towel

(A) i - p, ii - q, iii - r

(B) i - q, ii - r, iii - p

(C) i - r, ii - q, iii - p

(D) i - r, ii - p, iii - q

●●● ——— Key for NSTSE-2014 ——— ●●●

1. C	2. B	3. C	4. D	5. D	6. B	7. D	8. C	9. C	10. D
11. A	12. D	13. D	14. A	15. B	16. B	17. A	18. A	19. C	20. D
21. B	22. C	23. C	24. B	25. C	26. C	27. B	28. C	29. B	30. B
31. A	32. B	33. C	34. C	35. B	36. C	37. B	38. B	39. C	40. C
41. C	42. B	43. D	44. C	45. D	46. A	47. A	48. C	49. C	50. B