

# **What Is The NBRC Doing To Me**

**Presented by**  
**Kerry E. George, RRT, MEd, FAARC**

# Better Question Is

- What Is The NBRC Doing FOR Me?

# Functions of NBRC

- **Determine the job respiratory therapists perform**
- **Develop examinations that relate to performance of the job**
- **Administer and score examinations**
- **Award credentials to persons who pass**
- **Ensure NBRC credentials continue to have value**

## **The NBRC ....**

- **Was originally formed in November 1960 to credential respiratory (Inhalational) therapists**
- **Has supported the profession through development of national credentials for over 50 years**
- **Acts to ensure the continued recognition and value of NBRC credentials**

## **The NBRC is sponsored by four professional organizations**

- **American Association for Respiratory Care (AARC) 15 Board Members**
- **American College of Chest Physicians (ACCP) 5 Board Members**
- **American Thoracic Society (ATS) 5 Board Members**
- **American Society of Anesthesiologists (ASA) 5 Board Members**
- **Public Member – Elected by Board**



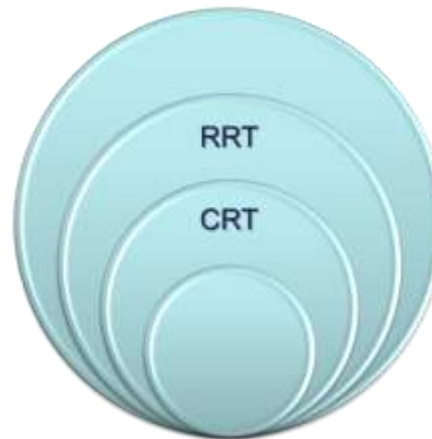
# **NBRC Credentials are Standards of Excellence**

- **Certified Respiratory Therapist (CRT)**
- **Registered Respiratory Therapist (RRT)**
- **Certified Pulmonary Function Technologist (CPFT)**
- **Registered Pulmonary Function Technologist (RPFT)**
- **Neonatal/Pediatric Respiratory Care Specialist (CRT-NPS or RRT-NPS)**
- **Sleep Disorders Specialist (CRT-SDS or RRT-SDS)**
- **Adult Critical Care Specialist (RRT-ACCS)**

# **NBRC Credentialing Examinations**

- **Daily testing by computer Monday-Saturday**
- **Two sessions per day - 9:00 a.m. and 1:30 p.m.**
- **Offered at over 180 Assessment Centers throughout the country**
- **Locations and maps for driving directions are available on the NBRC website: [www.nbrc.org](http://www.nbrc.org)**

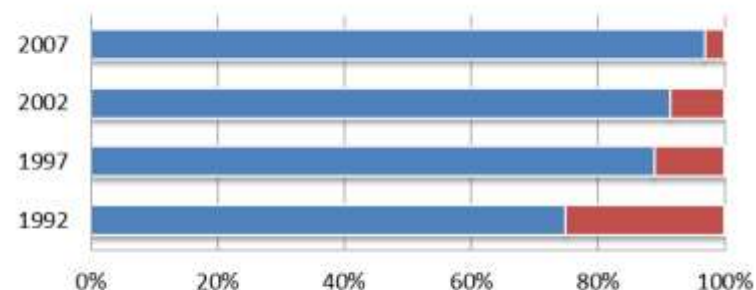
# What's New With Examinations at the NBRC?





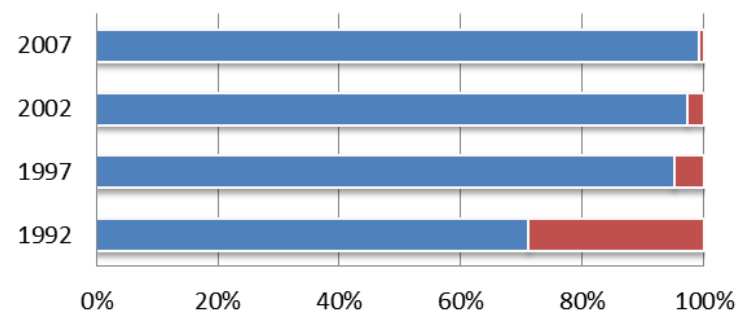
Over the last 4 job analysis studies, the subset of RRT-only content **shown in red** has shrunk

### Application of Importance Criterion



	1992	1997	2002	2007
■ Converged Content	75%	89%	92%	97%
■ Independent Content	25%	11%	9%	3%

### Application of Extent Criterion



	1992	1997	2002	2007
■ Converged Content	71%	95%	97%	99%
■ Independent Content	29%	5%	3%	1%

# Future Concept

RRT proficiency level

CRT proficiency level

# New Therapist Multiple-Choice Examination

- Examination length remains at 140 scored items and 20 items that are being pretested
  - Test length will remain the same so the licensure burden will remain constant
  - Psychometric properties of an examination of this length have been strong and candidates' characteristics change slowly

# New Therapist Multiple-Choice Examination

- One examination with two cut scores
  - Candidates achieving test scores equal to or greater than the low cut score will be awarded with Certified Respiratory Therapist credential
  - Candidates achieving test scores equal to or greater than the high cut score will be able to apply for the Clinical Simulation Examination

# New Therapist Multiple-Choice Examination

- Administration will begin mid January 2015
- Job analysis was completed in 2012
- Detailed Content Outline developed and being evaluated
- Studies between now and 2015
  - Relate examination outcomes to job performance
    - 2013-2014 criterion validation and test bias
  - Determine cut scores
    - 2014 passing point



# **NBRC Credentials (12/31/13)**

- **225,716 CRT credentials earned**
- **135,242 RRT credentials earned**
- **90,276 persons who have received the CRT have not achieved the RRT**
- **8144 CRT credentials earned in 2012**
- **6721 RRT credentials earned in 2012**
- **267 SDS credentials earned since began**
- **404 RRT-ACCS credentials earned since July 2012**

# Success Rates

- **CRT first attempt pass rate 78 – 80%**
- **Repeat attempts 28%**
- **WRRT first attempt pass rate 63 – 66%**
- **Repeat attempts 33%**
- **CSE first attempt pass rate 57 – 60%**
- **Repeat attempts 48%**
- **SDS first attempt pass rate 85%**
- **ACCS first attempt pass rate 85%**

# Clinical Simulation Examination

- Instant scoring demands selection of problems for new test forms that have been pretested or previously used
  - After a decade, keeping examination content current became an increasing challenge

# Clinical Simulation Examination

- Give the examination committee smaller content elements from which test forms are assembled
  - Decrease the length of each problem
  - Double the number of problems
- Keep testing time the same at 4 hours

# Score Accuracy

- Simulation test scores have been sufficiently accurate, but have the potential to be enhanced
  - Increasing items or measurement units will increase accuracy
  - IG and DM scores will be combined into one total test score to which one cut score will be applied
    - From the psychometric perspective, there will be one long test instead of two short tests



- Combining IG and DM scores shifts the area of concern
  - Some candidates could compensate for low DM scores when IG scores are added
  - The board has directed the examination committee to increase IG section pass levels
  - Successful candidates will have to score near the average for DM and IG

# **NBRC Credentials are recognized by...**

- **State licensure agencies**
  - **Currently, all of the states that regulate respiratory care practice recognize the national CRT Examination as the requisite examination for demonstrating competence at beginning practice and allow CRTs and RRTs to receive licenses by reciprocity or endorsement without re-examination.**

# **[www.NBRC.org](http://www.NBRC.org)**

- **NBRC Horizons**
- **Active Directory**
- **ALL Listing of Credentialed Practitioners**
- **Annual Renewal**
- **Pins/Patches/Credential Verification Requests**
- **Examination Information and Scheduling**
- **Practice Examinations**
- **Self-Assessment Examinations**

# **Examination Incentives...**

- **Discounted Examination Fees**
  - **\$50 off the RRT Examination fees when application for both WRRT and CSE submitted within 60 days of earning the CRT credential (90 days to test)**
  - **\$50 off the RPFT Examination fee when application is submitted within 60 days of earning the CPFT credential**
  - **\$50 off the Neonatal/Pediatric Examination fee when application submitted within 60 days of earning the RRT credential**

## **Examination Incentives...**

- **Marketing agreement with AARC that allows members to receive a \$40 discount on one examination of choice (excluding the CRT Examination) as a first-time test taker**



# Online Practice Examinations

- [www.nbrc.org](http://www.nbrc.org)
- **Practice examinations are available for all NBRC examinations**
- **Free of charge**

# Web-Based Self-Assessment Examinations (SAEs)

- [www.nbrc.org](http://www.nbrc.org)
- Purchase online through our LXR Store
- SAEs available for all NBRC examinations
- Program directors may purchase group orders online paying by credit card or requesting an invoice with net 60 terms

## **Examination Results**

- **Instant scoring of examinations provides candidate with results as they leave testing center**
- **The NBRC shares examination results with state licensure agencies using the entry-level CRT Examination for licensure**
- **The NBRC shares examination results with accredited education programs and the Commission on Accreditation for Respiratory Care (CoARC)**

# **Continuing Competency Program**

- **Requires all individuals who earn an NBRC credential on or after July 1, 2002 to participate**
- **Credentials earned after July 1, 2002 are valid for five years**
- **Continuing Competency Program does not effect credentials earned prior to July 1, 2002, but individuals can voluntarily participate in the program**

# **Continuing Competency Program Requirements**

- **CE Credit – 30 hours/5 years**
  - **AARC CRCE approved courses**
  - **Respiratory care specific courses approved for state license renewal/continuing education**
  - **Iowa requires 24 for each two year renewal**
  - **Two separate and unrelated processes**
- **Pass examination for highest credential held**
- **Pass examination not previously completed**
- **\$25 per year to maintain active status with the NBRC**



# **CCP Implementation Actions**

- **General information is provided through the annual renewal process**
- **Additional Notices:**
  - **one year prior to expiration - official notice**
  - **six months prior to expiration**
  - **90-days prior to expiration**
  - **30-days prior to expiration**
- **New Notice: Anniversary Card Emails**
  - **Sent every year to practitioners who are subject to the CCP in the month they originally earned the credential**
  - **Also sent as a thank you to practitioners not subject to the CCP**

# **CCP Continuing Education Submission**

- **Online process at [www.nbrc.org](http://www.nbrc.org)**
- **Random audit**
- **Simple and easy**
- **Can renew via CE up until the day before credential expires**

## **What's New at the NBRC?**

- **New admission requirements**
- **TMC must be graduate of CoARC accredited program**
- **ACCS, NPS, SDS 6 months since receiving CRT**
- **3 months since receiving RRT**

# What's New at the NBRC?

- **Adult Critical Care Specialists Launched July 17, 2012**
  - **Admissions Requirements & Fees:**
    - Be an RRT with at least one year of full-time clinical experience in a critical care setting (e.g. intensive care unit, emergency department, post-anesthesia recovery unit, long-term acute care setting)
    - New applicant: \$300
    - Repeat applicant: \$250
  - **Credential designation is RRT-ACCS**
  - **Free RRT-ACCS Practice Test is available on the NBRC website**
  - **Full length Self-Assessment Examination is also available on the NBRC website**



- ACCS
- CPFT
- CRT
- NPS
- RPFT
- RRT
- SDS



## NBRC News

Wednesday, May 09, 2012  
**Free Item Writing Webinar Now Available**  
A webinar hosted by Robert Shaw, PhD, RRT, FAARC that details the basics of writing examination questions, is available to view in the document library.

Wednesday, May 09, 2012  
**Applications Now Being Accepted for New ACCS Specialty Examination**  
Online and paper applications are now being accepted for the new Adult Critical Care Specialty Examination that is set to launch July 17, 2012! Prior to final scoring of the credentialing examination for Adult Critical Care Specialists, the examination items and resulting statistics will be reviewed to ensure that examination scores are accurate. Until this information is finalized, pass/fail status will not be reported to candidates at the time of examination.

As incentive for candidates to register and attempt the examination so the scoring process may be completed in a timely manner, the NBRC is offering a free ACCS Self-Assessment Examination (SAE) to candidates who schedule and attempt the ACCS Examination before September 1, 2012.

Monday, March 19, 2012  
**New Adult Critical Care Specialty Self-Assessment Examination Now Available!**

A Self-Assessment Examination for Respiratory Therapists Specializing in Adult Critical Care developed for the upcoming specialty examination is now available. You may purchase this new SAE by clicking [here](#).



## Adult Critical Care Specialty Examination



### The Adult Critical Care Specialty Examination is Now Available!

The NBRC is excited to announce the upcoming launch of a new specialty examination for respiratory therapists working in adult critical care settings. We sought input from a variety of organizations representing professionals involved in the arena of adult critical care so we could create a valuable credential that your employer, colleagues and patients will recognize and respect.

The new examination program was built on a collaborative effort with other organizations with a vested interest in protecting the public and improving care for adult patients receiving treatment in critical care settings. Because of this effort, the programs have wide support from organizations such as:

- The American Association for Respiratory Care
- The American College of Chest Physicians
- The American Society of Anesthesiologists
- The American Thoracic Society

The Adult Critical Care Specialty Examination program is designed specifically for a respiratory therapist with the RRT credential and experience in the field of adult critical care.

Eligible certificants have already demonstrated advanced knowledge in the field of respiratory care; therefore this examination will focus on competencies unique to therapists practicing in an adult critical care setting and not basic competencies of general respiratory care.

**Why should you earn the RRT-ACCS credential?** The answer is simple--the new specialty examination is unique to your daily tasks as an adult critical care specialist. It goes above and beyond general respiratory care activities so you can demonstrate your enhanced skill level in a fast-growing specialty within the field.

### Links

- [Self-Assessment Examination](#)
- [Submit an Online Application](#)
- [General FAQs](#)
- [Free Practice Examination](#)
- [Assessment Centers](#)

### Documents

- [Candidate Handbook.pdf](#)
- [ACCS Application Instructions.pdf](#)
- [Printable Specialty Application.pdf](#)
- [Adult Critical Care Detailed Content Outline.pdf](#)
- [Continuing Competency Program Brochure.pdf](#)



## Admission Requirements

# Examination Costs

- **Fee for the new ACCS examination is \$300**
- **Fees are determined by length and type of examination**
- **Cost of developing and maintaining the examination will never be paid for by examination fees candidates pay**
- **NBRC committed to offering examinations that are desired by respiratory care community**
- **None of the specialty examinations are self sustaining**
- **Annual renewal fees help cover costs of these examinations**
- **AMP helps hold examination development and administration costs in control**

# **What's New at the NBRC?**

- **The AASM has officially recognized the CRT-SDS and RRT-SDS credentials in its Standards for Accreditation for Sleep Disorders Centers**
- **New Neonatal/Pediatric Specialty Examination test specifications were implemented in August 2011**
- **Job analysis for the CRT and RRT examinations was completed in 2012**
- **Detailed Content Outline created based on results**
- **Presented at Summer Forum in 2013**



# Comparing Content Distributions

- **Items on Examinations**

• <b>DOMAIN</b>	<b>CRT TMC</b>	
• I. PATIENT DATA	26	55
• II. EQUIPMENT	29	20
• III. INTERVENTIONS	85	65
• Totals	140	140

# Comparing Cognitive Level Distributions

- **Items on Examinations**

• <b>LEVEL</b>	<b>CRT TMC</b>	
• <b>RECALL</b>	35	31
• <b>APPLICATION</b>	74	61
• <b>ANALYSIS</b>	31	48
• <b>Totals</b>	140	140



## **Other NBRC Activities**

- **Active Status renewal allows CRTs, RRTs, Neonatal/Pediatric Respiratory Care Specialists, Sleep Disorders Specialists, Adult Critical Care Specialists, and CPFTs and RPFTs to certify active practice under medical direction**
- **Quarterly newsletter- *NBRC HORIZONS***
- **NBRC DIRECTORY of Active Credentialed Practitioners**
- **ALL Directory of Credentialed Practitioners**

# **Keep Your Information Current with the NBRC**

- **Change of Address**
- **E-mail Address**
- **Can be Completed Online at [www.nbrc.org](http://www.nbrc.org)**
- **Renew your Active Status with the NBRC Annually**

# **It's All About the Money**

- **Computer based testing begun in 2000**
- **Cost of CRT Examination in 2000?**
- **\$190**
- **Cost of CRT Examination today?**
- **\$190**
- **Cost of annual renewal in 2000?**
- **\$25**
- **Cost of annual renewal today?**
- **\$25**

# It's All About the Money

- **Cost of a gallon of gas in 2000?**
- **\$1.75 <sup>9</sup>/<sub>10</sub>**
- **Cost of a gallon of gas today?**
- **\$4.23 <sup>9</sup>/<sub>10</sub>**
- **Cost of a package of Oreos in 2000?**
- **\$2.99 / 16 ounces**
- **Cost of a today?**
- **\$4.59 / 15.5 ounces**
- **NBRC fees have not increased in over 12 years**
- **Relative costs have decreased due to inflation**

# **The NBRC Supports the Profession by...**

- **Contributing to the American Respiratory Care Foundation (ARCF) to support education recognition awards, education and credentialing research grants, and the AARC International Fellowship Program**
- **Supporting the Lambda Beta Society, including funding of three scholarships by the NBRC's subsidiary corporation**



## **Other NBRC Activities**

- **Active Status renewal allows CRTs, RRTs, Neonatal/Pediatric Respiratory Care Specialists, Sleep Disorders Specialists, Adult Critical Care Specialists, and CPFTs and RPFTs to certify active practice under medical direction**
- **Quarterly newsletter- *NBRC HORIZONS***
- **NBRC DIRECTORY of Active Credentialed Practitioners**
- **ALL Directory of Credentialed Practitioners**

CRT - Windows Internet Explorer

http://nbrc.org/Pages/CRT.aspx

File Edit View Favorites Tools Help

Convert Select

Favorites CourseSites by Blackboard... Customize Links Free Hotmail Suggested Sites Web Slice Gallery Windows Marketplace Windows Media Windows

Commercial Card Expense ... CRT https://board.nbrc.org/Exa... New Tab


Page Safety Tools

**NBRC**  
The National Board for Respiratory Care

Search this site...

Home Credentialed Practitioners Examinations Educators State Licensure

## CRT Examination



The Entry-Level CRT Examination is designed to objectively measure essential knowledge, skills, and abilities required of entry-level respiratory therapists. The examination consists of 160 multiple-choice questions (140 scored items and 20 pretest items) distributed among three major content areas: clinical data, equipment, and therapeutic procedures. Candidates will be given three hours to complete the Entry-Level CRT Examination. [Click here](#) for additional examination Frequently Asked Questions.

If you are planning to take any of the credentialing examinations offered by the National Board for Respiratory Care, Inc. (NBRC), the Self-Assessment Examination provides an excellent opportunity for you to find out in advance how well you will do. The SAEs are available in web-based format and more information and pricing instructions can be found listed in the right hand pane of this page.

## Admission Requirements

☐ Collapse/Expand


- Applicants shall be 18 years of age or older.
- Applicants shall satisfy ONE of the following educational requirements:
  - Applicants shall have a minimum of an associate degree from a respiratory therapist education program 1) supported or accredited by the Commission on Accreditation for Respiratory Care (CoARC), or 2) accredited by the Commission on Accreditation of Allied Health Education Programs (CAAHEP) and graduated on or before November 11, 2009.
  - Applicants enrolled in an accredited respiratory therapy program in an institution offering a baccalaureate degree may be admitted to the CRT Examination with a "special certificate of completion" issued by a sponsoring educational institution. The CoARC will authorize such institutions to issue the "special certificate of completion" at the advanced-level following completion of the science, general academic and respiratory therapy coursework commensurate with the requirements for accreditation.
  - Applicants shall hold the Canadian Society of Respiratory Therapists (CSRT) RRT credential.

## Links

- [Self-Assessment Examination](#)
- [Submit an Online Application](#)
- [General FAQs](#)
- [Free Practice Examination](#)
- [Assessment Centers](#)

## Documents

- [Continuing Competency Program Brochure.pdf](#)
- [Candidate Handbook.pdf](#)
- [CRT Application Instructions.pdf](#)
- [CRT and RRT Printable Application.pdf](#)
- [Voluntary Recredentialing 2012.pdf](#)
- [Detailed Content Outline.pdf](#)





The National Board for Respiratory Care, Inc.

Please login to:  
**CRT Self-Evaluation Examination**

Name:

To have your test results emailed directly to you, enter your email address in the Name/ID field.

The test delivery server undergoes prescheduled, monthly routine maintenance, and your examination will not be accessible during this time. Please [click here](#) to check the status of the test delivery server and any scheduled maintenance periods before contacting technical support.



- Logon
- Your Account
- Customer Care
- Privacy
- Returns
- Shipping
- Store Hours
- Help
- Contact Us
- lxr.com

[Web Tests](#) > [Health Care](#) > **National Board for Respiratory Care, Inc.**

Web Tests are examinations taken via the Internet. After you have successfully placed your web test order, we will immediately e-mail you a confirmation with specific instructions on how to take the exam.

**IMPORTANT:** Depending on your e-mail settings and provider, it could take up to 1 hour for you to actually receive our e-mail. Some e-mail systems can misclassify incoming e-mail, so if you don't receive ours, please be sure and check your Spam and/or Junk e-mail folders before contacting us. Thanks!

*Please note that these exams can be taken only once per purchase. After you have finished and scored the exam, you cannot access the exam again.*

<a href="#">NBRC CRT SAE Form E</a>	\$40.00
Entry Level CRT Self-Assessment Examination – Form E	<a href="#">Add to cart!</a>
<a href="#">NBRC CRT SAE Form F</a>	\$40.00
Entry Level CRT Self-Assessment Examination – Form F	<a href="#">Add to cart!</a>
<a href="#">NBRC CSE SAE Form E</a>	\$60.00
Clinical Simulation Self-Assessment Examination – Form E (This examination is based on specifications effective January 1, 2010.)	<a href="#">Add to cart!</a>
<a href="#">NBRC CSE SAE Form F</a>	\$60.00
Clinical Simulation Self-Assessment Examination – Form F (This examination is based on specifications effective January 1, 2010.)	<a href="#">Add to cart!</a>
<a href="#">NBRC CPFT SAE</a>	\$40.00
CPFT Self-Assessment Examination	<a href="#">Add to cart!</a>
<a href="#">NBRC ACCS SAE</a>	\$40.00
Self-Assessment Examination for Respiratory Therapists Specializing in Adult Critical Care	<a href="#">Add to cart!</a>

Effective Date: 07-10-2009



## Entry Level CRT Examination Detailed Content Outline

Open cells show an examination could include items from indicated cognitive levels.  
Shaded cells prevent appearance of items on examinations.

	Cognitive Level			Totals
	Recall	Application	Analysis	
<b>I. PATIENT DATA EVALUATION AND RECOMMENDATIONS</b>	<b>11</b>	<b>14</b>	<b>1</b>	<b>26</b>
<b>A. Review Data in the Patient Record</b>	<b>4</b>	<b>0</b>	<b>0</b>	<b>4</b>
1. Patient history e.g., <ul style="list-style-type: none"> <li>present illness</li> <li>admission notes</li> <li>respiratory care orders</li> <li>medication history</li> <li>progress notes</li> <li>diagnoses</li> <li>DNR status</li> <li>patient education (previous)</li> </ul>				
2. Physical examination relative to the cardiopulmonary system e.g., vital signs, physical findings				
3. Laboratory data e.g., <ul style="list-style-type: none"> <li>CBC</li> <li>electrolytes</li> <li>coagulation studies</li> <li>culture and sensitivities</li> <li>sputum Gram stain</li> </ul>				
4. Pulmonary function results				



# How to Contact the NBRC...

**NBRC Executive Office  
18000 W. 105<sup>th</sup> Street  
Olathe, KS 66061  
Toll Free - 888-341-4811  
913-895-4900  
Fax 913-895-4650**

**[www.nbrc.org](http://www.nbrc.org)**

**[nbrc-info@nbrc.org](mailto:nbrc-info@nbrc.org)**

**Thank You!**

