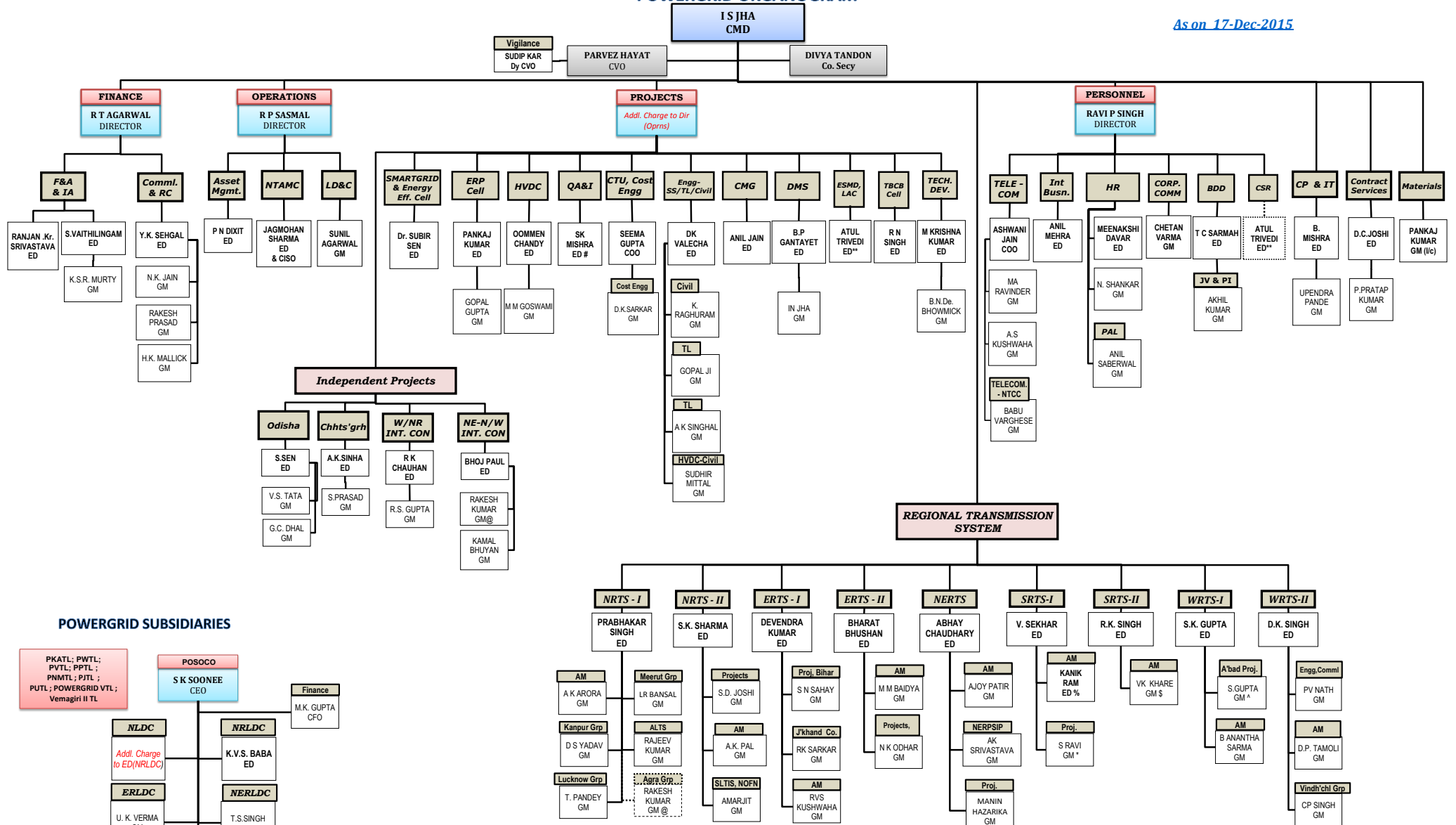
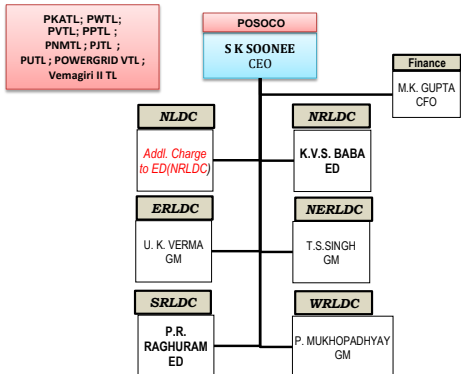


POWERGRID ORGANOGRAM

As on 17-Dec-2015



POWERGRID SUBSIDIARIES



Sh. S.K. Mishra, ED Incharge Coordination Cell-CMD Sectt
 % Sh. Kanik Ram, ED deputed to Bihar Grid Co. Ltd. w.e.f 20.12.2015
 ^ Sh S. Gupta, GM & CEO PWTL (POWERGRID Warora TL)
 * Sh S Ravi, GM & CEO PVTL (POWERGRID Vizag TL)
 \$ Sh VK Khare, GM & CEO PNMTL (POWERGRID Nagapattinam-Madhugiri TL)

*@ Sh.Rakesh Kumar,GM- dual reporting to ED(NE-NW IC) & ED(NR-I)
 ** Sh Atul Trivedi, ED- dual reporting to Dir(Proj.) & Dir(Per.s)

Other Senior Executives

- Sh. Sanjeev Singh ; ED (On Deputation as Managing Director - Delhi Transco Ltd.)
- Sh. D.K. Sarma ; ED (On Deputation to Bihar Grid Company Ltd.)
- Sh. J.P. Singh ; ED (On Deputation to Torment POWERGRID Ltd.)
- Sh. Rajesh Kumar; GM (On Deputn to North East Trans. Co. Ltd)
- Sh. R.B. Singh ; GM (On Deputation to Jaypee Powergrid Ltd.)
- Sh. P.N. Prasad ; GM & CEO (On Deputation to Cross Border Power Transmission Co. Ltd.)
- Sh. Sanjay Garg ; GM (Deputed in Ministry of Power)

Abbreviation	Description
A'bad Proj.	Aurangabad Projects
Addl.	Additional
ALTS	Agra Lalitpur Transmission Systems
AM	Asset Management
BDD	Business Development Department
CEO	Chief Executive Officer
CFO	Chief Financial Officer
Chh'ts'grh	Chhattisgarh
CISO	Chief Information Security Officer
CMD	Chairman and Managing Director
CMG	Corporate Monitoring Group
Co. Secy	Company Secretary
Comml.	Commercial
COO	Chief Operating Officer
Corp. Comm.	Corporate Communications
Cost Engg	Cost Engineering
CP	Corporate Planning
CSR	Corporate Social Responsibility
CTU	Central Transmission Utility
CVO	Chief Vigilance Officer
DMS	Distribution Management System
Dy CVO	Deputy Chief Vigilance Officer
ED	Executive Director
Energy Eff.Cell	Energy Efficiency Cell
Engg	Engineering
Engg-SS/TL/Civil	Engineering - Sub station/Transmission Line/Civil
ERLDC	Eastern Regional Load Despatch Centre
ERP Cell	Enterprise Resource Planning Cell
ERTS-I	Eastern Region Transmission System - I
ERTS-II	Eastern Region Transmission System - II
ESMD	Environment and Social Management Department
F&A	Finance and Accounts
GM	General Manager
Grp	Group
HR	Human Resource
HVDC	High Voltage Direct Current
I/c	In-charge
IA	Internal Audit
Int. Busn.	International Business
IT	Information Technology
J'khand Co.	Jharkhand Consultancy Project
JV & PI	Joint Venture & Private Investment
LAC	Land Acquisition Cell
LD&C	Load Despatch & Communication
Mgmt.	Management
NE-N/W INT. CON	North Eastern- Northern/Western Interconnector-I Project
NERLDC	North Eastern Regional Load Despatch Centre

Abbreviation	Description
NERPSIP	North East Region Power System Improvement Project
NERTS	North Eastern Region Transmission System
NLDC	National Load Despatch Centre
NOFN	National Optical Fibre Network
NRLDC	Northern Regional Load Despatch Centre
NRTS-I	Northern Region Transmission System - I
NRTS-II	Northern Region Transmission System - II
NTAMC	National Transmission Asset Management Centre
NTCC	National Telecom Control Centre
PAL	POWERGRID Academy of Leadership
PESM	Planning , Environment & Social Management
PJTL	POWERGRID Jabalpur Transmission Limited
PKATL	POWERGRID Kala Amb Transmission Limited
PNMTL	POWERGRID Nagapattinam-Madhugiri Transmission Limited
POSO	Power System Operation Corporation Limited
POWERGRID	Power Grid Corporation of India Limited
POWERGRID VTL	POWERGRID Vemagiri Transmission Limited
PPTL	POWERGRID Parli Transmission Limited
Proj.	Projects
PUTL	POWERGRID Unchahar Transmission Limited
PVTL	POWERGRID Vizag Transmission Limited
PWTL	POWERGRID Warora Transmission Limited
QA & I	Quality Assurance & Inspection
RC	Regulatory Cell
Sectt	Secretariat
SLTIS	Srinagar Leh Transmission and Interconnection systems
SRLDC	Southern Regional Load Despatch Centre
SRTS-I	Southern Region Transmission System - I
SRTS-II	Southern Region Transmission System - II
TBCB Cell	Tariff Based Competitive Bidding Cell
Tech. Dev.	Technology Development Department
Telecom	Telecommunications
Vindh'chl Grp	Vindhyachal Group
W/NR INT. CON	Western/Northern Interconnector Project
WRLDC	Western Regional Load Despatch Centre
WRTS-I	Western Region Transmission System - I
WRTS-II	Western Region Transmission System - II