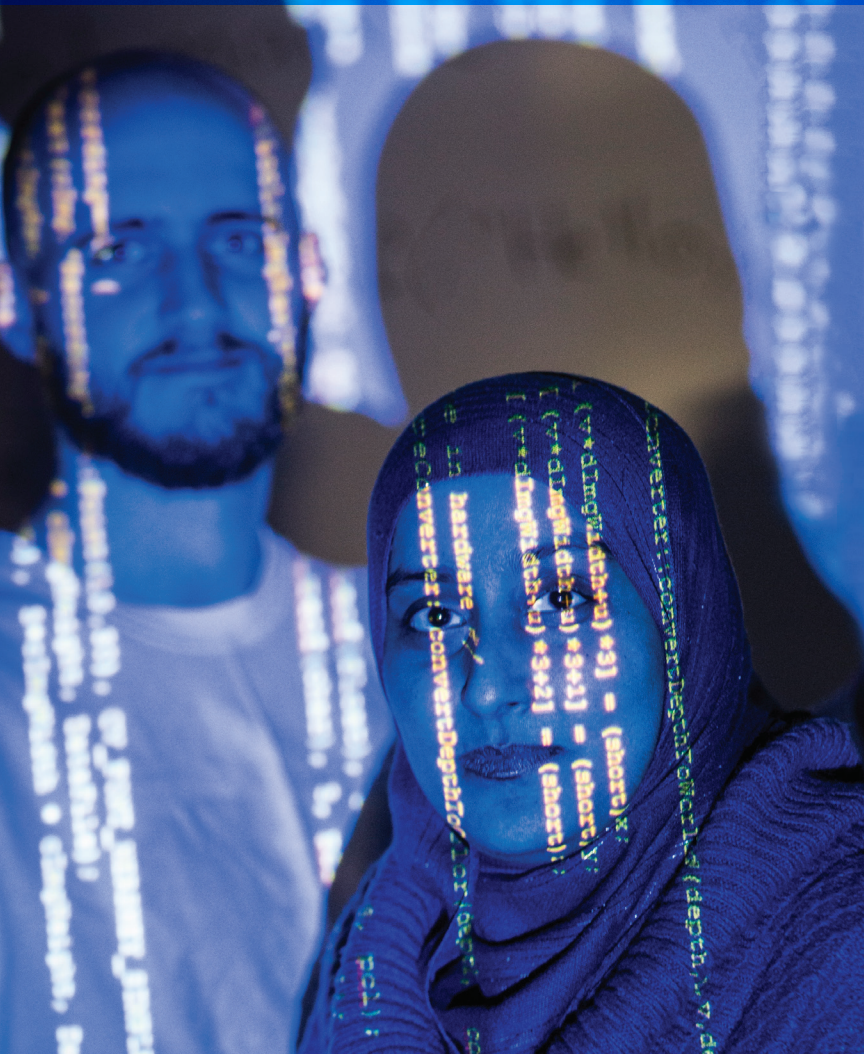


Computer Science

MSc / PhD

ryerson.ca/graduate



Computer Science

This highly applied, practical and useful program concentrates on real-world problems to which students can apply knowledge that they already have, discover new techniques and methods, and work on solutions with the guidance of highly qualified, engaged and caring faculty supervisors who work with students for their success.

Research Areas

Artificial Intelligence

- Genetic Algorithms
- Knowledge Representation
- Natural Language Processing
- Neural Networks

Networking

- Design
- Error-Correcting Codes
- Security

Robotics and Machine Vision

- Chemical, Biological, Radiological and Nuclear (CBRN)
- Cognition
- Interaction
- Mobility
- Urban Search and Rescue (USAR)

Software Engineering

- Programming Languages
- Reliability

Sample Courses

- Advanced Artificial Intelligence
- Advanced Software Engineering
- Genetic Programming
- Knowledge Discovery
- Method of Instruction
- Research Methods

Admissions Information

MSc

- Curriculum vitae
- Statement of interest
- Completion of a science honours degree in computer science or a related discipline
- Minimum grade point average (GPA) or equivalent of 3.00/4.33 (B) in the last two years of study
- Two letters of recommendation from former instructors or research supervisors

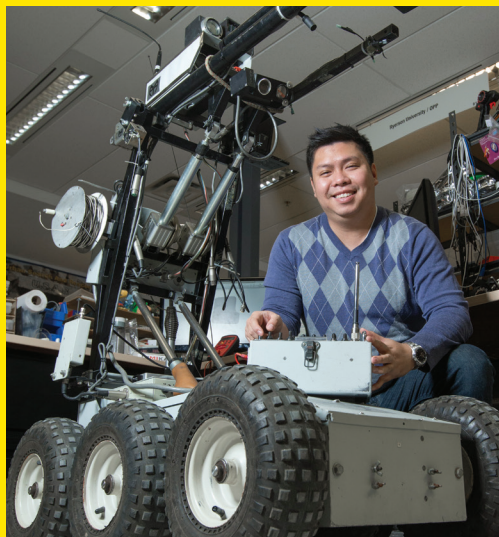
PhD

- Curriculum vitae
- Statement of interest
- Completion of a research-based master's degree in computer science or a related discipline
- Minimum GPA or equivalent of 3.33/4.33 (B+)
- Demonstrated research capabilities
- Three letters of recommendation, two of which must be academic

Applicants may be required to provide certification of English language proficiency. For more information, visit ryerson.ca/graduate/futurestudents/admissions/english-language.html.

Resources

- Computational Intelligence Initiative (CI2)
- Computer Science Usability Lab
- Distributed Applications and Broadband Networks Lab (DABNEL)
- Distributed Systems and Multimedia Processing (DSMP) Lab
- Network-Centric Applied Research (N-CART) Lab
- Research Commons
- Ryerson Centre for Cloud and Context-Aware Computing (RC4)
- Ubiquitous and Pervasive Computing Lab (UPCL)



“My experience in the Computer Science graduate program has been both challenging and rewarding. It gave me the opportunity to work on groundbreaking technologies and research.”

– Jimmy Tran, PhD candidate and MSc graduate

International Students

International Student Services (ISS) provides comprehensive support for the international student community at Ryerson.

ryerson.ca/internationalservices

Program Contact

computerscience@ryerson.ca

416-979-5000, ext. 2656

Yeates School of Graduate Studies

Ryerson University

350 Victoria St.

Toronto, ON M5B 2K3

Canada

ryerson.ca/graduate