

**Solved Paper**  
**SSC Higher Secondary Level Data Entry**  
**Operator & LDC Exam**  
Held on—28-11-2010 1st Sitting

**PART-I**

**GENERAL INTELLIGENCE**

**Directions (1-5):** In each of the following questions a series is given with one term missing. Choose the correct alternative from the given ones that will complete the series.

1. ZXV, TRP, NLJ ?  
(a) IFG (b) HDF  
(c) HGE (d) HFD
2. BDF, HJL, NPR ?  
(a) OQS (b) TUV  
(c) TVX (d) UVW
3. 113, 225, 449, ?, 1793  
(a) 897 (b) 789  
(c) 987 (d) 978
4. 230, 246, 271, 307, ?  
(a) 412 (b) 356  
(c) 518 (d) 612
5. 97, 86, 99, 88, 101, ?, ?  
(a) 88, 99 (b) 90, 103  
(c) 121, 108 (d) 114, 103
6. Select the alternative which is related to the given set.  
Given set is: (12, 20, 28)  
(a) (3, 15, 18) (b) (18, 27, 72)  
(c) (18, 30, 42) (d) (7, 14, 28)
7. 'X' and her grandfather differ in their ages by 50 years. After 6 years, if the sum of their ages is 152, their present ages are  
(a) 24, 74 (b) 26, 76  
(c) 45, 95 (d) 25, 75
8. A and B are brothers. E is the daughter of F. F is the wife of B. What is the relation of E to A?  
(a) sister (b) daughter  
(c) niece (d) sister-in-law
9. Arun ranks 17th in class of 31 students. What is the rank from the last?  
(a) 14 (b) 15  
(c) 16 (d) 17
10. If the day before yesterday was Thursday, when will Sunday be?  
(a) Today  
(b) Two days after today  
(c) Tomorrow  
(d) Day after Tomorrow
11. Raju is standing facing north. He goes 30 metres ahead and turns left and goes for 15

Solved Paper– 28-11 -2010

- metres. Now he turns right and goes for 50 metres and finally turns to his right and walks. In which direction is he heading?
- (a) North (b) East  
(c) South (d) West
12. Vijay starts from his office and walk 4 km towards north. Then he turns right and walks 2 km, then turns right and walks 6 km, then again turns right and walks 2 km. How far is he now from the starting point?
- (a) 0km (b) 6km  
(c) 12km (d) 16km
13. Wooden little cubes each with an edge of one inch are put together to form a solid cube with an edge of three inches. This big cube is then painted red all over the outside. When the big cube is broken-up into the original little ones, how many cubes will be without paint?
- (a) 0 (b) 1  
(c) 3 (d) 4
14. At a college party five girls are sitting in a row. P is to the left of M and to the right of O. R is sitting to the right of N, but to the left of O. Who is sitting in the middle?
- (a) O (b) R  
(c) P (d) M
15. If  $A = 1$ ;  $AND = 19$  then  $BAT = ?$
- (a) 22 (b) 23  
(c) 21 (d) 20
16. In a particular way the word STAG is coded as HGZT, HORN as SLIM. Using the same coding, how can NORTH be written?
- (a) NLGMI (b) MLIGS  
(c) MGLIS (d) NLGIS

**Directions:** From the given alternatives select the word which *cannot* be formed using the letters of the given word.

17. TRANSPORT
- (a) SPORT (b) STRAP  
(c) TRUST (d) START

**Directions:** From the given alternatives select the word which *cannot* be formed using the letters given the word.

18. INTERNATIONAL
- (a) ANNUAL (b) LAMINATION  
(c) TERMINATE (d) INTERNAL

**Directions (19-20):** In each of the following questions one/two statements are given followed by two conclusions I and II. You have to consider the two statements to be true even if they seem to be at variance from commonly known facts. You have to decide which of the given conclusions. If any, follow from the given statements.

19. **Statements:**
- Dogs have four legs.  
Tables have four legs.
- Conclusions**
- I. Tables are dogs.  
II. Dogs are tables.
- (a) Only I follows  
(b) Only II follows  
(c) Either I or II follows  
(d) Neither I nor II follows

20. **Statements:**
- All animals are birds.  
Some animals are human beings.
- Conclusions:**
- I. Some human beings are birds.  
II. Some birds are human beings.
- (a) I follows  
(b) II follows

- (c) Both I or II follows  
(d) Neither I or II follows
21. Identify the correct response from the given premises stated according to following symbols.  
If '-' stands for division  
'+' stands for multiplication.  
'÷' stands for subtraction  
'×' stands for addition  
Which one of the equation is correct?  
(a)  $18 + 24 - 24 \times 12 \div 16 = 12$   
(b)  $16 \times 14 - 24 \div 18 + 12 = -24$   
(c)  $24 - 12 + 12 \div 16 \times 18 = 26$   
(d)  $18 \div 16 + 12 \times 18 \div 12 = 24$
22. Select the correct combination of mathematical signs to replace \* signs and to balance the following equation.  
 $7 * 5 * 5 * 10$   
(a)  $+ \div - =$   
(b)  $\times - = \times$   
(c)  $\times + = \times$   
(d)  $+ \times \div =$
23. If  $34 * 12 = 23$ ,  $28 * 76 = 52$ ,  $97 * 39 = 68$  then what should  $37 * 73$  be?  
(a) 32 (b) 25  
(c) 86 (d) 55
- Directions (24-32):** In each of the following questions select the related letters/word/number/figure from the given alternatives.
24. DOCTOR : PATIENT :: LAWYER : ?  
(a) CUSTOMER (b) CLIENT  
(c) CONSUMER (d) BUYER
25. Encouragement : Victory :: Frustration : ?  
(a) Stalemate (b) Anger  
(c) Failure (d) Anxiety
26. Dog : Canine :: Horse : ?  
(a) Grass (b) Race  
(c) Hoof (d) Transport
27. UNDATED : ATEDUND :: CORRECT : ?  
(a) PRECTOC (b) RECTROC  
(c) ECTRORC (d) RECTCOR
28. AEHN : BGKR : DFGN : ?  
(a) EHJR (b) EIJR  
(c) EHKQ (d) DHKQ
29. NJMP : PLOR :: RTVX : ?  
(a) VTXZ (b) TVXZ  
(c) TVZX (d) SVZX
30. 365 : 90 :: 623 : ?  
(a) 36 (b) 45  
(c) 123 (d) 63
31. 248 : 3 :: 328 : ?  
(a) 7 (b) 5  
(c) 4 (d) 6
32. 212 : 436 :: 560 : ?  
(a) 786 (b) 682  
(c) 784 (d) 688
- Directions (33-42):** In each of the following questions, find the odd word/letters/number pair from the given alternatives.
33. (a) January (b) June  
(c) July (d) August
34. (a) Square (b) Sphere  
(c) Rectangle (d) Circle
35. (a) Copper (b) Bronze  
(c) Gold (d) Silver
36. (a) ccdffg (b) hhikll  
(c) mmmopp (d) qqrtuu
37. (a) MLNO (b) KJPQ  
(c) IHRS (d) GFTV

Solved Paper– 28- 11-2010

38. (a) 15 (b) 27  
 (c) 37 (d) 39  
 39. (a) (13,40) (b) (14,42)  
 (c) 15,46 (d) (16,49)  
 40. (a) BEHLN (b) E J L S Z  
 (c) D K Q V Z Q (d) A C I K T  
 41. (a) 119 (b) 154  
 (c) 85 (d) 51

**Directions:** Which one set of letters when sequentially placed at the gaps in the given letter series shall complete it?

42. a\_b\_abb\_ab\_a\_bba  
 (a) bbaab (b) babba  
 (c) baaba (d) aabba

**Directions:** Select the missing number from the given alternatives.

43. 5      4      3  
 6      5      4  
 23      14      ?  
 (a) 23 (b) 17  
 (c) 7 (d) 12  
 44. A solid cube is made using 64 small cubes. In how many small cubes two sides are seen?  
 (a) 24 (b) 32  
 (c) 40 (d) 42  
 45. If we substitute 1 to 24 indicating hours on the dial of a clock day and night by the letters of the English *alphabet* their order starting with 'c' which letter will represent 16 hours?  
 (a) W (b) P  
 (c) S (d) R

**Direction:** In the following question a word is represented by only one set of numbers as given in any one of the alternatives. The sets of numbers given

in the alternatives are represented by two matrices given below. The columns and rows of Matrix I are numbered from 0 to 4 and that of Matrix II from 5 to 9. A letter from these matrices can be represented first by its row and next by column number. For eg. 'B' can be represented by 11, 30, etc. 'U' can be represented by 89 etc. Identify the set for the word FISH.

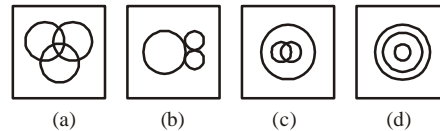
46. **MATRIX-I**

	0	1	2	3	4
0	M	L	F	H	B
1	H	B	M	L	F
2	L	F	H	B	M
3	B	M	L	F	H
4	F	H	B	M	L

**MATRIX-II**

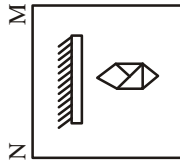
	5	6	7	8	9
5	L	K	S	U	N
6	U	N	I	K	S
7	K	S	U	N	I
8	N	I	K	S	U
9	S	U	N	I	K

- (a) 22, 81, 14, 69  
 (b) 33, 86 88, 41  
 (c) 3, 88, 67, 22  
 (d) 02, 67, 34, 88  
 47. Which figure represented the relation among Lawyers, Teachers and Educated?

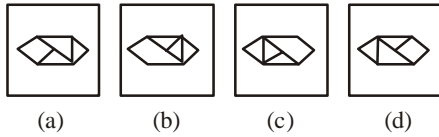


48. If a mirror is placed on the line MN, then which of the answer figures is the right image of the given question figure?

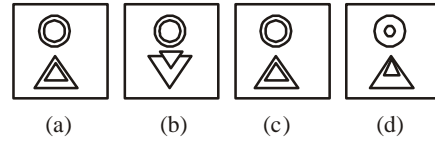
Question Figure



Answer Figures

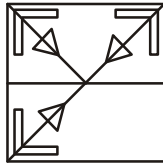


Answer Figures

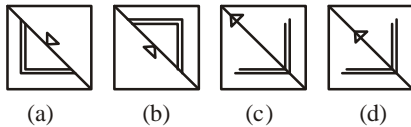


49. Which answer figure will complete the question figure?

Question Figure

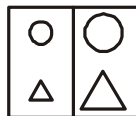


Answer Figures



50. A square transparent sheet with a pattern is given. Figure out from amongst the four alternatives as to how the pattern would appear when the transparent sheet is folded at the middle line shown.

Question Figure



## ANSWER SHEET

- |         |         |         |         |         |         |         |         |         |         |
|---------|---------|---------|---------|---------|---------|---------|---------|---------|---------|
| 1. (d)  | 2. (c)  | 3. (a)  | 4. (b)  | 5. (b)  | 6. (c)  | 7. (c)  | 8. (c)  | 9. (b)  | 10. (c) |
| 11. (b) | 12. (a) | 13. (b) | 14. (a) | 15. (b) | 16. (b) | 17. (c) | 18. (d) | 19. (d) | 20. (c) |
| 21. (c) | 22. (c) | 23. (d) | 24. (b) | 25. (c) | 26. (c) | 27. (d) | 28. (a) | 29. (b) | 30. (a) |
| 31. (c) | 32. (c) | 33. (b) | 34. (b) | 35. (b) | 36. (c) | 37. (d) | 38. (b) | 39. (b) | 40. (c) |
| 41. (b) | 42. (c) | 43. (c) | 44. (a) | 45. (d) | 46. (b) | 47. (c) | 48. (d) | 49. (d) | 50. (c) |



<http://upscportal.com/civilservices/order-books>

Order Online - [www.upscportal.com](http://www.upscportal.com)

## UPSCPORTAL PUBLICATIONS

### CSAT BOOKS



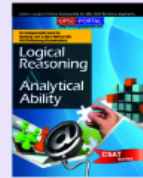
₹ 150/-  
Code: UP04



₹ 105/-  
Code: UP05



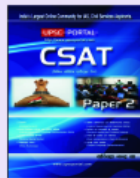
₹ 175/-  
Code: UP07



₹ 150/-  
Code: UP08



₹ 170/-



₹ 390/-

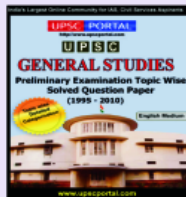
INDIA  
2011

Coming soon  
Code: UP16

Coming  
Soon

### General Studies

*Civil Services (Main)*

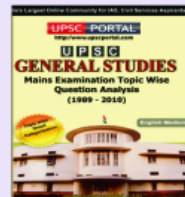


₹ 210/-  
Code: UM01



₹ 120/-  
Code: UM02

*Civil Services (Preliminary)*

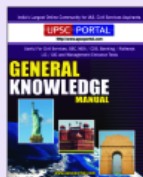


₹ 110/-  
Code: UP02



₹ 140/-  
Code: UP03

### Other Important Books of Your Interest



₹ 150/-  
Code: UP11



₹ 225/-  
Code: B01



₹ 225/-  
Code: B02



₹ 320/-  
Code: S01



₹ 225/-  
Code: B02



₹ 225/-  
Code: B02

Order Online - [www.upscportal.com](http://www.upscportal.com)

Helpline No. 011-45151781, 27650111



<http://upscportal.com/civilservices/order-books>