

[www.jainuniversity.ac.in](http://www.jainuniversity.ac.in)

# JAIN UNIVERSITY

Declared as Deemed-to-be University u/s 3 of the UGC Act, 1956

## **Corporate Office**

# 91/2, Dr. A N Krishna Rao Road

V V Puram, Bangalore - 560 004

**P** +91 80 4343 1000

## **Campus**

45<sup>th</sup> km, NH - 209, Jakkasandra Post

Kanakapura Taluk

Ramanagara District - 562 112

**P** +91 80 2757 7200

**F** +91 80 2757 7199

# 2014

## Handbook

Section 1	-	Introduction to the University
Section 2	-	Academic Matters
Section 3	-	Student Support Services
Section 4	-	Student Welfare Services
Section 5	-	Student Involvement
Section 6	-	Sports
Section 7	-	Regulations & Policies
Section 8	-	Calendar of Events 2014 - 15

## Welcome to the University

- President
- Chancellor
- Vice Chancellor

## From the President's Desk

Welcome to Jain University! I am glad that you have made the right decision to join Jain University - which is ready to provide you with the support, the guidance, and the inspiration to realize your goals. As the great writer Oliver Wendell Holmes once said: "A mind stretched by a new idea can never go back to its original dimensions," you are about to embark on a journey through higher education, one that will offer you every opportunity to stretch your mind and pursue your dreams through a wide array of intellectual, social and creative opportunities.

Being one of India's leading universities we have an international reputation for excellence in teaching, learning and research, reflected in the high standard of our students and staffs. At Jain University, learning takes place both in and beyond the classroom. We encourage you not only to apply yourself to your studies, but also to reach out to the broader horizon through remarkable facilities of the place coupled with the state-of-the-art infrastructure, the dedication of our faculty and staff, vivid culture of your fellow students all hold great promise for you. You will also find countless opportunities to broaden your perspective with lectures, seminars, internships, workshops and more.

The student handbook is a handy resource, which will provide you with information about the many support services, organizations, and activities available to you. Additionally, it will outline most of the university's policies, rules, and regulations.

Jain University welcomes you to the academic year 2014-2015. We will do everything in our power to ensure that your experience at our university is challenging, rewarding, and gratifying.

**Dr. Chenraj Roychand**  
President, Jain University



## Chancellor's Message

I congratulate you dear student, for choosing Jain University.

You are in pursuit of excellence, not just wanting to acquire knowledge and skills but wanting to become achievers. At Jain University you will be exploring new areas, discovering new interests, learning new skills to view your surroundings with a new understanding. By end of this journey, we hope you will know what really motivates and drives you as a person.

Jain University stands for leadership and excellence in every activity it is involved in. It is an oasis of calm with its serene surroundings, providing the ideal environment for the best and brightest students to interact with a highly qualified faculty who open new vistas of knowledge and serve as your primary guides here. The students get an opportunity to participate in well-designed social and cultural, nature and environment oriented activities and projects. These activities help them develop social and cultural dimensions learn to work in teams and develop EQ and leadership skills. The high calibre of faculty and postgraduate research gives ample opportunities for graduate students to become acquainted with advances in their field of study. Jain University provides many innovative programmes which will add value to your CV. The innovation centres, incubation centres, centre for entrepreneurship and centres for industry - academic interactions are just a few examples. I wish the students an eventful, energy packed and rewarding journey through your studentship and also in developing yourself as useful and responsible citizens.

I wish the teachers and supporting staff a grand success in their endeavour to mould such responsible future citizens, achievers and leaders. Best wishes to all of you.

**Dr. C.G. Krishnadas Nair**  
Chancellor, Jain University



## Vice Chancellor's Message

**Dear Student,**

I am delighted to welcome you to Jain University, an exciting university with a vibrant history and promising future, a wonderful place to learn and to grow intellectually and academically.

Jain University possesses a wealth of academic experience combined with a great spirit and a commitment to excellence that clearly sets it apart from other universities in Bangalore. Each centre of Jain University is like a home away from home. Almost everyone around you speaks a language known to you and never will you feel lonely even for a second. Very soon you will discover that you are a member of the largest circle of friends drawn from every state in India. Whether you are an aspiring entrepreneur, manager, accounting professional, corporate secretary, business analyst, mechanical engineer, molecular biologist, media person or a creative artist, you can be rest assured that you will get excellent education at Jain University and find your pathway to a rewarding career. W.B. Yeats says "Education is not the filling of a pail, but the lighting of a fire". We advocate such a model of education. Our teachers do not believe in filling your heads but kindling the fire for learning in you.

Your years at university are very important. While you are here, we encourage you to strike a healthy balance between your academic activities and your enjoyment of the rich sporting and cultural opportunities that the University offers. Our goal is to educate you as a whole person and we recognize that some of the important lessons you will learn will take place outside the lecture hall, the laboratory, and the library. We aim to give you the opportunity to spread your wings within a safe and exciting environment.

Best of luck with your studies, and I am certain that your time at the Jain University will be enjoyable and fruitful.

**Dr. N. Sundararajan**

Vice Chancellor, Jain University



## Introduction to the University

- Background to the University
- Vision & Mission
- Fast Facts
- Governance
- Organisation Structure
- University Principal Officers

## About Jain University

Jain University (formerly Sri Bhagawan Mahaveer Jain College, SBMJC) is declared deemed to be University under section 3 of the UGC act, 1956 by the Ministry of Human Resource Development of the Union Government vide notification No. F-9-57/2007-U.3 (A) Ministry of HRD, GOI December 19, 2008 & July 24, 2009. It is promoted by the Jain University Trust. Jain University Trust is managed by the JGI Group.

Headquartered at Bangalore, the JGI Group represents a cluster of 85 vibrant educational establishments. After 23 years, the Group is today home to over 45000 students and 4500 staff members engaged at the P - 12, Undergraduate & Post-graduate levels across 64 campuses and Centres of Excellence.

The University offers Undergraduate, Postgraduate and Research degrees in Arts, Sciences, Engineering and Technology, Management and Commerce. At Jain University Undergraduate & Postgraduate aspirants have an opportunity to fulfill education requirements, choose among a wide variety of elective courses and interdisciplinary programmes and be a part of research undertaken by the University in diverse fields.

Jain University advocates sports as an integral part of the curriculum in conformity with the holistic vision. Talented students who have reached national & international standards or in some instances played in leagues or clubs in any sport are given academic support and scholarships.

## Vision

"To foster human development through Excellence in Quality Education, Research and Entrepreneurial Development"

## Mission

- To provide quality education, creating human assets / manpower and intellectual capital
- To enhance research and development in different disciplines
- To develop new generation entrepreneurs who will be instrumental in fueling economic growth
- To create able leaders, managers and technocrats
- To foster an ethical environment founded on human values in which both spirit and skill will thrive to enrich the quality of life

## Fast Facts

### Started

1990 as Sri Bhagawan Mahaveer Jain College

### Location

Bangalore, India

### Land Details

300 acres in Kanakapura, which is the unitary campus of JU

### Governance

- Board of Management
- Planning and Monitoring Board
- Finance Committee
- Academic Council

### Student Strength

8500

### Teaching Faculty Strength

480

### Campuses

5

### Ranking

In India Today - Nielson Survey of India's best Universities, 2013, Jain University has been Ranked No.1 among top private universities in South India & Ranked No.17 among top 50 universities in India

### Degrees offered

- 12 Bachelor's degrees
- 7 Dual integrated degrees
- 10 PG Diploma degrees
- 59 Master's degrees
- 50 Research degrees

### Faculties

- Arts

- Sciences
- Engineering and Technology
- Management
- Commerce

### Schools

- School of Graduate Studies, J C Road
- School of Graduate Studies, V V Puram
- Center for Management Studies
- School of Engineering and Technology
- Center for Post Graduate Studies
- School of Commerce & Management Studies
- CMS Business School
- International Institute for Aerospace Engineering and Management

### Centres

- Centre for Emerging Technologies
- Centre for Nano and Material Sciences
- Centre for Disaster Mitigation
- Centre for Research in Aerospace Engineering and Management
- Chenraj Roychand Centre for Entrepreneurship
- Centre for Research in Pure and Applied Sciences
- Centre for Ancient History & Culture
- Centre for Research in Advanced Bio Sciences
- Centre for Research in Indian Psychology

### Management Divisions

- Finance Department
- Facilities Management & Projects
- Office of HR & Strategic Communications

### Companies Incubated

Total Companies: 50

### JU - Radio station

Radio Active 90.4 MHz (Community Radio)

## University Governance

The **Board of Management** is the Principal Executive body of the University and has the powers to take all necessary decisions for the smooth and efficient functioning of the University.

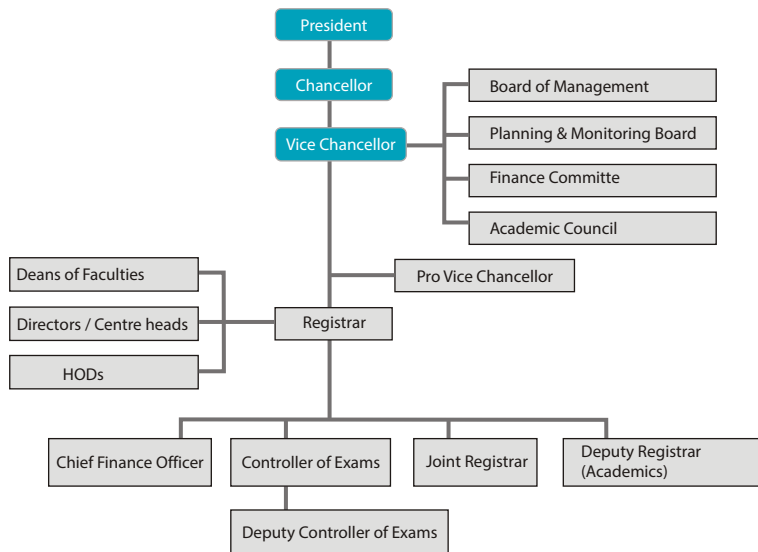
The **Planning and Monitoring Board** reviews the progress made on implementation of policy and develops strategic plans for the University.

The **Academic Council** is the principal academic body of the University and is responsible for the maintenance of high standards of education, teaching & training, research and examinations.

The **Finance Committee** monitors the flow of funds and approves budget for the University. The audited statement of accounts for the University comes under the scrutiny of this Committee.

The Vice Chancellor is the Chairman of all these statutory bodies and the membership in these bodies are as per UGC guidelines.

## Organisation Structure



## University Principal Officers

### Pro Vice Chancellor(s)

Dr. N G R Iyengar  
Dr. Sandeep Shastri

### Chief Mentor

Prof. K S Shantamani

### Registrar

Prof. N V H Krishnan

### Joint Registrar

Mr. M S Santhosh

### Controller of Examinations

Dr. B T Venkatesh

### Chief Finance Officer

Mr. S L Ramamurthy

### Director - Academics and Planning

Dr. Jayagopal Uchil

### Dean - Sciences

Dr. Sudha Deshmukh

### Dean - Social Sciences and Humanities

Dr. Choodamani Nandagopal

### Dean - Commerce & Management and Director - Placements

Dr. Easwaran Iyer

### Dean - Research

Dr. Krishna Venkatesh

### Dean - Languages

Dr. Mythili P Rao

### Director - Admissions

Prof. Dinesh Nilkant

### Director - Internal Quality Assurance Cell

Dr. Rekha Sethi

### Director - HR & Strategic Communications

Ms. Aparna Prasad

### Director - International Relations

Mr. M S Parswanath

### Deputy Controller of Examinations

Prof. N S Manjunath

### Deputy Finance Officer

Mr. N Babu

## Academic Matters

- Schools & Centres
- Faculty & Programmes

## SECTION 2

### Schools & Centres

#### **School of Graduate Studies, JC Road**

School of Graduate Studies offers Undergraduate, Postgraduate & Research programmes in Pure Sciences, Life Sciences, Computer Application, Humanities & Social Sciences.

#### **Center for Management Studies**

Center for Management Studies (CMS) is a top-notch educational institute that imparts learning in management and entrepreneurial studies with precision. It fosters climate in which ideas & intellectual property generated are used to full advantage for graduates who are of high intellectual & innovative ability and make major impacts in a wide range of work places & throughout the society.

#### **Center for Post Graduate Studies**

Located in Jayanagar, Center for Post Graduate Studies specializes in subjects related to Biotechnology, Biochemistry, Microbiology, Physics and Electronics. It is a dedicated and innovative institution which enhances all aspects of Postgraduate education, Research and Development.

#### **School of Engineering & Technology**

Jain University Engineering pushes the frontiers of modern Science and Engineering through teaching and research. School of Engineering & Technology offers a volley of programmes that involve theoretical and practical learning in equal measure in order to sculpt potential engineers to perfection.

#### **Centre for Research in Social Sciences and Education**

The Centre for Research in Social Sciences and Education undertakes research in the field of

Democracy Studies & Indian Politics. The centre promotes research in new teaching methodologies & dissemination through innovative tool kits, workshops & other outreach programmes.

#### **Centre for Disaster Mitigation**

The Centre for Disaster Mitigation aims at carrying out research, teaching, testing & consultancy in the areas of earthquakes, floods & droughts, fire safety engineering & industrial waste utilization with a view to develop a group of well trained man power catering to the ever increasing needs of the country in the field of Disaster Mitigation.

#### **Centre for Emerging Technologies**

The Centre for Emerging Technologies established under the aegis of industry institute relationship programme is a global hub for promoting new technologies and undertaking research and consultancy in diverse domains of engineering.

#### **Centre for Nano and Material Sciences**

Centre for Nano and Material Sciences (CNMS) has oriented its research in chemistry focusing on Catalysis, Electrochemistry, Neurochemistry and Energy materials. It offers a critical mass of world class researchers with unique capabilities and expertise in nano-structured assemblies, electrochemical phenomena, catalyst materials integral to energy conversion and storage sensing technologies, together with clinical characteristics of anti neuro-inflammatory potentials.

#### **Centre for Research in Aerospace Engineering and Management**

Centre for Research in Aerospace Engineering and Management is involved in cutting edge

research and generates a pool of technical manpower skilled in Aircraft Design, Avionics, Aircraft Maintenance Engineering and Airport Infrastructure & Management both at the Undergraduate, Postgraduate and Research levels. It is supported by academic institutions and Industrial organizations like ISRO, HAL, Airports Authority of India, NAL, Air India, BIAL, CIAL and many more.

### **Chenraj Roychand Centre for Entrepreneurship**

Chenraj Roychand Centre for Entrepreneurship promotes entrepreneurial development, business incubation, empirical research & action research in the area of Entrepreneurship. Till date 50 companies have been incubated. The areas of business operations include hospitality, investment advisory, software services through telecommunication, interior design, hotel industry, niche marketing & educational services.

### **Centre for Research in Pure and Applied Sciences**

One more initiative of the Jain University aims at promoting research in frontier areas of basic & applied sciences in computational Biology and Bio-informatics, Industrial Microbiology and Herbal drug development against tuberculosis.

### **Centre for Ancient History & Culture**

The Centre is established with a view to present an objective analysis of Ancient Indian History. The research work in the centre intends to review scholarly works on Vedic culture and present Indian history in the right perspective. The thrust areas of research include Monographs on Indian Astronomy

before Siddhantha Period, manuscriptology and to bring out a three volume encyclopedia on technical-scientific terminologies used in ancient Indian literature.

### **Centre for Research in Indian Psychology**

The first ever university-based Centre for Indian Psychology was started by HNA to undertake rigorous research work in the field of Indian Psychology to establish a strong theoretical foundation as well as to evoke methods that would facilitate the study and applications of Indian Psychology in academics and the professional domain.

### **Centre for Research in Advanced Biological Sciences**

The Centre has been established to undertake research and studies in Biological sciences and Vrکشayurveda with an integrated approach encompassing the whole gamut of the plant sciences in ancient and modern standpoint. It is the firm belief of the university that a Holistic approach is necessary in order to understand the various facets of the biological system specially its Indian point of view.

### **CMS Business School**

The CMS Business School offers high quality MBA programme to students aspiring careers in management and building entrepreneurship.

### **School of Commerce & Management Studies**

The School of Commerce & Management Studies offers Undergraduate, Postgraduate and Research programmes in Commerce and Management.

## **Programmes @ Jain University**

### **ARTS**

#### **UNDERGRADUATE PROGRAMMES**

##### **Bachelor of Arts (BA)**

- Journalism, Optional English, Psychology
- Psychology, Economics, Sociology
- Psychology, Economics, Political Science
- Psychology, Economics, Journalism

##### **Bachelor of Media Studies (BMS)**

#### **DUAL DEGREE INTEGRATED PROGRAMMES**

- BA + MA (Journalism)
- BA + MA (Economics)
- BA + M.Sc (Psychology)

#### **POSTGRADUATE PROGRAMMES**

##### **Master of Arts (MA)**

- English
- Economics
- Classical Dance (Bharatanatyam)
- Classical Music (Carnatic / Hindustani)
- Public Policy & Administration
- Cultural Studies

##### **Master of Visual Arts (MVA)**

- Painting
- Applied Art

##### **MS (Mass Communication)**

### **SCIENCES**

#### **UNDERGRADUATE PROGRAMMES**

##### **Bachelor of Science (B.Sc)**

- Physics, Mathematics, Computer Science
- Physics, Mathematics, Electronics
- Mathematics, Electronics, Computer Science

- Biotechnology, Chemistry, Microbiology
- Biotechnology, Chemistry, Botany
- Biotechnology, Chemistry, Genetics
- Animation
- Forensic Science

##### **Bachelor of Computer Application (BCA)**

#### **Bachelor of Computer Application (Specialization)**

- Business Data Analytics
- Visual Effects
- Infrastructure Management & Information Security
- Information Security & Mobile Applications
- Mobile Applications & Cloud Technology
- Cloud Technology & Information Security

##### **Bachelor of Science in Interior Design (B.Sc ID)**

#### **DUAL DEGREE INTEGRATED PROGRAMMES**

- B.Sc + M.Sc (Physics)
- B.Sc + M.Sc (Biotechnology)
- B.Sc + M.Sc (Forensic Science)

#### **POSTGRADUATE PROGRAMMES**

##### **Master of Science (M.Sc)**

- Biotechnology
- Industrial Biotechnology
- Microbiology
- Biochemistry
- Physics
- Chemistry
- Psychology
- Forensic Science
- Animation
- Infrastructure Management Services
- Information Security Management Services
- Storage Cloud Technology



- Mobile Application

### **MS (Information Technology)**

### **Master of Computer Applications (MCA)**

## **ENGINEERING & TECHNOLOGY**

### **UNDERGRADUATE PROGRAMMES**

#### **Bachelor of Technology (B.Tech)**

- Aerospace Engineering
- Information Science & Engineering
- Computer Science Engineering
- Mechanical Engineering
- Electrical & Electronics Engineering
- Civil Engineering
- Electronics & Communication Engineering

### **POSTGRADUATE PROGRAMMES**

#### **Master of Technology (M.Tech)**

- Aerospace Engineering - Aerodynamics (AD)
- Aerospace Engineering - Aerospace Structures (ST)
- Aerospace Engineering - Avionics (AV)
- Aerospace Engineering - Propulsion
- Computer Science & Engineering
- Signal Processing & VLSI Design
- Thermal Engineering
- Building Science and Technology
- Radio Frequency Communication
- Digital Signal Processing
- Energy Management & Climate Change Technology
- Energy Engineering
- Software Engineering
- Food Science & Technology

#### **MS Engineering**

- Aerospace Engineering - Aerodynamics (AD)
- Aerospace Engineering - Aerospace

Structures (ST)

- Aerospace Engineering - Aerospace Propulsion
- Aerospace Engineering - Avionics (AV)
- Aerospace Engineering - Manufacturing & Management (M&M)

## **COMMERCE**

### **UNDERGRADUATE PROGRAMMES**

#### **Bachelor of Commerce (B.Com)**

- Certified Programme in Capital Markets
- Graduate Diploma in Entrepreneurship & Business Management
- Certified Programme in General Management
- Diploma Course in Foreign Language
- Certified Diploma in Gems and Jewellery Design
- Diploma in BOCA + Tally
- Certificate Course in Media & Entertainment
- Industry Oriented Certified Programme in HR & Counseling Skills (CPHRCS)
- KCAP

#### **Bachelor of Commerce (Professional)**

- Associate Company Secretary (ACS) and Certified Programme in General Management
- Certified Programme in Banking & Finance
- Associate Chartered Accountant (ACA) and Certified Programme in General Management
- Fellow Programme in Insurance
- Certified Programme in Logistics and Supply Chain Management

#### **Bachelor of Commerce (Honours)**

- Corporate Secretaryship
- Management Accounting
- Corporate Accounting

### **Bachelor of International Business & Finance (BIBF)**

### **POSTGRADUATE PROGRAMMES**

#### **Master of Commerce (M.Com)**

#### **Master of International Business (MIB)**

#### **Master of Financial Management (MFM)**

## **MANAGEMENT**

### **UNDERGRADUATE PROGRAMMES**

#### **Bachelor of Business Administration (BBA)**

- Practical Finance
- Practical Marketing
- Practical Human Resource
- Family Managed Business
- Entrepreneurship
- Event Management
- General Management
- Global Leadership
- Media Management
- Brand & Advertising
- Digital Marketing
- Politics & Governance
- Jewellery
- Construction & Real Estate
- Hospitality Management
- Politics & Governance
- Stock Market

### **DUAL DEGREE INTEGRATED PROGRAMMES**

- BBA + MBA
- 

### **POSTGRADUATE PROGRAMMES**

#### **Master of Business Administration (MBA)**

- Marketing
- Finance
- Human Resource Management
- Entrepreneurship and Family Business Management

### **Executive MBA Programme**

### **Executive MBA (Family Managed Business) Programme**

### **MBA in Aviation Business Management**

## **POST GRADUATE DIPLOMA PROGRAMMES**

- Post Graduate Diploma in Fire Safety Engineering
- Post Graduate Diploma in Business Management
- Post Graduate Diploma in Enterprise Management
- Post Graduate Diploma in Information Technology (Business Technology Management / Data Analytics)
- Post Graduate Diploma in Psychological Counselling
- Post Graduate Diploma in Sports Psychology
- Post Graduate Diploma in Counselling Skills for Educators
- Post Graduate Diploma in Jain Studies
- Post Graduate Diploma in Art Management & Curatorship
- Post Graduate Diploma in Indian Psychology (Proposed)

## **RESEARCH**

### **Doctor of Philosophy (Ph.D.)**

- Biotechnology
- Commerce
- Biochemistry
- Physics
- Microbiology
- Electronics
- Computer Science
- Computer Science Engineering
- Management

- Electronics & Electrical Engineering
- Mathematics
- Mechanical Engineering
- Chemistry
- Civil Engineering
- English
- Aerospace Engineering
- Kannada
- Fire Engineering
- Hindi
- Earthquake Engineering
- Sanskrit
- Economics
- History
- Cultural Studies
- Public Governance and Administration
- Music
- Psychology
- Dance
- Political Science
- Visual Arts
- Mass Communication

- Management
- Commerce
- Ancient Indian History and Culture
- Political Science
- Psychology
- Economics
- Cultural Studies

#### **Master of Philosophy (M.Phil.)**

- Biotechnology
- Biochemistry
- Microbiology
- Computer Science
- Mathematics
- Chemistry
- Physics
- Electronics
- Kannada
- English
- Hindi
- Sanskrit

## Student Support Services

- Induction & Orientation Service
- The Library Service
- IT Services
- Technology Enabled Classrooms
- Get Online
- Accommodation
- Gymnasium
- Multi-Cuisine Cafeteria
- Auditorium
- Technology Enabled Learning (TEL)
- International Students

## Induction & Orientation Service

A full fledged induction programme is arranged for new students to help them to settle in Jain University. The range of activities include: welcome talks by President, Vice Chancellor and Centre Head; the opportunity to meet students on their degree as well as their seniors and the opportunity to join student societies and social events.

## The Library Service

The library is at the centre of academic life and provides a range of services to support & enhance student learning at the campus. A team of subject specialist librarians and other trained staff provide a wide range of services to support their information needs and help them to make the most of the resources available.

### The library offers:

- Study places for more than 100 readers
- Collections of printed books & journals
- Main Collection of books-30000 of them as well as CDs, DVDs and journals
- Online research journals
- More than 120 National & International Periodicals
- A website listing thousands of high quality internet sites grouped by subject
- PCs and laptops to access databases and the internet
- An access to other academic libraries in the city
- Self service units for borrowing / returning library books
- A wide range of quality electronic library resource
- Online reading lists

## IT Services

The University provides a comprehensive computer based service in the IT Centre with high speed internet access including wi-fi connectivity. The class rooms and laboratories are equipped with computers, with a wide range of specialist applications to support study programmes.

## Technology Enabled Classrooms

The altar of learning has always been the classroom. The classrooms at Jain University are a whole new world of discovery, equipped with high tech facilities like high speed internet connectivity. The class rooms are air conditioned, with audio visual facilities etc.

## Get Online

The Jain University website has the main reference point for exploring all of the exciting services and facilities to offer. To explore the website, visit: [www.jainuniversity.ac.in](http://www.jainuniversity.ac.in). On the website one will find all of the latest JU news, details of forthcoming events, and photographs from recent activities, examination schedules, media coverage and video gallery.

One can also be an active participant on our social media page with an easy access to facebook, twitter, flicker, orkut and youtube.

## Accommodation

The Global campus of Jain University has top quality Halls of Residence for boys & girls which accommodates 650 students. Located in pristine surroundings, resident students can

access the Library on 24 x 7 basis, swimming pool and outdoor sports facilities.

Besides, the Jain University Hostels, located across South Bangalore offer residential option for students in the heart of the city. The University provides separate spacious accommodation for boys & girls with complete food, laundry and recreational facilities. Warden supervision, hygiene, safety, kitchen facilities, medical checkups, medical insurance, telephones and state of the art gymnasium are just some of the other amenities.

## Gymnasium

The students are provided with excellent gym and yoga facilities. The simple yet comfortable environment provides a congenial setting in which regular exercise and relaxation becomes a real pleasure, in a friendly & welcoming atmosphere. The gym sports a variety of equipment which caters for virtually all sporting needs of the students from serious cardio-vascular workout to maintaining general level of fitness.

## Auditorium

The auditorium is well equipped with modern acoustics and state-of-the-art facilities to conduct seminars, corporate events, student activities and general announcements for the students.

## Technology Enabled Learning (TEL)

Jain University has been a pioneer in developing innovative learning methodologies in order to enhance the

learning abilities of a student, thus providing competitive edge in professional life. Jain University has recently launched the Technology Enhanced Learning (TEL) for its various programmes. The idea is to harness the power of technology and internet, in particular, so as to develop a unique method of learning process which is learner-centric.

## Multi-Cuisine Cafeteria

The cafeteria at is a hub of student activity, social exchange and youthful energy. Bustling with social life, it is also a place where students exchange crucial ideas, pool in effort and strategise on every day activities. It serves as a place for diverse interests, from brainstorming for competitions to relishing a hot cup of coffee.

## International Students

**International students include Foreign as well as Non-Resident Indians (NRI)**

**Foreign students:** Students holding passports issued by foreign countries, including people of Indian origin who have acquired the nationality of foreign countries, are included as foreign students.

**Non Resident Indians (NRI):** Only those Non Resident Indian students who have studied and passed the qualifying examinations from schools or colleges in foreign countries will be included as international students. This will include the students studying in the schools or colleges situated in foreign countries even if affiliated to the Boards of Secondary Education or Universities located in India, but will not include students studying in those

schools or colleges (situated in India) and affiliated to the Boards of Secondary Education or Universities of the foreign countries. Students passing the qualifying examinations from Boards or Universities located in foreign countries as external students and dependants of NRI studying in India will not be included as international students.

The Office of the International Relations helps international students to adjust and fully participate in the Jain University campus community activities. The office provides orientation to the new students prior to the start of the semester. Throughout the academic year, the office provides

- Counselling on personal, academic and financial matters
- Programme for social and cultural exchange
- Information about international employment and Organizing English classes for the international students

The Counsellors of the Office of the International Relations help international students adjust to life at Jain University. They help new students through orientation and registration and are available round the clock to assist the students in solving the problems.

## Student Welfare Services

- Career Development Centre
- Student Counselling Centre
- Human Networking Academy - Mind Management and Human Values
- Financial Aid
- Services for the Scheduled Castes / Scheduled Tribes students
- Women's Cell
- Anti Sexual Harassment Cell
- Student Grievance Redressal Cell
- Kalarava - Psychological assessment and counselling centre
- Assistantships, Fellowships, Student Insurance
- University-Industry interactions
- Equal Opportunities Cell
- E-Library

## Career Development Centre

The Career Development Centre at Jain University provides the students, the skills, confidence and networking needed to launch, and succeed in their chosen career. A combination of location, programmes, academics and industry contacts implies that the University provides head start in Profession, business, research and higher education. As a result the University has an excellent graduate employment record and maintains good relationships with a wide cross section of organizations within a variety of industry sectors. Many key employers hold student presentations at Jain University or attend our regular career fairs.

As a student, and also after graduation, one will have full access to all the facilities at the Career Development Centre. They are also helped to:

- Explore career and study options
- Develop the skills that will impress future employers
- Encouraged to achieve ambitions
- Find full and part-time jobs
- Write CVs, covering letters and application forms
- Prepare for interviews, psychometric tests and assessment centres

## Student Counselling Centre

The Counseling Centre was started keeping in mind the problems faced by the students in the tough competitive world. The Centre tries to solve issues related to learning problems and disabilities, relationship problems, personal habits, family related issues, anger management, problems related to identity

and self esteem, domestic violence and cultural / ethnic diversity. The Counselor suggests ways to cope or overcome the problems with relevant counselling and guidance. Confidentiality is maintained for the services and information. It is an altruistic effort on the part of the University and the services are not charged.

## Human Networking Academy

A team of high profile, creative, imaginative faculty of Human Networking Academy, Jain University conducts a unique, innovative and experiential course which addresses the need to equip students with requisite knowledge and skills to strengthen their mind. The motive behind conducting this course to the students of Jain University is to create an individual who is intellectually alert, morally upright and physically strong. Awareness about our national history, culture and social responsibilities and human values is created through interactive sessions, short, silent, educational and theme based films and documentaries and outbound learning programmes.

## Financial Aid

The University provides financial aid to the needy and eligible students. Merit scholarships for the meritorious students are provided every academic year. Fee concession is provided for economically weaker students and students belonging to disadvantaged groups. A special test for merit scholarship is conducted for the management students and scholarships are awarded. The eligibility for taking the test is 80% in the qualifying exam. Merit scholarships are given to students as an incentive for improving their performance.

Sports scholarships are given to outstanding sports persons in the form of fees concessions, cash incentives, sponsorships to tournaments, etc.

## Services for the Scheduled Castes / Scheduled Tribes Students

The students belonging to Scheduled Castes / Scheduled Tribes are encouraged to take admission in Jain University. They are provided with scholarships and are encouraged to take up admissions for higher studies in the University. The University facilitates the SC / ST students to get freeships from the government.

## Women's Cell

There is a separate Women's Cell comprising of senior faculty members and two student representatives from each School / Centre for creating awareness to empower Women in all fields. The cell is actively involved in empowering women (both faculty members and students) Women students are encouraged to take part in activities related to women issues which will develop awareness about women's rights, gender sensitivity, information and empowerment. In addition, the Women's Day is also celebrated on 8<sup>th</sup> March every year.

Meetings are regularly conducted to discuss various issues like women empowerment, work life balance, developing professional competence and motivating women to become career oriented.

## Anti Sexual Harassment Cell

The Cell consists of more than 50% of the

women faculty members and the rest are from the students, who are again women members. The environment is free of any kind of harassment or disregard to women. They are given equal opportunities in all areas of work. They are suitably appreciated for their sincere and dedicated work. The women students are encouraged to take part in co-curricular, extra-curricular and sports activities. There is absolutely no gender bias on the campus.

The Cell takes certain preventive measures to maintain discipline and code of conduct are formulated, such as use of separate staircase and elevator by girls and boys and regular check on the prescribed dress codes specified in the prospectus.

## Student Grievance Redressal Cell

The Student Grievance Redressal Cell aims at strengthening the teacher-student relationship and instills confidence in students. The Cell takes care of the student requirements, happenings in the class, addressing problematic issues without delay, inculcation of human values and maintaining qualitative social ambience in the premises. Each unit has a committee which reports to the Integrated Grievance Cell. Most of the grievances are sorted out in an informal manner.

## Kalarava - Psychological assessment and counselling centre

Kalarava - Psychological assessment and counselling centre of Department of Psychology, Jain University offers psychological counselling for those in need & extends services and expertise to the general

public. The centre also help postgraduate students of second year psychology to get a practical exposure on their areas of specialisation such as counselling, therapy etc. The centre offer play area therapy, life skills counselling, abuse counselling, rational emotional behaviour theory, art therapy, corporate counselling etc. The play therapy area is the special feature of 'Kalarava'. Through special games, toys and finger puppets the play therapy helps children below the age of 12 to deal with their emotions such as self-disclosure, expression and various interpersonal and intrapersonal relations.

### Assistantships, Fellowships, Student Insurance

Assistantships, Fellowships, Student Insurance and many such schemes are available to students. Academic Resource Group (ARG) provides counseling to the student's fraternity on case to case basis. It is generally, done on one to one basis either with the students or the parents.

The ARG also supports the students for paid internship activities and part time jobs as the requirement of the case may be. The staff and students of the management programme have been given the accident insurance benefit.

### University - Industry Interactions

Better interaction between technical institutions and Industry is the need of the hour. This will have great bearing on the engineering curriculum, exposure of industrial atmosphere to engineering students and subsequent placement of young graduating engineers in industries across the country.

With the advent of globalization and opening up of Indian economy to outside world, competition among industries have become stiff. To solve their engineering problems they look up now to Engineering Institutions. Similarly, there is an urgent need to prepare engineering students for jobs in multinational companies, by exposing them to newer technologies and engineering methodologies. These objectives can only be achieved well by bridging the gap between industry and the academic institute.

To promote University-Industry Interaction the following steps are being undertaken and explored:

- Establishment of University - Industry Partnership/ Interaction Cell
- Organizing Workshops, conferences and symposia with joint participation of the faculty and the industries
- Participation of experts from industry in curriculum development. Arranging visits of staff members to various industries. Professional consultancy by the faculty to industries
- Joint research programmes and field studies by faculty and people from industries
- Memoranda of Understanding between the University and industries to bring the two sides academically and strategically closer
- B.Tech and M.Tech. projects / dissertation work in industries under joint guidance of the faculty and experts from industry
- Internship in Industry
- Visiting faculty / Professors from industries
- Professorial Chairs created by industries at the University
- R&D Laboratories established by

industries at the University

- Scholarships / fellowships instituted by industries at the University for students

### Equal Opportunities Cell

The main problems faced by people viewed as disabled, or with disabilities, or of minority status, stems from disabling environmental, economic and cultural barriers. Disability and minority are therefore issues of equal rights on par with other forms of unjustifiable discrimination and prejudices. The Equal Opportunity Cell addresses the concerns of the students belonging to SC, ST, OBC and persons with disabilities (PWD)

As part of its mission statement, the EOC ensures the following:

- Affirmative and inclusive actions concerning SC, ST and OBC
- A barrier-free access to all buildings of Colleges, Departments, Libraries, Hostels and Offices of the University
- No discrimination on grounds of disability or minority status
- Reaching out to like-minded institutes and organizations dealing with similar issues
- Special learning measures in the library for people with disabilities

Information and Computer-Technology enablement aims at developing basic skills in communication and information through the use of computers mainly for those with visual impairment.

The programmes on Disability and Human Rights help in understanding the experiences of students and staff with disabilities. It is designed to bring about the issues that affect the way in which people with disability are

treated, locally as well as globally.

Jain University encourages differently-abled students to take up the programmes offered by the University. They are given preference in the use of facilities like lifts, canteens, cafeteria, library and the like. They are also allowed to record lectures in the class rooms. Visually impaired students are provided with software "George" to enable them to download material.

### E-Library

E-Library is a comprehensive collection of content of Books (Non-Book materials), Periodicals / Project Reports / Research Articles / Hand Books / Manuals / New Letters etc. Today's dynamic business, technological climate command you to know and do more, often demanding immediate knowledge and expertise. The key benefits of our e-library are:

- Access all e-books and browse the content immediately - when you need it
- Find exactly what you are looking for with a robust searching mechanism
- Place the most frequently accessed book titles on your own private bookshelf
- Facilitates easy purchase of the book after you had an opportunity to browse it online
- Bookmark the content you use most Effortlessly / create citations

## Student Involvement

- CMS Festival
- Threshold
- Abhinaya
- Lasya
- Precipice - All India Management Fest
- Taru Samskriti
- Login - Technical Fest
- Samanvaya - Commerce Fest
- Infinity
- National Cadet Corps
- National Service Scheme
- Radio Active
- E-Week India
- Corporate Expo
- Science Model Expo

Becoming involved in some of the clubs and associations can be a great way to meet people, learn new skills and hone current interests. The students can help produce the "Aventure", a quarterly magazine, participate in debating competitions, broadcast online with Radio Active and volunteer within the community and much more besides. Jain University has a diverse student body and one's association is committed to enhancing its members' student experience, groups to suit international students, undergraduates and postgraduates.

### CMS Festival

The CMS Festival is an amalgamation of all the four national level fests under the Jain University Center for Management Studies. The festivals together combine education fun and explores different facets of a human being that complement one another; the professional, the aesthetic and the personal excellence.

#### Threshold

Threshold is a fest designed and conducted exclusively for first year management students taking into consideration their level of experience and competence. It is envisioned as a platform to take students from the novice level to that of exceptional initiative.

#### Abhinaya

"Abhinaya" an annual theatre festival showcases national thespian talent as an All India Amateur Theatre Festival. It aims to

achieve integration in diversity across the nation and language. Featuring plays in Hindi, English and Kannada, Abhinaya is now poised to be the prime performance of the Academy of theatre arts at CMS. Abhinaya will help young Indians to revitalize their Indian identity develop new perspectives and mould character through discipline and passionate vision.

#### Lasya

Lasya - a colourful beginning of a cultural awakening is the first intercollegiate National level cultural event with a blend of intellect, grace and creative flair organized by CMS.

#### Precipice - All India Management Fest

Precipice is the inter collegiate meet at Jain University - CMS that puts decision making, organizational and entrepreneurial skills to the test, besides being a celebration of student life as a whole. This fest provides students with the opportunity to assess their proficiency at planning, organization, execution and competition.

### Taru Samskriti

Taru Samskriti, our annual all India inter-collegiate techno-comm-cultural fest provides an imposing platform for the students across the country to showcase their talents. This event, over the past years, has witnessed excellent country-wide participation bringing great acclaim and appreciation.

### Login - Technical Fest

Login extends you an ardent welcome to the inter college fest. This fest attracts enthralling crowd of overwhelming and enthusiastic students from all over Bangalore. Students are introduced to a techno paradise enabling them to boost up their energy levels and showcase their hidden talents.

### Samanvaya - Commerce Fest

Samanvaya is a national level business fest conducted by Jain University - School of Commerce & Management Studies, has set trends & yardstick throughout the years & has been at the forefront of conducting innovative events & attracting the best participants from all over India. This has been a nurturing ground for talent & ideas and the trend continues to grow year by year.

### Infinity

The annual intra-university cultural festival of School of Engineering and Technology spread over three days. This mega in-house event is contested branch wise with events catering to cultural, technical and management fields.

### National Cadet Corps

National Cadet Corps is a leadership training activity for students that teaches them responsibility and resourcefulness. It also helps students to develop smart thinking, quick reasoning and reaction skills and handle various situations in an adept manner. Students, who are physically fit, are encouraged to join the NCC (National Cadet Corps).

### National Service Scheme

The motto of NSS "Not Me But You" reflects the essence of democratic living and upholds the need for self-less service. NSS helps the students develop appreciation to other person's point of view and also show consideration towards other living beings. Jain University encourages students to volunteer and be a part of this social wing.

### Radio Active

The first community radio station in Bangalore, called Radio Active 90.4 MHz provides students a challenging platform to develop social awareness and broadcast programmes concerning education, sports, empowerment of marginalized communities, health awareness, environmental consciousness and such other sensitizing concerns. The students of Journalism and Mass Communication department are given the practical hands-on training by qualified instructors, in the air and craft of radio jockeying.

### E-Week India

Entrepreneurship Week India, through the National Entrepreneurship Network (NEN), brings in a week-long awareness campaign that celebrates the opportunities in today's India, and engages people in improving the entrepreneurial eco-system. Students are allowed to showcase their activities in entrepreneurship, and to spread the spirit of entrepreneurship to broader sections of the community. Between 7<sup>th</sup> and 14<sup>th</sup> of February 14 lakh young students across the country came together to embrace innovation, engage communities and get inspired to think big; to think different; to break new frontiers.

### Corporate Expo

The corporate expo is a real time experience that connects the students to the products and services marketed by corporates to the real world. This helps in encouraging students learn from practical business scenarios and introduce the concept of technical presentation and convincing abilities among the students. To build up marketing skills and help students in model building.

### Science Model Expo

It is an attempt to encourage hands on experience of creating innovative and exploratory models in science which will help the students concretize some of the concepts of science that they learn during their course of study. This outreach programme invites other Universities to participate in the exhibition with their exhibits / models.



## Sports

- Notable Alumni
- Sports Scholarship

The students will have the ideal opportunity to get involved in sports, whether it's something completely new or something already accomplished. Around 160 acres of the Jain Global Campus is devoted to sport. In addition to football and hockey pitches, tennis courts, a six hole golf course and a well designed international standard cricket ground with 5 strips of turf wicket to host any international or national level cricket match. We also have 10 practice pitches (07 turfs & 03 cement) and nets for training.

The indoor facilities are also extensive, comprising a multi-purpose sports hall with 4 badminton courts with gerflo synthetic flooring, one basketball court with wooden flooring, table tennis hall with 15 tables, billiards and snooker hall with six tables, bowling alley- 4 lane, 2 glass-backed squash courts, an activity hall (ideal for aerobics, dance, martial arts and yoga), air conditioned gyms with most modern equipment, cardio fitness centre, aerobic centre and sauna, steam and jacuzzi.

VIE an All India Sports Extravaganza is an annual event hosted by Jain University. This year the university saw an outstanding performance and participation of students from more than 50 colleges in various indoor and outdoor sporting events.

### Notable Alumni

**Pankaj Advani** - World Billiards & Snooker Champion

**Robin Uthappa** - Indian Cricketer

**Shikha Tandon** - International Swimmer

**Rehan Pooncha** - International Swimmer

**Rohan Bopanna** - International Tennis Player

**Anup Sridhar** - International Badminton Player

**Gaurav Dhiman** - Indian Cricketer

**Amit Verma** - Indian Cricketer

**Rachna Krishnamurthy** - Radio Jockey

**Rekha Nahar** - Head HR - MTR

**Prajwal Devraj** - Actor

**Manish Pandey** - Indian Cricketer

**Mayank Agarwal** - Indian Cricketer

**Sonam Deep Kaur** - Indian Basketball Player

**Kaushal R** - Indian Basketball Player

**Bopanna G N** - Indian Athlete

**Shilpa Rao** - Indian Athlete

**Rohit Havaladar** - International Swimmer

**Hari Prasad** - Indian Hockey Player

**Varun Aaron** - Indian Cricketer

**Ambi Subramanian** - Violinist

**Rakesh Manpat** - International Rifle Shooter

**Gagan Ullalmath** - Olympic Swimmer

**Kaunian Abbas** - National Cricketer

**Shreyas Gopal** - National Cricketer

### Sports Scholarship

The University offers scholarship to help athletes who are competing at national or international level to meet the extra costs of elite participation. The scheme provides a personal academic coaching, complete tuition fee waiver, free access to the university sports facilities and guaranteed university accommodation for the duration of study.

## Regulations & Policies

- University Holidays
- Discipline
- Security
- Ragging
- Prohibition of Ragging

## University Holidays 2014

<b>Date</b>	<b>Day</b>	<b>Holidays</b>
14 January	Tuesday	Id- Milad
15 January	Wednesday	Uttarayana Punya Kala Sankranti Festival
27 February	Thursday	Maha Shivaratri
31 March	Monday	Chandramana Ugadi
14 April	Monday	Dr. B R Ambedkar Jayanti
18 April	Friday	Good Friday
01 May	Thursday	May Day
02 May	Friday	Basava Jayanti
29 July	Tuesday	Khutub-E-Ramzan
08 August	Friday	Varamahalakshmi Vratha
15 August	Friday	Independence Day
29 August	Friday	Varasidhi Vinayaka Vratha
24 September	Wednesday	Mahalaya Amavasya
02 October	Thursday	Mahathma Gandhi Jayanti
03 October	Friday	Maha Navami / Ayudapooja
04 October	Saturday	Vijayadashami
08 October	Wednesday	Maharshi Valmiki Jayanti
22 October	Wednesday	Naraka Chathurdasi
24 October	Friday	Balipadyami / Deepavali
01 November	Saturday	Kannada Rajyotsava
04 November	Tuesday	Last Day of Moharam
08 November	Saturday	Kanakadasa Jayanti
25 December	Thursday	Christmas

## Discipline

Misuse or damage to University property or facilities will lead to disciplinary action which could result in termination of a student's studies and / or payment for damages and call out charges. Breach of discipline can range from a failure to comply with any Statute, Ordinance, Regulation or Rule prescribed for the conduct.

## Security

Personal property is the responsibility of the individual and the University will not accept any responsibility for items lost or stolen. Items lost or found should however be intimated at the Facilities Management desk.

## Ragging

What constitutes Ragging?

- (a) Any disorderly conduct whether by words spoken or written or by an act which has the effect of teasing, treating or handling any other student with rudeness
- (b) Indulging in rowdyism or indisciplined activities which causes or is likely to cause annoyance, hardship or psychological or physical harm or to raise fear or apprehension thereof in a fresher or a junior student
- (c) Asking the students to do any act or perform something which such student will not in the ordinary course and which has the effect of causing or generating a sense of shame or embarrassment so as to adversely affect the physique or psyche of a fresher or a junior student

- (d) Teasing, embarrassing, humiliating, assaulting or using criminal force or criminal intimidation, wrongful restraining or confining or causing grievous hurt, kidnapping, extortion or molesting or committing unnatural offences or causing death or abetting suicide, use of criminal force, criminal trespass and intimidation

## Prohibition of Ragging

- (a) Ragging within the University Campus including its Institutions / Departments and Hostels is strictly prohibited
- (b) Ragging in any form is prohibited also in the private lodges / buildings where these University students are staying
- (c) No person including students / staff / faculty shall participate or abet or propagate ragging in any form

## Punitive action by the Administration

Ragging is a cognizable offence under the law and the punishments to be meted out have to be exemplary and justifiably harsh to act as a deterrent. It may include:-

- (a) Cancellation of admission, suspension, rustication or expulsion from the University / Hostel
- (b) Expulsion from the institution and consequent debarring from admission to any other institution for a specified period

## Academic Calendar 2014 - 15

- Undergraduate Programmes
- Postgraduate Programmes

## Undergraduate Programmes

**BA / B.Com / BBA / BCA / B.Sc / B.Sc (ID) / BMS / BIBF etc.,** (All Undergraduate Programmes of First, Third and Fifth Semesters)

Date	Events
2 <sup>nd</sup> June, 2014	Commencement of classes for third and fifth semesters
6 <sup>th</sup> June, 2014	Last date for payment of fees by the candidates of second and final admission list
7 <sup>th</sup> June, 2014	Inauguration of first semester degree classes and orientation programme
9 <sup>th</sup> June, 2014	Commencement of first semester degree classes
25 <sup>th</sup> June, 2014	Last date for admission to degree courses (without penal fee)
1 <sup>st</sup> July, 2014	Last date for admission to degree courses (with penal fee)
8 <sup>th</sup> July, 2014	Submission of original documents by first semester students for admission approval
15 <sup>th</sup> July, 2014	Last date for submission of admission statement along with all relevant documents for approval of admission from the university
22 <sup>nd</sup> to 25 <sup>th</sup> July, 2014	Scrutiny and approval of admissions of first semester students
28 <sup>th</sup> July, 2014	Submission of first semester admission list to the COE
1 <sup>st</sup> August, 2014	Commencement of mid term tests
8 <sup>th</sup> Sept., 2014	Commencement of preparatory examinations
17 <sup>th</sup> & 18 <sup>th</sup> Sept., 2014	Payment of examination fees (without penal fee)
22 <sup>nd</sup> to 23 <sup>rd</sup> Sept., 2014	Audit of internal assessment marks
25 <sup>th</sup> Sept., 2014	Payment of examination fees (with penal fees)
30 <sup>th</sup> Sept., 2014	Issue of hall ticket begins
1 <sup>st</sup> October, 2014	Last date for submission of internal assessment marks
18 <sup>th</sup> Oct., to 5 <sup>th</sup> Nov., 2014	First, third and fifth semester theory examinations
27 <sup>th</sup> October, 2014	Commencement of valuations
6 <sup>th</sup> Nov., to 30 <sup>th</sup> Nov., 2014	Vacation for first, third and fifth semester students

Date	Events
3 <sup>rd</sup> week of Nov., 2014	Declaration of first, third and fifth semester results
1 <sup>st</sup> Dec., 2014	Re-opening of classes of second, fourth and sixth semester degree students

Please Note:

1. The dates under Sl. No. 3 to 4, are subject to the declaration of PUC results
2. During vacation it is mandatory for teachers to undertake valuation of theory and practical examination assigned by the University

**BA / B.Com / BBA / BCA / B.Sc / B.Sc (ID) / BMS / BIBF etc.,** (All Undergraduate Programmes of Second, Fourth and Sixth Semesters)

Date	Events
1 <sup>st</sup> Dec., 2014	Commencement of classes for second, fourth and sixth semester degree students
2 <sup>nd</sup> Feb., 2015	Mid term test begins
24 <sup>th</sup> March, 2015	Commencement of preparatory examination
26 <sup>th</sup> March, 2015	Issue of application for university examination
1 <sup>st</sup> April to 2 <sup>nd</sup> April, 2015	Payment of examination fees (without penal fees)
1 <sup>st</sup> April to 2 <sup>nd</sup> April, 2015	Audit of internal assessment marks
6 <sup>th</sup> April, 2015	Last date for payment of examination fees (with penal fees)
8 <sup>th</sup> April, 2015	Last date for submission of candidates list to controller of examinations
9 <sup>th</sup> April, 2015	Last date for submission of internal assessment marks to COE
9 <sup>th</sup> April, 2015	Issue of hall ticket begins
13 <sup>th</sup> to 30 <sup>th</sup> April, 2015	University theory examinations
20 <sup>th</sup> April, 2015	Commencement of central valuations
1 <sup>st</sup> May, 2015	Vacation for second and fourth semester students
2 <sup>nd</sup> week of May, 2015	Declaration of results
2 <sup>nd</sup> June, 2015	Re-opening of classes for III & V semesters

## Bachelor of Technology (B.Tech)

Date	Events
5 <sup>th</sup> Aug., 2014	Inauguration of I semester engineering classes for the academic year 2014-15 and commencement of III ,V & VII semester engineering classes
12 <sup>th</sup> Aug., 2014	Last date for the payment of fees for all the students
22 <sup>nd</sup> Aug., 2014	Submission of original documents by the students admitted to first semester and by the students admitted to third semester through lateral entry
10 <sup>th</sup> Sep., 2014	Commencement of first internal exam
28 <sup>th</sup> Sep., 2014	Last date for submission of change of branch and change of college applications along with relevant documents for approval of admission from the university
3 <sup>rd</sup> Oct., 2014	Last date for submission of admission statement along with all the relevant documents for approval of admission from the university
7 <sup>th</sup> Oct., 2014	Scrutiny & approval of admissions of first semester third semester (Lateral Entry ) students
12 <sup>th</sup> Oct., 2014	Submission of first semester & third semester (Lateral Entry) admission list to the controller of examinations
21 <sup>st</sup> Oct., 2014	Commencement of second internal exam
25 <sup>th</sup> Nov., 2014	Commencement of third internal exam
27 <sup>th</sup> Nov., 2014	Payment of examination fees
30 <sup>th</sup> Nov., 2014	Audit of internal assessment marks
3 <sup>rd</sup> Dec., 2014	Last date for submission of internal assessment marks to the university
10 <sup>th</sup> Dec., 2014	Last working day
15 <sup>th</sup> Dec., 2014	Commencement of university theory examinations
1 <sup>st</sup> Jan., 2015	Vacation for students
3 <sup>rd</sup> Feb., 2015	Commencement of even semester classes
10 <sup>th</sup> Mar., 2015	Commencement of first internal exam
14 <sup>th</sup> April 2015	Commencement of second internal exam
22 <sup>nd</sup> May., 2015	Commencement of third internal exam

Date	Events
24 <sup>th</sup> May 2015	Payment of examination fees
29 <sup>th</sup> May 2015	Internal assessment marks on display
4 <sup>th</sup> June 2015	Last date for submission of internal assessment marks to university
15 <sup>th</sup> June 2015	Last working day for even semester
18 <sup>th</sup> June to 3 <sup>rd</sup> July 2015	Commencement of university theory examinations
4 <sup>th</sup> July to 3 <sup>rd</sup> Aug., 2015	Vacation for students
4 <sup>th</sup> Aug., 2015	Commencement of odd semester

## Postgraduate Programmes

**M.Sc, M.Com, MA, MS (Mass Communication), MS (IT) etc.** (All Postgraduate Programmes of First & Third Semesters and First Semester of PG Diploma Programmes)

Date	Events
15 <sup>th</sup> July, 2014	Commencement of classes for third semesters
17 <sup>th</sup> July, 2014	Inauguration of first semester PG and PG Diploma courses and orientation programme
18 <sup>th</sup> July, 2014	Commencement of first semester classes
28 <sup>th</sup> July, 2014	Last date for admission to PG and PG Diploma courses (without penal fee)
4 <sup>th</sup> August, 2014	Last date for admission to PG and PG Diploma courses (with penal fee)
11 <sup>th</sup> August, 2014	Last date for submission of original documents by first semester PG and PG Diploma students
14 <sup>th</sup> August, 2014	Last date for submission of admission statement along with all relevant documents for approval of admission from the University
25 <sup>th</sup> August, 2014	Last date for approval of admission of I semester PG and PG Diploma students

Date	Events
30 <sup>th</sup> August 2014	Submission of first semester admission register to the registrar
15 <sup>th</sup> Sept., 2014	Commencement of mid term tests
14 <sup>th</sup> Nov., 2014	Commencement of preparatory examinations
21 <sup>st</sup> Nov., 2014	Payment of examination fees (without penal fee)
26 <sup>th</sup> Nov., 2014	Submission of internal assessment marks list to COE
27 <sup>th</sup> & 28 <sup>th</sup> Nov., 2014	Audit of internal assessment marks
29 <sup>th</sup> Nov., 2014	Issue of hall tickets
12 <sup>th</sup> Dec., 2014	University theory examination begins
23 <sup>rd</sup> Dec., 2014	Vacation for I semester PG and PG Diploma students
1 <sup>st</sup> week of Jan., 2015	Announcement of results of I and III semester & PG Diploma I semesters
12 <sup>th</sup> Jan., 2015	Re-opening of classes of second, fourth PG students and II semester PG Diploma students

**Please Note:**

During vacation it is mandatory for teachers to undertake theory valuation and practical examination work assigned by the University

**M.Sc, M.Com, MA, MS (Mass Communication), MS (IT) etc.** (All Postgraduate Programmes of Second & Fourth Semesters and Second Semester of PG Diploma Programmes)

Date	Events
12 <sup>th</sup> Jan., 2015	Commencement of classes for second, fourth semester PG and II semester PG Diploma students
11 <sup>th</sup> March, 2015	Mid term test begins
11 <sup>th</sup> May, 2015	Payment of examination fees (without penal fees)
15 <sup>th</sup> May, 2015	Preparatory examination begins
19 <sup>th</sup> May, 2015	Last date for payment of examination fees (with penal fees)

Date	Events
23 <sup>rd</sup> May, 2015	Issue of hall tickets
27 <sup>th</sup> May, 2015	Submission of IA marks to COE
28 <sup>th</sup> & 29 <sup>th</sup> May, 2015	Audit of internal assessment marks
9 <sup>th</sup> to 21 <sup>st</sup> June, 2015	University theory examination for II and IV semester PG and II semester PG Diploma programmes
22 <sup>nd</sup> June, 2015	Vacation for II semester students
2 <sup>nd</sup> week of July, 2015	Announcement of results of II, IV and II semester PG Diploma
14 <sup>th</sup> July, 2015	Reopening of classes to III semester students

**Master of Technology (M.Tech)**

Calendar of Events for the Academic Year 2014 - 2015

Date	Events
15 <sup>th</sup> May 2014	Issue of applications forms for admission to PG (M.Tech) programmes
21 <sup>st</sup> July 2014	Last date to submit the filled application form
3 <sup>rd</sup> August 2014	Jain university entrance test for PG (M.Tech) programmes
11 <sup>th</sup> August 2014	Provisional admission list announcement. Commencement of III semester PG classes
1 <sup>st</sup> Sep., 2014	Inauguration of first semester PG classes for the academic year 2014 - 15
10 <sup>th</sup> Sep., 2014	Last date for the payment of fees for all the students
30 <sup>th</sup> Sep., 2014	Submission of original documents by the students admitted to first semester
6 <sup>th</sup> Oct., 2014	Commencement of first internal exam
10 <sup>th</sup> Oct., 2014	Last date for submission of relevant documents for approval of admission from the University
15 <sup>th</sup> Oct., 2014	Submission of first semester admission list to the controller of examinations
17 <sup>th</sup> Nov., 2014	Commencement of second internal exam
22 <sup>nd</sup> Dec., 2014	Payment of examination fees

Date	Events
27 <sup>th</sup> Dec., 2014	Last working day
1 <sup>st</sup> Jan., 2015	Last date for submission of internal assessment marks to university
5 <sup>th</sup> Jan., 2015	Commencement of university practical examinations
12 <sup>th</sup> Jan., 2015	Commencement of university theory examinations
24 <sup>th</sup> Jan., 2015	Vacation for students
9 <sup>th</sup> Feb., 2015	Commencement of even semester classes
9 <sup>th</sup> Mar., 2015	Commencement of first internal exam
20 <sup>th</sup> Apr., 2015	Commencement of second internal exam
25 <sup>th</sup> May 2015	Payment of examination fees
29 <sup>th</sup> May 2015	Internal assessment marks display
4 <sup>th</sup> June 2015	Last date for submission of internal assessment marks to University
6 <sup>th</sup> June 2015	Last working day for even semester
8 <sup>th</sup> June - 22 <sup>nd</sup> June 2015	University theory examinations of M.Tech
25 <sup>th</sup> - 30 <sup>th</sup> June 2015	University practical examinations of M.Tech
6 <sup>th</sup> July 2015	Submission of M.Tech thesis to the university
1 <sup>st</sup> July to 3 <sup>rd</sup> August 2015	Vacation for first year students
13 <sup>th</sup> - 30 <sup>th</sup> July 2015	M.Tech viva-voce
3 <sup>rd</sup> August 2015	Commencement of odd semester

### Master of Business Administration (MBA) (First Semester & Third Semester)

Date	Events
3 <sup>rd</sup> July 2014	Induction programme and pre-term
7 <sup>th</sup> July, 2014	First semester classes begin
5 <sup>th</sup> Aug., 2014	Last date for submission of original documents by first semester students
20 <sup>th</sup> Aug., 2014	Last date for submission of admission statement of first semester with all the documents to the university for approval
30 <sup>th</sup> Aug., 2014	Last date for approval of admission of first semester students
1 <sup>st</sup> Sept., 2014	Third semester classes begin
5 <sup>th</sup> Sept., 2014	Submission of first semester admission list to COE
8 <sup>th</sup> - 12 <sup>th</sup> Sept., 2014	Mid-term test for first semester
5 <sup>th</sup> - 10 <sup>th</sup> Nov., 2014	Mid-term test for third semester
24 <sup>th</sup> Nov., 2014	Payment of examination fees by first semester students
5 <sup>th</sup> Dec., 2014	End of the I semester
6 <sup>th</sup> Dec., 2014	Issue of hall tickets to the students
8 <sup>th</sup> Dec., 2014	Submission of first semester internal assessment marks to COE
9 <sup>th</sup> Dec., 2014	Audit of first sem internal assessment marks
10 <sup>th</sup> Dec., 2014	Commencement of university exam for first semester
24 <sup>th</sup> Dec., 2014	End of the I semester exams
26 <sup>th</sup> Dec., 2014	Payment of examination fees by third semester students
29 <sup>th</sup> Dec., 2014	Submission of III semester internal assessment marks to COE
26 <sup>th</sup> Dec., 2014 to 05 <sup>th</sup> Jan., 2015	Lab Hours / Organisation study for first semester students
30 <sup>th</sup> Dec., 2014	Audit of III semester internal assessment marks
5 <sup>th</sup> Jan., 2015	End of the III semester & issue of hall tickets to the students





Notes

A series of horizontal dotted lines for taking notes on the left page.

Notes

A series of horizontal dotted lines for taking notes on the right page.

A series of horizontal dotted lines for taking notes.

## Stay CONNECTED on Social Media

[www.jainuniversity.ac.in/socialmedia](http://www.jainuniversity.ac.in/socialmedia)



Become a fan of our facebook page to get regular updates!



Follow us on twitter to hear our latest tweets!



Watch and share videos of events and other activities on YouTube



Watch and share videos and images of events and other activities on Flickr