

SINHGAD COLLEGE OF ENGINEERING, VADGAON (BK), PUNE – 41
MANDATORY DISCLOSURE

Mandatory Disclosure	14.03.2014
AICTE File No.	1-1361591122
Date & Period of last approval	01 May 2013 Valid for one year
Name of the Institution Address of the Institution	Sinhgad College of Engineering 44/1, Vadgaon (BK), Off Sinhgad Road,
City & Pin Code	Pune – 411041
State / UT	Maharashtra
Phone number with STD code	020 – 24354705
FAX number with STD code	020 – 24357243
Office hours at the Institution	9.30 am to 5.30 pm
Academic hours at the Institution	09.00 am to 05.00 pm
Email	principal.scoe@sinhgad.edu
Website	www.sinhgad.edu
Nearest Railway Station (dist in Km)	Pune railway station 13 km
Nearest Airport (dist in Km)	Pune (Lohagaon) 20 km
Type of Institution	Technical Institute
Govt /Govt aided /University Dept /Deemed Univ / Private-Self Financed Category (1) of the Institution Non Minority / Minority specify minority	Private-Self Financed
Category (2) of the Institution Co-Ed / Women only	Co-Ed
Name of the organization running the Institution	Sinhgad Technical Education Society, Pune
Type of the organization Society / Trust / PPP	Society / Trust
Address of the organization Registered with	S. No. 44/1, Vadgaon (Budaruk), Off Sinhgad Road, Pune Govt. of Maharashtra
Registration date	06.07.1993
Website of the organization	www.sinhgad.edu
Name of the affiliating University	University of Pune
Address	Ganeshkhind Road, Pune
Website	www.unipune.ernet.in
Latest affiliation period	2012 - 2013

Name of Principal / Director	Dr. S. D. Lokhnade
Exact Designation	Principal
Phone number with STD code	020 – 24354705
FAX number with STD code	020 – 24357243
Email	principal.scoe@sinhgad.edu
Highest Degree	Ph. D.
Field of specialization	Electronics & Telecommunication Engineering

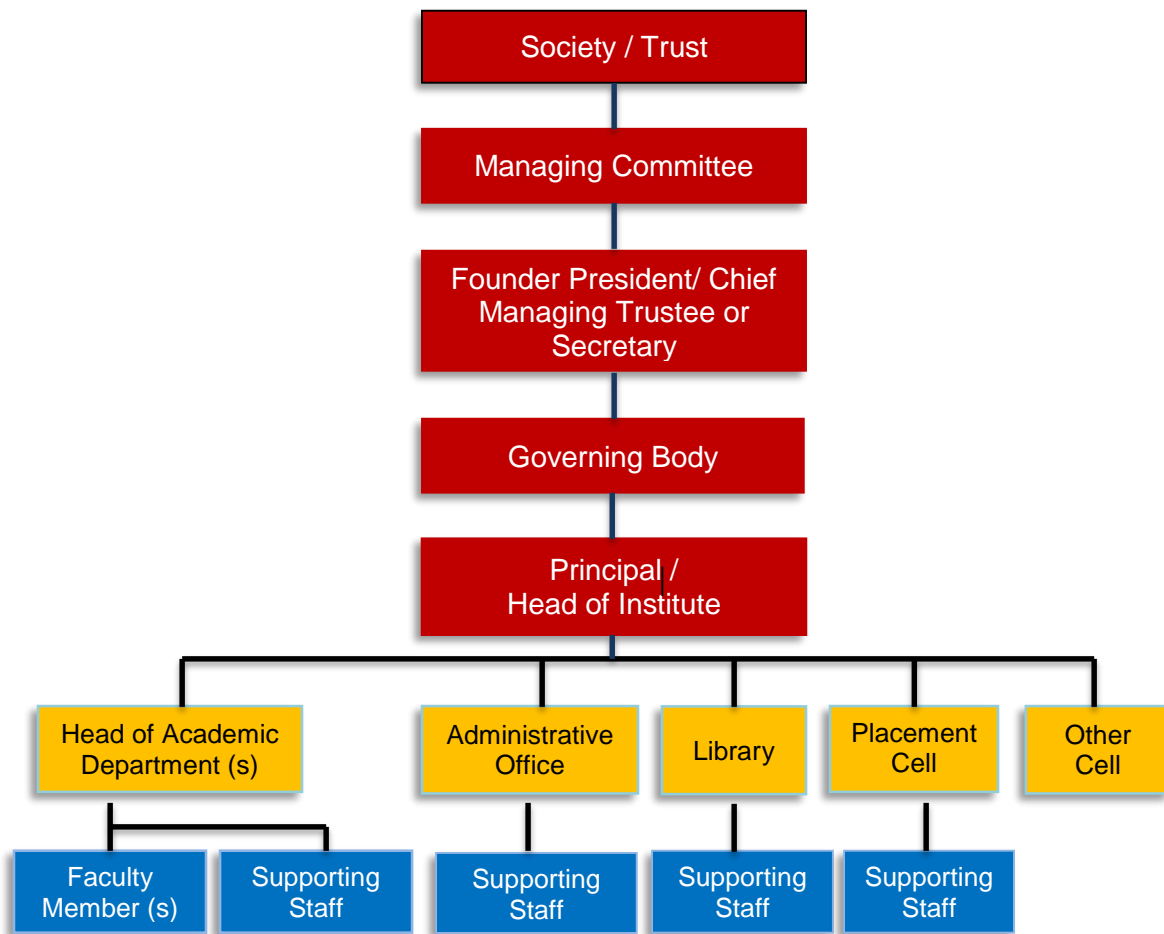
GOVERNING BOARD MEMBERS

Sr. No.	Name of the Members	Designation
01	Prof. M.N. Navale Founder – President	Chairman
02	Mrs. Dr. Sunanda M. Navale Secretary	Member
03	Ms. Rachana M. Navale Vice- President (Admin)	Member
04	Mr. Rohit M. Navale Vice- President (HR)	Member
05	Dr. Arvind Deshpande Director,	Member
06	Prof. M.G. Bhat Director (Engineering)	Member
07	Dr. S. G. Bhirud Nominee, AICTE	Member
08	Dr. S. K. Mahajan Director, Technical Education, (MS)	Member
09	Prof. P. W. Wani Nominee University of Pune	Member
10	Nominated by Govt. of Maharashtra, Mumbai	Member
11	Mr. Anil Kumar Shukla Educationist and Regional Director, WRC, Mumbai	Member
12	Dr. S. D. Lokhande Principal	Member Secretary
13	Mr. G. K. Shahani Sr. Director, (Management Program)	Special Invitee

Frequency of meetings & date of last meeting

Two meetings per year. Last meeting was held on 21.10.2013

ORGANIZATIONAL CHART AND PROCESSES



STUDENT FEEDBACK MECHANISM ON INSTITUTIONAL GOVERNANCE

The institute has mechanism to take the students feedback in three following forms

- By Faculty: Individual faculty takes the feedback from students regarding their understanding of subject and accordingly faculties do the needful.
- By HOD: At the middle of each semester feedback from students are taken online and offline. HOD along with senior faculty members evaluates the performance of faculty and if required necessary suggestions are suggested. At the end of the semester final feedback related to faculty performance, administrative staff and institute performance is evaluated.
- By Principal: Randomly principal also visits department and along with HOD they collect feedback/suggestions from faculty and students and accordingly suggestions are passed to HOD to implement the system.

FACULTY PERFORMANCE

Faculty performance is evaluated on following two feedback systems.

- Students Feedback**: - Students gives there feedback regarding course content and content delivery, approachability of the faculty and response from them after raising any query related to curriculum. This feedback related to teaching abilities of faculty is evaluated by four senior members and if required suggestions are given.
- Departmental Feedback**: - Apart from teaching, faculties' involvement in departmental and institute level activities are judged by HOD and Principal. The yearly appraisal form of faculty is evaluated by steering committee members. The appraisal form mentions faculties overall

achievements like paper publication, workshop/seminar attendance and organized, research activities and other administrative responsibilities. If required necessary suggestions are given by steering committee to improve faculties' performance.

GUARDIAN TEACHER SCHEME FOR STUDENTS:

A group of 20-25 students are assigned to one faculty who works as "Guardian Teacher" for those students in institute. The activities like student's performance, placement guidance, and academic problems are handled by guardian teacher. Faculties also inform the student's performance to their parents and time to time the response from parents is also noted.

GRIEVANCE REDRESSAL MECHANISM FOR FACULTY, STAFF AND STUDENTS

For better improvement in governance system, institute appoints different governing body members and Professor in-charge of different activities like Faculty Grievance Cell, Women Grievance Cell, Non-teaching staff Grievance Cell and students Grievance Cell etc. In these grievance cells senior faculty members, HOD and Principal are appointed while in students Grievance cell along with above members students representative also involved. Meetings of different Cells are conducted and the opportunity is provided to persons to express their grievance in front of cell. All suggestions regarding better functioning of the departments/institute are accepted and positively executed also. Every faculty, staff and students put their all grievances to Governing Body through Head of Department/ Principal and Local Managing Committee.

NAME OF THE DEPARTMENT/ COURSE/ LEVELUG / PG/1ST YEAR OF APPROVAL BY THE COUNCIL/YEAR WISE SANCTIONED INTAKE YEAR WISE ACTUAL ADMISSIONS

			AICTE Approved Intake during last 4 years								Status of Accreditation (Validity period)
Courses	1 st Year of approval by AICTE (give approval ref. no. & date)	2013 -2014		2012 – 2013		2011 – 2012		2010 - 2011			
		Sanctioned intake	Actual admissions	Sanctioned intake	Actual admissions	Sanctioned intake	Actual admissions	Sanctioned intake	Actual admissions		
UG FT	Computer Engg	F.NO.74089/(E)/ET/96 30.04.1996	120	120	120	120	120	120	120	120	Accredited
	Mechanical Engg.	F.NO.74089/(E)/ET/96 30.04.1996	240	240	240	240	180	180	60	60	Accredited
	Electronics & Telecom.	F.NO.74089/(E)/ET/96 30.04.1996	180	180	180	180	180	180	120	120	Accredited
	Chemical Engg.	F.NO.74089/(E)/ET/96 30.04.1996	60	60	60	60	60	60	60	60	Accredited
	Production Engg.	F.NO.74089/(E)/ET/96 10.09.1998	60	60	60	60	60	60	60	60	Accredited
	Information Tech.	F.NO.74089/(E)/ET/96 28.06.1999	120	120	120	120	120	120	120	120	Accredited
	Civil Engg.	F.NO.740-89/(E)/ET/96 09.09.1999	120	120	120	60	60	60	60	60	Accredited
	B. Tech. (Bio Tech.)	F. No. 740-89-300(E)/ ET /96	60	60	60	60	60	60	60	60	Applied for Accreditation
	Computer Engg (Second Shift)	WR, MS /1-3674191/2010/EOA dt.23.08.2010	60	60	60	60	60	60	60	60	In process
	Civil Engg (Second Shift)	WR, MS /1-3674191/2010/EOA dt.23.08.2010	60	60	60	60	60	60	60	60	In process
Electronics & Telecom. (Second Shift)	Western/1-720835596/2010/EOA dt.10.02.2012	60	60	60	60	-	-	-	-	In process	

AICTE Approved Intake during last 4 years

Courses	1 st Year of approval by AICTE (give approval ref. no. & date)	2013 -2014		2012 – 2013		2011 – 2012		2010 - 2011		Status of Accreditation (Validity period)
		Sanctioned intake	Actual admissions	Sanctioned intake	Actual admissions	Sanctioned intake	Actual admissions	Sanctioned intake	Actual admissions	
Mechanical Engg (Second Shift)	F. No. Western / 1-1361591122/2013/EOA/Coorrigendum - 1	60	60	-	-	-	-	-	-	In process
M.E. Electronics Engg (Digital System)	F.NO.PG/MAH/M.E./2004/ECE/0113 28.06.2004	25	25	25	25	25	25	25	25	In process
M.E. Mechanical Engg (Design Engg.)	F.NO.PG/MS/M.E./2004/MECH- 99 27.07.2004	18	18	18	18	18	18	18	17	In process
M.E. Chemical Engg.	F.NO.PG/MAH/ME/2004/CHEM /-013 28.06.2004	18	10	18	15	18	10	18	08	In process
M.E. Mechanical Engg (Heat Power)	F.NO.740-89 / 300(E)/ ET/96 24.06.2005	25	22	25	23	25	20	25	12	In process
M.E. Civil Engg, (Structural Engg)	780-89-300(E)/ET/96 30.06.2008	18	18	18	18	18	18	18	18	In process
M.E. Information Technology	780-89-300(E)/ET/96 30.06.2008	24	24	24	24	18	18	18	18	In process
M.E. E & T/C (Embadade System & VLSI)	780-89-300(E)/ET/96 30.06.2008	18	18	18	18	18	15	18	18	In process
M.E. Computer (Computer Network)	780-89-300(E)/ET/96 30.06.2008	24	24	24	24	18	18	18	18	In process
M.E. Mechanical (Mechtronics)	780-89-300(E)/ET/96 30.06.2008	18	18	18	18	18	18	18	18	In process
M.E. E & T/C (Communication Networks)	WRMS/1-3674191/2010/EOA 23.08.2010	18	18	18	18	18	18	18	18	In process
M.E. Civil Engg, (Hydrolics)	WRMS/1-3674191/2010/EOA 23.08.2010	18	18	18	18	18	18	18	18	In process
M.E. E & T/C (Signal Processing)	Western/1-720835596/2012/EOA 10.05.2012	18	18	18	18	18	18	-	-	In process
M.E. Civil Engg, (Envrionmental)	Western/1-720835596/2012/EOA 10.05.2012	18	18	18	18	18	18	-	-	In process
M.E. Mechanical (Automotive)	Western/1-720835596/2012/EOA 10.05.2012	18	18	18	18	18	18	-	-	In process
MBA	780-89-300(E)/ET/96 30.06.2008	60	60	60	60	60	60	60	60	In process

PG FT

ET CUT OFF MARKS FOR GENERAL QUOTA STUDENTS (MAHARASHTRA CET)

Name	Marks out of 200 (Maxim)	Marks out of 200 (Minm)
B. Tech Biotechnology	108	83
Chemical Engineering	119	59
Civil Engineering	149	100
Civil Engineering (II Shift)	132	103
Computer Engineering	145	80
Computer Engineering (II Shift)	134	68
Electronics & Telecommunication	144	59
Electronics & Telecommunication (II Shift)	125	56
Information Technology	130	57
Mechanical Engineering	160	69
Mechanical Engineering (II Shift)	145	83
Production Engineering	139	79

%STUDENTS PASSED WITH DISTINCTION AND % STUDENTS PASSED WITH FIRST CLASS

Sr. No.	Course	Year	Sanctioned Intake	% of Students passed out with Distinction	% of Students passed with 1st Division
01	Computer Engg	2010 – 2011	120	22.77	36.63
		2011 – 2012	120	29.13	43.70
		2012 – 2013	120	31.09	48.20
02	Mechanical Engg.	2010 – 2011	60	44.04	30.95
		2011 – 2012	180	33.33	44.00
		2012 – 2013	240	52.77	31.94
03	Electronics & Telecom.	2010 – 2011	120	40.11	34.13
		2011 – 2012	180	43.28	38.05
		2012 – 2013	180	54.61	33.07
04	Chemical Engg.	2010 – 2011	60	27.58	32.75
		2011 – 2012	60	42.10	38.59
		2012 – 2013	60	55.73	32.78
05	Production Engg.	2010 – 2011	60	18.33	50.00
		2011 – 2012	60	36.66	40.00
		2012 – 2013	60	30.98	50.70
06	Information Tech	2010 – 2011	120	21.42	48.05
		2011 – 2012	120	45.65	42.02
		2012 – 2013	120	54.07	36.29
07	Civil Engg.	2010 – 2011	60	33.80	35.21
		2011 – 2012	60	54.05	29.72
		2012 – 2013	120	40.00	30.00
08	B. Tech. (Bio Tech)	2010 – 2011	60	32.35	44.11
		2011 – 2012	60	48.93	36.17
		2012 – 2013	60	66.66	22.22

STUDENTS PLACED

Year	Discipline	Total no. of students placed through placement cell
2012 – 2013	Electronics & Telecommunication	71
	Computer Engineering	81
	Information Technology	77
	Mechanical Engineering	20
	Production Engineering	17
	Chemical Engineering	14
	Civil Engineering	15
2011 – 2012	Electronics & Telecommunication	72
	Computer Engineering	94
	Information Technology	80
	Mechanical Engineering	41
	Production Engineering	15
	Chemical Engineering	7
	Civil Engineering	25
2010 – 2011	Electronics & Telecommunication	55
	Computer Engineering	82
	Information Technology	70
	Mechanical Engineering	21
	Production Engineering	14
	Chemical Engineering	06
	Civil Engineering	21

AVERAGE PAY PACKAGE, RS. YEAR

Minimum Salary – Rs. 1, 80, 000 Per Annum

Maximum Salary Rs.16, 00,000/- Per Annum

Average Salary Rs. 3, 48,000/- Per Annum

ACCREDITATION STATUS OF THE COURSE ACCREDITED / PROVISIONALLY ACCREDITED / NOT ACCREDITED / NOT ELIGIBLE YET

Courses	Status of Accreditation
B.E. Computer Engg	Accredited
B.E. Mechanical Engg.	Accredited
B.E. Electronics & Telecom.	Accredited
B.E. Chemical Engg.	Accredited
B.E. Production Engg.	Accredited
B.E. Information Tech.	Accredited
B.E. Civil Engg.	Accredited
B. Tech. (Bio Tech.)	In Process
M.E. Electronics Engg (Digital System)	In Process
M.E. Mechanical Engg (Design Engg.)	In Process
M.E. Chemical Engg.	In Process
M.E. Mechanical Engg (Heat Power)	In Process
M.E. Civil Engg, (Structural Engg)	In Process
M.E. Information Technology	In Process
M.E. E & T/C (Embadade System & VLSI)	In Process
M.E. Computer (Computer Network)	In Process
M.E. Mechanical (Mechtronics)	In Process
M.E. E & T/C (Communication Networks)	In Process
M.E. Civil Engg, (Hydrolics)	In Process
M.E. E & T/C (Signal Processing)	In Process
M.E. Civil Engg, (Envrionmental)	In Process
M.E. Mechanical (Automotive)	In Process

M.B.A.	In Process
--------	------------

Doctoral Courses - Yes

Foreign Collaborations, if any - Yes

Professional Society Memberships - Yes

Professional activities - Yes

Consultancy activities - Yes

Grants fetched - Yes

Departmental Achievements - Yes

Distinguished Alumni - Yes

Admission quota

MH-CET (State Govt.)	All India Basis	Institute Level
65%	15%	20%

Entrance test / admission criteria

- Admissions based on valid score of MHT-CET/AIEEE score
- For Open Category Candidate - PCM Marks should be 45% and more.

Fees in rupees **Rs. 92,770/-**

Number of Fee Waivers offered **Not Applicable**

Admission Calendar

As prescribed by the Directorate of Technical Education, Maharashtra State from time to time.

Date for acceptance by the candidate: about 7 seven days.

Last date for closing of admission: As prescribed by Competent Authority from time to time.

Starting of the Academic session. : As per directives of Directorate of Technical Education, Maharashtra State

The policy of refund of the fee, in case of withdrawal, should be clearly notified: As prescribed by the Directorate of Technical Education, Maharashtra State.

PIO quota Yes

INFRASTRUCTURAL INFORMATION

COMPUTER ENGINEERING (LIBRATORY)



COMPUTER ENGINEERING (LABORATORY)



ELECTRONICS & TELECOMMUNICATION (LABORATORY)



APPLIED PHYSICS (LABORATORY)



ELECTRICAL LABORATORY (LABORETORY)



CIVIL ENGINEERING (LABORETORY)



BIOTECHNOLOGY (LABORETORY)



MECHANICAL ENGINEERING (LABORETORY)



PRODUCTION ENGINEERING (LABORETORY)



INFORMATION TECHNOLOGY (LABORETORY)



COMPUTER CENTRE



LIBRARY



REDING HALL



LIBRARY STACKING AREA



SEMINAR HALL



INDOOR SPORTS FACILITIES





HOSTEL



CAMPUS CLINIC



ACADEMIC SESSIONS

Examination system,	Semester
Period of declaration of results	within 45 days after compilation of theory Exam
Counseling / Mentoring	Yes
Career Counseling	Yes
Medical facilities	Available
Student Insurance	Available
Students Activity Body	Available
Cultural activities	Available
Sports activities	Available
Literary activities	Available
Magazine / Newsletter	Available (Srujan, Den)
Technical activities / TechFest	Available (Techtonic)
Industrial Visits / Tours	As per syllabus
Alumni activities	Yes (Yearly two meets)
Name of the Information Officer for RTI	Not Applicable
Designation	--
Phone number with STD code	--
FAX number with STD code	--
Email	--