

ARYAN CLASSES

SCRA 2014 Paper 1 – Set C

GENERAL ABILITY TEST

Time Allowed: Two Hours Maximum Marks: 200

PART-A

Synonyms

Directions : Each question in this section consists of a word printed in capital letters followed by words or phrases listed as (a), (b), (c) and (d). Choose from these the word or phrase that has most nearly the same meaning as the word in capital letters.

1. ALLOCATE

- (a) find the exact position of
- (b) lessen the pain
- (c) give up gracefully
- (d) to apportion for a specific purpose

Ans: d

2. OPTIMAL

- (a) most satisfactory
- (b) relating to vision
- (c) cheerful
- (d) not compulsory

Ans: a

3. EXASPERATE

- (a) cut off a part
- (b) annoy exceedingly
- (c) carry off
- (d) conclude

Ans: b

4. CONSERVE

- (a) save
- (b) old-fashioned
- (c) hoard
- (d) store

Ans: a

Antonyms

Directions : Each question in this section consists of a word printed in capital letters followed by words or phrases listed as (a), (b), (c) and (d). Choose from these the word or phrase that has most nearly the meaning opposite to the word in capital letters.

5. PARTIALLY

- (a) impartially
- (b) entirely
- (c) favouring one party
- (d) not together

Ans: b

6. DECEASED

- (a) paralyzed
- (b) sickly
- (c) living

(d) misled

Ans: c

7. STERILE

(a) barren

(b) productive

(c) without germs

(d) infectious

Ans: b

8. COMPATIBLE

(a) quite similar

(b) expressing admiration

(c) showing compassion

(d) unable to exist together with

Ans: d

9. CONTROVERSY

(a) debate

(b) agreement

(c) discussion

(d) contradiction

Ans: b

Comprehension

Directions : Read the following short passages. After each passage, you will find several questions based on what is stated or implied in the passages. Answer the questions that follow each passage.

Passage -1

Vehicles do not move about the roads for mysterious reasons of their Own. They move only because people want them to move in connection with the activities which the people are engaged in. Traffic is therefore a 'function of activities', and because, in towns, activities mainly take place in buildings, traffic in towns is a 'function of buildings', The implications of this line of reasoning are inescapable.

10. Line 1 of the passage means that vehicles move on the roads

- (a) for reasons difficult to understand.
- (b) to serve specific purposes of people.
- (c) in a haphazard fashion.
- (d) in ways beyond our control.

Ans: b

11. The author says that traffic is a 'function of activities'. He means that

- (a) human activities are taking place.
- (b) human activities are dependent on traffic.
- (c) traffic is not dependent on human activities.
- (d) traffic is connected with human activities.

Ans: d

12. The author suggests by his argument that

- (a) to regulate traffic more policemen have to be employed.
- (b) to regulate activities, traffic has to be controlled.
- (c) to regulate traffic, buildings have to be taken into consideration.
- (d) to understand the traffic problem we must examine the social context in which it is found.

Ans: d

13. By 'this line of reasoning', the author means

- (a) idea contained in this line.
- (b) idea contained in anyone line of his argument.
- (c) the manner of arguing.

(d) this row of printed characters.

Ans: c

Passage-2

Governments throughout the world act on the assumption that the welfare of their people depends largely on the economic strength and wealth of the community. Under modern conditions, this requires varying measures of centralized control and the help of specialized scientists such as economists and operational research experts. Furthermore, it is obvious that the strength of a country's economy is directly bound up with the efficiency of its agriculture and industry, and that this in turn rests upon the efforts of scientists and technologists of all kinds. It also means that governments are increasingly compelled to interfere in these sectors in order to step up production and ensure that it is utilized to the best advantage.

14. According to the author, the function of the government of a country is to

- (a) ensure the progress of science in all directions.
- (b) encourage mainly agricultural production.
- (c) redistribute the wealth of the community.
- (d) promote economic growth and proper utilization of resources.

Ans: d

15. Government needs the help of

- (a) scientists engaged in theoretical research only.
- (b) scientists who belong to different disciplines.
- (c) social scientists only.
- (d) scientists with a wide general knowledge.

Ans: b

16. The author states that a country's economy is

- (a) strengthened by the contribution of science to agriculture and industry.
- (b) entirely dependent on its agriculture.
- (c) chiefly based on the efficiency of its industry.
- (d) closely related to the industry of its people.

Ans: a

17. Which of the following statements best expresses the main idea of the passage?
- (a) Environmental science is the most important of sciences.
 - (b) The community as a whole is dependent on industry.
 - (c) The government is unnecessarily interfering with science and technology.
 - (d) Science and technology are increasingly coming under the control of the government.

Ans: d

Spotting Errors

Directions: In this section you have to spot errors in sentences. Read each sentence to find out whether there is an error in any underlined part. Errors, if any, are only in the underlined parts. No sentence has more than one error. Letters (a), (b) and (c) have been placed beneath the underlined parts for their identification. When you find an error in anyone of the underlined parts, indicate your response on the separate Answer Sheet in the relevant column. You may feel that there is no error in the sentence. In that case, letter (d) will signify a 'No error' response.

18. Arun explained me his problem and he asked me to help him. No error.

- (a) (b) (c) (d)

Ans: a

19. My father knows the most of the engineers working at BHEL. No error.

- (a) (b) (c) (d)

Ans: b

20. Neroli oil is an essential oil obtained from the flowers of orange trees. No error.

- (a) (b) (c) (d)

Ans: c

21. Neurotoxin attacks the nervous system and damage it. No error.

- (a) (b) (c) (d)

Ans: c

22. I went to see the coal mines in Asansol in last summer. No error.

(a) (b) (c) (d)

Ans: c

23. All his children are knowing at least one foreign language. No error.

(a) (b) (c) (d)

Ans: b

24. We don't discuss about the case in his presence. No error.

(a) (b) (c) (d)

Ans: c

25. Who do you think that did it? No error.

(a) (b) (c) (d)

Ans: c

26. He didn't know whether he will enjoy himself. No error.

(a) (b) (c) (d)

Ans: b

27. What are their reasons to say it? No error.

(a) (b) (c) (d)

Ans: c

28. I was filled with admiration by watching him. No error.

(a) (b) (c) (d)

Ans: c

29. He has only coffee in breakfast. No error.

(a) (b) (c) (d)

Ans: a

30. You had better worked harder if you want to get a promotion. No error.

- (a) (b) (c) (d)

c

31. Man does not live by bread alone. No error.

- (a) (b) (c) (d)

Ans: c

Selecting Words

Directions: In the following passage, at certain points you are given a choice of three words marked (a), (b) and (c), one of which fits the meaning of the passage. Choose the best word out of the three. Mark the letter, viz., (a), (b) or (c), relating to this word on your Answer Sheet. Examples K and L have been solved for you.

The

K

- (a) boy
(b) horse
(c) dog

was in the school in Simla.

L

- (a) She was homesick
(b) It
(c) He

Explanation: Out of the list given in item K, only, 'boy' is the correct answer because usually, a boy, and not a horse or a dog, attends school. So '(a)' is to be marked on the Answer Sheet for item K. A boy is usually referred to as 'he', so for item L, '(c)' is the correct answer. Notice that to solve the first item K, you have to read the rest of the sentence and then see what fits best.

Passage

It is not true to say that stress and anxiety are experiences of recent origin for mankind. Every era

has been an age of anxiety. A few hundred years ago, for example,

32.

(a) then

(b) here

(c) there

Ans: c

was no threat of nuclear war,

33.

(a) yet

(b) but

(c) still

Ans: a

there was the terrible danger of

34.

(a) the

(b) a

(c) that

Ans: a

plague which quite literally destroyed whole

35.

(a) populations.

(b) continents.

(c) departments.

Ans: a

Everything in human life is

36.

- (a) uncertain
- (b) impossible
- (c) unbearable

Ans: a

and contingent - you may be rich

37.

- (a) now
- (b) always
- (c) today

Ans: c

and poor tomorrow, or healthy or sick; this has been true throughout history.

Ordering of words in a sentence

Directions: In each of the items in this section, there is a sentence of which some parts have been jumbled up. You are required to rearrange these parts which are labelled P, Q, R and S to produce the correct sentence. Choose the proper sequence and mark in your Answer Sheet accordingly.

38. If you need help

P - promptly and politely

Q - ask for attendants

R - to help our customers

S - who have instructions.

The proper sequence should be

- (a) SQPR
- (b) QPSR
- (c) Q S R P

(d) SQRP

Ans: c

39. He was so kind and generous that

P - he not only

Q - made others do so

R - but also

S - helped them himself.

The proper sequence should be

(a) P S R Q

(b) SPQR

(c) PR S Q

(d) QPRS

Ans: a

40. People

P - at his dispensary

Q - went to him

R - of all professions

S - for medicine and treatment.

The proper sequence should be

(a) QPRS (b) RPQS

(c) RQSP (d) QRPS

Ans: c

41. Little

P - that he had been let down

Q - stood by all these years

R - did he realize

S - by a colleague whom he had.

The proper sequence should be

(a) RPSQ

(b) RSQP

(c) QSRP

(d) QSPR

Ans: a

42. There was

P - needed for its everyday life

Q - a time when each family

R - for itself most of the things it

S - actually produced.

The proper sequence should be

(a) Q R S P

(b) RQPS

(c) RSPQ

(d) QSRP

Ans: d

43. We have to

P - as we see it

Q - speak the truth

R - there is falsehood and darkness

S - even if all around us.

The proper sequence should be

- (a) RQSP
- (b) QRPS
- (c) RSQP
- (d) QPSR

Ans: d

44. This majestic mahogany table

P - belongs to an old prince

Q - which has one leg missing

R - who is now impoverished

S - but proud of his background.

The proper sequence should be

- (a) P Q S R
- (b) QRSP
- (c) P R S Q
- (b) QPRS

Ans:

45. By this time

P - at the railway station

Q - reported mass looting

R - reports of violence were flooding in

S - while police dispatches.

- (a) RSPQ
- (b) SPRQ
- (c) SQRP
- (d) RSQP

Ans: b/d

46. It would

P - appear from his statement

Q - about the policy of the management

R - in dealing with the strike

S - that he was quite in the dark.

The proper sequence should be

(a) R S P Q

(b) PSQR

(c) RQPS

(d) PRQS

Ans: b

Sentence Improvement

Directions : Look at the underlined part of each sentence. Below each sentence are given three

possible substitutions for the underlined part. If one of them (a), (b) or (c) is better than the underlined part, indicate your response on the Answer Sheet 51. against the corresponding letter. If none of the substitutions improves the sentence, indicate (d) as your response on the Answer Sheet.

47. He has gone to Kolkata last week.

(a) went to Kolkata last week

(b) has left for Kolkata last week

(c) has proceeded to Kolkata last week

(d) No improvement

Ans: a

48. If he would receive my letter in time, he would be able to change his plans.

(a) If he will receive my letter in time

- (b) If he receives my letter in time
- (c) Since he would receive my letter in time
- (d) No improvement

Ans: b

49. I have been ringing the doorbell five times but no one has answered.

- (a) I had been ringing the doorbell .
- (b) I am ringing the doorbell
- (c) I have rung the doorbell
- (d) No improvement

Ans: d

50. Raman is having a good ear for music.

- (a) Raman has a good ear
- (b) Raman is owning a good ear
- (c) Raman is possessing a good ear
- (d) No improvement

Ans: a

51. The new medicine made the children get better.

- (a) the children to get better
- (b) the children getting better
- (c) the children got better
- (d) No improvement

Ans: d

52. When he will arrive, the band will play the National Anthem.

- (a) After he will arrive aryan classes
- (b) If he would arrive

- (c) When he arrives
- (d) No improvement

Ans: c

53. I didn't do it with the hopes to get something.

- (a) with the hope to get something
- (b) with the hope of getting something
- (c) with the hope for getting something
- (d) No improvement

Ans: b

54. This inheritance of ours is something to be proud of.

- (a) This inheritance of our
- (b) Our this inheritance aryan classes
- (c) This inherited of ours
- (d) No improvement

Ans: a

55. He will break up the marriage unless the promised dowry is paid to him before the ceremony starts.

- (a) The marriage will break down
- (b) The marriage will be broken up by him
- (c) He will break off the marriage
- (d) No improvement

Ans: b

56. The cell usually comprises of two distinct forms of protoplasm.

- (a) comprised of
- (b) comprises
- (c) comprise of

(d) No improvement

Ans: d aryan classes

57. The Planning Commission is drawing up a scheme for involve the scientists of the country.

(a) for involvement

(b) in involvement of

(c) to involve

(d) No improvement

Ans: c

58. A Magnesium-Aluminium alloy has been developing for covering Uranium fuel elements in certain types of nuclear reactors.

(a) have been developed

(b) is being develop

(c) has been developed

(d) No improvement aryan classes

Ans: c

59. TU-124 aircraft consumed excessive fuel comparing to modern fuel-efficient jets.

(a) compare with

(b) compared to

(c) compared for

(d) No improvement

Ans: b

60. The heads of safety matches usually contain some Sulphur or Charcoal.

(a) head of safety matches

(b) heads of safety match

(c) head of safety match

(d) No improvement

Ans: d

PART-B

61. Match List I with List II and select the correct answer using the code given below the Lists :

<i>List I (Cell type)</i>	<i>List II (Most important function)</i>
A. RBC	1. Immunity
B. Neutrophils	2. Oxygenation
C. Eosinophils	3. Clotting
D. Platelets	4. Mechanism of allergy

Code:

	A	B	C	D
(a)	3	4	1	2
(b)	3	1	4	2
(c)	2	1	4	3
(d)	2	4	1	3

Ans: c

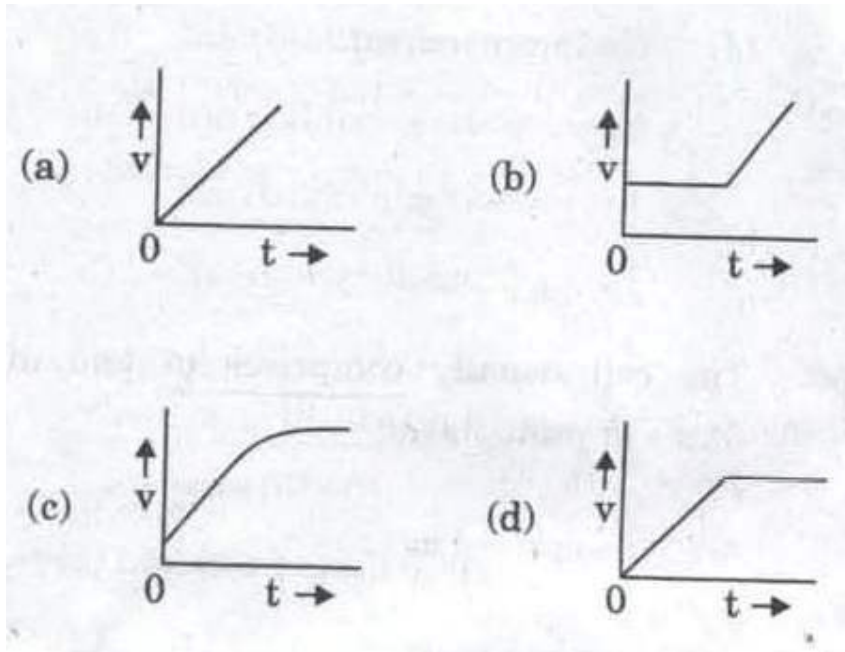
62. Under which of the following conditions is the phenomenon of 'solar constant' the highest?

- (a) When the rays of the Sun travel a greater distance
- (b) When the output of the energy is less
- (c) When there is a presence of larger amount of dust particles, water vapour, salt and smoke
- (d) When the duration of sunlight is more

Ans: c

63. A tall cylinder is filled with viscous oil. A marble is dropped from the top with some non-zero initial velocity. From the following plots, indicate the one that best represents

the velocity (v) of the marble as a function of time (t) :



Ans: c

64. Which of the following statements relating to District Council under Article 244 (2) of the Constitution of India is/are correct?

1. The District Council shall have power to make laws with respect to marriage and divorce.
2. The District Council may establish, construct, or manage primary schools, dispensaries and markets, etc.

Select the correct answer using the code given below:

- (a) 1 only
(b) 2 only
(c) Both 1 and 2 Aryan Classes www.aryanclasses.com
(d) Neither 1 nor 2

Ans: c

65. Which one among the following is not associated with World Trade Organization?

- (a) Dunkel Treaty
(b) Reciprocity

(c) TRIPS, TRIMS and Services

(d) OECD and NIEO

Ans: c

66. Consider the following statements :

1. The word 'caste' is derived from the Portuguese word 'casta' which means a group.

2. In India, caste is not determined by birth.

3. Tribe is not a form of social stratification like caste and class.

Which of the statements given above is/are *incorrect*?

(a) 1 and 3

(b) 3 only

(c) 2 only Aryan Classes www.aryanclasses.com

(d) 2 and 3

Ans: c

67. The Government's priority in the first Five Year Plan of India was

(a) Industry

(b) Agriculture

(c) Technology

(d) Education

Ans: b

Q 68: In a Mendelian experiment, breeding of tall pea plants (TT) bearing violet flowers (WW)

was done with short pea plants (tt) bearing white flowers (ww), The progeny all bore violet flowers, but almost half of them were short. The genetic make-up of the tall parent can be

1. TTWW

2. TTww

3. TtWW Aryan Classes www.aryanclasses.com

4. TtWw

Which of these make-ups is/are correct?

(a) 1 and 2 only

(b) 2 and 3 only

(c) 4 only

(d) 3 only

Ans:d

69. During December and January, North India experiences excessive cold weather because

1. these areas being far away from the moderating influence of sea, experience continental climate.

2. the cold winds coming from Caspian Sea and Turkmenistan bring cold wave over the northern parts of India. Aryan Classes

3. low pressure develops over North India due to high temperatures.

4. high pressure develops over North India due to low temperatures.

Select the correct answer using the code given below:

(a) 1 and 4 only

(b) 2 and 3 only

(c) 1,2 and 4

(d) 3 only

Ans:c

70. Consider the following sequence:

U	CU	UCU	UCUC
---	----	-----	------

If the sequence is continued, which one among the following figures will come next ?

UCUCU	UCUC	UCUC	UCUC
U	U	U	U

(a)

(b)

(c)

(d)

Ans:d

71. Which one among the following will be the longest railway tunnel of the world which is scheduled to be operational in the year 2016 ?

- (a) Pir Panjal Railway tunnel, India
- (b) South Liangshan tunnel, China
- (c) Railway tunnel beneath the Swiss Alps, Switzerland
- (d) Seikan tunnel, Japan

Ans:c

72. Which among the following is/are the function/functions of religion?

1. It performs a supportive function, by providing consolation, reconciliation and relief from anxiety or fear.
2. Religion may perform a social control function.
3. It may be a source of social change.

Select the correct answer using the code given below:

- (a) 1only
- (b) 1,2 and 3

(c) 1 and 3 only Aryan Classes www.aryanclasses.com

(d) 2 and 3 only

Ans:b

73. What do you understand by the concept of 'social control'?

1. Social control is the control to limit deviance and maintain social order.
2. When deviant acts are serious, informal controls are usually imposed.
3. The -informal controllers are specifically appointed by the State, and they can be expected to punish deviants severely.

Select the correct answer using the code given below:

- (a) 1 only
- (b) 2 and 3 only
- (c) 1,2 and 3
- (d) 1 and 2 only

Ans:d

74. If a 17-year-old male has still not undergone the changes of puberty, he is likely to be deficient in Aryan Classes www.aryanclasses.com

- (a) Growth hormone
- (b) Testosterone
- (c) Progesterone
- (d) Oestrogen

Ans:a

75. Which of the following is/are the characteristics of cyclone?

1. It is a system of low atmospheric pressure in which the barometric gradient is steep.
2. It is a wind system in which winds are blowing inwards in an anti-clockwise" direction in the 'N' hemisphere -and in a clockwise direction in the 'S' hemisphere.

3. It is an air movement which is clockwise in the 'N' hemisphere and anti-clockwise in the 'S' hemisphere.

4. A system of atmospheric pressure in which the isobars indicate high pressure at the centre and low pressure at the periphery.

Select the correct answer using the code given below:

(a) 1 and 4

(b) 1 and 2

(c) 2 only

(d) 2 and 3 Aryan Classes www.aryanclasses.com

Ans:b

76. Viruses are parasitic, having DNA / RNA but they can be crystallized and lack respiration.

Thus they are treated as

(a). living materials

(b) non-living materials

(c) both living and non-living materials

(d) cellulose

Ans:c

77. Consider the following statements:

1. Rowlatt Act resulted in the tragedy of Jallianwala Bagh.

2. Gandhiji shot into prominence in the Indian politics after Jallianwala Bagh tragedy.

3. Gandhiji launched large scale mass movements in India before 1920.

Which of the statements given above is/are correct ?

(a) 1 only

(b) 1 and 2 only

(c) 3 only

(d) 1,2 and 3 Aryan Classes www.aryanclasses.com

Ans:b

78. Consider the following statements:

1. The introduction of railways in India gave rise to the feeling of nationalism in India.
2. The spread of the Western (English) education encouraged the emergence Of nationalist feelings in India.
3. The emergence of Indian nationalism was accompanied by socio-religious movements that glorified Indian culture.

Which of the statements given above is/are correct?

- (a) 1 only
- (b) 1 and 2 only
- (c) 2 and 3 only
- (d) 1,2 and 3

Ans:c

79. Which one of the following pairs of disease and nature is/are correctly matched?

1. Scurvy: Nutritional
2. Malaria: Degenerative Aryan Classes www.aryanclasses.com
3. Haemophilia: Hereditary

Select the correct answer using the code given below:

- (a) 1,2 and 3
- (b) 1and 3 only Aryan Classes www.aryanclasses.com
- (c) 1 and 2 only
- (d) 2 only

Ans:a

80. Minerals are deposited and accumulated in

- (a) sedimentary rocks
- (b) metamorphic rocks

(c) igneous rocks

(d) None of the above Aryan Classes www.aryanclasses.com

Ans:a

81. Moment of inertia of a body does *not* depend on

(a) mass

(b) shape Aryan Classes www.aryanclasses.com

(c) angular velocity

(d) axis of rotation

Ans:c

82. The Buddha laid down a 'code of conduct' for his followers. Which one among the following

was *not* a part of his 'code of conduct' ?

(a) Do not use intoxicants Aryan Aryan Classes www.aryanclasses.com Classes www.aryanclasses.com

(b) Do not indulge in corrupt practices

(c) Do not marry

(d) Do not covet the property of others

Ans:c Aryan Classes www.aryanclasses.com

83. Name the last Mauryan ruler who was assassinated by his general Pushyamitra Shunga.

(a) Chandragupta Aryan Classes www.aryanclasses.com

(b) Bindusara

(c) Brihadratha

(d) Kunal Aryan Classes www.aryanclasses.com

Ans:c

84. Indicate the proper order of steps in the nutrition process.

(a) Digestion - Assimilation - Absorption - Egestion

(h) Digestion - Absorption - Assimilation- Egestion

(c) Absorption - Assimilation - Egestion -Digestion

(d) Assimilation - Absorption - Digestion -Egestion

Ans: b Aryan Classes www.aryanclasses.com

85. Koderma in Jharkhand is the leading producer of

(a) . Bauxite

(h) Mica

(c) Iron ore

(d) Copper

Ans: b

86. In order to avoid the buckling of a beam, one has to

1. use material of low Young's modulus.

2. use material of high Young's modulus.

3. construct the beam with large load-bearing surface and enough depth.

4. construct the beam with small load-bearing surface and enough depth.

Select the correct answer using the code given below:

(a) 1 only

(h) 2 only

(c) 2 and 3 Aryan Classes www.aryanclasses.com

(d) 1 and 4

Ans: c

87. Consider the following statements about the Gandhara art :

1. In the Gandhara art the images of Buddha were made in the Graeco-Roman style.

2. The hair of Buddha was not fashioned in the Graeco-Roman style.

3. The Gandhara art spread to Mathura and produced several images of Mahavira.

Which of the statements given above is/are correct?

- (a) 1 only
- (h) 1 and 3 only
- (c) 2 and 3 only
- (d) 1,2 and 3

88. Consider the following statements concerning temple architecture in India:

1. A pillarless hall was called *mandap*.
2. Temple architecture in the South attained its climax under the Cholas.
3. The style of architecture which flourished under the Cholas is called *Dravida*.

Which of the statements given above is/are *incorrect*?

- (a) 1 only
- (b) 1 and 2
- (c) 2 and 3
- (d) 3 only

Ans: a

89. During the production of Yoghurt from Milk, the system is found to produce

- (a) Citric acid
- (h) Lactic acid
- (c) Formic acid
- (d) Acetic acid

Ans: b

90. Which one among the following is the main form of degradation in irrigated areas?

- (a) Gully erosion
- (h) Wind erosion

(c) Salinisation of soils Aryan Classes www.aryanclasses.com

(d) Siltation of land

Ans: c

Directions: (For the next three items)

In each of the following three items below, there is a statement followed by two courses of action I and II. Which one among the following courses of action logically follows?

(a) If only I follows

(b) If only II follows

(c) If either I or II follows

(d) If neither I nor II follows

91. Statement:

An increasing number of graduates produced by Indian universities is unemployable.

Course of action I :

Colleges and institutes of higher learning should be given greater autonomy to decide course content.

Course of action II :

Foreign universities should be encouraged to set up campuses in India.

Ans: a

92. Statement:

Heavy rains hit the State during October, just before the State Assembly elections and caused heavy damage to standing crops in most parts of the State.

Course of action I : Aryan Classes www.aryanclasses.com

Elections should be postponed to give candidates the opportunity to campaign.

Course of action II :

Aryan Classes www.aryanclasses.com

The Government should announce a relief package for those who are affected.

Ans: b – (considering election commission allowed)

93. Statement:

Cell phone users have found that tariff plans are not as attractive as promoted by telephone companies and complained to the regulatory authority about the same.

Course of action I :

The regulatory authority should direct telephone companies to be transparent on the tariff structure of all plans.

Course of action II :

The Government should restrict the number of telephone companies operating in the country.

Ans: a

94. Which of the following statements about 'communalism' are correct?

1. It refers to aggressive chauvinism based on religious identity.
2. A communal person or state is one that does not favour any particular religion over others.
3. A communalist mayor may not be a devout person, and a devout believer mayor may not be a communalist.
4. It is an aggressive political ideology linked to religion.

Select the correct answer using the code given below:

- (a) 1, 2 and 4
- (b) 3 and 4 only Aryan Classes www.aryanclasses.com
- (c) 1,2 and 3
- (d) 1,3 and 4

Ans: d

95. The term 'hot money' is used to refer to

- (a) Currency + Reserves with the RBI

- (b) Net GDR receipts
- (c) Net Foreign Direct Investment
- (d) Foreign Portfolio Investment

Ans: d

96. The loss of the ozone layer has serious implications for the quality of the environment because

- (a) Ozone (O₃) protects organisms from UV rays
- (b) Depleted ozone layer causes rain water to have a lower pH
- (c) Loss of the ozone layer causes the Sun's rays to get trapped in the atmosphere
- (d) Depleted ozone layer may lead to increase in dissolved oxygen content in water bodies

Ans: a Aryan Classes www.aryanclasses.com

97. What do you understand by caste structure in India ?

1. Caste is a system of social stratification which lies at the very root of Indian social structure.
2. It is a pattern of social behaviour in which groups and individuals are guided by a prescribed set of norms, values and sanctions.
3. In this system, individuals are born into a certain caste and thereby acquire the role and status with that caste identity.

Select the correct answer using the code given below:

- (a) 1 and 3 only
- (b) 2 only
- (c) 1,2 and
- (d) 2 and 3 only

98. Which of the following statements regarding relative humidity is/are correct?

1. It is an index of the amount of water vapour present in the atmosphere.
2. It measures the readiness with which vapour will condense from the air.

3. The value of the relative humidity varies inversely with temperature and rises during nights.
4. It is the ratio of the mass or weight of water vapour per unit volume of air measured in grams per cubic meter.

Select the correct answer using the code given below:

- (a) 1 and 4 only
- (b) 2 and 3 only
- (c) 4 only
- (d) 1,2 and 3

Ans: d

99. Balanced growth implies that

- (a) growth of no sector is impeded by inadequate growth in another sector
- (b) supply and demand grow at the same pace
- (c) growth rates of income and consumption are the same
- (d) growth rate of savings is equal to growth rate of investment

Ans: a/d

100. The Inter Tropical Convergence Zone (ITCZ) normally occurs near the

- (a) Equator
- (b) Tropic of Cancer
- (c) Tropic of Capricorn Aryan Classes www.aryanclasses.com
- (d) Arctic Circle

Ans: a

101. Gross Domestic Product (GDP) is called 'gross' because its computation does *not* exclude

- (a) depreciation of capital (consumption of capital in production process)
- (b) subsidies on consumption of goods
- (c) earnings of foreign factors in host country

(d) impact of price rise

Ans: a A (Gross means depreciation of capital stock is not subtracted. If depreciation is subtracted, it becomes Net Domestic Product)

102. In India, fiscal deficit shot up from 2.5 percent of Gross Domestic Product (GDP) in 2007 - 08 to 6.0 per cent of GDP in 2008 – 09 (global recession year) because, as a ratio of GDP

(a) revenue receipts rose faster than revenue expenditure Aryan Classes
www.aryanclasses.com

(b) revenue receipts fell and revenue expenditure on subsidies rose

(c) capital receipts rose while revenue receipts fell

(d) revenue receipts and non-debt receipts fell while revenue expenditure shot up

Ans: d

103. In India, which one among the following taxes/duties now follows a negative list approach?

(a) Customs duty

(b) Excise duty

(c) Service tax Aryan Classes www.aryanclasses.com

(d) Income tax

ANs: c (As per negative list-based approach, services such as metered taxis, auto-rickshaws, transport of goods or passengers and transmission and distribution of electricity by distribution companies will not come under the service tax net)

104. Which one among the following is *not* a correct demographic fact of India for recent years?

(a) Female life expectancy at birth is lower than its male counterpart

(b) Female infant mortality is higher than its male counterpart

(c) Female literacy rate is lower than its male counterpart

(d) Female birth rate is lower than its male counterpart

Ans: a

105. In recent years, shares of agriculture, industry and services in Gross Domestic Product (GDP) of India have roughly reached the ratio of (respectively)

(a) 20 : 20 : 60 Aryan Classes www.aryanclasses.com

(b) 15: 25: 60

(c) 25: 20: 55

(d) 25: 25: 50 Aryan Classes www.aryanclasses.com

Ans: b - roughly

106. The property of 'surface tension' arises due to

1. excess potential energy of the molecules at the surface in comparison to their potential energy at the interior.
2. less potential energy of the molecules at the surface in comparison to their potential energy at the interior.
3. hydrogen bonds present in liquid molecules.
4. Brownian motion of the liquid molecules.

Select the correct answer using the code given below:

(a) 1 only

(b) 2 only

(c) 1 and 3

(d) 2 and 4

Ans: c

107. Digambara tradition mentions the southward migration of the Jaina monks in the wake of

an impending famine. Which one among the following was the leader of the migrant group?

Select the correct answer using the code given below:

(a) Bhadrabahu

(b) Sthalbahu

(c) Shivabhuti

(d) Yashovijaya Aryan Classes www.aryanclasses.com

Ans: a

108. Consider the following statements about Thomas Roe and William Hawkins:

1. They were ambassadors of the East India Company
2. They visited the Court of Akbar.
3. They were Jesuit missionaries and visited to propagate Christianity in India.

Which of the statements given above is/ are correct?

- (a) 1 only
- (b) 1 and 3
- (c) 2 only
- (d) 3 only

Ans: a

109. Which of the following are the instruments of Parliament for the 'daily and periodic assessment' of ministerial responsibilities?

1. Question hour
2. Adjournment motion and Calling attention motion
3. Motion of Thanks on the Address by the President
4. Parliamentary Committees

- (a) 1, 2 and 3 only
- (b) 2,3 and 4 only
- (c) 1 and 4 only
- (d) 1,2,3and4

Ans: c Aryan Classes www.aryanclasses.com

110. Nosocomial infection is

- (a) acquired from 'nose' of humans

Aryan Classes www.aryanclasses.com

(b) acquired from nasal cavity of animals

(c) hospital acquired

(d) an endemic disease

Ans: c

111. What type of forest can be found in western coast, upper Assam, lower slopes of eastern Himalaya, Orissa coast and neighbouring hills?

(a) Dry tropical forest

(b) Alpine forest

(c) Moist tropical forest

(d) Montane sub-tropical forest

Ans: c

112. Among the following, which one statement about friction is *not* true?

(a) Friction reduces a machine's efficiency by robbing some of its power.

(b) Sliding friction is less than rolling friction.

(c) Friction accompanies all motions.

(d) A heavy object has more friction than a lighter one

Ans: b Aryan Classes www.aryanclasses.com

113. The term of office of Rajya Sabha members begins in case of Members elected/nominated

1. biennially, from the date on which their names are notified by the Government of India in the Official Gazette.

2. to fill a casual vacancy, from the date of publication in the Official Gazette of the declaration of election of such persons.

Select the correct answer using the code given below:

(a) 1 only

(b) 2 only Aryan Classes www.aryanclasses.com

(c) Both 1 and 2

(d) Neither 1 nor 2

Ans: b

114. Consider the following statements:

1. A Gram Sabha may exercise such powers and perform such functions at the village level as the Legislature of a State may, by law, provide.

2. Parliament may; by law, make provisions with respect to maintenance of accounts by Panchayats.

Which of the statements given above is/are correct?

(a) 1 only

(b) 2 only

(c) Both 1 and 2

(d) Neither 1 nor 2

Ans: a, state legislature not parliament

115. Which one among the following is *not* lighter one, responsible for 'green house effect' ?

(a) Water

(b) Carbon dioxide

(c) Nitrogen

(d) Chlorofluorocarbons

Ans: c

116. Which one among the following industries uses Bauxite as a raw material ?

(a) Steel

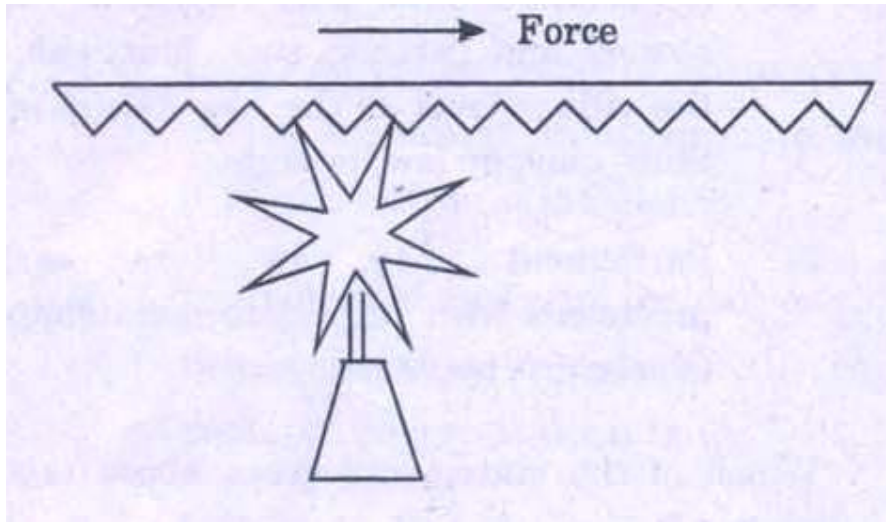
(b) Electronics

(c) Aluminium

(d) Information technology

Ans: c

117. Look at the following diagram and suggest in which direction the wheel will move:



- (a) Clockwise
- (b) Anti-clockwise
- (c) Clockwise when applied force is lower
- (d) Anti-clockwise when applied force is higher

Ans: a

118. Which one among the following statements about the legislatures of India is *not* correct?

- (a) The President may prorogue the Houses or either House of Parliament and dissolve the Lok Sabha.
- (b) In the case of the State Legislatures, it is the Governor who may from time to time prorogue the Houses or either House of the Legislature and dissolve the Legislative Assembly.
- (c) The proposal to summon, prorogue or dissolve the Lok Sabha may be made by the Prime Minister with or without the consultation of the Cabinet.
- (d) In no case should the time period intervening between the last sitting in one session of Parliament and the date appointed for its first sitting in the next session exceed thirty-six weeks. Aryan Classes www.aryanclasses.com

Ans: d

119. Whether a Member of Lok Sabha has become subject to any disqualification will be decided by

1. the President on the ground of a corrupt practice at elections.
2. the Speaker on the ground of defection.

Select the correct answer using the code given below:

- (a) 1 only
- (b) 2 only
- (c) Both 1 and 2
- (d) Neither 1 nor 2

Ans: b

120. Which one among the following is *not* a function of a pressure group?

- (a) Formation of public opinion
- (b) To influence the election process Aryan Classes www.aryanclasses.com
- (c) To work as a link between the government and the public Aryan Classes www.aryanclasses.com
- (d) To capture political power by entering elections Aryan Classes www.aryanclasses.com

Ans: d