

Satyajit Ray Film & Television Institute

Sample Question Paper (not actual, tentative for reference only)

APTITUDE TEST

Full Marks 100

Duration – 3 Hours

Segment 1

(Evaluated for 70 marks)

Logical Reasoning, Mental Ability and Creativity Aptitude

Group A

(2marks eachX15=30, eight sample questions are given here)

1. Please find below three different typefaces in groups. Identify those three groups and put them together in the boxes below 2

A K h S

R W X V

T m G c

--	--	--

2. Floors A and B are equal in area, If A is 12 feet X 8 feet and the width of B is 6 feet, what is the 2

length of B?

- a) 16 feet b) 12 feet c) 8 feet d) 15 feet

3. Find the word (from the group below) that identifies the underlined word 2

UNIQUE

- a. Artistic b. Innovative c. Novel d. Inspired e. Original

4. *Brightness* is to intelligence as *sensitivity* is to 2

- a. Knowledge b. Compassion c. Openness d. Sentimental

5. Statement: Cases of food poisoning due to consumption of liquor are increasing in Kolkata suburbs. 2

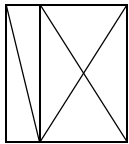
Assumption:

1. More people consume liquor in Kolkata suburbs
2. There are many unauthorized spurious liquor shops in Kolkata suburbs

Chose your answer from below

- a. Only assumption1 is implicit
- b. Only assumption 2 is implicit
- c. Either 1 or 2 is implicit
- d. Both 1 and 2 are implicit
- e. Neither 1 nor 2 is implicit

6. How many sets of equal triangles you find inside the rectangle (1x2) 2



- a. 6 b. 2 c. 3 d. ?

7. When sunlight is the strongest, the feel is blue 2

When it full moon, the feel is ...?...

8. Identify two major colours in the sketch 2



Group B

(5marks eachX8=40, one sample question is given here)

9. Write a brief synopsis of a short film you imagine with reference to the illustration below within 30 words only. Give a single-word title to the film. 5



Segment 2

SPECIFIC AREA APTITUDE TEST

evaluated for 30 marks

1. PRODUCING FOR FILM & TELEVISION

Group A

Answer any one of the following

20marks eachX1 = 20

1. Suppose a script needs three major outdoor locations. Tell us – who all would go for location hunting and what are the possible reasons for each of them to go. 20
2. In a company head office comprising several inter-departments, what should be the role of a General Manager? 20
3. What is Mainstream and what is Parallel cinema? Do you think this division exists today? 20

Group B

Write short notes on any two of the following (each topic carries 5 marks):
5marks eachx2 = 10

- | | |
|-------------------------|---|
| 1. Five year planning | 5 |
| 2. Satellite release | 5 |
| 3. Niche market | 5 |
| 4. Collateral guarantee | 5 |

2. DIRECTION & SPW

1. Give the names of the Producer, Director, Screenplay Writers, Director of Photography, Sound Designer, Editor, Music Director of a recent film you have seen in an auditorium and found "interesting". 10

2. From a given Dialogues between two persons. Write briefly about the following

- i) The location & atmosphere where it's taking place.
- ii) Describe the two characters and their relationship. Description should include their physical description, age & costumes. 10

3. Give a list of 10 images with associated sound in chronological orders, depicting a massive power failure in a middle of a busy working day in your City or Town. 10

3. EDITING

Group A

1. Assess the following photograph. Do you find anything interesting that will build up a small narrative? Tell your story within 12 sentences. 4



2. Write your comments on a scene you consider outstanding for its editing from a film you have seen recently. 6

Group B

1. Formulate a story out of the following combination of five words. (150 words) 20

CROW

WATER

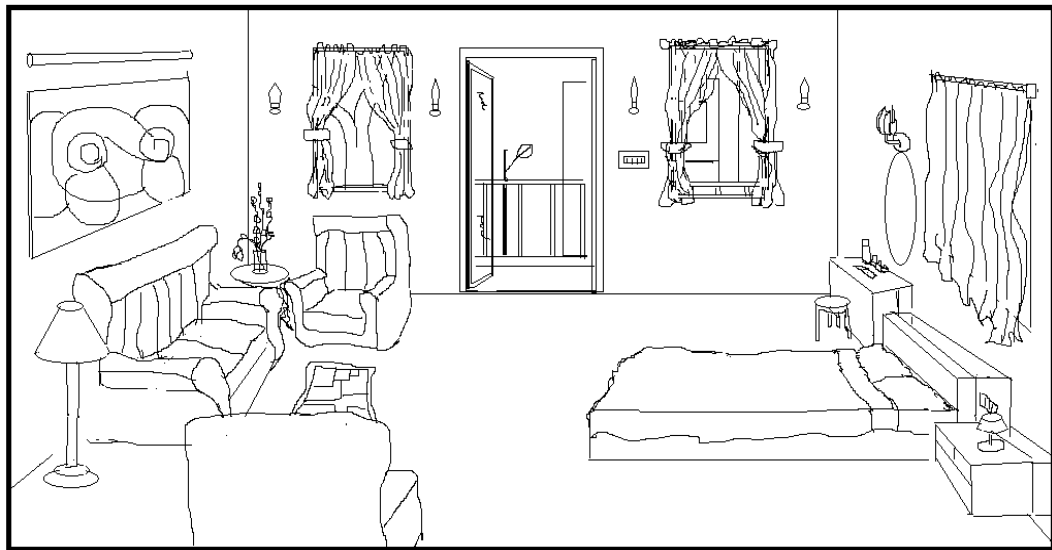
STONE

BLISS

CLOUD

4. CINEMATOGRAPHY

1. Shade the following picture according to possible light sources of your choice and indicate the time. In 10 sentences explain the possible sources of light as per your shading. (10 marks)



2. You are standing in a park or an open field on a bright clear March day. Describe the quality of light, if the time is 2marks eachX2=4

a) 7 o' clock in the morning

b) 12 noon

3. Tick the correct answer:-

1 mark each X6=6

a) The lens on most cell phone cameras is **i) a wide angle lens ii) a normal lens iii) a tele lens iv) a zoom lens**

b) Which of the following is not a display device **i) LMD ii) LCD iii) LED iv) HMI**

c) Which of the following is not a camera **i) scarlet ii) alexa iii) viper iv) clamshell**

d) The colour of a yellow lemon under a mercury vapour lamp is

i)orange ii)yellow iii)green iv) off white

e) White light is a mixture of the colours **i) red, blue and green, ii)cyan, magenta and yellow, iii) red, blue and yellow iv) none of the above**

f) A blue wall seen through a blue glass looks **i) blue ii) white iii)black iv)none of the above**

4. From any one of the following photographs identify and outline five more frames within the given frame that you could shoot. (5 marks)



1. Read the following paragraph and roughly draw five frames of possible shots and accompany it with word descriptions about the same. (5 marks)

Suddenly she saw the house, tucked away behind the trees almost in the shadow of the hill. It was a bare earth house in the traditional style; brown mud walls, a few glassless windows, with a knee-height wall around the yard. A previous owner, a long time ago, had painted designs on the wall, but neglect and the years had scaled them off and only their ghosts remained ... She opened the door and eased herself out of the van. The sun was riding high; its light prickled at her skin....

SOUND RECORDING & DESIGN

Group A

2 marks each X5=10

A. If a vibrator strikes the water 10 times in one second and then the frequency of wave is _____.

1. 10 Hz
2. 0.5 Hz
3. 5 Hz
4. 0.1 Hz

B. An ultrasonic wave is sent from a ship towards the bottom of the sea. It is found that the time interval between the sending and receiving of the wave is 1.6 s. What is the depth of the sea, if the velocity of sound in the seawater is 1400 m/s?

1. 1120 m
2. 560 m
3. 1400 m
4. 112 m

C. A sound source sends waves of 400 Hz. It produces waves of wavelength 2.5 m. The velocity of sound waves is

1. 100 m/s
2. 1000 m/s
3. 10000 m/s

4. 3000 km/s

D. An operating lamp draws a current of .4 ampere. The amount of charge passing through the lamp in 10 seconds is?

- A. .045 C
- B. 4.0 C
- C. 5.0 C
- D. 6.24 C

E. The length of second's pendulum on the surface of earth is 1 m. the length of same pendulum on the surface of moon, where acceleration due to gravity is $(1/6)^{\text{th}}$ of the g on the surface of earth is

- (a) 36 m
- (b) 1 m
- (c) $\frac{1}{36}$
- (d) $\frac{1}{6}$ m

Group B

Evaluate the integral.

3 marks each X5=15

a) $\int (e^{2x} - e^{-2x}) dx$

b) $\int e^{3\theta} / (1 + e^{3\theta}) d\theta$

c) Solve the following: $\log_2 (\log_4 (\log_5 x)) = -1$

d) Solve for x: $\log (3- x) + \log (3+ x) = \log 5$

e) Solve the following quadratic equation for 'X' and give your answer correct to three significant figures. $2X^2 - 4X - 3 = 0$

Group C

Imagine that you are sitting in your room at night. Suddenly there is a power failure. You can see absolutely nothing. Describe what you would expect to be hearing. 5