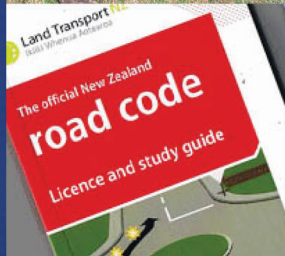


# LAND BASED TRAINING 2015

## STAR / GATEWAY PROGRAMMES for SECONDARY SCHOOLS

0508 TRAINME  
[www.landbasedtraining.co.nz](http://www.landbasedtraining.co.nz)

*Akoranga O Te Whenua  
NZQA Accredited Provider*







# LAND BASED TRAINING

## CONTENTS

	<b>PAGE</b>
Land Based Training Details	2
Proviso for Unit Standard Delivery and Assessment	3
<b>STAR &amp; GATEWAY PROGRAMMES</b>	
STAR Courses - Agriculture	4-6
Gateway Courses – Agriculture	7-10
Gateway Courses - Equine	11
<b>SHORT COURSE OPTIONS</b>	
Short Course Policies	12
Agriculture	13
Equine	14
Learner Car Licence Course	15
Customer Service and Employment Law	15-16
Health & Safety	16
<b>INTERSCHOOL COMPETITION &amp; FARM TRAINING SCHOOLS</b>	
Interschool Agricultural Competition	17-18
Land Based Training Farm Schools	19

## LAND BASED TRAINING

Land Based Training was incorporated on the 9<sup>th</sup> day of December 1996 and is registered as a private training establishment by the New Zealand Qualifications Authority (NZQA) under the provisions of the Education Act 1989 and its subsequent amendments.

Land Based Training is an innovative Tertiary Education Provider with its head office based in Wanganui and branching out with courses and facilities throughout the North Island of New Zealand.

### **Accreditation:**

Land Based Training is nationally accredited to teach New Zealand Qualifications Authority unit standards of learning in agriculture up to and including level 5 and Level 6 units in production and agribusiness management, a range of horticultural units and also units in the sub-field civil plant operation and management, civil works and services, highway construction and maintenance and occupational health and safety, customer service, road transport, & forestry.

### **Quality:**

Land Based Training is focused on quality and safety. Our QMS is based on the NZQA's guidelines and policies for registration and accreditation.

In May 2011, Land Based Training was subject to an External Evaluation and Review and gained **Highly Confident in Educational Achievement** and **Highly Confident in Self Assessment**. LBT is considered by NZQA as a Category 1 Provider.

Land Based Training was recognised with a highly commended Provider of the Year Award at the New Zealand Association of Private Education Providers (NZAPEP) in 2012.

Our Health and Safety Policy is managed by a committee, which meets regularly. Health and Safety is a key course component and staff are active in Land Based Training's health and safety programme.

### *EER Report – May 2011*

- *Over the past three years, LBT has consistently exceeded Tertiary Education Commission contract performance targets*
- *Since 2008, LBT has been progressively implementing well-structured and planned systematic self-assessment and organisational review process. Staff at all levels are actively involved and provide input to reviews. LBT's self-assessment system is well integrated into the organisation's periodic staff and management meetings, as well as into programme and organisational review processes.*
- *The organisation has demonstrated it has an excellent understanding of the needs of the communities within which it is offering training*
- *The organisations self-assessment processes identify that trainees are gaining significant growth in essential job-seeking skill areas such as timekeeping, problem-solving, interpersonal skills, conflict resolution, literacy and numeracy, as well as significant personal growth such as confidence and self-esteem*
- *The tutors employed at LBT are highly effective*
- *Teaching practice reflects a "mastery of learning" approach*
- *The two directors of LBT have a very clear focus on educational achievement*
- *LBT provides excellent physical and learning resources*
- *LBT programmes are based on a strengths-based approach, and trainees and staff discussed the help and support provided and sense of community and belonging at LBT*

## **Proviso for Unit Standard Delivery & Assessment:**

### **Accreditation and Registration of Unit Standards:**

All unit standards to be registered with NZQA by the school. Land Based Training needs to maintain moderation standards with the Primary ITO, therefore Land Based Training is to mark all assessments for consistency and continuity.

### **Numbers:**

A maximum tutor to student ratio of 1:10 for farm courses is based on health and safety requirements. Chainsaw safety courses have a maximum ratio of 1:8

### **Timing:**

Some courses are delivered in school holidays to reduce loss of school class time.

### **Credit Value:**

Please note that one credit is equal to 10 notional hours of learning. Students may be asked to verify prior knowledge and / or experience for practical unit standards before assessment will take place. Some units may require an element of self directed learning.

### **National Certificates:**

We are able to offer to Secondary Schools the opportunity for students to achieve their National Certificate in Agriculture Level 2 over a two year period either with STAR or Gateway.

Please talk to our School's Coordinator for more information to see if students are eligible.

### **Vocational Pathways:**

This year you will find we have marked the unit standards which are aligned to the Primary Industries Vocational Pathway. These unit standards are recommended by the industries across our sector.

### **Quad Bikes and Tractors:**

In accordance with the Primary ITO, short courses are spread over a minimum of 2 weeks. The split days give students opportunities to gain experience. A 'logbook' is given to each student to record practical experience – prior to the course start and between the course days.

It must be noted that some students with little or no experience other than course time may not reach competency for practical unit standards.

Land Based Training will only offer level 1 Quad Bike and Tractor practical unit standards.

### **Chainsaw Safety:**

This 3 day course is a challenging programme for inexperienced students. Some sections are 'closed book' and those students with no previous chainsaw experience may not reach competency in the practical unit standard 6917 Operate a Chainsaw level 2, minimum age 16 years.

**Costs:** Tutor travel and expenses will apply on top of the daily rate.

### **Prices:**

All prices are on application.

# STAR Agriculture Courses

## **Purpose:**

This is a popular choice with schools where a group of students are taken out of the school each week, for either a half or full day. This is an external programme where 100% of the course content is out of the school's grounds. There are some schools that have opted to have a classroom available and also allow some of the practical courses on the school grounds e.g. motorbikes.

## **Timeframe:**

There are usually 32 weeks available in the curriculum, with most schools opting for a 30 week programme. Most schools allocate only one day per week but there is a trend towards two-day programmes, particularly for the transition students. The number of teaching weeks can be adjusted to suit the school timetable; this may affect how many units are achieved depending on the timeframe allowed.

## **STAR Agriculture Courses:**

These may include 3 options: dairy, sheep or beef and their respective unit standards.

Students may take this course over two years working towards;

- Year one Introduction – Level 2
- Year two completion with certification

## **Maximum Student Numbers:**

Land Based Training recommends a maximum number of students per course is 10. This is to meet health and safety policy requirements and also fits well with van transport to practical facilities. Minimum of 8 students apply.

## **Land Based Training Responsibilities:**

1. Supply an industry based tutor
2. Deliver unit standard associated material and administer assessments
3. Plan, book all sites and resource requirements
4. Supply and support moderation policy
5. Health and Safety of students while on course

## **School Responsibilities:**

1. Supply the students as required
2. Supply all student travel arrangements. This cost may be met by the school or added onto the overall fee.
3. Register all unit standards with NZQA

### ***Student Testimonial - Kareen Stephenson, Currently studying National Certificate in Agriculture - Level 4***

*I joined Land Based Training in 2010 and Dinah opened my eyes to the mechanics of not only Dairy farming but to life. To learn, work, get confidence at each level, setting higher goals. Without her course I would not be farming. I am learning at my own pace, which would suit anybody's style of learning, it's been versatile, I have always received good advice and Dinah and Mark have been dependable. It has truly been a good experience and I would recommend anyone to join the course.*

*Thank you Dinah and Mark for making it what it is - 2014*

## Agriculture STAR Year 1 (Total 27 credits)

Unit Standard	Descriptor	Version	Level	Credit	Theory /Practical	Vocational Pathway
19044	Describe the legal requirements and occupational hazards associated with tractor use	3	2	3	T	✓
27608	Check and drive a basic wheel tractor under close supervision on flat terrain	1	1	3	P	
24557	Demonstrate knowledge of the safe operation of a Quad Bike	3	2	3	T	✓
27602	Ride a quad bike on flat terrain under close supervision	1	1	3	P	✓
19116	Demonstrate knowledge of livestock behavior and animal welfare	3	2	2	T	✓
23540	Demonstrate knowledge of hazards, hazard control and the consequences of injury in a rural workplace	1	2	5	T	✓
19145	Describe hydration, nutrition, and sleep in relation to physical well-being of agriculture workers	2	2	4	T	✓
19112	Check and report on livestock	2	2	4	P	✓

## Agriculture STAR Year 2 – Dairy Option (Total 26 credits)

Unit Standard	Descriptor	Version	Level	Credit	Theory/ Practical	Vocational Pathway
24836	Describe non-electric fences, fence support materials, and safe practices in fencing	2	2	2	T	✓
24833	Identify and maintain fencing tools and equipment, and identify fencing construction materials and wire types	1	2	3	P	✓
24835	Identify the location of a fault in electric fences, and replace electric fence components	1	2	3	P	✓
24834	Replace a broken post, and repair a broken wire in fences	1	2	5	P	✓
26417	Assist with handling cattle in yards	1	2	2	P	✓
24623	Demonstrate knowledge of breeds and classes of cattle, and identification and records for cattle	2	2	2	T	✓
18191	Demonstrate knowledge of safe handling and health problems of dairy cattle, associated with milking	3	2	3	T	✓
18193	Demonstrate knowledge of farm dairy design, and the effluent system	3	2	2	T	✓
18192	Demonstrate knowledge of how cows produce milk	3	2	2	T	✓
561	Install, dismantle, and store temporary electric fences	4	2	2	P	✓

## Agriculture STAR Year 2 - Sheep Option *(Total 28 credits)*

Unit Standard	Descriptor	Version	Level	Credit	Theory /Practical	Vocational Pathway
19106	Assist with handling livestock when moving and drafting, and when livestock are distressed	2	2	4	P	✓
24833	Identify and maintain fencing tools and equipment, and identify fencing construction materials and wire types	1	2	3	P	✓
24832	Open and draw out a coil of wire, tie knots, join wire, and prepare wire for transport and storage	1	2	5	p	✓
24834	Replace a broken post, and repair a broken wire in fences	1	2	5	P	✓
577	Dag and crutch sheep by machine with prepared equipment	5	2	5	P	✓
24641	Demonstrate knowledge of features, attributes, identification, and records for sheep	1	2	2	T	✓
19147	Describe the activities and hazards in a wool shed during shearing from a farm perspective	2	2	2	T	✓
24836	Describe non-electric fences, fence support materials, and safe practices in fencing	2	2	2	T	✓



### LAND BASED TRAINING

#### Youth Guarantee Courses

- National Certificate in Agriculture Level 2 - Dairy & Sheep/Beef
- No fees to pay
- 4 days practical, 1 day theory
- A pathway to further study and a rewarding farming career

Contact us on **0508 TRAIN ME (872 466)**

Education and Employment Specialists  
[www.landbasedtraining.co.nz](http://www.landbasedtraining.co.nz)



## Agriculture & Equine Gateway Courses

Gateway students are placed with a sponsor farmer for one day per week incorporating practical unit standards. This may involve: fencing, quad bikes, milking, tractors, stock handling, equine etc.

Some Gateway students attend class with other Land Based Training students at one of our training sites completing theory unit standards – some of these unit standards are prerequisites to the practical unit standards.

Credits from unit standards go towards the National Certificate in Agriculture (Introductory Skills) and the National Certificate in Equine Level 2. Once students have left school they can enrol with Land Based Training, complete this qualification and go on to Level 3.

Schools are responsible for:

- Designing workplace learning programmes for students
- Overseeing the learning opportunities and assessment once they are set up
- Programme Administration
- Liaise with participating employers and Industry Training Organisations

### **Gateway Process:**

Land Based Training provides Gateway Ag Students with workbooks and assessments via our on-line option.

Schools will be given access to the Gateway on-line modules through our website for a one year period.

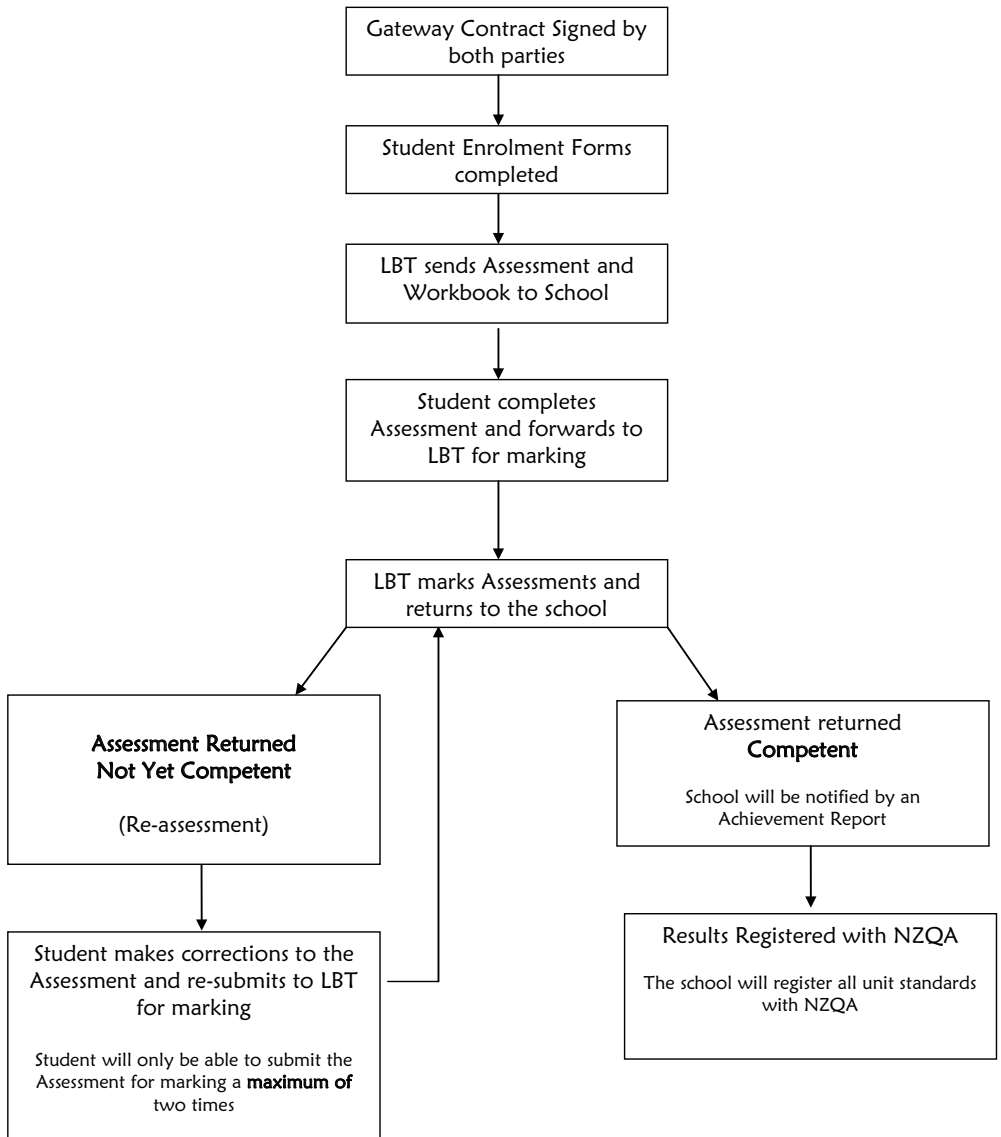
Module options for gateway students include; Sheep, Beef, Dairy, General Agriculture and Equine. These five teaching options gives the student the opportunity to choose the area of agricultural interest most relevant to them. An annual licence fee applies.

Land Based Training's responsibilities are:

- Support the student
- Mark the assessments
- Report to the school
- Visit the student at the sponsor farm and carry out the practical assessments

Land Based Training can offer classes to support theory learning if required.

# Gateway Marking Process



## Agriculture Gateway – General *(Total 33 credits)*

Unit Standard	Descriptor	Version	Level	Credit	Theory /Practical	Vocational Pathways
23541	Locate hazards, describe safety procedures, and demonstrate safe work practices in a rural workplace	1	2	5	P	✓
27608	Drive a basic wheel tractor on flat terrain under close supervision	1	1	3	P	
27602	Ride a quad bike on flat terrain under close supervision	1	1	3	P	✓
19044	Describe the legal requirements and occupational hazards associated with tractor use	3	2	3	T	✓
24557	Demonstrate knowledge of the safe operation of a quad bike	3	2	3	T	✓
19114	Assist with handling and treatment of livestock	2	2	6	P	✓
24833	Identify and maintain fencing tools and equipment, and identify fencing construction materials and wire types	1	2	3	T/P	✓
21556	Control weeds under supervision	2	2	2	P	✓
24832	Open and draw out a coil wire, tie knots, join wire, and prepare wire for transport and storage	1	2	5	P	✓

## Agriculture Gateway – Dairy *(Total 33 credits)*

Unit Standard	Descriptor	Version	Level	Credit	Theory /Practical	Vocational Pathways
23541	Locate hazards, describe safety procedures, and demonstrate safe work practices in a rural workplace	1	2	5	P	✓
24548	Assist with milking	1	2	8	P	✓
19044	Describe the legal requirements and occupational hazards associated with tractor use	3	2	3	T	✓
27608	Drive a basic wheel tractor on flat terrain under close supervision	1	1	3	P	
24557	Demonstrate knowledge of the safe operation of a quad bike	3	2	3	T	✓
27602	Ride a quad bike on flat terrain under close supervision	1	1	3	P	✓
19114	Assist with handling and treatment of livestock	2	2	6	P	✓
561	Install, dismantle, and store temporary electric fences	4	2	2	P	✓

## Agriculture Gateway – Sheep *(Total 34 credits)*

Unit Standard	Descriptor	Version	Level	Credit	Theory /Practical	Vocational Pathways
23541	Locate hazards, describe safety procedures, and demonstrate safe work practices in a rural workplace	1	2	5	P	✓
19044	Describe the legal requirements and occupational hazards associated with tractor use	3	2	3	T	✓
27608	Drive a basic wheel tractor on flat terrain under close supervision	1	1	3	P	
24557	Demonstrate knowledge of the safe operation of a quad bike	3	2	3	T	✓
27602	Ride a quad bike on flat terrain under close supervision	1	1	3	P	✓
19152	Assist with preparation and handling of lambs for docking	2	2	2	P	✓
19114	Assist with handling and treatment of livestock	2	2	6	P	✓
19112	Check and report on livestock	2	2	4	P	✓
19146	Carry out wool shed tasks during shearing operations	2	2	5	P	✓

## Agriculture Gateway – Cattle *(Total 35 credits)*

Unit Standard	Descriptor	Version	Level	Credit	Theory /Practical	Vocational Pathways
23541	Locate hazards, describe safety procedures, and demonstrate safe work practices in a rural workplace	1	2	5	P	✓
27608	Drive a basic wheel tractor on flat terrain under close supervision	1	1	3	P	
19044	Describe the legal requirements and occupational hazards associated with tractor use	3	2	3	T	✓
24557	Demonstrate knowledge of the safe operation of a quad bike	3	2	3	T	✓
27602	Ride a quad bike on flat terrain under close supervision	1	1	3	P	✓
19112	Check and report on livestock	2	2	4	P	✓
19114	Assist with handling and treatment of livestock	2	2	6	P	✓
19106	Assist with handling livestock when moving and drafting, and when livestock are distressed	2	2	4	P	✓
26417	Assist with handling cattle in yards	1	2	2	P	
561	Install, dismantle, and store temporary electric fences	4	2	2	P	✓

## Equine Gateway

Unit Standard	Descriptor	Version	Level	Credit	Theory /Practical	Vocational Pathways
1623	Prepare a horse for a show	5	2	3	P	✓
1624	Care for horses paddock and horses in a paddock	6	3	6	T/P	
1648	Clean stables	5	2	2	T/P	✓
1650	Prepare a horse for travel by road and load and unload	5	2	4	T/P	✓
1656	Groom a horse	5	2	2	T/P	✓
6579	Clean and maintain saddlery for horses	4	2	2	T/P	
6612	Identify plants, grasses and trees which are potentially poisonous to horses and describe methods of removal	5	3	3	T/P	
6617	Assess stable design and construction	5	3	3	T/P	
6622	Analyse horse feed and stable horses	5	3	4	T/P	



*PLUS you get...*

- ✓ Login access for one year
- ✓ Access to all units for a great price
- ✓ Excellent resources

**Student Testimonial** - *Bridget Duncan, Currently studying National Certificate in Agriculture Level 4*

*I started with Dinah at Land Based Training when I left school, it has opened up gateways to career opportunities in the Dairy Industry which I would not have got anywhere else. Dinah individually tailored the course to suit my style of learning which has given me so much confidence to grow personally and the support she and Mark have given me and the insights that they have shown keep me going onwards and upwards. I am in charge of my life and know where I want to be. I can set my own targets towards management or 50/50 sharemilking. I have had a really good experience and would like to recommend the course to everyone. Thank you Dinah and Mark - 2014*

## Short Course Policies

Land Based Training offers a number of exciting short courses. We have listed in this booklet our most popular courses; please contact us if you would like to see other options as we can tailor courses to meet your student needs.

Land Based Training also offer a number of agriculture taster courses which are popular with Year 10 and Year 11 students in the fourth term. This is a great way for students to get interested in agriculture and then join a STAR class in Year 12 & 13.

### **Land Based Training Responsibilities:**

1. Supply an industry based tutor
2. Deliver to unit standard competency
3. Plan and book all sites, stock and tool requirements

### **School Responsibilities:**

1. Ensure the minimum number of students attend. *(joint school ventures are acceptable)*
2. Provide all student travel arrangements to and from practical venues
3. Register all unit standards with NZQA

### **Minimum Numbers:**

Short courses are based on a minimum of 8 students.

### **Short Course Cancellation Policy:**

If the course is cancelled less than 72 hours before the designated day, you will still be invoiced 50% of the agreed contract price.

#### ***Student Testimonial - Bryn Williams, Currently studying Land Based Training Certificate in Agriculture Level 3***

*I didn't do well at school. I wasn't interested and got distracted easily. I fell into a job doing what I thought I wanted to do. I did well and listened to people who said they were going into further education to change their professions, but I didn't think I could learn again. I talked to a friend who was on the Land Based Training course in Cambridge and my interest grew and I wanted to learn more, get a qualification and change my life direction. The flexibility I was provided with made it all possible. In class it was nothing like I expected, it wasn't about pass or fail, and it was supportive with lots of discussion and finding the answers through learning in so many different ways, which has allowed me to get a realistic footing into the farming industry.*

*Thank you Land Based Training Waikato - 2014*

# Agriculture Short Courses

## Course One - Fencing – 2 days

Unit Standard	Descriptor	Level	Credits	Theory/ Practical	Vocational Pathway
24836	Describe non-electric fences, fence support materials, and safe practices in fencing	2	2	T	✓
561	Install, dismantle, and store temporary electric fences	2	2	P	✓

## Course Two - Tractor Safety – 3 days

Unit Standard	Descriptor	Level	Credits	Theory/ Practical	Vocational Pathway
19044	Describe the legal requirements and occupational hazards associated with tractor use	2	3	T	✓
27608	Check and drive a basic wheel tractor on flat terrain under close supervision	1	3	P	✓

## Course Three – Quad Bike Safety – 3 days

Unit Standard	Descriptor	Level	Credits	Theory/ Practical	Vocational Pathway
24557	Demonstrate knowledge of the safe operation of a quad bike	2	3	T	✓
27602	Ride a quad bike on flat terrain under close supervision	1	3	P	✓

## Course Four - Chainsaw Safety – 3 days

Unit Standard	Descriptor	Level	Credits	Theory/ Practical	Vocational Pathway
6916	Demonstrate knowledge of the Approved Code of Practice relating to chainsaw use	2	5	T	
6917	Operate a chainsaw	2	8	P	

## Course Five - Health and Safety on Farm – 2 days

Unit Standard	Descriptor	Level	Credits	Theory/ Practical	Vocational Pathway
23540	Demonstrate knowledge of hazards, hazard control, and the consequences of injury in a rural workplace	2	5	T	✓

## Course Six - Farm Life Skills – 2 days

Unit Standard	Descriptor	Level	Credits	Theory/ Practical	Vocational Pathway
19137	Describe the opportunities, advantages, and disadvantages of rural employment	1	2	T	✓
19145	Describe hydration, nutrition, and sleep in relation to physical well-being of agriculture workers	2	4	T	✓

## Course Seven - Livestock Handling – 3 days

Unit Standard	Descriptor	Level	Credits	Theory/ Practical	Vocational Pathway
19106	Assist with handling livestock when moving and drafting, and when livestock are distressed	2	4	P	✓
19116	Demonstrate knowledge of livestock behaviour and animal welfare	2	2	T	✓

## Equine Short Courses

Equine Health		Level	Credit	Vocational Pathway
19949	Identify basic components and functions, and common problems of horses' body systems	2	3	
14594	Demonstrate knowledge of horse anatomy, and identify signs of good health and ill health in horses	2	3	
Equine Anatomy & Identification		Level	Credit	Vocational Pathway
25003	Identify horses anatomy and conformation	3	4	
1636	Receive and dispatch horses	2	2	
Equine Health - Advanced		Level	Credit	Vocational Pathway
1651	Recognise signs of good health, ill health, common ailments, and lameness in horses	3	8	
6580	Recognise and describe an emergency situation	3	4	

### Course Objective:

To enhance the student's knowledge in the equine industry and to assist those who wish to start out

### Pre-entry:

Access to a horse (or call LBT to discuss options)

### Course Numbers:

Maximum 10 students

### Duration:

2 days



## Learner Car Licence Course

### Course Objective:

Students credited with this unit standard are able to describe the legal responsibilities of a driver, and legal requirements for driving on the road in relation to other road users.

### Pre-entry:

Minimum 16 years of age

### Course Numbers:

Minimum 8 students

### NZQA Unit Standards:

Unit Standard	Descriptor	Level	Credits	Theory/ Practical	Vocational Pathway
3462	Demonstrate knowledge of traffic law for the purpose of safe driving	2	3	T	✓

Each student will receive:

- Road Code
- L Plates

*Please note: Students will need to pay the New Zealand Transport Agency Licence fee of \$96.10*

### Timings:

Option to do over 3x 2 hour classroom theory training or in one day

## Customer Service

This 2 day course is designed to develop customer service, and presentation skills in the work place. The course includes Unit Standards 56, 57, and 62.

Students who are entering retail or any service industry for work placement will benefit from the course.

- 10-12 students
- 2 day course

Unit Standard	Descriptor	Level	Credits	Theory/ Practical	Vocational Pathway
56	Attend to customer enquiries face-to-face and on the telephone	1	2	P	✓
57	Provide customer service in given situations	2	2	P	✓
62	Maintain personal presentation in the workplace	2	3	P	✓

# Employment Law

Senior students will benefit from having a clear understanding of Employment Law as they prepare for employment, and gain a better understanding of individual, fixed term, collective agreements and what their rights and responsibilities are.

- 10-15 students
- 1 Day Course

Unit Standard	Descriptor	Level	Credits	Theory/ Practical
1979	Describe an employment relationship, and the application of employment law to that relationship	2	3	T

# Health and Safety

## Unit Standard 497

All students before they enter the workplace under Gateway require Unit Standard 497. Land Based Training can offer students this course as a one day intensive course delivered on site at your school.

- 10-15 students
- 1 Day course

Unit Standard	Descriptor	Level	Credits	Theory/ Practical	Vocational Pathway
497	Demonstrate knowledge of workplace health and safety requirements	1	3	T	✓

## Unit Standard 17593

Unit Standard 17593 gives practical application to workplace safety. Students gain knowledge on hazard identification, followed by a practical assessment including reporting to school senior management.

- 10-15 students
- 1 Day course

Unit Standard	Descriptor	Level	Credits	Theory/ Practical	Vocational Pathway
17593	Apply safe work practices in the workplace	2	4	T/P	✓

# Interschool Agriculture Competition

Land Based Training offers all schools the opportunity to compete in our Interschool Agricultural Competition.

This is an annual event held at regional level with the three top schools from each region competing in the national competition.

## **Regional Competitions:**

Held in June / July schools will be invited to participate in these events.

The finals are held late in September at Otiwhiti Station the home of Otiwhiti Station Land Based Training Agricultural School, near Hunterville. Great prizes are supplied by our sponsors.

Teams consist of five students competing in a number of events including Quad Bike Safety, General Knowledge, Fencing, Stock Handling and a few new events each year to keep our future farmers on their toes.

This is an excellent event to let the students show off the skills they have been taught on the STAR and Gateway agricultural programmes.

## **Costs:**

The only costs involved are travel and accommodation as required for the finals.

Land Based Training supplies lunch, drinks and all farming equipment. Schools provide transport and accommodation. Accommodation can be arranged through Land Based Training.

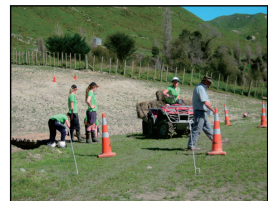
## **Feedback:**

*"Danette could you please pass on our sincere thanks to the organisers of the Ag skills comp. My lads had a great time, learned heaps and really appreciated this opportunity. I really enjoyed the luxury of being able to watch them work together as a team to solve problems, enjoy success and pick up valuable information and skills that we were lacking in. All in all a very successful event, even for me the opportunity to observe them in a variety of situations enables me to have a much more realistic picture of who and what they are. I was immensely proud of their effort, and general demeanour, they took exceptional care of me while we were away. Thanks for everything".*

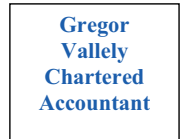
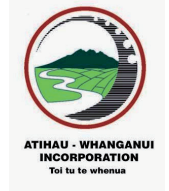
*"We enjoyed the day very much thank you. It was a great way to challenge our agricultural knowledge and skills against other like minded students.*

*The prize packs were great thanks. The Young Country subscription is a great prize for young people interested in Ag. It was good to see a number of sponsors on board this year; I am spending the Farmlands voucher this afternoon.*

*Once again thank you to Land Based Training for both the regional and final days, and the effort you guys put in."*



# Thank you to our Interschool Competition Sponsors .....



# Land Based Training Farm Schools

## Otiwhiti Station:

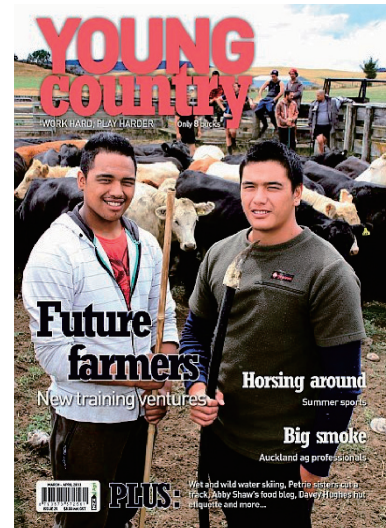
Otiwhiti Station is a historic and iconic large scale sheep and cattle breeding property located in the Hunterville district, Rangitikei.



The Agricultural School is in its eighth year and has gained a reputation for educating and training students both in theory and practical. Cadets have proven to be well skilled, employable and valuable shepherds in the Hunterville region and surrounding hill country. Testimony to their value is the willingness of the farming community to compete for employment of these students. The total area of Otiwhiti Station is 3350 hectares and has now been purchased by two parts of the Duncan Family. The station buildings include the homestead, manager's residence, shepherds residence, cookhouse and single shepherds' quarters.

Land Based Training and The Duncan Land Company are privileged to offer this opportunity to potential students.

Developing skills and knowledge and being recognised for that through a qualification is an important part of life today. Being involved in the sheep and beef industry is a positive step in student's career pathway. Cadets will gain the LBT Certificate in Agriculture Level 3.



## Te Rua O Te Moko Farm School:

This exciting course is designed to give you an opportunity to enhance your skills and knowledge to start a successful dairy career.

Te Rua O Te Moko Ltd is a dairy enterprise located near Normanby in the Taranaki Region. The dairy platform is comprised of the amalgamation of five separate blocks with a total farmable area of 180 hectares. The entity is currently farmed under a 50:50 sharemilker agreement and milks around 500 cows, producing 180,000 milk solids.

## Awhiwhenua Farm School:

Atihau Whanganui Incorporation and Te Ati Hau Trust have made a commitment to support Land Based Training in delivering a level three NZQA accredited course. The practical training properties and theory base for this course is to be held in Karioi at Ngā Mōkai Marae 20km southeast of Ohakune SH4 between Ohakune and Waiouru.

The properties involved with the course have different individual challenges. Having three properties will support the student to identify a standard up held in the Agricultural sector.

The AWHIWHENUA Land Based Training Course has access to the Karioi property of Ngā Mōkai Marae, and facilities to enhance and teach hill country sheep and cattle skills to a select group of not more than eight (8) trainees per year. Land Based Training offers the educational backup and teaching to ensure quality tuition is passed on to the fortunate selected students.

**Entry criteria and course fees apply to all the LBT Farm Training Schools**

**Year 13 school leavers are encouraged to apply - View all courses on our website – [www.landbasedtraining.co.nz](http://www.landbasedtraining.co.nz)**

# Attention Careers Advisors

**Have a group of senior students who have a farming background  
but not taking Agriculture in school?**

Invite them to put a team together and enter our Interschool Agriculture Competition

**Wondering what to do with YR 9 & Yr 10's in the last week of school?**

Why not try some 'Taster Days' with our trained staff to experience farm life? We can tailor a programme to suit your needs from 1-3 day courses covering general farm skills from fencing, livestock handling and quad bike's.

**Check out our website [www.landbasedtraining.co.nz](http://www.landbasedtraining.co.nz)**

This will give you more information on what we have to offer

Not see what you need? Then phone us and see if we can help

## **Farm School Visits**

There is more to our farm training schools than meets the eye. If you wish to bring a group of students to our training schools prior to the open days, please contact our office to arrange a date

0508 TRAINME (872 466)





**0508 TRAINME**  
**[www.landbasedtraining.co.nz](http://www.landbasedtraining.co.nz)**

---

*Akoranga O Te Whenua  
NZQA Accredited Provider*